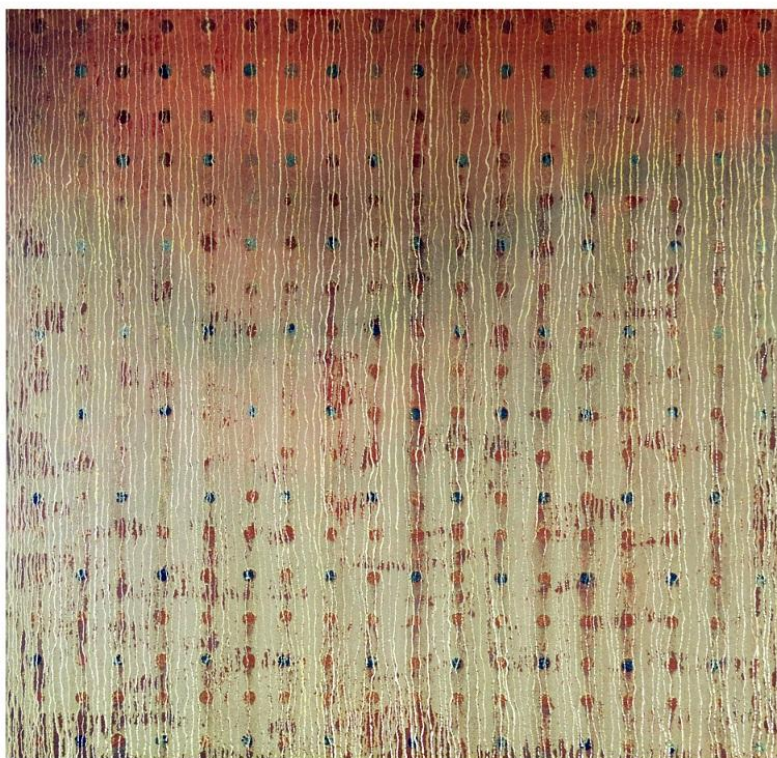


**City of Joondalup Art Collection:**  
**Invitation Art Prize Winners**  
**1998 - 2022**



**1998**  
**Trevor Richards**  
*Field Map 1, 1998*  
Oil, acrylic, sand on board. 156 x 162 cm



**1999**  
**Jon Tarry**  
*Liminal Spaces, 1999*  
Plywood, gesso and acrylic. 90 x 235 x 30 cm



**2000**

**Richie Kuhnaupt**

*Woman in Red, 2000*

Resin, steel, polyurethane, enamel paint. 200 x 200 x 200 cm



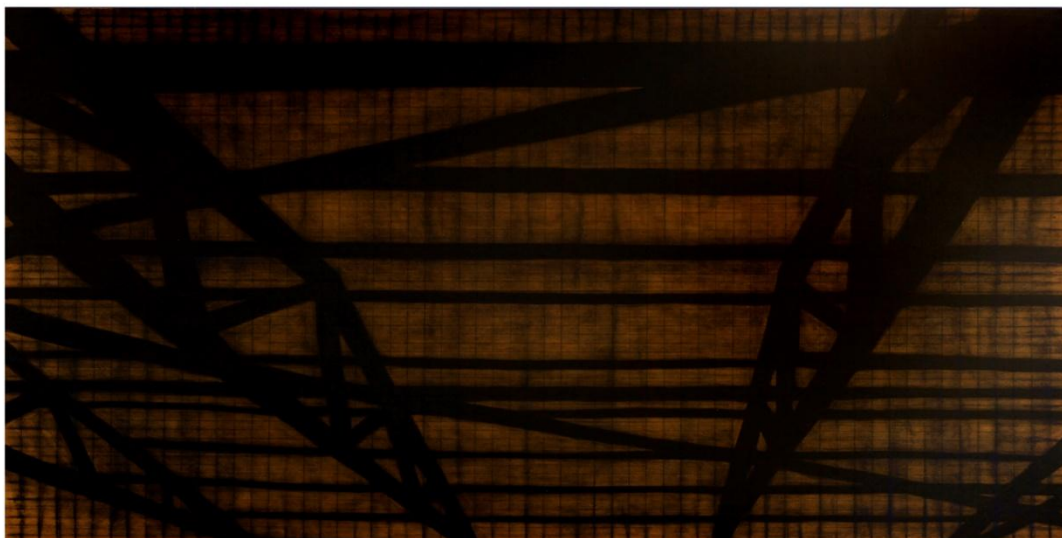
**2001**

**Rodney Glick and Lynette Voevodin**

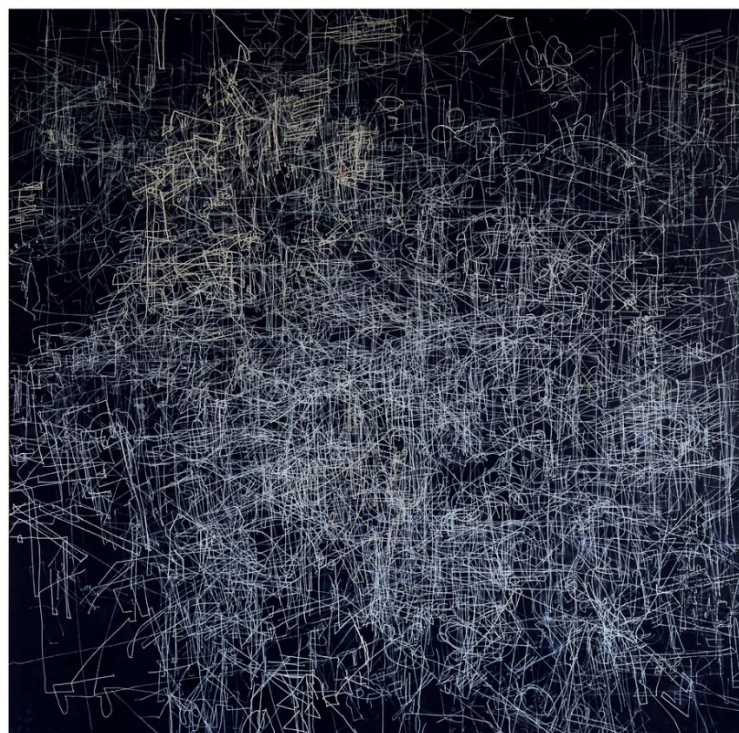
*Garages and Numbers, 2001*

Digital print on vinyl and MDF. 150 x 300 cm





**2002**  
**Bevan Honey**  
*Parallels*, 2002  
 Charcoal pigment on MDF. 122 x 244 cm



**2003**  
**Gosia Wlodarczak**  
*Night Continuous*, 2003  
 Pigment, ink, acrylic, stencil on linen. 150 x 150 cm

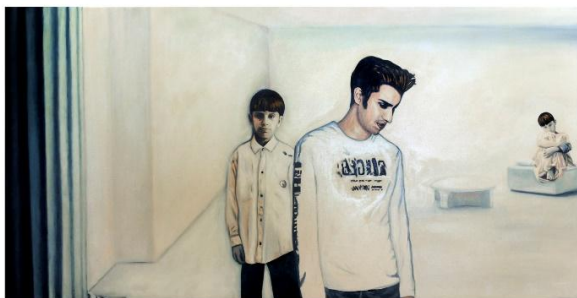


**2004**

**Paul Hinchliffe**

*A Separate Fiction*, 2004

Acrylic paint, wood, canvas construction. 74 x 184 cm



**2005**

**Connie Petrillo**

*Portrait of a Boy, I and II* (diptych), 2005

Oil on canvas. 102 x 188cm (each)



**2006**

**Meeyakba Shane Pickett**

*The Arriving of Mugaroo's Rainclouds, 2006*

Acrylic on canvas. 122 x 101 cm



**2007**

**Nicole Andrijevic**

*Journey from the Stars, 2007*

Photographic print on paper, framed. 94 x 133 cm





**2008**

**Erin Coates**

*Microeconomics (Paradise Spent)*, 2008

Digital print on archival paper, framed. 87 x 80 x 10 cm



**2009**

**Brendan Van Hek**

*Yellow Composition*, 2009

Neon tube, steel and transformer. 130 x 50 x 25 cm



**2010**

**Graeme Burge**

*Totem for a herd with a branded hide, swearing at the sun, 2010*

Discarded auto parts, kiln cast glass, neon and electrical cable. 170 x 100 x 50 cm

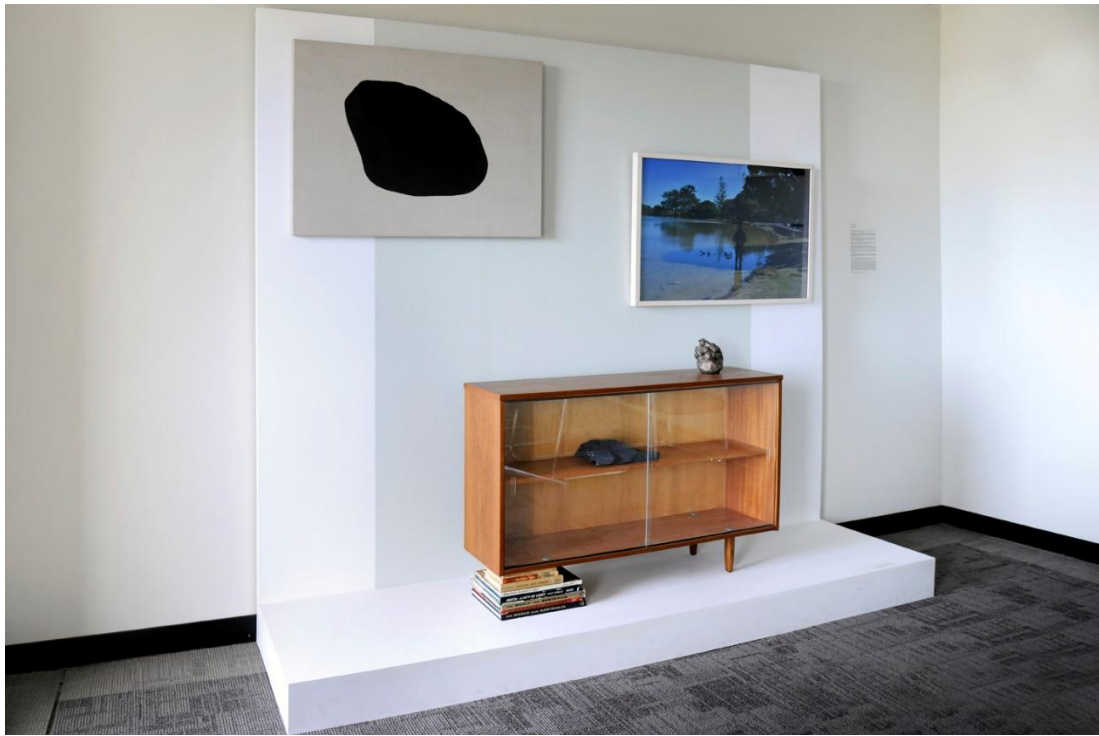


**2011**

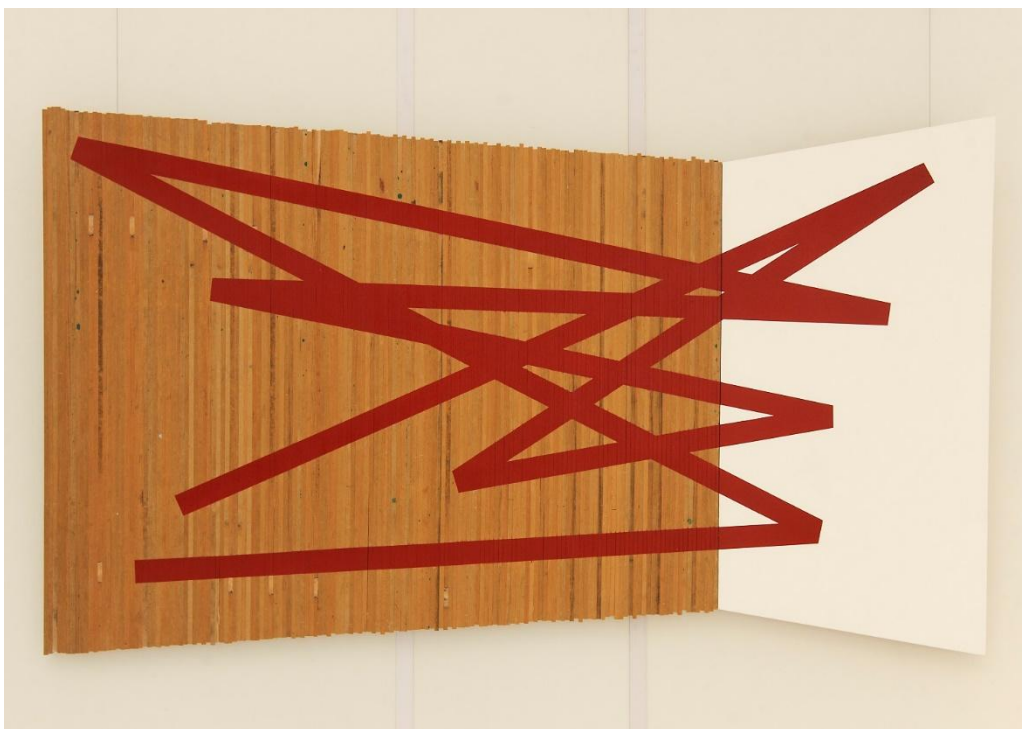
**Susanna Castleden**

*Guide to the Other Side of the World, I and II (diptych), 2011*

Cut and pasted maps on rag paper. 100cm x 150cm x 5 cm each.



**2012**  
**Kate McMillan**  
*Internal Histories, 2012*  
 Installation. Dimensions variable.



**2013**  
**Mark Parfitt**  
*Return Game, 2013*  
 Ramon, MDF, acrylic. 180 x 45 x 5 cm





**2014**

**Teelah George**

*Everything and nothing that is near peripheral*, 2014

Aluminium foil, framed. 205 x 124 cm



**2015**

**Trevor Bly and Patrick Doherty**

*It's not a party without the devil*, 2015

Silk screen and mixed media. 83 x 123 cm



**2016**

**Lee Harrop**

*Laying in State, 2016*

Core samples, core sample tray, custom made plinth. 120 x 5 x 45 cm



**2017**

**Jarrad Martyn**

*Territory, 2017*

Oil on linen. 122 x 244 cm



**2018**

**Susan Roux**

*Wives*, 2018

Paper on Canson paper, thread, ink, polyester fill, encaustic wax, conte dust, fabric.



**2019**

**Paul Kaptein**

*Mute Figure #10 (Self-Timer Selfies at The Great Attractor)*, 2019

Hand-carved wood, graphite, ink. 80 x 41 x 28 cm.





**2020**

**Elham Eshraghian-Haakansson**

*face to face, 2020*

Single-channel video, sound. 7:11 minutes duration



**2021**

**Mandy White (White, Amanda)**

***Creatures of the Crystal Caves***

Acrylic, glitter and Swarovski crystals on canvas

76.5 x 7.65cm each (four panels)



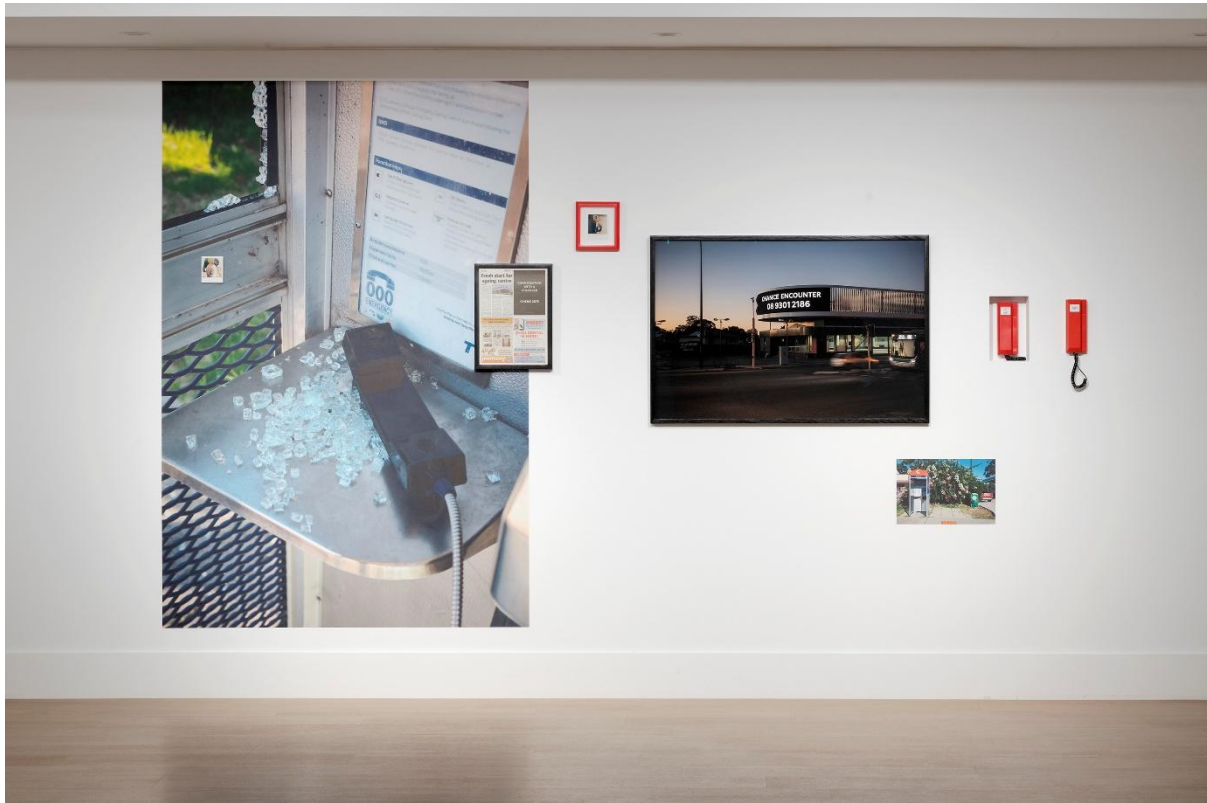
2022

Emma Buswell

***The sometimes luxury handbag and other suburban fables***

Hand woven glass beads, embroidery, 20.5 x 24 x 15cm

Natural pigment and polymer on paper, framed: 45.5 x 33cm



2025

Sam Bloor

*Chance Encounter*

Phototext wall vinyl, polaroids with custom framing, newspaper, photo on archival rag, and Ampac evacuation system phone  
Dimensions variable