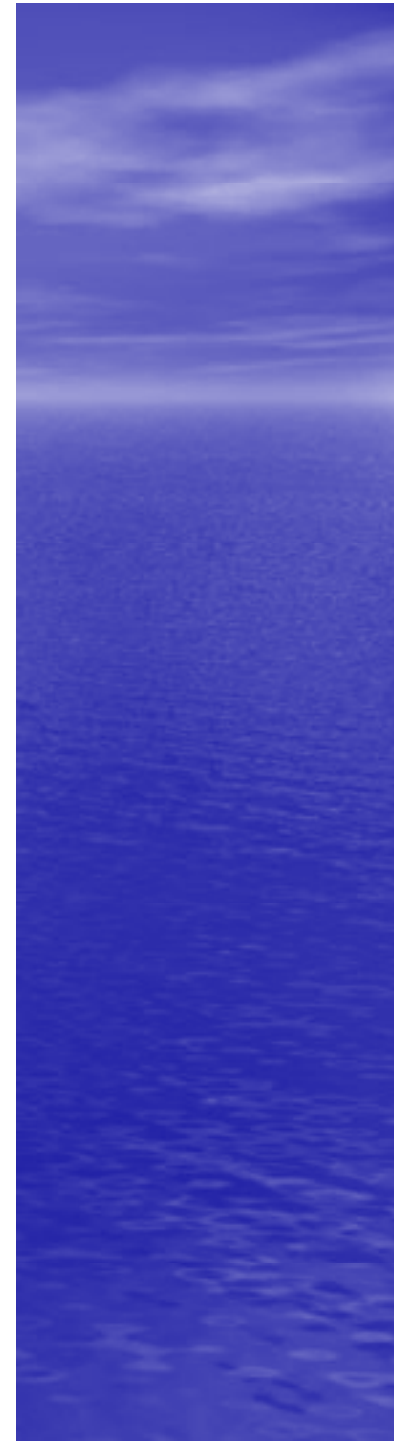
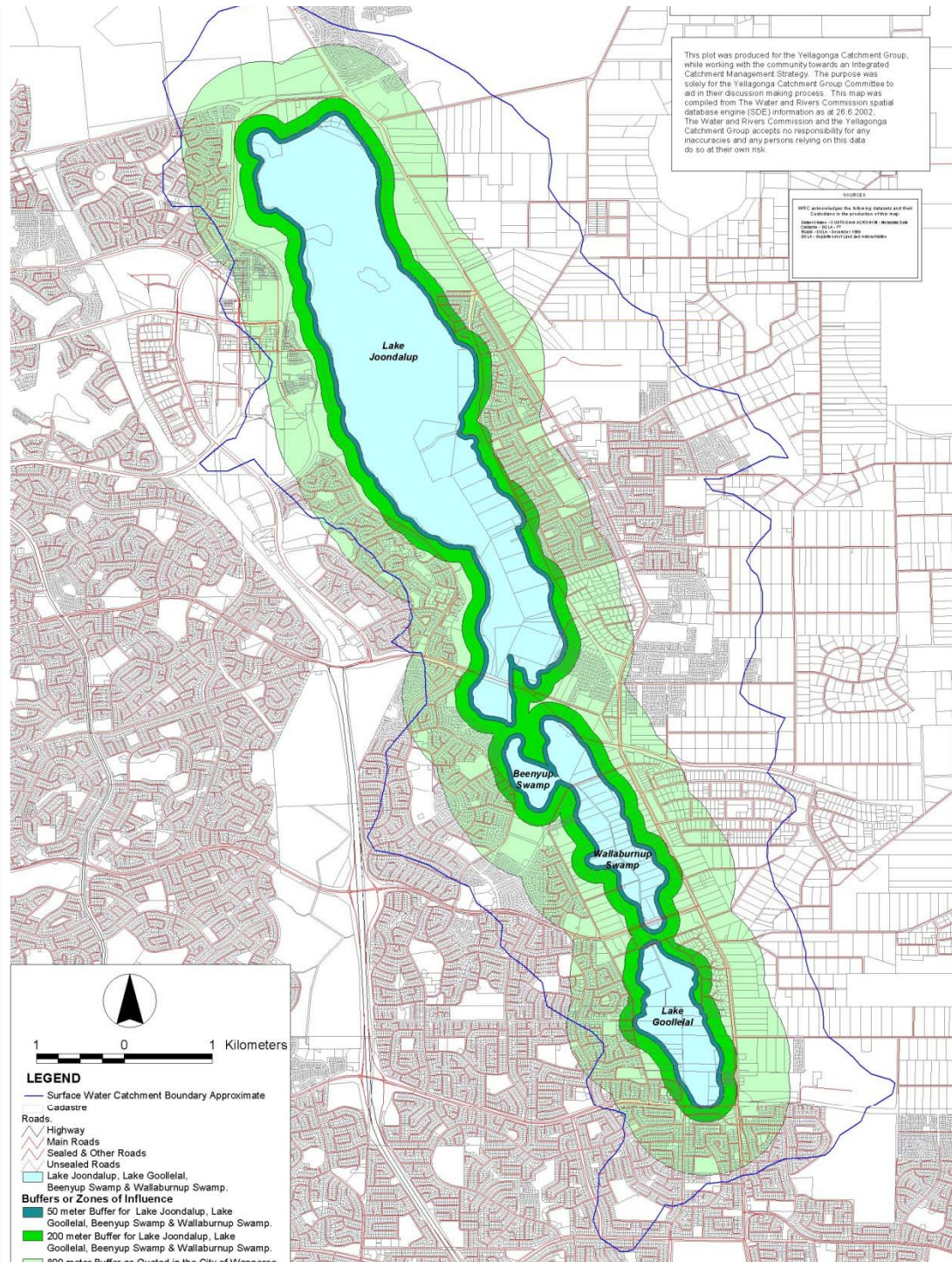


A scenic view of a lake with reeds in the foreground and a forest in the background under a blue sky. The water is dark blue with gentle ripples. The reeds are tall and thin, some green and some brown. The forest in the background is dense and green. The sky is a clear, bright blue with a few wispy clouds.

FRIENDS OF YELLAGONGA REGIONAL PARK

JOHN CHESTER











© lanmontgomerybirdway.com.au





www.birdway.com.au











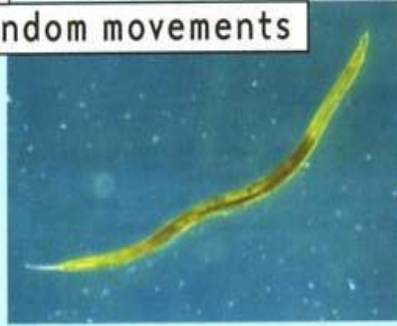




round worms

Size: up to 12 mm

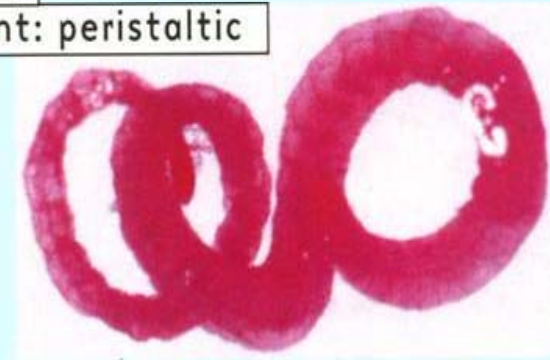
→ Movement: random movements



segmented worms

Size: 1 - 300 mm

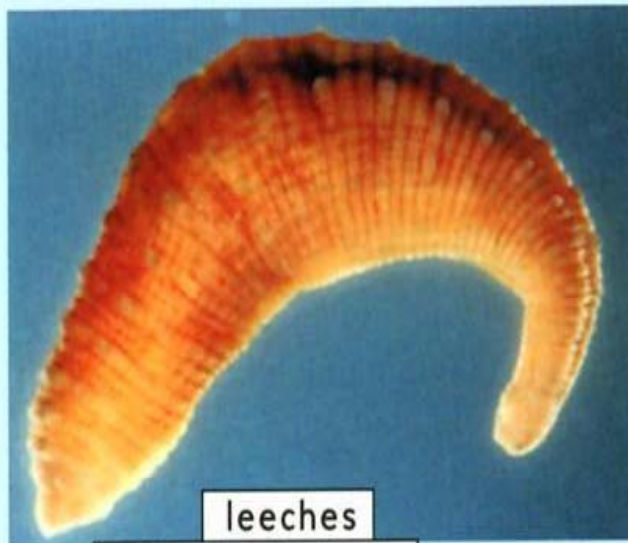
→ Movement: peristaltic



biting midge larvae

Size: up to 12 mm

→ Movement: sprawls, burrows



leeches

Size: 5 - 100 mm

→ Movement: crawls, sucks



non-biting midge larvae

Size: up to 30 mm

→ Movement: burrows



flatworms

Size: up to 15 mm

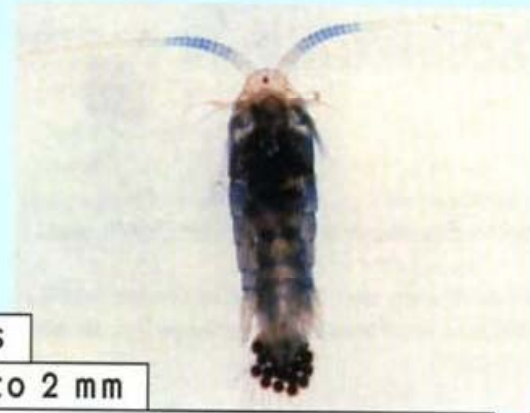
→ Movement: glides



springtails

Size: up to 3 mm

→ Movement: floats, springs



copepods

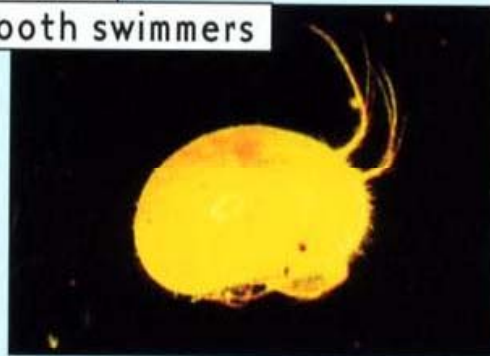
Size: up to 2 mm

→ Movement: jerky movements, stop-start action

ostracods

Size: 0.4 - 0.8 mm

→ Movement: smooth swimmers



water fleas

Size: most < 1 mm

→ Movement: jerky movements



isopods

Size: 2 - 12 mm

Movement: crawls



fairy shrimps

Size: up to 50 mm

Movement: swims upside-down

shield or tadpole shrimps

Size: up to 30 mm

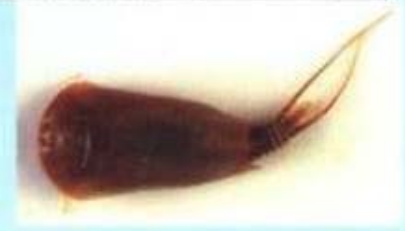
Movement: crawls or burrows



amphipods

Size: up to 10 mm

Movement: side-swimmers



freshwater shrimps

Size: up to 50 mm

Movement: swims, jumps, flicks



Gilgie

Size: up to 200 mm

Movement: crawls, backward flick with speed















The City of Joondalup Green Frog Stencilling project is based upon a similar project "The Clean Drain Wetland Gains stencilling program" developed by Sercul.

Please contact the School Liason Officer on 9400 4207 or judith.jacobs@joondalup.wa.gov.au for more information.



green frog stencilling project



T: 08 9400 4000
F: 08 9300 1383


Boas Avenue Joondalup WA 6027
PO Box 21 Joondalup WA 6019
www.joondalup.wa.gov.au

Great community service project









GREEN FROGS ARE APPEARING IN YOUR STREET TODAY
TO LET YOU KNOW THAT YOUR STREET DRAIN IS CONNECTED
DIRECTLY TO THE YELLAGONGA WETLANDS

SO PLEASE - NO OIL, DETERGENTS OR CLEANING PRODUCTS,
FERTILISER, LEAF LITTER, LAWN CLIPPINGS
OR DOGGY POO - DOWN THE DRAIN.

WITH A LITTLE CARE WE CAN KEEP OUR
WETLAND HEALTHY FOR FUTURE GENERATIONS





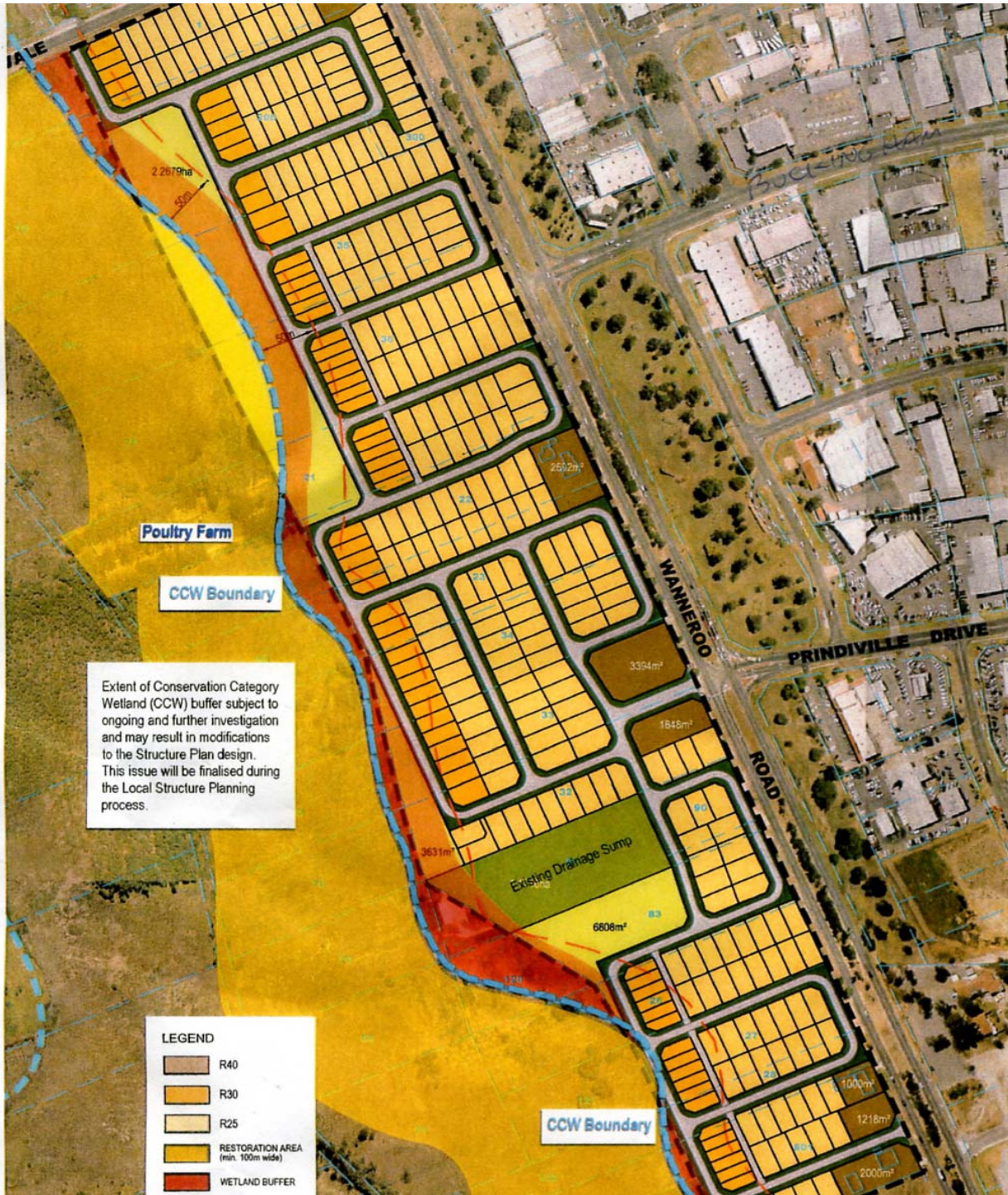






















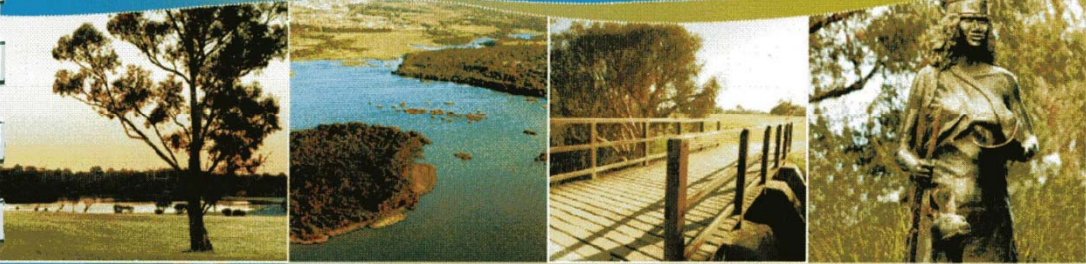






Part 1
Draft Technical Report

Yellagonga Integrated Catchment
Management Plan 2009 – 2014



2009 - 2014

- Friends of Yellagonga Regional Park (Inc)
- c/- Landsdale Farm School
- 80 Landsdale Road, Landsdale 6065

- Telephone: 9302-4677 (pls leave msg)
- Email: friendsofyellagonga@bigpond.com
- www.yellagonga.org