

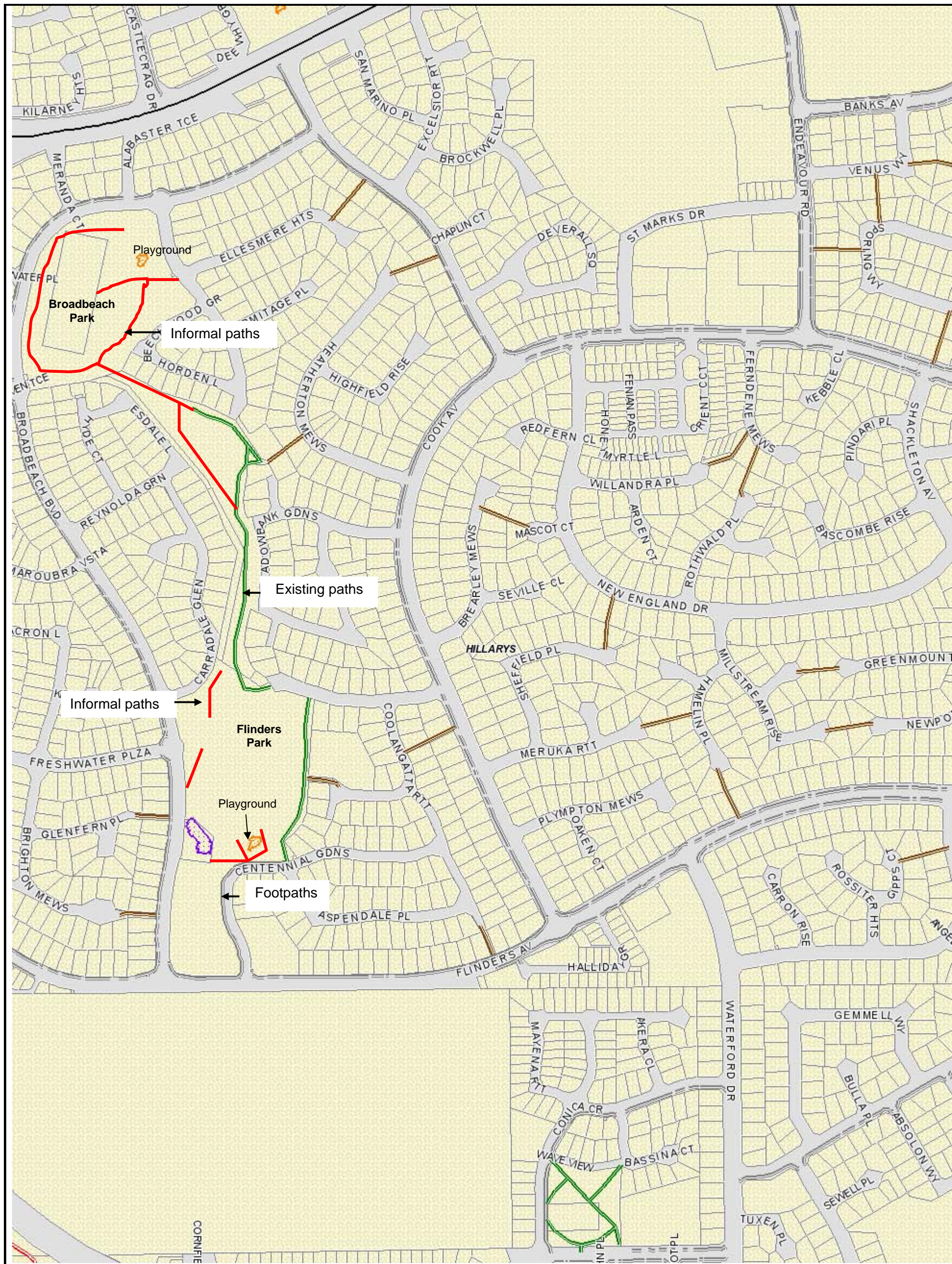


Digital Mapping Solutions does not warrant the accuracy of information in this publication and any person using or relying upon such information does so on the basis that DMS shall bear no responsibility or liability whatsoever for any errors, faults, defects or omissions in the information.

Map of Broadbeach and Flinders Parks

1:7500







90 Boas Ave, Joondalup WA 6027
 PO Box 21, Joondalup WA 6919
 Ph: 08 9400 4000
 Fax: 08 9300 1383
 info@joondalup.wa.gov.au
 www.joondalup.wa.gov.au



Scale(A4):1:2500

Date: 23 January 2013

DISCLAIMER: While every care is taken to ensure the accuracy of this data, the City of Joondalup makes no representations or warranties about its accuracy, completeness or suitability for any particular purpose and disclaims all liability for all expenses, losses, damages and costs which you might incur as a result of the data being inaccurate or incomplete in any way and for any reason.

Broadbeach and Flinders Park Proposed Paths

RESULTS OF WATER ANALYSIS - LAKES IN BROADBEACH / FLINDERS PARKS

Sampling and analysis was undertaken to determine the following:

- Appearance
- Odour
- Temperature
- Dissolved Oxygen
- Acidity/alkalinity
- Salinity
- Dissolved and Total Iron
- Nitrate
- Total Oxidised Nitrogen
- Ammonia
- Total Nitrogen
- Total Phosphorus

The analysis was performed in accordance with the American Public Health Association (APHA) Standard Test Methods for the Examination of Water and Wastewater. The results of the analysis undertaken in October 2012 which are noteworthy are:

- The water was reasonably clear, except for the middle lake which appeared slightly murky
- There was a substantial amount of aquatic flora observed and algal populations were present at the middle lake
- The lakes had low levels of dissolved oxygen, high levels of ammonia and they were also of slight to moderate alkalinity on the pH scale.

Slight to moderate alkalinity would explain the levels of ammonia, limiting the amount of nitrogen entering the lake system would help to balance this out over time.

The very low levels of dissolved oxygen in the middle lake is mostly due to oxygen being lost to processes occurring in the sediments and consumption by algae.