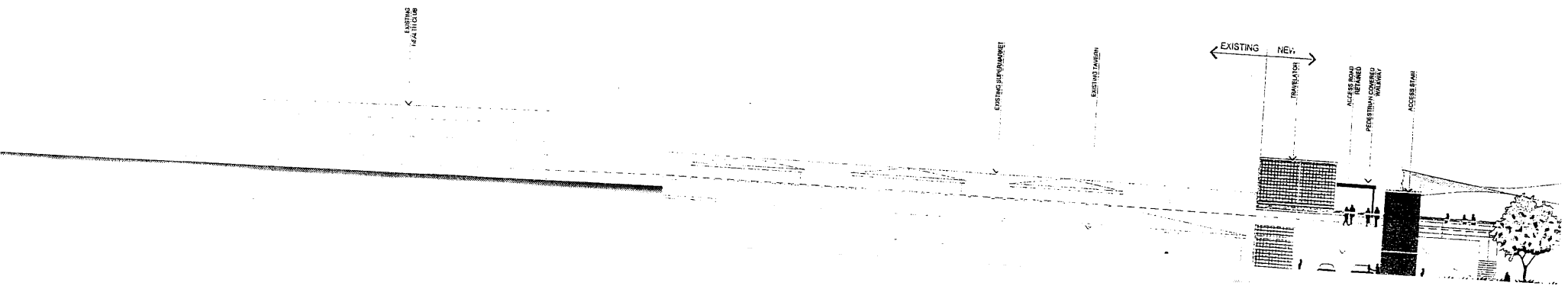


North/East Elevation

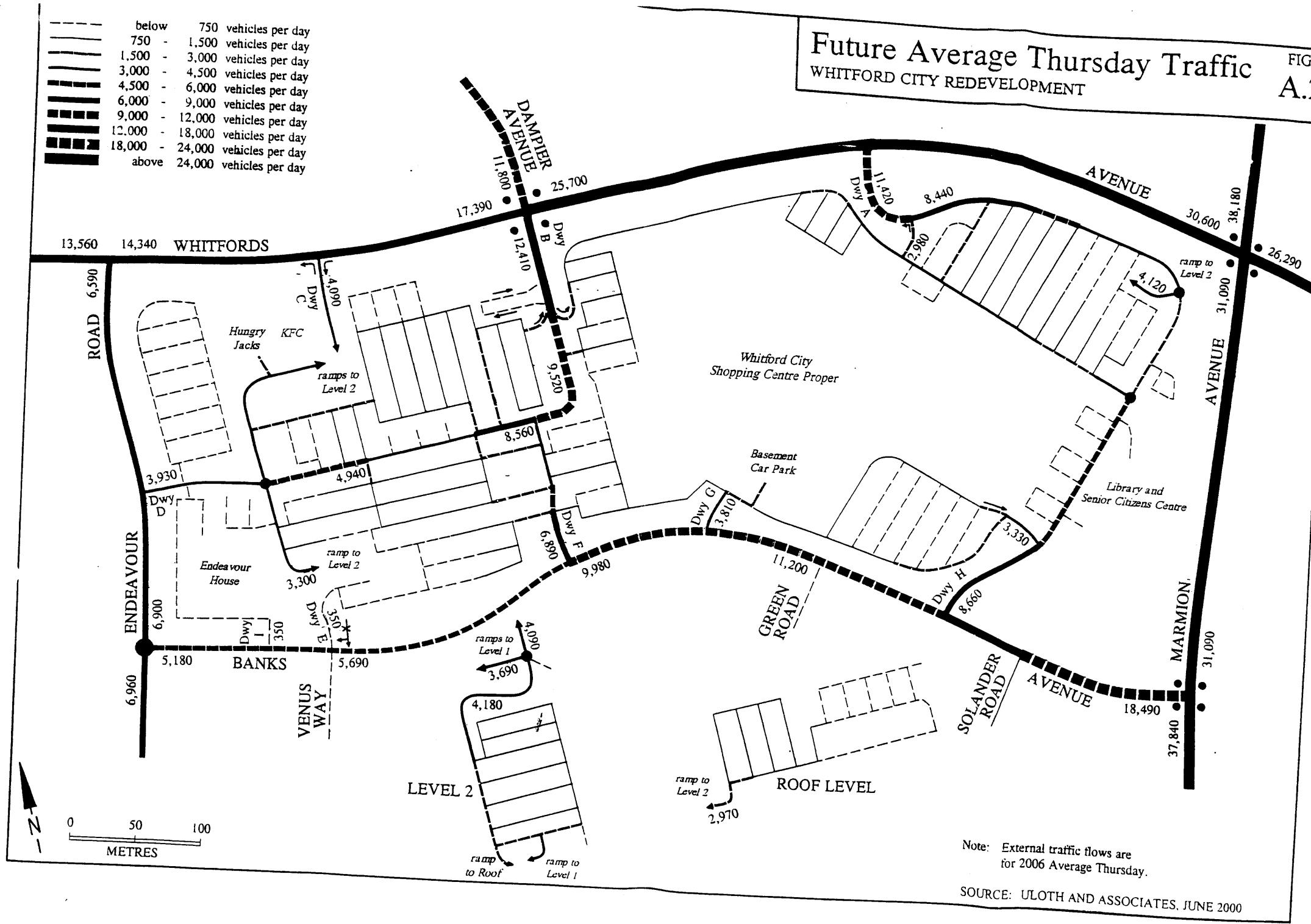


# Future Average Thursday Traffic

## WHITFORD CITY REDEVELOPMENT

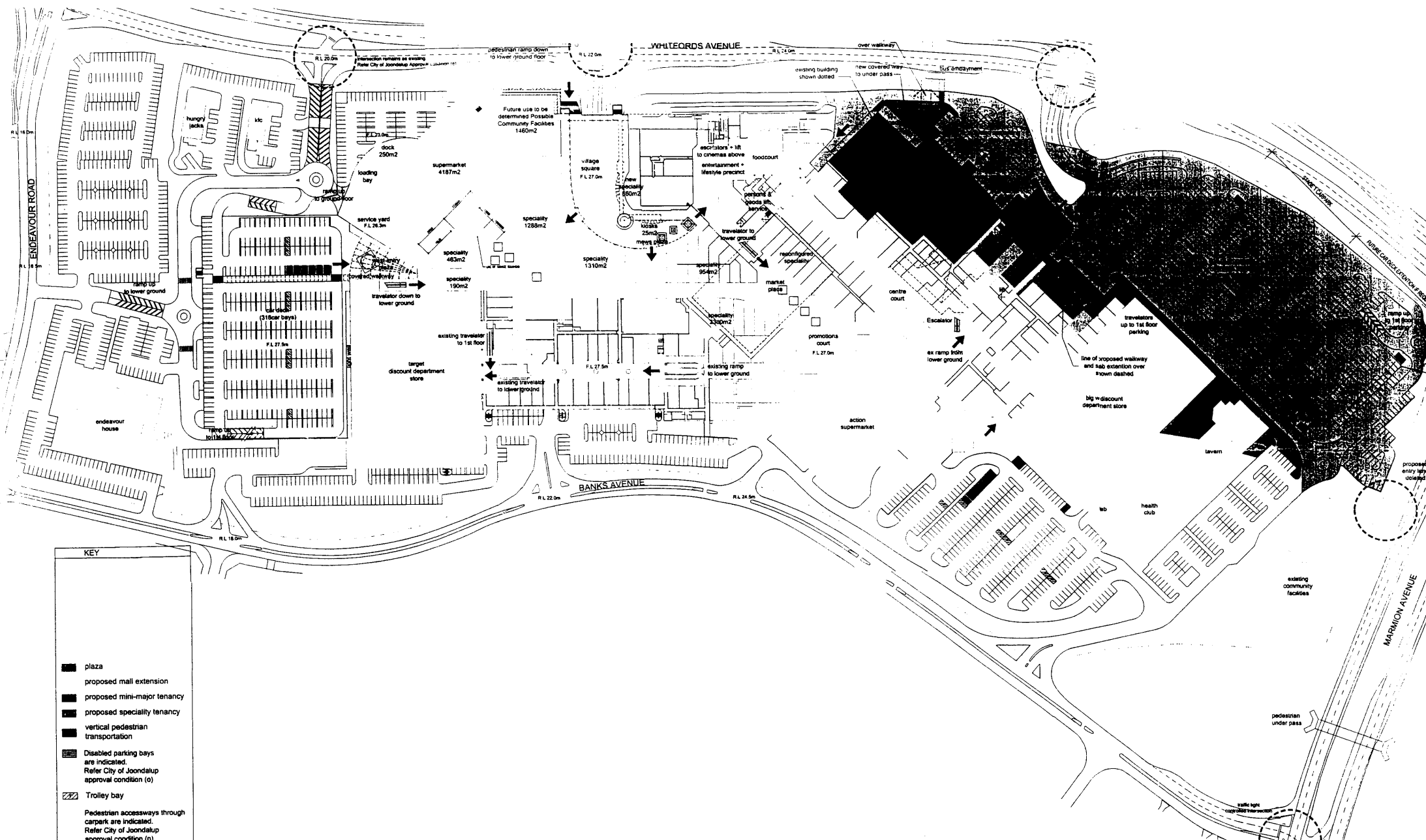
FIG. A.2

	below 750	vehicles per day
	750 - 1,500	vehicles per day
	1,500 - 3,000	vehicles per day
	3,000 - 4,500	vehicles per day
	4,500 - 6,000	vehicles per day
	6,000 - 9,000	vehicles per day
	9,000 - 12,000	vehicles per day
	12,000 - 18,000	vehicles per day
	18,000 - 24,000	vehicles per day
	above 24,000	vehicles per day



Note: External traffic flows are for 2006 Average Thursday.

SOURCE: ULOTH AND ASSOCIATES, JUNE 2000



**KEY**

- plaza
- proposed mall extension
- proposed mini-major tenancy
- proposed speciality tenancy
- vertical pedestrian transportation
- Disabled parking bays are indicated. Refer City of Joondalup approval condition (o)
- Trolley bay
- Pedestrian accessways through carpark are indicated. Refer City of Joondalup approval condition (n)
- major pedestrian entries
- vehicle access

TOTAL CARBAYS GROUND FLOOR 1339

