

**DOG ACT 1976**  
**LOCAL GOVERNMENT ACT 1995**  
*City of Joondalup*  
**Animals Amendment Local Law 2008**

Under the powers conferred by the *Local Government Act 1995*, the *Dog Act 1976* and under all other powers enabling it, the Council of the City of Joondalup resolved on \_\_\_\_\_ to make the "*City of Joondalup Animals Amendment Local Law 2008*".

In this local law, the *City of Joondalup Animals Local Law 1999* as published in the *Government Gazette* on 27 August 1999 and amended as published in the *Government Gazette* on 10 July 2000 and 15 January 2002 is referred to as the principal local law. The principal local law is amended as follows—

**ARRANGEMENT**

PART 1 – PRELIMINARY.....	Clauses 1 – 3
PART 2 – ANIMALS.....	Clauses 4 – 4.7

**PART 1 – PRELIMINARY**

**Title**

- 1 This local law may be referred to as the *City of Joondalup Animals Amendment Local Law 2008*.

**Commencement**

- 2 This local law comes into operation 14 days after the date of its publication in the *Government Gazette*.

**Purpose**

- 3 The purpose of this local law is to amend various clauses in the *Animals Local Law 1999* to ensure information is current with prevailing land descriptions.

**PART 2 - ANIMALS**

**Amendment**

- 4 The *City of Joondalup Animals Local Law 1999* published in the *Government Gazette* on Friday 27 August 1999 and as amended and published in the *Government Gazette* on 10 July 2000 and 15 January 2002, is hereby amended in the following manner:

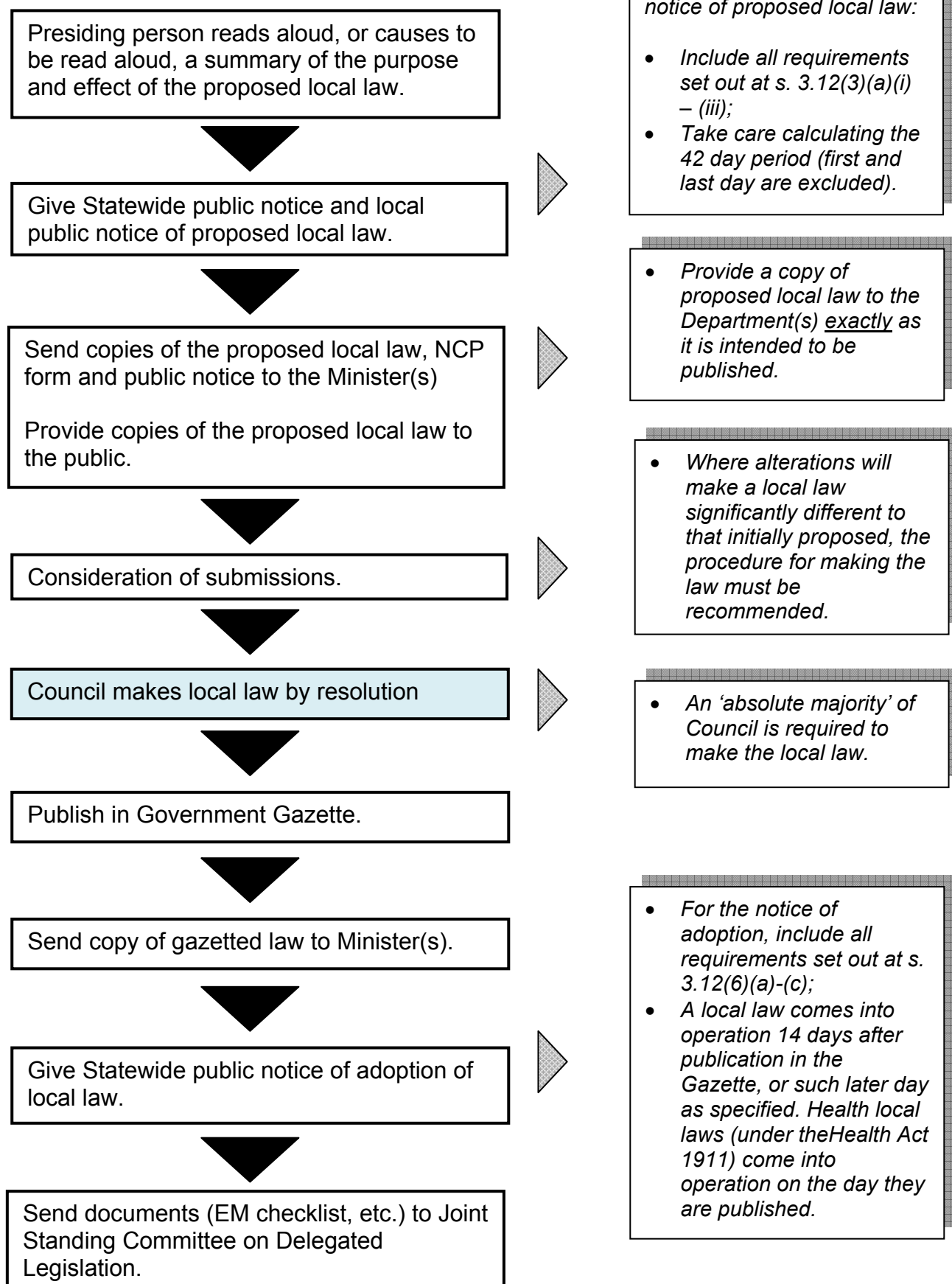
**DOG EXERCISE AREA**

- 4.1 Amend clause 10(2) Dog Exercise Areas by  
Deleting “20561” and substituting “47831”.

**HORSE EXERCISE AREA**

- 4.2 Amend clause 26(6) Horse Exercise Area by:

## LOCAL LAW PROCESS – FLOW CHART (s. 3.12)



Deleting “Swan Location 11918 (Reserve 20561)” and substituting “Foreshore Reserve 47831”.

#### **MISCELLANEOUS**

- 4.3 Amend the Second Schedule – Prohibited Dog Exercise Areas clause 1 by deleting:

“Whitford Node, Hillarys, being Reserve No 39497, except for part Swan Location 10789 as shown delineated in black and stippled on Department of Land Administration Miscellaneous Diagram 678, and Pt Lot 158 of Swan Location 1370 Whitford Avenue Hillarys;”

And substituting:

“Central Node Foreshore Reserve, Hillarys, being Reserve 39497;”

Deleting “Locations 3324 and 9809” from and substituting “Reserve No 48354”.

- 4.4 Amend the Second Schedule – Prohibited Dog Exercise Areas clause 2 by:

Deleting “20561” where it first appears and substituting “47831, within the City of Joondalup”.

Deleting “Swan Location 11918 (Reserve 20561)” and substituting “47831”.

- 4.5 Delete “Second Schedule - Diagram 1 – Dog Exercise Area” map and insert updated “Diagram 1 – Dog Exercise Area” map.

- 4.6 Amend the Third Schedule by:

Deleting “Swan Location 11918 (Reserve 20561)” and substituting “47831”.

- 4.7 Delete “Third Schedule - Diagram 2 – Horse Exercise Area” map and insert updated “Diagram 2 – Horse Exercise Area” map.