

# Seacrest Park Community Sporting Facility Consultation – Frequently Asked Questions

## 1. What is the purpose of this consultation?

Seacrest Park, Sorrento is an active reserve used by a number of sporting clubs and groups. Currently there are limited facilities at the park and the City has been in discussions with a number of sporting clubs regarding the development of a community sporting facility since 2007. In assessing the previous proposals for facilities, the financial cost to the City to deliver the project was acknowledged as a limiting factor. In February 2009, the Federal Government released \$500 million as part of a stimulus package for Community Infrastructure Projects. The City immediately identified the Seacrest Park Community Sporting Facility as a project totalling \$5.2 million that would meet the program guidelines and benefits from the shared funding model (**see attachment 1**). The City only had a four week period to make a submission.

In May 2009, the City received notification from the Federal Government that it had been successful in its application, receiving \$2.6 million towards the project.

In line with the City's Public Participation Strategy, community consultation is now being undertaken regarding the proposed facility at Seacrest Park.

## 2. Who is being consulted?

The City will be directly consulting with the following stakeholders:

- Residents from Sorrento living within 500 metres of the park;
- Representatives from sport and recreation groups currently using the park;
- Representatives from the Marmion Sorrento Duncraig Progress and Ratepayers Association Inc;
- Department of Sport and Recreation;
- WA Football Commission;
- WA Cricket Association.

The City welcomes any other people with an interest in the site to participate in the consultation.

## 3. What facilities are proposed?

The new facility (**see attachment 2**) may include:

- Function and meeting areas
- Space for local sporting clubs
- Toilets and changerooms
- Spectator viewing areas
- Additional floodlighting and parking
- Upgrade to the cricket wicket and practice nets,
- Football goals
- Playground refurbishment.

#### **4. How will the proposed facilities be managed?**

The City will develop a lease agreement which provides a set of guidelines on how the facility would be managed including opening hours and types of activities. The function room, kitchen and offices are proposed to be managed through this lease arrangement.

The sporting ovals and infrastructure, floodlighting and toilets/changerooms will be managed by the City and are able to be hired by the community and sporting groups. The carpark and playground areas will continue to be managed by the City and be available for the community's use.

#### **5. How will potential noise and antisocial behaviour be managed?**

The final design of the facility will take into consideration potential noise and antisocial behaviour issues. The outcomes of the consultation process will provide input into the building location, orientation on the park and lighting, which will ultimately be designed to reduce the impact of the facility on surrounding residents.

In addition, the proposed lease for the new facility will contain conditions to reduce the potential for noise and antisocial behaviour issues at the park. Restricting the type and time of functions is one way the City will consider managing the facility.

#### **6. How will the proposed carpark extension be managed?**

Currently, the existing carpark at Seacrest Park is 'chain locked' by the City during the evening to prevent antisocial behaviour in the area. The carpark for the proposed facility is an extension of the current carpark and as such would continue to have controlled access to deter antisocial behaviour.

#### **7. When will the sports floodlighting be on?**

The proposed sports floodlighting is managed by the City in accordance with the park bookings for sporting activities. Floodlighting is only on for evening oval bookings and is set as per the sports club booking, with floodlighting coming on 30 minutes prior to sunset and turned off 30 minutes after the conclusion of a booking. All floodlighting is in accordance with Australian Standards for large ball sports and would be required to meet the City's planning and building approvals.

#### **8. When does the Community Consultation period close?**

The consultation process will conclude on Monday 6 July 2009.

#### **9. What will the City do with the feedback it receives?**

All information received as part of the City's community consultation process will be included in a report to Council. The report will summarise the feedback received and recommend a course of action for the development of community sporting facilities. The date of the Council meeting will be advertised on the City's website.

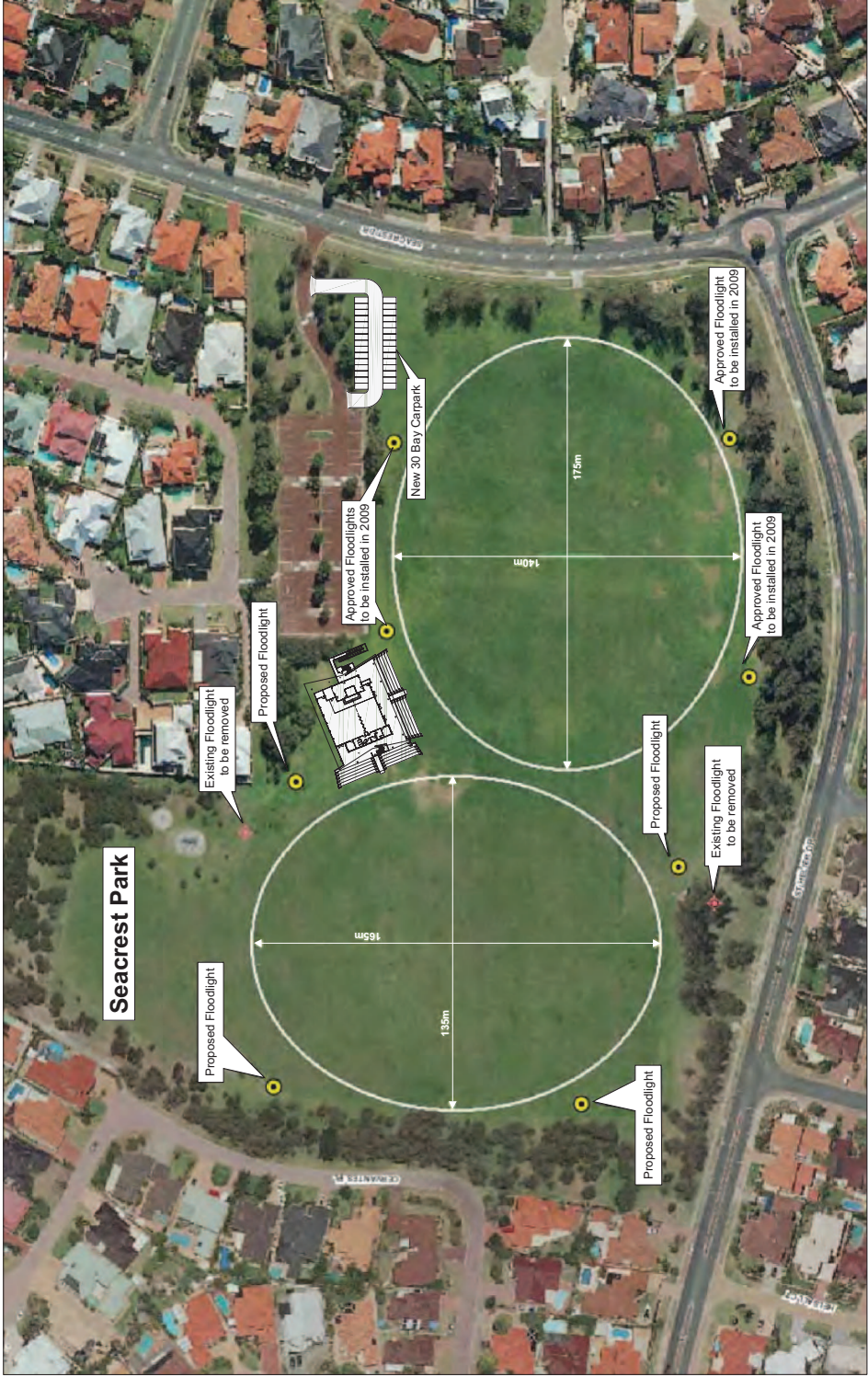
#### **10. What are the time frames for the project?**

Following the conclusion of the consultation period, a report will be taken to Council outlining the results of the community consultation. Should the facility be supported a final concept design will then be developed, taking into consideration the feedback received by the City.

As part of the Federal Government's funding conditions for the project, construction must commence by December 2009.

#### **11. Who do I contact for more information on the project?**

The City's Projects Coordinator – Leisure Planning, **Honni Jacobs**, is available on **9400 4221** or email: [honni.jacobs@joondalup.wa.gov.au](mailto:honni.jacobs@joondalup.wa.gov.au)

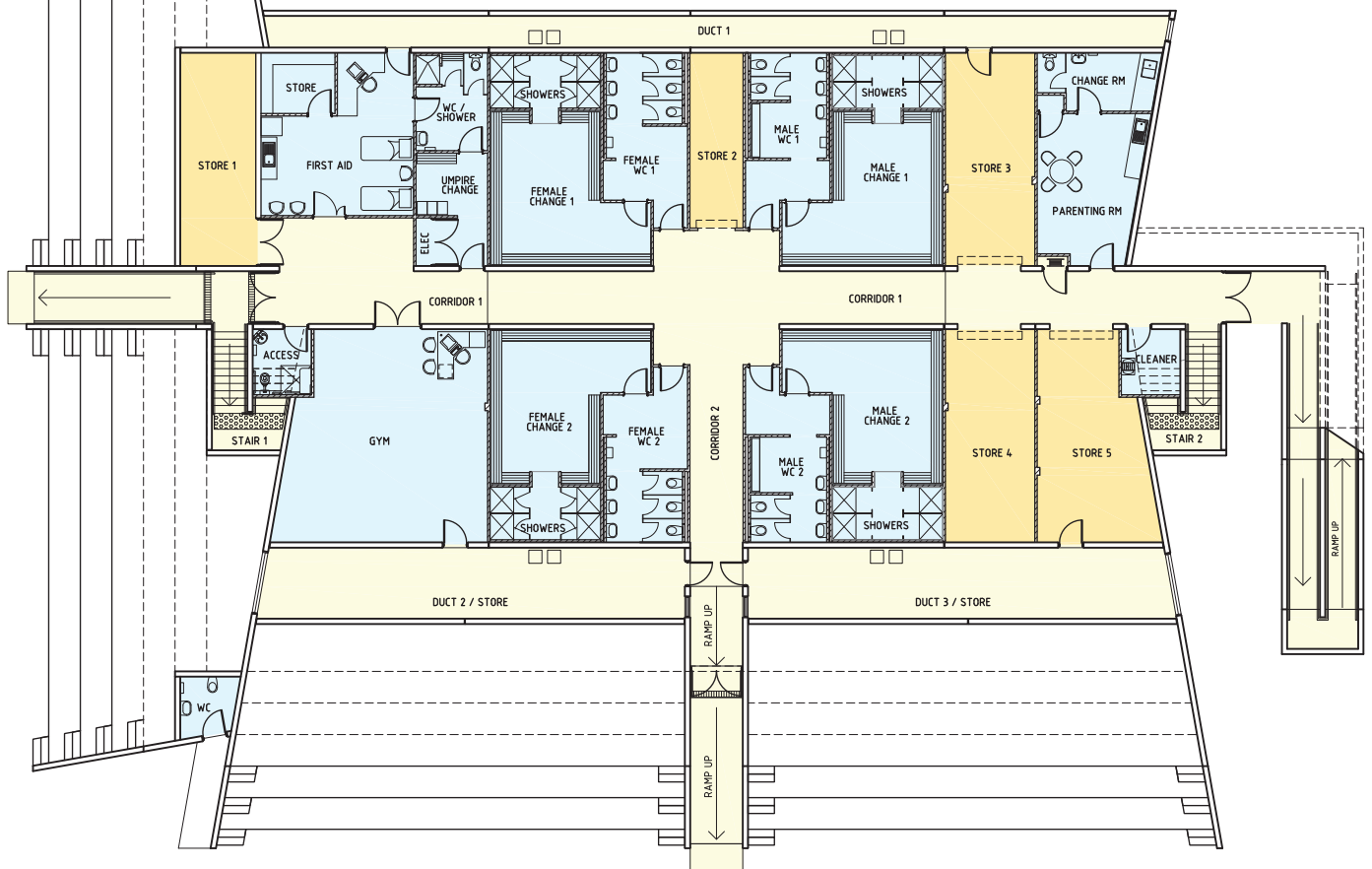


LOCATION PLAN  
1:2000

- Proposed Floodlights: To be installed in conjunction with the development of the community sporting facility.
- Existing Floodlights: To be removed and replaced by the proposed floodlights.
- Approved Floodlights: To be installed in 2009 as part of a project initiated by the Sorrento Duncraig Junior Football Club
- Building Location: Indicative Only

# Attachment 2 Concept Design : Seacrest Community Sporting Facility

GROUND FLOOR PLAN  
1:200



FIRST FLOOR PLAN  
1:200

