

Entry Statement 1

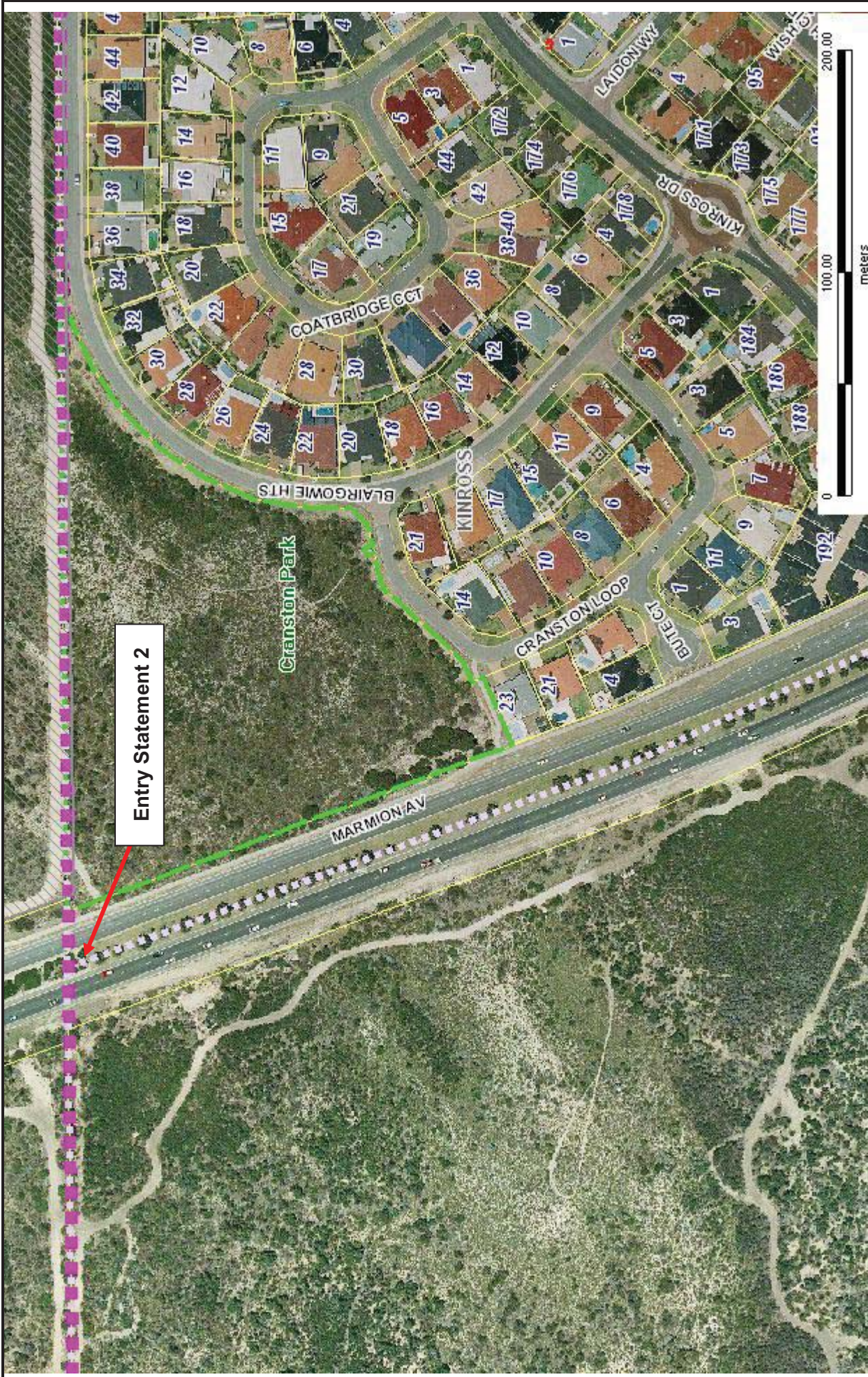
Scale(A4): 1:878 Date: 3 February 2010
 DISCLAIMER: While every care is taken to ensure the accuracy of this data, the City of Joondalup makes no representations or warranties about its accuracy, completeness or suitability for any particular purpose and disclaims all liability for all expenses, losses, damages and costs which you might incur as a result of the data being inaccurate or incomplete in any way and for any reason.



90 Boas Ave, Joondalup WA 6027
 PO Box 21, Joondalup WA 6919
 Ph: 08 9400 4000
 Fax: 08 9300 1383
 info@joondalup.wa.gov.au
 www.joondalup.wa.gov.au

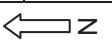


MARMION AVENUE, NORTH OF BEACH ROAD



Entry Statement 2

90 Boas Ave, Joondalup WA 6027
 PO Box 21, Joondalup WA 6919
 Ph: 08 9400 4000
 Fax: 08 9300 1383
 info@joondalup.wa.gov.au
 www.joondalup.wa.gov.au



Scale(A4): 1:2373 Date: 3 February 2010
 DISCLAIMER: While every care is taken to ensure the accuracy of this data, the City of Joondalup makes no representations or warranties about its accuracy, completeness or suitability for any particular purpose and disclaims all liability for all expenses, losses, damages and costs which you might incur as a result of the data being inaccurate or incomplete in any way and for any reason.

MARMION BEACH, ADJACENT TO BOUNDARY OF CRANSTON PARK

LEGEND

- **PRIORITY 1**
 - MARMION AVE
 - PRIMARY DISTRIBUTOR ROAD FROM BEACH RD TO OCEAN REEF RD
 - DISTRICT DISTRIBUTOR (A) ROAD FROM OCEAN REEF RD NORTH
 - JOONDALUP DRIVE
 - DISTRICT DISTRIBUTOR (A) ROAD

- **PRIORITY 2**
 - OCEAN REEF RD
 - DISTRICT DISTRIBUTOR (A) ROAD
 - WHITFORDS AVE
 - DISTRICT DISTRIBUTOR (A) ROAD
 - HEPBURN AVE
 - DISTRICT DISTRIBUTOR (A) ROAD
 - WARWICK RD
 - DISTRICT DISTRIBUTOR (A) ROAD
 - BEACH RD
 - DISTRICT DISTRIBUTOR (A) ROAD
 - WEST COAST DR
 - DISTRICT DISTRIBUTOR (B) ROAD
 - DAYALLA RD
 - LOCAL DISTRIBUTOR ROAD & SHOPPING PRECINCT NORTH OF BEACH ROAD
 - DISTRICT DISTRIBUTOR (B) ROAD SOUTH OF BEACH ROAD
 - ERINDALE RD
 - DISTRICT DISTRIBUTOR (A) ROAD & SHOPPING PRECINCT

- **PRIORITY 3**
 - CONNOLLY DR
 - DISTRICT DISTRIBUTOR (A) ROAD
 - FREEWAY EXITS ONTO
 - DISTRICT DISTRIBUTOR (A) ROADS

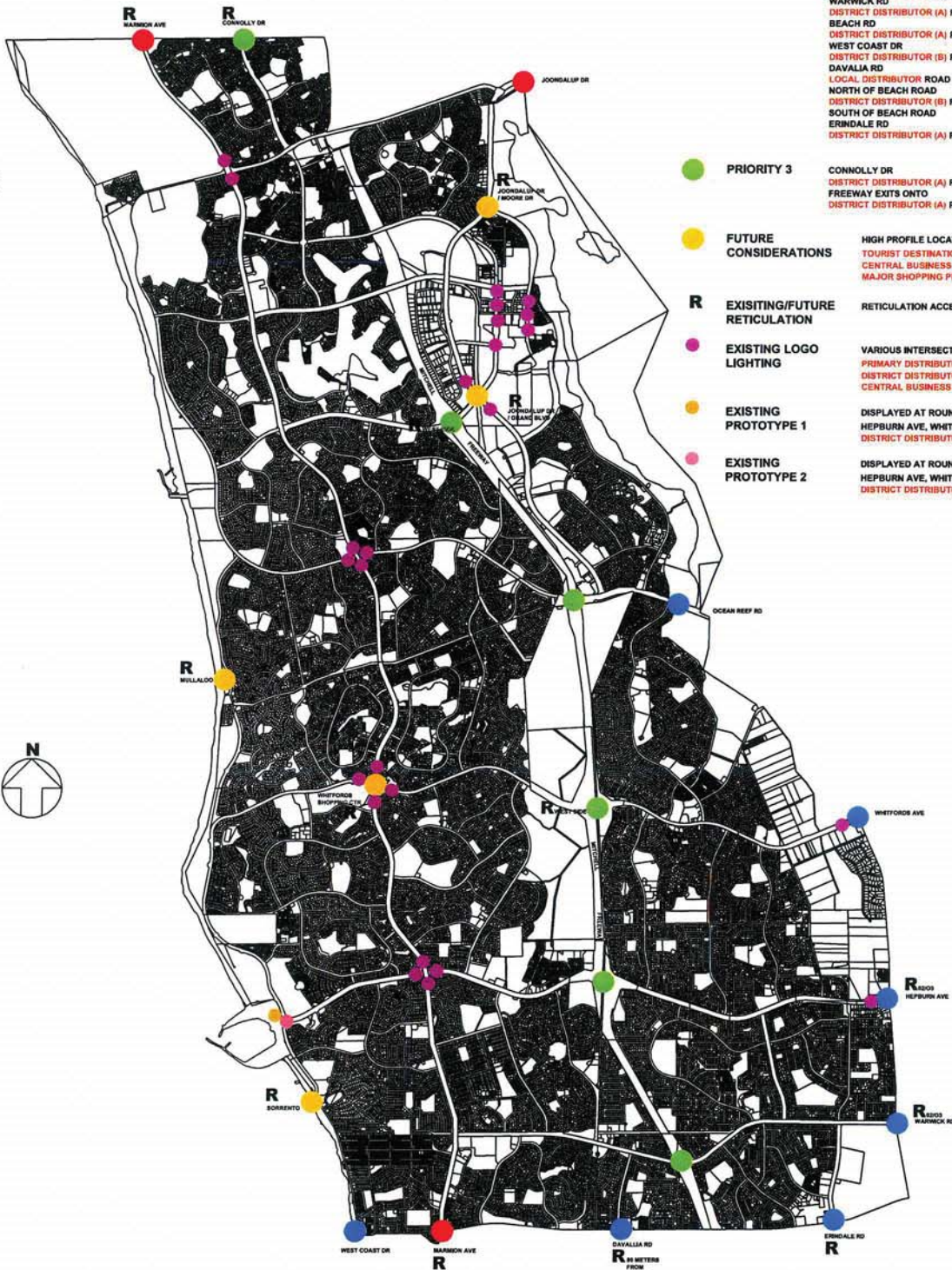
- **FUTURE CONSIDERATIONS**
 - HIGH PROFILE LOCATIONS
 - TOURIST DESTINATIONS
 - CENTRAL BUSINESS DISTRICT
 - MAJOR SHOPPING PRECINCT

- R** **EXISTING/FUTURE RETICULATION**
 - RETICULATION ACCESSIBLE

- **EXISTING LOGO LIGHTING**
 - VARIOUS INTERSECTIONS ON
 - PRIMARY DISTRIBUTOR ROAD
 - DISTRICT DISTRIBUTOR (A) ROADS
 - CENTRAL BUSINESS DISTRICT

- **EXISTING PROTOTYPE 1**
 - DISPLAYED AT ROUNDABOUT AT INTERSECTION
 - HEPBURN AVE, WHITFORDS AVE AND WEST COAST DR
 - DISTRICT DISTRIBUTOR (A) AND (B) ROADS

- **EXISTING PROTOTYPE 2**
 - DISPLAYED AT ROUNDABOUT AT INTERSECTION
 - HEPBURN AVE, WHITFORDS AVE AND WEST COAST DR
 - DISTRICT DISTRIBUTOR (A) AND (B) ROADS

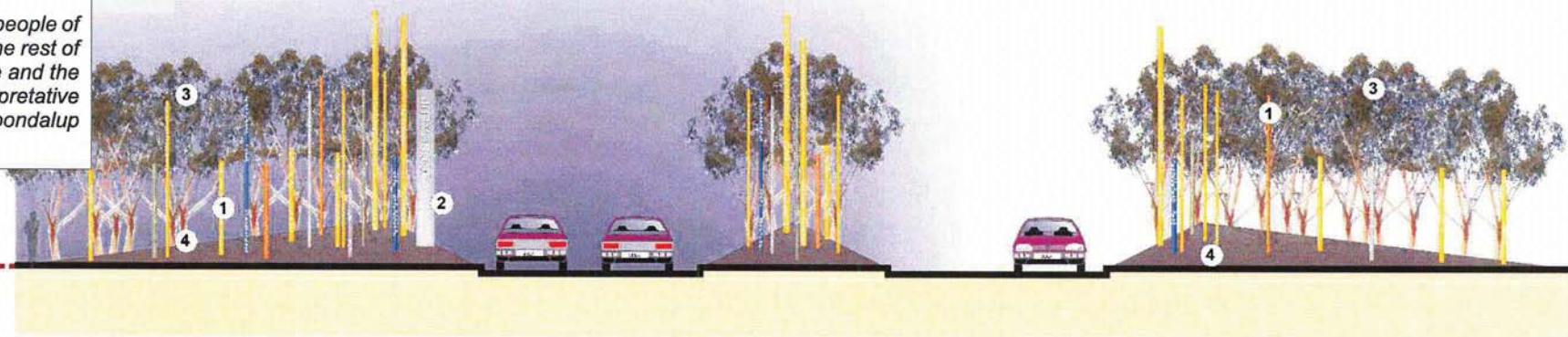


PROPOSED AND EXISTING LOCATIONS

CONCEPT

A memorable gateway into the City of Joondalup, with visitors and residents "moving through" the design.

A clear Joondalup sign informs people of where they are entering while the rest of the design mimics a city skyline and the individual elements are an interpretative reflection of what is the City of Joondalup (past, present and future)



**① CONSTANT ELEMENT ONE
POLES**

The staggered line of poles represent a city skyline. Furthermore, each pole reflects a specific concept through its colour (matte) and motif. The reflective stick on motif on portions of each pole will glow at night from headlights). The number of each colour will vary depending on location.

**② CONSTANT ELEMENT TWO
JOONDALUP SIGN**

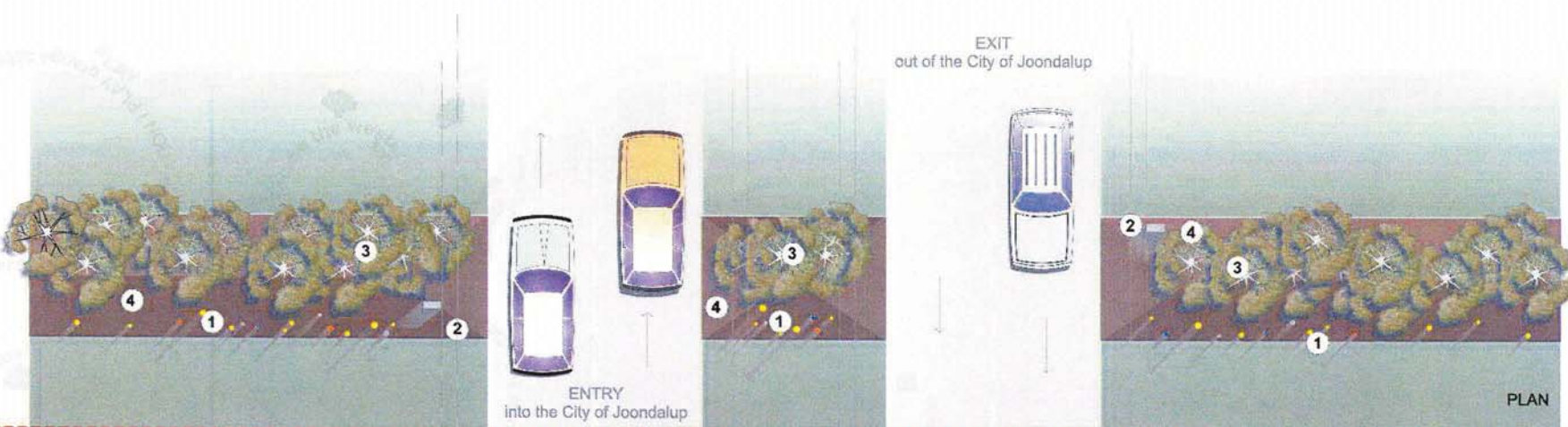
A consistent element at each location, it clearly states where a person is. Constructed from brushed steel with the text made from a reflective material that is brightly uplit at night. (5m tall x 0.6m wide)The exit sign is half width at 5m tall x 0.3m wide.

**③ CONSTANT ELEMENT THREE
TREES**

A species suited to each location will be chosen and grouped on the back batter to form a gateway entrance behind the poles. Dim canopy/trunk uplighting will create a night time spectacle.

**④ CONSTANT ELEMENT FOUR
GROUND TREATMENT**

A clear ground treatment of gravel will ensure all focus is on the gateway of poles and trees. This clear surveillance will discourage vandals. The lifted ground plane creates a crescendo to the gateway for vehicles to move through.



1.5M NON-FRANGIBLE SETBACK
1M FRANGIBLE SETBACK

**JOONDALUP ENTRY STATEMENTS
TYPICAL LOCATION**

scale: 1:150 (A3) / date: Oct 2008

0 1 2 3 4 5 10m

