

## MACDONALD PARK – WORKING GROUP FACILITIES MATRIX

CLUB	PRIORITY	FACILITY	EXISTING Y/N	IDENTIFIED NEED	COJ SIZE ESTIMATE	COMMENT
<b>WHITFORDS JUNIOR FOOTBALL CLUB</b>	1	Storage	Y	Existing storage inadequate. Required for team equipment, 46 kit bags (1200 x 400), medical kits, BBQS, external access	25m <sup>2</sup>	Provision of area double existing space, which is 3m <sup>2</sup> .
	2	Main Hall	Y	Existing too small for requirements.	Not specified	Extension to existing main hall. Enlargement and refurbishment of kitchen.
	3	Changerooms	Y	Existing too small for requirements. Requested increase to accommodate team size and removal of wall in away team.	70m <sup>2</sup>	Extension to existing lower ground changerrooms. Refurbishment of existing upper changerrooms (removal of dividing wall)
<b>WHITFORDS AMATEUR FOOTBALL CLUB</b>	1	Main Hall	Y	Existing too small for requirements. Not enough storage for bar. Improve kitchen equipment and size to accommodate meal preparation for 100 people. 80 seated Thursdays and would like to accommodate 200 seated Saturdays.	Main Hall extensions 90m <sup>2</sup> To 140m <sup>2</sup>  Kitchen 30m <sup>2</sup>  Bar 30m <sup>2</sup>  Bar store 30m <sup>2</sup>	Extension to existing main hall. Enlargement and refurbishment of kitchen and bar area. Extension relates to 270m <sup>2</sup> total or 165 seated or the preferred 320m <sup>2</sup> or 200 seated.
	2	Changerooms	Y	Existing too small for requirements. Required to accommodate changeover between training/games. Happy with existing away changerrooms. New changerroom to be divided into separate areas.	70m <sup>2</sup>	Extension and refurbishment of existing lower ground changerrooms.

CLUB	PRIORITY	FACILITY	EXISTING Y/N	IDENTIFIED NEED	COJ SIZE ESTIMATE	COMMENT
	3	Storage	Y	Existing inadequate for requirements. Access to oval – prefer to be under extension	40m <sup>2</sup>	Provision of storage included in lower ground extension/ refurbishment could be linked and broken into two areas.
	4	Balcony	Y	Existing balcony not adequate or practical for current spectator numbers	Double existing balcony	Extend balcony to go over the ground floor extension. Prefer to fac oval.
<b>WHITFORDS SENIOR CRICKET CLUB</b>	1	Storage	Y	Existing inadequate and not convenient to change/club rooms. 8 kit bags 1 x 1.5m Match existing furniture store	20m <sup>2</sup>	
	2	Bar and Bar storage	Y	Inadequate for existing and future needs	Bar 30m <sup>2</sup> Bar Store 35m <sup>2</sup>	Enlargment and refurbishment of existing bar and provision of additional storage aligned to bar area. Prefer to see ovals from bar.
	3	Changerooms	Y	Inadequate for existing needs and poorly aligned to oval. Request for another set of changerooms	70m <sup>2</sup>	Extension and refurbishment of existing lower ground changerooms. Would like changerooms closer to oval.
	4	Balcony	Y	Poorly aligned to oval to match viewing		Extension of balcony and provision of glass to viewing end of existing club rooms.
<b>WHITFORDS JUNIOR CRICKET CLUB</b>	1	Storage	Y	Inadequate for existing and future needs. 38 kit bags (1x1.5m), BBQ.	25m <sup>2</sup>	Provision of an area at least double what is already provided.
	2	Balcony	Y	Want to be able to use main hall and balcony for BBQ	Double existing balcony	By improving access to main hall via bifolds and increasing balcony allows set up of BBQ / Kiosk area.

CLUB	PRIORITY	FACILITY	EXISTING Y/N	IDENTIFIED NEED	COJ SIZE ESTIMATE	COMMENT
<b>WHITFORDS HOCKEY CLUB</b>	1	Main Hall	Y	Inadequate size for existing and future needs. Current size of lesser hall 140m <sup>2</sup> . Weekly minimum 100 seated. 2 <sup>nd</sup> week 150 seated located adjacent	160m <sup>2</sup> Or 240m <sup>2</sup>	Provision of new club rooms aligned with proposed new turf pitch including suitable size kitchen. Removal of tuart trees to accommodation turf pitch.
	2	Storage	Y	Inadequate for existing and future needs. Request an equipment and uniform store - outdoor/indoor. Requested to double existing internal storage.	40m <sup>2</sup>	Provision of external and internal access storage in new clubs rooms (as applicable) OR Provision of external access storage and increase in size of existing internal access storage with an area to sell uniforms.
	3	Changerooms	Y	Alignment required with new clubroom. Requested new facilities aligned to oval. Required seating meals/drinks after games.	4 x 25m <sup>2</sup>	May be staged providing provision allowed for in new building. Require changerrooms for up to 16 players and 3 officials.
	4	Kitchen/Bar	N	Bar and kitchen to have servery	30m <sup>2</sup>	Required fridges with drinks to be viewed from storage areas.

RANKING: (points allocated: Priority 1 – 5pts, Priority 2 – 4pts, Priority 3 – 3pts, Priority 4 – 2pts)

Storage: 23pts Bar/bar storage: 6pts

Main Hall: 14pts - Includes WHC Viewing Area: 4pts

Request for new facility

Changerooms: 13pts Access: 4pts

## FORREST PARK – WORKING GROUP FACILITIES MATRIX

CLUB	PRIORITY	FACILITY	EXISTING Y/N	IDENTIFIED NEED	COJ SIZE ESTIMATE	COMMENT
<b>NORTHERN WARRIORS VETERANS FOOTBALL CLUB</b>	1	Changerooms	Y	Inadequate for current and future needs. Require two changerooms to accommodate 30 people in each	2 x 35m <sup>2</sup>	Extension and/or provision of new changerooms incorporating associated shower/toilet facilities to accommodate up to 80 players
	2	Club Room	N	Currently utilise existing changeroom for “club” activities. Weekly and ten events per annum	80m <sup>2</sup>	Provision of new clubroom including kitchen/bar areas. 80m <sup>2</sup> for weekly games for 50 people. 160m <sup>2</sup> would be ideal to accommodate 100 seated.
	3	Storage	Y	Inadequate for current and future needs	23m <sup>2</sup>	Provision of new storage areas (approx 5m x 3.5m)
	4	Kitchen / bar /kiosk		Separate kitchen and bar	Kitchen 30m <sup>2</sup> Bar 30m <sup>2</sup>	If the size was increased the club may accept a combined solution with adequate servery.
	5	Verandah	Y	Inadequate for current and future needs – hold BBQ’s after training	75m <sup>2</sup>	Extension to existing verandah
<b>WHITFORDS AMATEUR FOOTBALL CLUB</b>	1	Changerooms	N	Club will use facility for matches in addition to MacDonald Park. Require two separate changerooms.	2 x 35m <sup>2</sup>	Provision of new changerooms incorporating associated shower/ toilet facilities
	2	Kiosk	N	Club will use facility for matches in addition MacDonald Park	30m <sup>2</sup>	Provision of kiosk and associated fit out for use on match days linked to kitchen.
	3	Verandah	Y	Current size inadequate for viewing matches	75m <sup>2</sup>	Extension to existing verandah.

CLUB	PRIORITY	FACILITY	EXISTING Y/N	IDENTIFIED NEED	COJ SIZE ESTIMATE	COMMENT
<b>WHITFORDS JUNIOR FOOTBALL CLUB</b>	1	Changerooms	N	Club will use facility as “second” home. Requires two changerooms	2 x 35m <sup>2</sup>	Provision of new changerooms suitable to house junior football teams incorporating associated shower/toilet facilities.
	2	Storage	N	Required for training and match day equipment associated with use of facility	6m <sup>2</sup>	Provision of storage suitable for storing equipment – double existing.
	3	Meeting Room	N	Associated with the clubs use of the facility as a “second” home	80m <sup>2</sup>	Provision of increase in meeting room would be of benefit but not essential
	4	Verandah	Y	Current size and location inadequate for viewing matches	75m <sup>2</sup>	Extension and repositioning of existing verandah

RANKING: (points allocated: Priority 1 – 5pts, Priority 2 – 4pts, Priority 3 – 3pts, Priority 4 – 2pts)

Changerooms: 15pts

Storage: 7pts

Verandah: 7pts

Club Room: 6pts

Kiosk: 4pts

## USER REQUIREMENTS

### STORAGE - EXTERNAL

USER	SIZE/REQUIREMENTS	COMMENTS
SORRENTO DUNCRAIG JUNIOR FOOTBALL CLUB	4.0m x 4.0m x 2.8m (height)	Goal posts, tackle and bump bags, goal post protectors, BBQ, linemarkers
SORRENTO DUNCRAIG JUNIOR CRICKET CLUB	As per Greenwood Cricket Club store at Pennistone Park.	<p>Secure storage to accommodate approx 30 large sports hold all bags (size: 1200 x 480 x 420mm) plus fielding aids – stumps, rebound nets etc.</p> <p>The area to contain racking shelves and could be shared with SDCC if secure dividing caging was provided.</p> <p>Storage area MUST have external access and internal access would be useful.</p>
SORRENTO DUNCRAIG CRICKET CLUB	Dependent on layout of the building	<p>Storage to accommodate 9 kit bags (1200 x 800 x 500mm) – stored on shelves or racks, bowling machine (1000 x 1000 x 500mm) at ground level.</p> <p>Storage for BBQ.</p>

## USER REQUIREMENTS

### STORAGE - INTERNAL

USER	SIZE/REQUIREMENTS	COMMENTS
<p>SORRENTO DUNCRAIG JUNIOR FOOTBALL CLUB</p> <ul style="list-style-type: none"> <li>Food &amp; Drinks</li> <li>General</li> </ul>	<p>Currently 1.9m x 2.2m x 2.8 (height) – fully shelved</p> <p>Currently 2 linked rooms 1.9m x 3.6m and 2.8m x 7.4m</p>	<p>Currently barely adequate; fridge and freezer housed in general storage, ideally should be in food &amp; drinks storage.</p> <p>Currently barely adequate.</p>
<p>SORRENTO DUNCRAIG JUNIOR CRICKET CLUB</p> <ul style="list-style-type: none"> <li>Within kitchen</li> </ul>		<p>Individual lockable storage cupboard suitable for storing slabs of soft drink, water bottles, confectionary and other items that would be sold through the canteen on game days.</p>
<p>SORRENTO DUNCRAIG CRICKET CLUB</p> <ul style="list-style-type: none"> <li>Kitchen</li> <li>General</li> </ul>	<p>Dependent on layout of building</p> <p>1 x Industrial 2 door fridge 1 x Single door fridge</p> <p>Space under kitchen bench tops for larger items.</p>	<p>In addition to the City provided fridge allowing JCC and FC to share a single door fridge for their seasons and leave the large industrial fridge (containing alcohol) to be locked separately for the exclusive use of the SCC.</p> <p>Storage for merchandise, club valuables (new cricket balls etc) – preferably lockable cabinets either within storage area or in meeting room/ umpires changeroom.</p>

**USER REQUIREMENTS**

**FUNCTION ROOM**

<b>USER</b>	<b>SIZE/REQUIREMENTS</b>	<b>COMMENTS</b>
SORRENTO DUNCRAIG JUNIOR FOOTBALL CLUB	Currently 19.0m x 11.0m (209m <sup>2</sup> )  Ideally require an additional 40m <sup>2</sup> – total 250m <sup>2</sup>	
SORRENTO DUNCRAIG JUNIOR CRICKET CLUB	160m <sup>2</sup> x 180m <sup>2</sup> or larger if design permits.	
SORRENTO DUNCRAIG CRICKET CLUB	To accommodate 100pax seated – 10 tables x 10pax	



## USER REQUIREMENTS

### SPECIAL EVENTS/FUNCTIONS

USER	SIZE/REQUIREMENTS	COMMENTS
<p>SORRENTO DUNCRAIG JUNIOR FOOTBALL CLUB</p> <ul style="list-style-type: none"> <li>• Meetings</li> <li>• Social Functions</li> <li>• Vote Count Nights</li> <li>• Team meetings/get together</li> </ul>	<p>Minimum 1 per month (usually 2) 7.00pm – 10.00/11.00pm</p> <p>4 per year Friday or Saturday x 2 Midweek x 2 7.00pm – 12.00am</p> <p>2 per year – midweek 6.30pm – 10.00pm</p> <p>4 – 6 per season 6.30pm to 9.30pm</p>	Liquor License required
<p>SORRENTO DUNCRAIG JUNIOR CRICKET CLUB</p> <ul style="list-style-type: none"> <li>• Presentation Night</li> <li>• Committee Meetings</li> <li>• Fund Raisers</li> </ul>	<p>Held last week in March/first week in April – mid week. 6.00pm – 9.00pm</p> <p>Mid week Approx 6 meetings/season 7.00pm – 9.30pm 8pax – committee only</p> <p>2 functions per season – Quiz Night etc Friday or Saturday night 7.00pm – 11.30pm Max 10 tables of 10pax (100 members/guest seated)</p>	<p>Service of alcohol required.</p> <p>Service of alcohol required.</p>
<p>SORRENTO DUNCRAIG CRICKET CLUB</p>	<p>3 per season (October to March)</p> <ul style="list-style-type: none"> <li>• quiz night – approx 100pax</li> <li>• trophy night – approx 50pax</li> <li>• sportsman’s night – approx 50pax</li> </ul>	Number of extraordinary functions dependent on normal hours of operation.

## USER REQUIREMENTS

### HOURS OF OPERATION

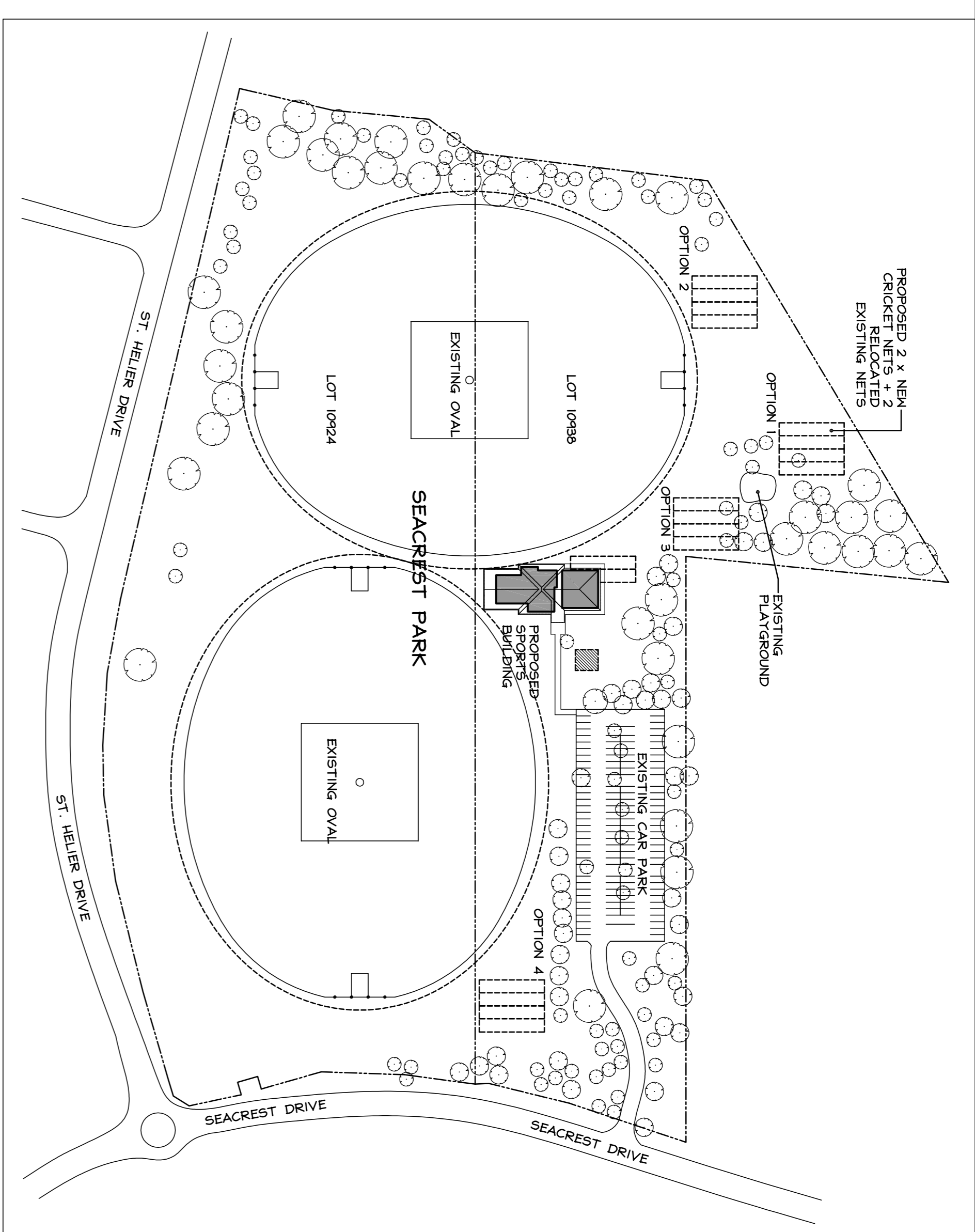
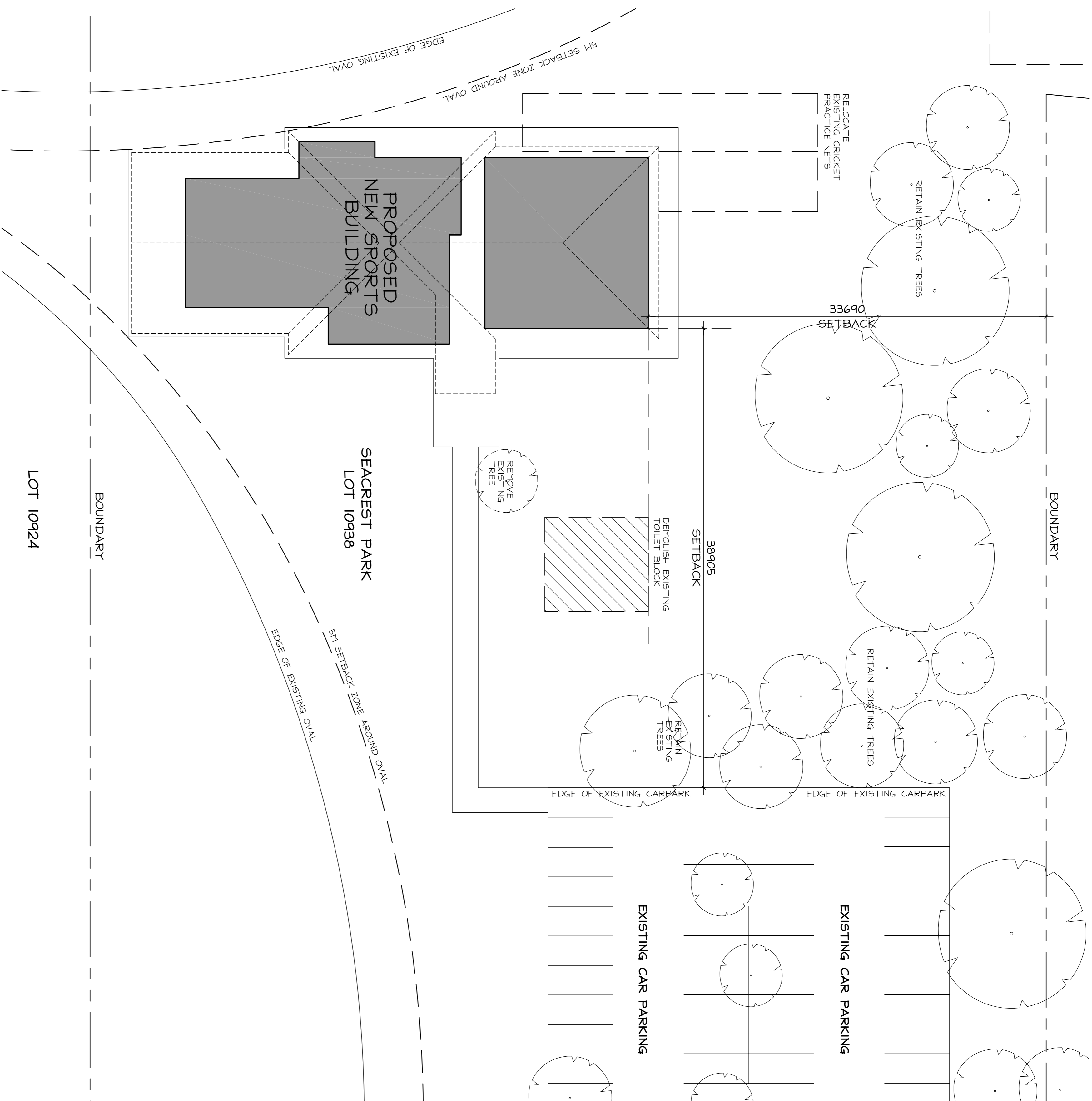
USER	SIZE/REQUIREMENTS	COMMENTS
SORRENTO DUNCRAIG JUNIOR FOOTBALL CLUB		
SORRENTO DUNCRAIG JUNIOR CRICKET CLUB <ul style="list-style-type: none"> <li>• Game Days</li> <li>• Training</li> </ul>	Saturday 8.00am – 12.00pm Sunday 8.00am – 12.00pm  Tues, Wed, Thurs 4.30pm – 7.00pm	. Access required from 7.30am  Access required from 7.30am  October through to the end of March
SORRENTO DUNCRAIG CRICKET CLUB <ul style="list-style-type: none"> <li>• Tuesday</li> <li>• Thursday</li> <li>• Saturday</li> </ul>	4.30pm – 10.00pm  4.30pm – 11.00pm  12.00pm – 12.00am	Training, committee meetings, general administration tasks  Training, BBQ, team selection  Match days, post awards, BBQ
SEACREST RESIDENTS <ul style="list-style-type: none"> <li>• Monday to Sunday</li> <li>• Saturday</li> </ul> CAR PARKING <ul style="list-style-type: none"> <li>• Monday to Sunday</li> <li>• Saturday</li> </ul>	8.00am – 8.00pm 8.00am – 10.00pm  Gates locked 8.30pm Gates locked 10.30pm	Operating without a liquor license

## USER REQUIREMENTS

### ADDITIONAL REQUESTS

USER	SIZE/REQUIREMENTS	COMMENTS
SORRENTO DUNCRAIG JUNIOR FOOTBALL CLUB		
SORRENTO DUNCRAIG JUNIOR CRICKET CLUB	External BBQ area	Semi enclosed sheltered from prevailing winds
SORRENTO DUNCRAIG CRICKET CLUB		
SEACREST RESIDENTS		





Project		description	
SEACREST PARK SPORTS PAVILION		PROPOSED SITE & LOCATION PLANS	
Location		AK	checked
93 SEACREST DRIVE, SORRENTO		NP	date
			15.12.2009
Scale		Project no	121.09
1:200		Draw no	SK08
N/S		Rev	-02
<b>HODGGE + COLLARD ARCHITECTS</b> 1st Floor, 38 Robertson Street, West Perth, WA 6005 Ph: (08) 9322 5144 Fax: (08) 9322 5740 Email: admin@hodgdecollard.com			





SCHEDULE OF ACCOMMODATION	
Lesser Hall	161 sqm
Lesser Hall Kitchen	29.1 sqm
Lesser Hall Bar	14.5 sqm
Storage	7.4/13.1 sqm
Lesser Hall Furniture Storage	15.2 sqm
Main Hall	180 sqm
Main Hall Kitchen	35.2 sqm
Main Hall Bar	27.4 sqm
Coolroom	15.2 sqm
Main Hall Furniture Storage	16.8 sqm
Future Bar Coolroom	15.2 sqm
Female Toilet Extension	12 sqm
Dog Trainer Store	15 sqm
New SCC Store	32 sqm
New JCC Store	25.3 sqm
New AFC Changerooms	70 sqm
AFC Showers	24.6 sqm
New JFC Store	20 sqm
New AFC Store	40 sqm
New Hockey Store	32 sqm
Hockey Changerooms	76.2 sqm
Hockey Showers	36 sqm
<b>TOTAL GROUND FLOOR AREA</b>	<b>1040.1 sqm</b>
<b>TOTAL BASEMENT FLOOR AREA</b>	<b>184.7 sqm</b>
<b>TOTAL</b>	<b>1224.8 sqm</b>

SCHEDULE OF ADDITIONS	
LOWER EASTERN EXTENSION	79.1 sqm
SOUTHERN EXTENSION	30.3 sqm
WESTERN EXTENSION	166.9 sqm
<b>TOTAL =</b>	<b>275.2 sqm</b>

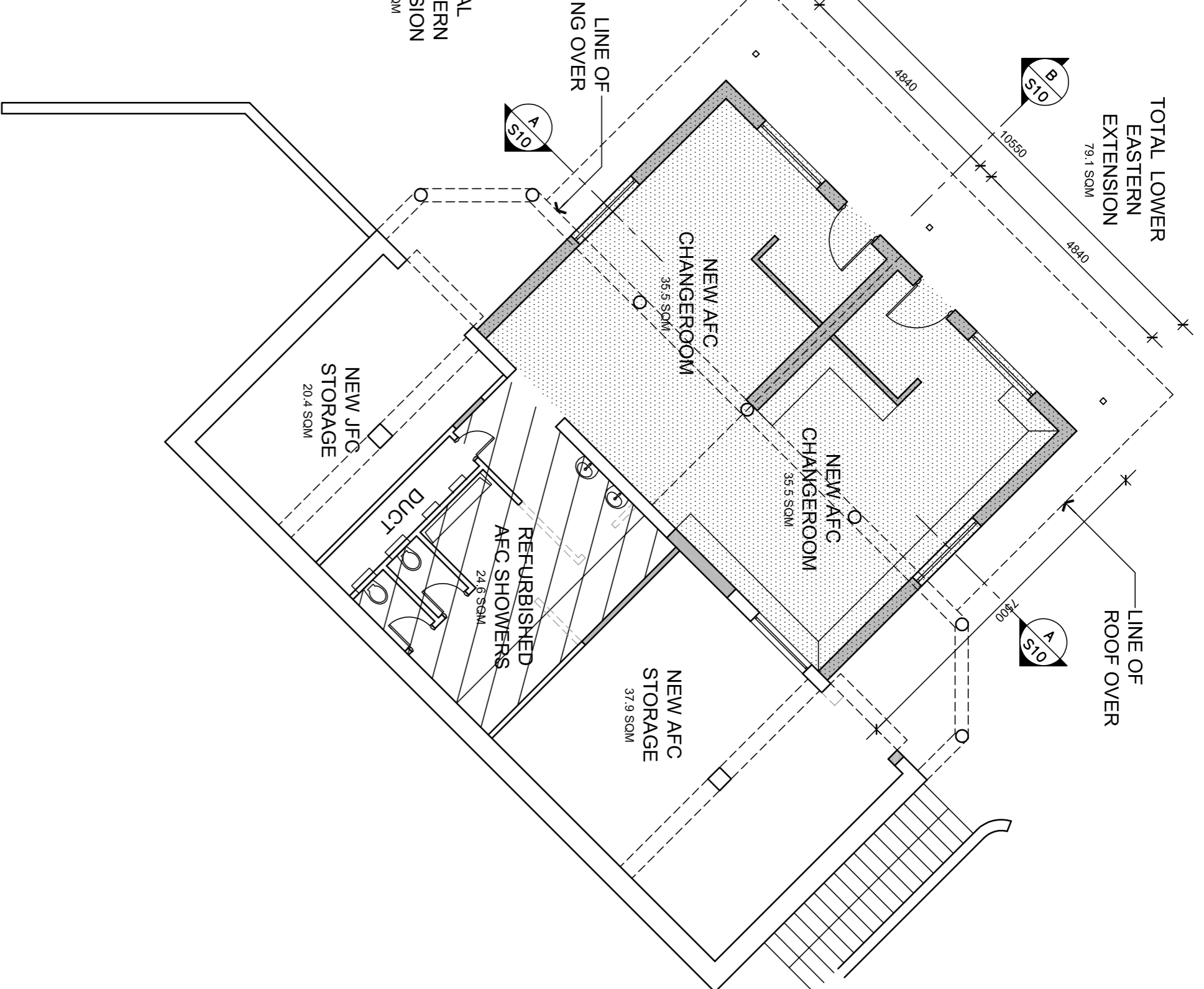
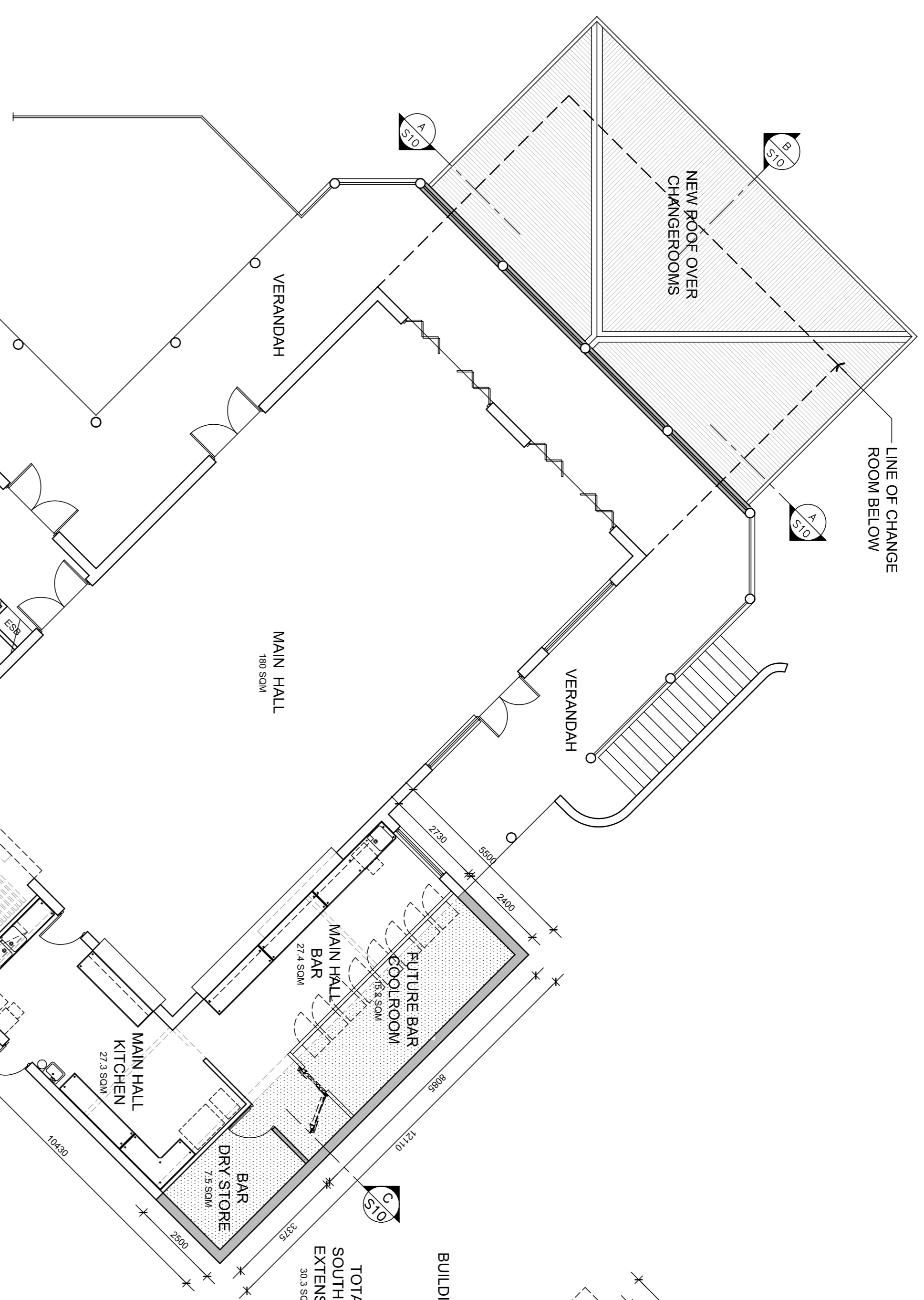
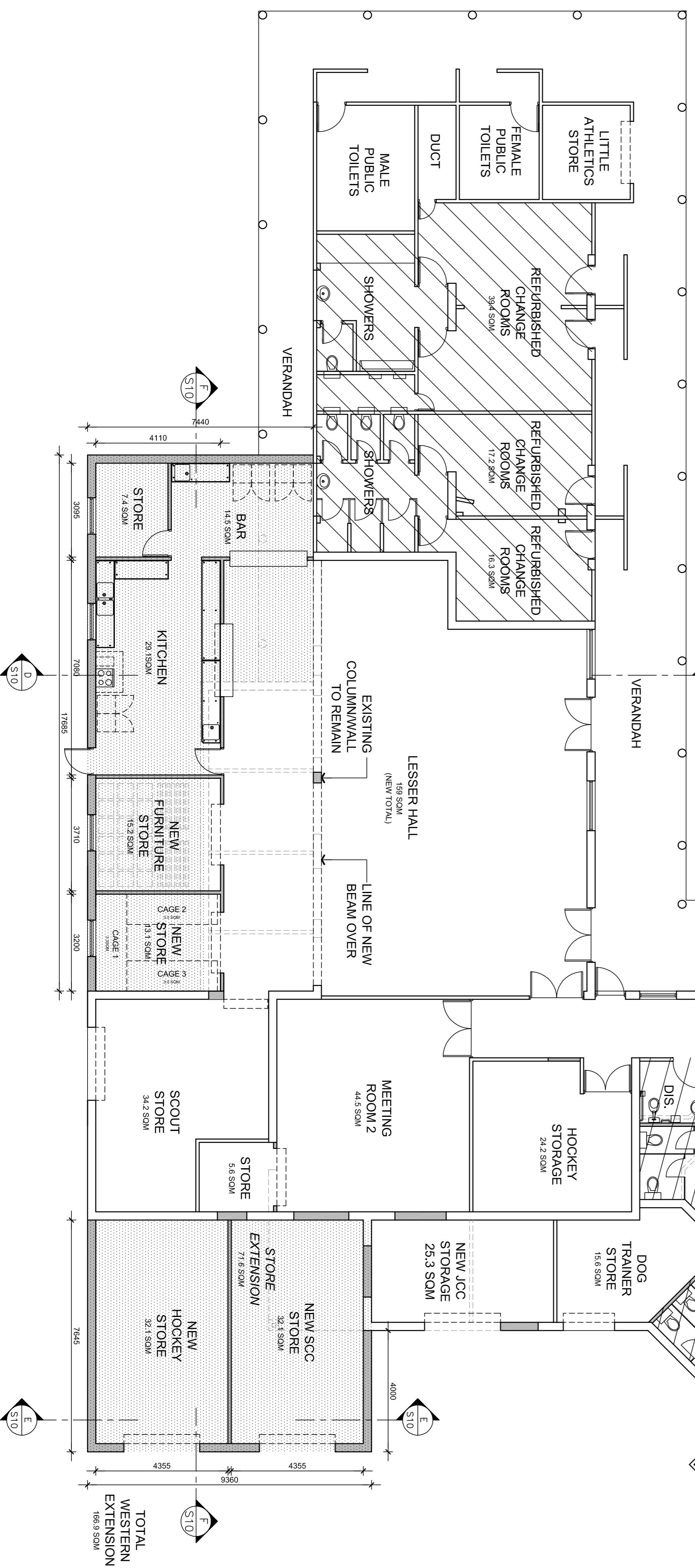
SCHEDULE OF REFURBISHMENTS	
HOCKEY CHANGEROOMS	111.2 sqm
MAIN HALL TOILETS	53.9 sqm
AFC SHOWERS	24.6 sqm
<b>TOTAL =</b>	<b>189.7 sqm</b>

- LEGEND**
- ADDITION TO EXISTING BUILDING
  - RENOVATION OF EXISTING FACILITIES
  - WALL - EXISTING
  - WALL - TO BE REMOVED
  - WALL - NEW

**OPTION 4a**

**PROPOSED GROUND FLOOR PLAN**

SCALE 1:100 @ A1



**PROPOSED BASEMENT PLAN**

SCALE 1:100 @ A1

Project		Macdonald Park Community Facilities	
Location		11 Macdonald Avenue, Padbury	
drawn	MC	description	PROPOSED GROUND FLOOR PLAN
checked	NP	scale	1:100
date	11.02.2010	project no	121.09.01
dwg no	SK12	rev	

**HODGE+COLLARD ARCHITECTS**

Third Floor, 38 Reardon Street, West Perth, WA 6005  
 Ph: (08) 9322 5144 Fax: (08) 9322 5740  
 Email: admin@hodgecollard.com

## Project Stakeholders

- Northern Veterans Football Club
- Whitford Junior Football Club
- Whitford Amateur Football Club
- Whitford Hockey Club
- Whitford Junior Cricket Club
- Whitford Senior Cricket Club
- Sorrento Duncraig Junior Football Club
- Sorrento Duncraig Junior Cricket Club
- Sorrento Duncraig Senior Cricket Club