



Digital Mapping Solutions does not warrant the accuracy of information in this publication and any person using or relying upon such information does so on the basis that DMS shall bear no responsibility or liability whatsoever for any errors, faults, defects or omissions in the information.

BRAMSTON PARK

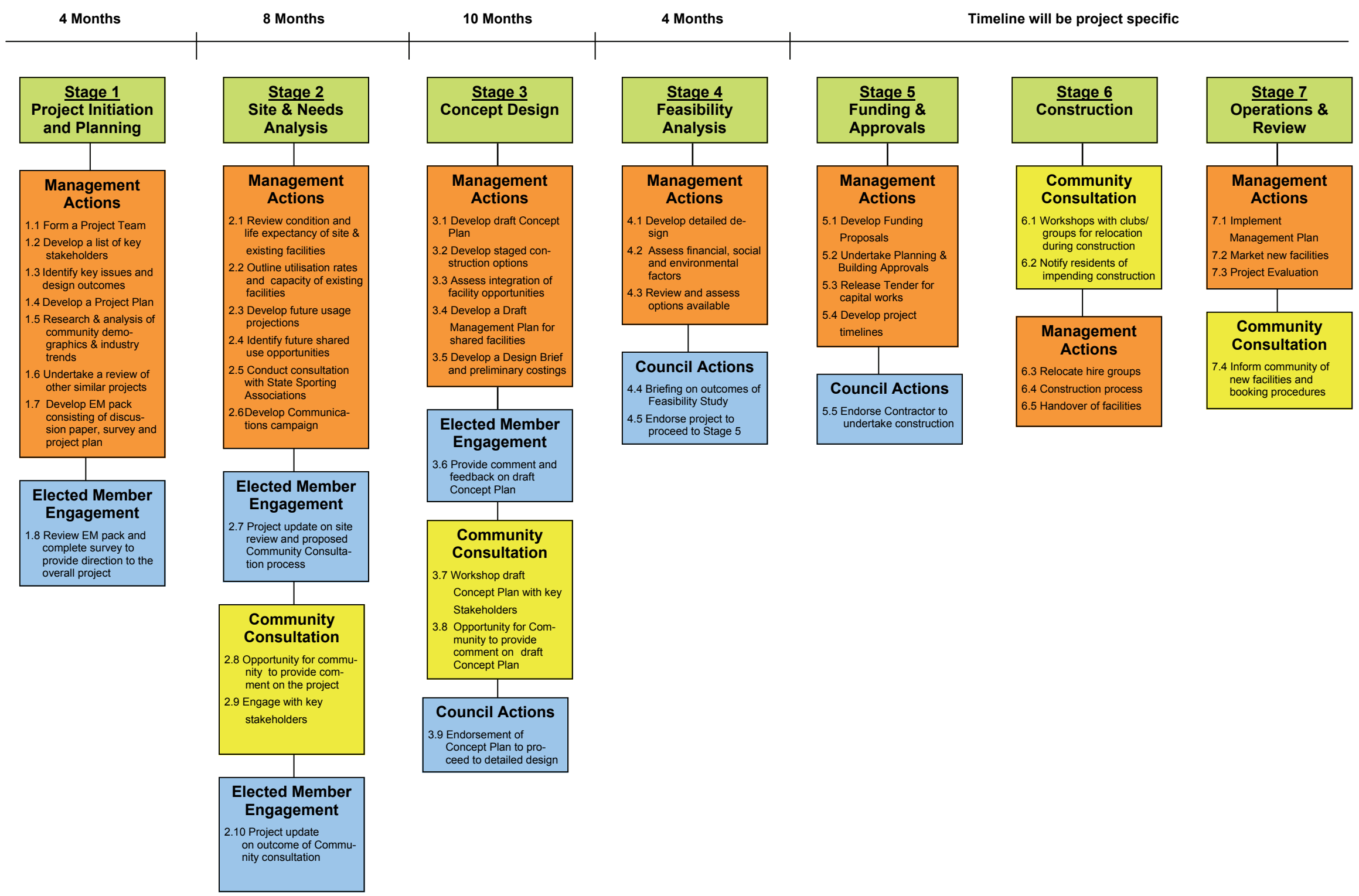
Thursday, 7 June 2012

1:1683





Master Planning Process



ANALYSIS OF 'BRAMSTON PARK, BURNS BEACH PROPOSED COMMUNITY SPORTING FACILITY' COMMENT FORM

The following provides an analysis of the quantitative and qualitative data gathered from the *Bramston Park, Burns Beach Proposed Community Sporting Facility* Comment Form.

RESPONSE RATES

The City directly consulted with the following stakeholders:

- Residents living within a 200 metres radius from the site
- Representatives from potential oval user groups
- Representatives from potential facility user groups
- Representative(s) from the local Resident's Association

The City collected a total of 121 valid responses through online and hardcopy collection methods; these are summarised in Tables 1 and 2 and Chart 1 below. (N.b. valid responses are those in which all contact details were provided.)

It should be noted that the City received 23 duplicate household responses with identical replies to all questions (a total of 109 valid responses per household). These have been counted as *separate respondents* in this analysis.

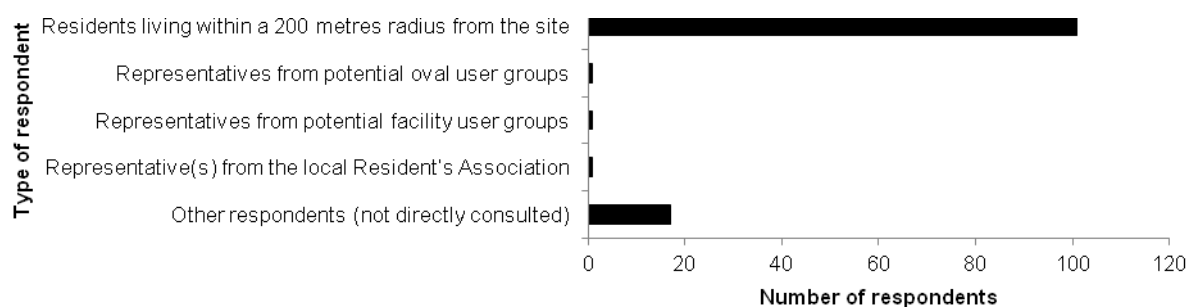
Table 1: Responses by collection method

Collection method	N	%
Hard-copy	86	71.1%
Online	35	28.9%
total (valid) responses	121	100.0%

Table 2: Responses by type of respondent

Type of respondent	Sent N	Received N	Response Rate %
Residents living within a 200 metres radius from the site	256	101	39.4%
Representatives from potential oval user groups	2	1	50.0%
Representatives from potential facility user groups	13	1	7.7%
Representative(s) from the local Resident's Association	1	1	100%
Other respondents (not directly consulted)	N/A	17	N/A
total (valid) responses	272	121	N/A

Chart 1: Responses by type of respondent



DEMOGRAPHICS

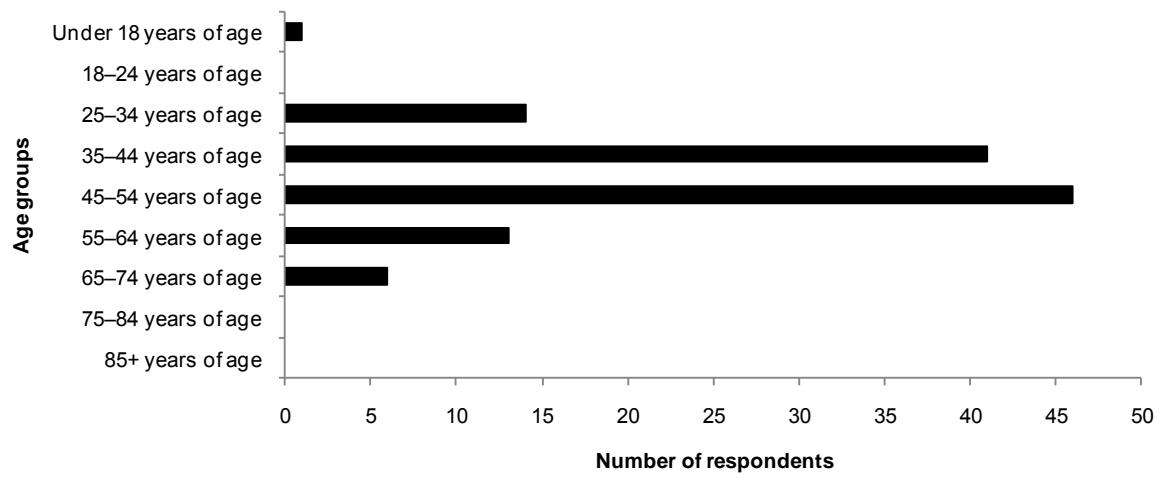
Of the 121 valid responses collected, over a third of these were completed by people aged between 35 and 44 and over a third were completed by people aged between 45 and 54 years of age. These are the largest age segments of the population for the Iluka–Burns Beach suburb areas, so we would expect more responses from these age groups; however, it should be noted that these groups are still somewhat over-represented in the responses. These data is summarised in Table 3 and Chart 2 below.

Table 3: Responses by age

Age groups	Demographics	Responses	
	% ¹	N	%
Under 18 years of age	29.7%	1	0.8%
18–24 years of age	10.6%	0	0.0%
25–34 years of age	6.3%	14	11.6%
35–44 years of age	17.4%	41	33.9%
45–54 years of age	21.0%	46	38.0%
55–64 years of age	9.4%	13	10.7%
65–74 years of age	3.9%	6	5.0%
75–84 years of age	1.6%	0	0.0%
85+ years of age	0.2%	0	0.0%
total (valid) responses	100.0%	121	100.0%

Chart 2: Responses by age

¹ Demographics represent the joint proportions for the suburbs of Burns Beach and Iluka (Source: Australian Bureau of Statistics 2011, *Census of Population and Housing*)



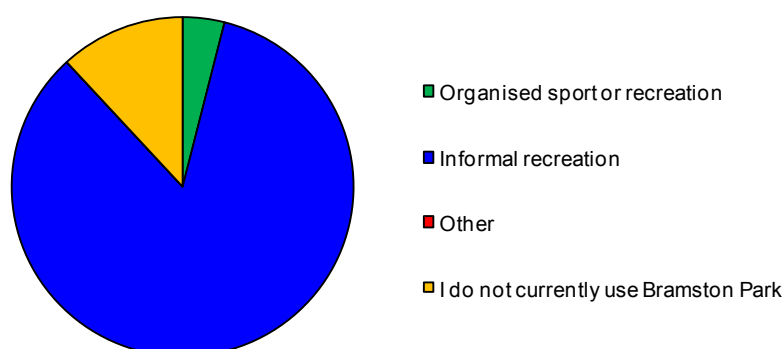
QUESTION 1: 'HOW DO YOU CURRENTLY USE BRAMSTON PARK?'

A total of 121 respondents provided a valid response to this question. Of the responses collected, the majority use Bramston Park for informal sport or recreation. Of the respondents who provided an 'Other' response, the explanations provided fitted within one or more of the categories provided and the results were adjusted accordingly. These data are summarised in Table 4 and Chart 3 below. (N.b. the percentage of total responses can be greater than 100% as respondents were permitted to select more than one response.)

Table 4: Types of responses to 'How do you currently use Bramston Park?'

Type of park usage	Responses	
	N	%
Residents living within a 200 m radius from the site		
Organised sport or recreation	4	4.0%
Informal recreation	90	89.1%
Other	0	0.0%
I do not currently use Bramston Park	11	10.9%
total (valid) responses	101	104.0%
Other respondents		
Organised sport or recreation	1	5.0%
Informal recreation	16	80.0%
Other	0	0.0%
I do not currently use Bramston Park	4	20.0%
total (valid) responses	20	100.0%
Total respondents		
Organised sport or recreation	5	4.1%
Informal recreation	106	87.6%
Other	0	0.0%
I do not currently use Bramston Park	15	12.4%
total (valid) responses	121	104.1%

Chart 3: Types of responses to 'How do you currently use Bramston Park?' (total respondents)



QUESTION 3: THE FOLLOWING NEW INFRASTRUCTURE IS PROPOSED AS PART OF THE PROJECT. DO YOU SUPPORT THE FOLLOWING BEING CONSTRUCTED/INSTALLED AT BRAMSTON PARK?

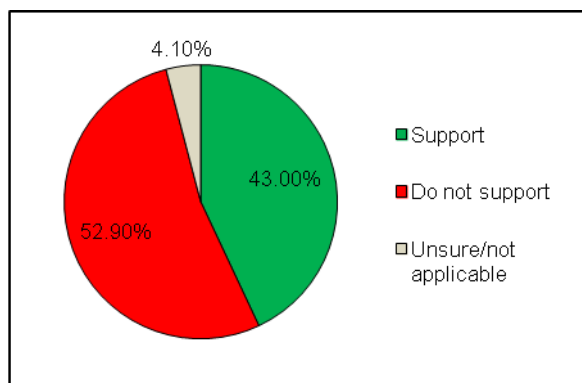
A total of 121 survey respondents provided a valid response to this question. Of the responses collected, approximately half did not support the construction of a multi-purpose community sporting facility at Bramston Park. Similarly, approximately half did not support the installation of floodlighting. The construction of a car park was split almost equally between support/opposition. There was however, strong support for the construction of a playground at Bramston Park. These data are summarised in Table 5 and Charts 4–7 below.

Table 5: Types of responses to ‘The following new infrastructure is proposed as part of the project. Do you support the following being constructed/installed at Bramston Park?’

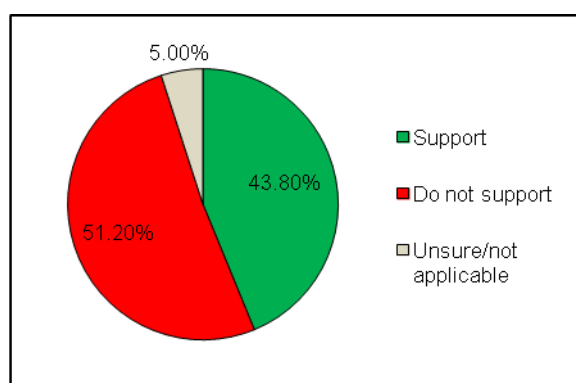
Type of park infrastructure	Support		Do not support		Unsure/not applicable		total (valid) responses	
	N	%	N	%	N	%	N	%
Residents living within a 200 m radius from the site								
Multi-purpose community sporting facility	40	39.6%	56	55.4%	5	5.0%	101	100.0%
Floodlighting	43	42.6%	53	52.5%	5	5.0%	101	100.0%
Car parking	45	44.6%	50	49.5%	6	5.9%	101	100.0%
Playground	74	73.3%	20	19.8%	7	6.9%	101	100.0%
Other respondents								
Multi-purpose community sporting facility	12	60.0%	8	40.0%	0	0.0%	20	100.0%
Floodlighting	10	50.0%	9	45.0%	1	5.0%	20	100.0%
Car parking	11	55.0%	8	40.0%	1	5.0%	20	100.0%
Playground	11	55.0%	7	35.0%	2	10.0%	20	100.0%
Total respondents								
Multi-purpose community sporting facility	52	43.0%	64	52.9%	5	4.1%	121	100.0%
Floodlighting	53	43.8%	62	51.2%	6	5.0%	121	100.0%
Car parking	56	46.3%	58	47.9%	7	5.8%	121	100.0%
Playground	85	70.2%	27	22.3%	9	7.4%	121	100.0%

Charts 4–7: Types of responses to ‘The following new infrastructure is proposed as part of the project. Do you support the following being constructed/installed at Bramston Park?’ (total respondents)

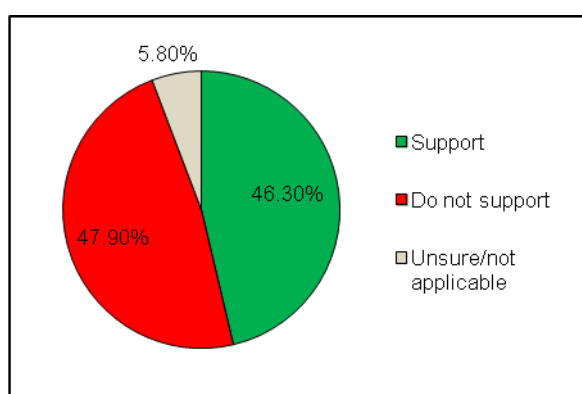
Multi-purpose community sporting facility:



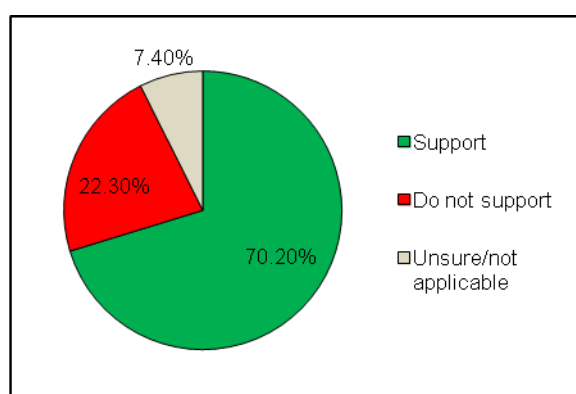
Floodlighting:



Car parking:



Playground:



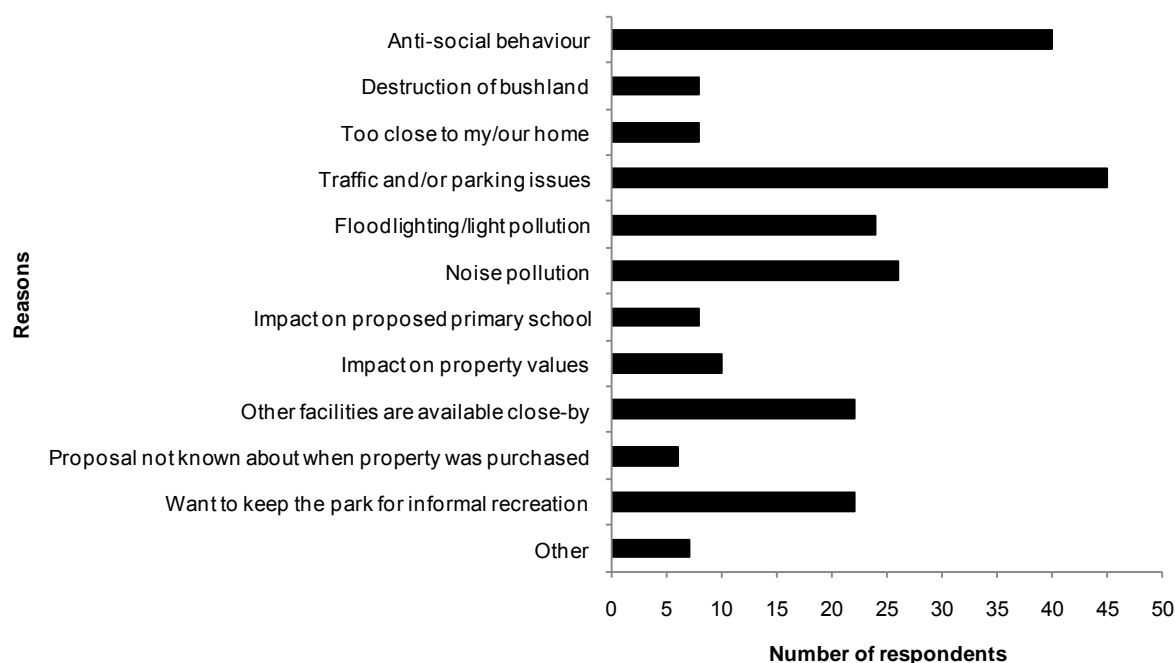
It should be noted that while some respondents supported the construction/installation of all of the proposed infrastructure elements, they commented that that the facility would need to be well-managed and maintained, particularly in relation to anti-social behaviour, car parking and traffic. Other supportive respondents also commented that they would like the City to ensure that Bramston Park was still accessible to residents wanting to partake in informal recreation (especially dog-walking).

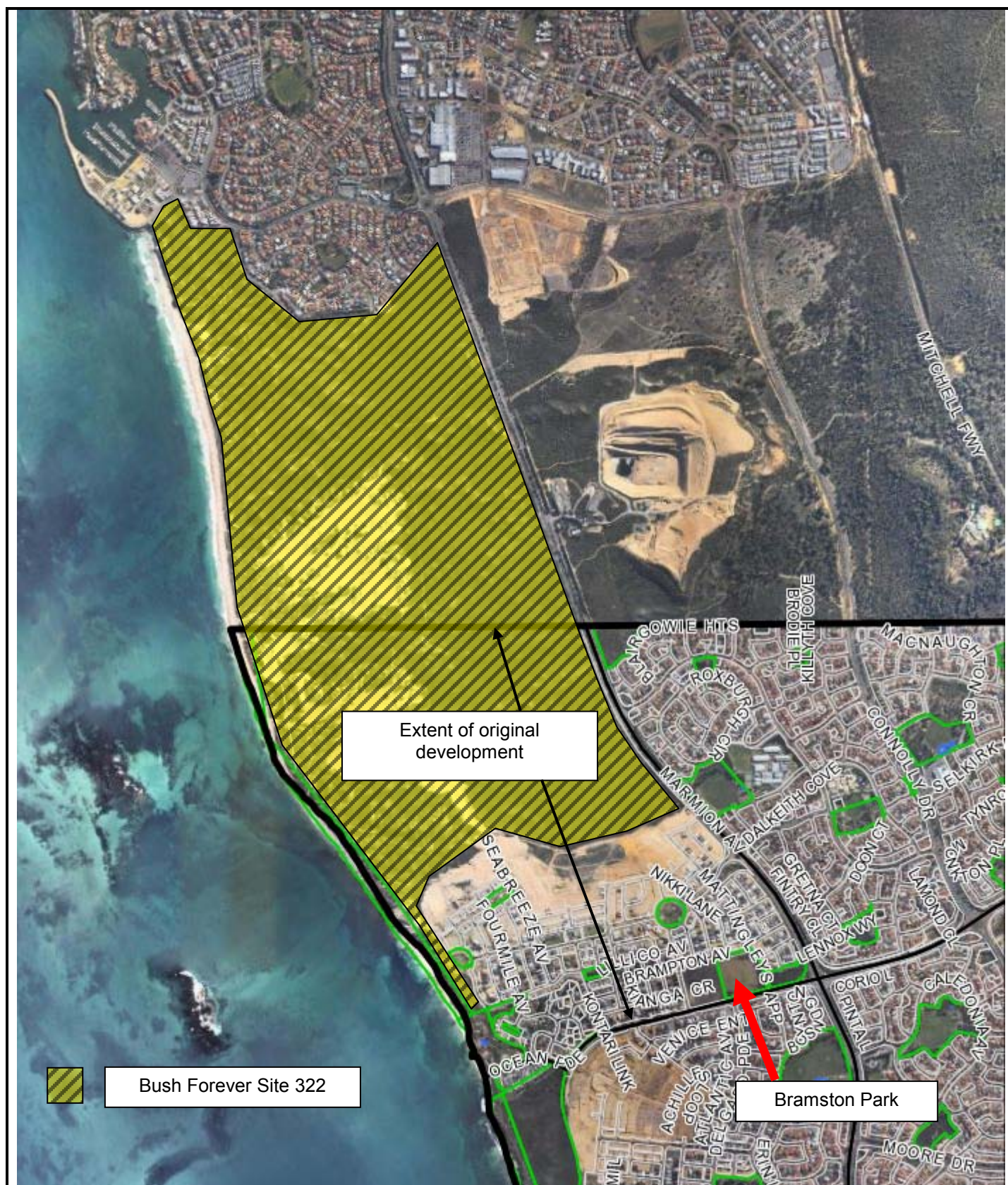
Respondents were asked, if they did not support the construction/installation of the proposed infrastructure, to outline their reasons why. Approximately 60% of respondents opposed at least one element of the proposal. The major reasons for opposition were concerns about traffic and parking and concerns about anti-social behaviour (such as loitering, graffiti, littering, alcohol-related issues, etc.). These responses are summarised in Table 8 and Chart 8 below.

Table 8: Summary of reasons for opposing the construction/installation of the proposed infrastructure.

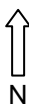
Reasons	Responses		
	N	% (opposed)	% (total)
Anti-social behaviour	40	58.0%	35.7%
Destruction of bushland	8	11.6%	7.1%
Too close to my/our home	8	11.6%	7.1%
Traffic and/or parking issues	45	65.2%	40.2%
Floodlighting/light pollution	24	34.8%	21.4%
Noise pollution	26	37.7%	23.2%
Impact on proposed primary school	8	11.6%	7.1%
Impact on property values	10	14.5%	8.9%
Other facilities are available close-by	22	31.9%	19.6%
Not known when property was purchased	6	8.7%	5.4%
Want to keep the park for informal recreation	22	31.9%	19.6%
Other	7	10.1%	6.3%
total (valid) responses opposed	69	100.0%	61.6%
total (valid) responses	112	N/A	100.0%

Chart 8: Summary of reasons for opposing the construction/installation of the proposed infrastructure.





90 Boas Ave, Joondalup WA 6027
 PO Box 21, Joondalup WA 6919
 Ph: 08 9400 4000
 Fax: 08 9300 1383
 info@joondalup.wa.gov.au
 www.joondalup.wa.gov.au



Scale(A4):1:25000

Date: 20 November 2012

DISCLAIMER: While every care is taken to ensure the accuracy of this data, the City of Joondalup makes no representations or warranties about its accuracy, completeness or suitability for any particular purpose and disclaims all liability for all expenses, losses, damages and costs which you might incur as a result of the data being inaccurate or incomplete in any way and for any reason.

BURNS BEACH ESTATE & BUSH FOREVER SITE 322