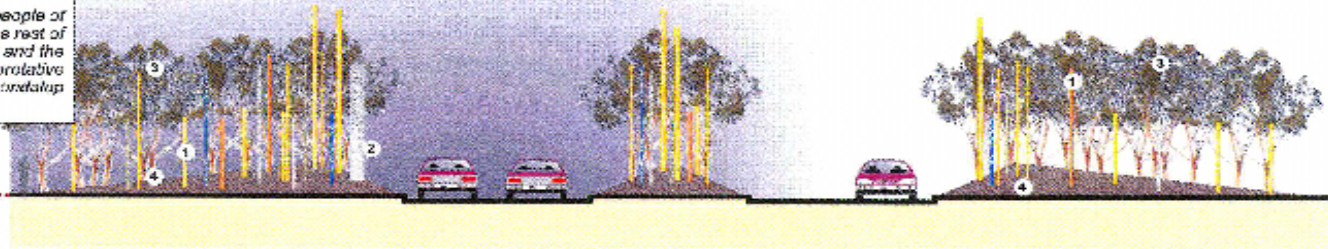


ORIGINAL DESIGN

CONCEPT

A memorable gateway into the City of Joondalup, with visitors and residents 'moving through' the design.

A clear Joondalup sign informs people of where they are entering while the rest of the design mimics a city skyline and the individual elements are an interpretative reflection of what is the City of Joondalup (past, present and future)



SECTION AA

① **CONSTANT ELEMENT ONE
POLES**

The staggered line of poles represent a city skyline. Furthermore, each pole reflects a specific concept through its colour (mats) and motif. The reflective stick on the top of poles of each pole will glow at night from road lighting. The number of such urban will vary depending on location.

② **CONSTANT ELEMENT TWO
IDENTICAL SIGN**

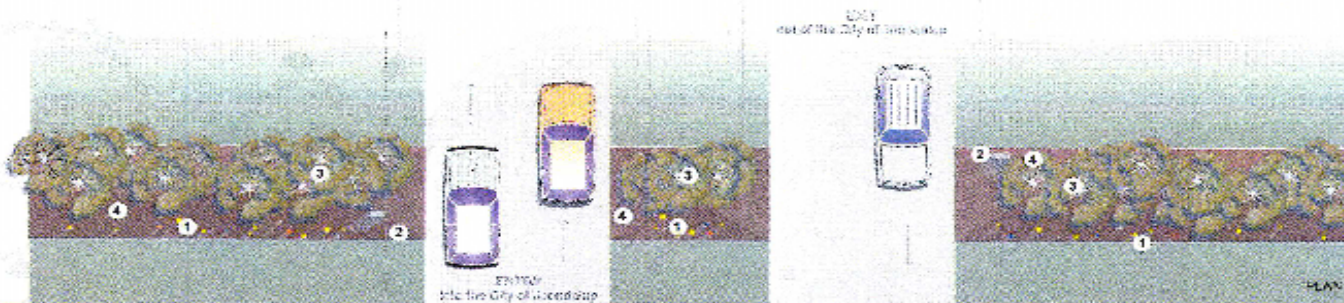
A constant element in each location, it clearly states where a person is. Constructed from finished wood with the assistance from a reflective material that is slightly angled light. (Size: 1 x 0.6m wide / the exit sign is half width of 0.6m x 0.3m wide).

③ **CONSTANT ELEMENT THREE
TREES**

A species suited to each location will be chosen and grown in the bed behind the gateway entrance behind the poles. Dim concentrated up lighting will create a night time spectacle.

④ **CONSTANT ELEMENT FOUR
GROUND TREATMENT**

A clear ground treatment of gravel will ensure all users are on the gateway of poles and trees. This clear subdivision will increase visibility. The lined ground plane creates a crestsicle to the gateway for vehicle to move through.

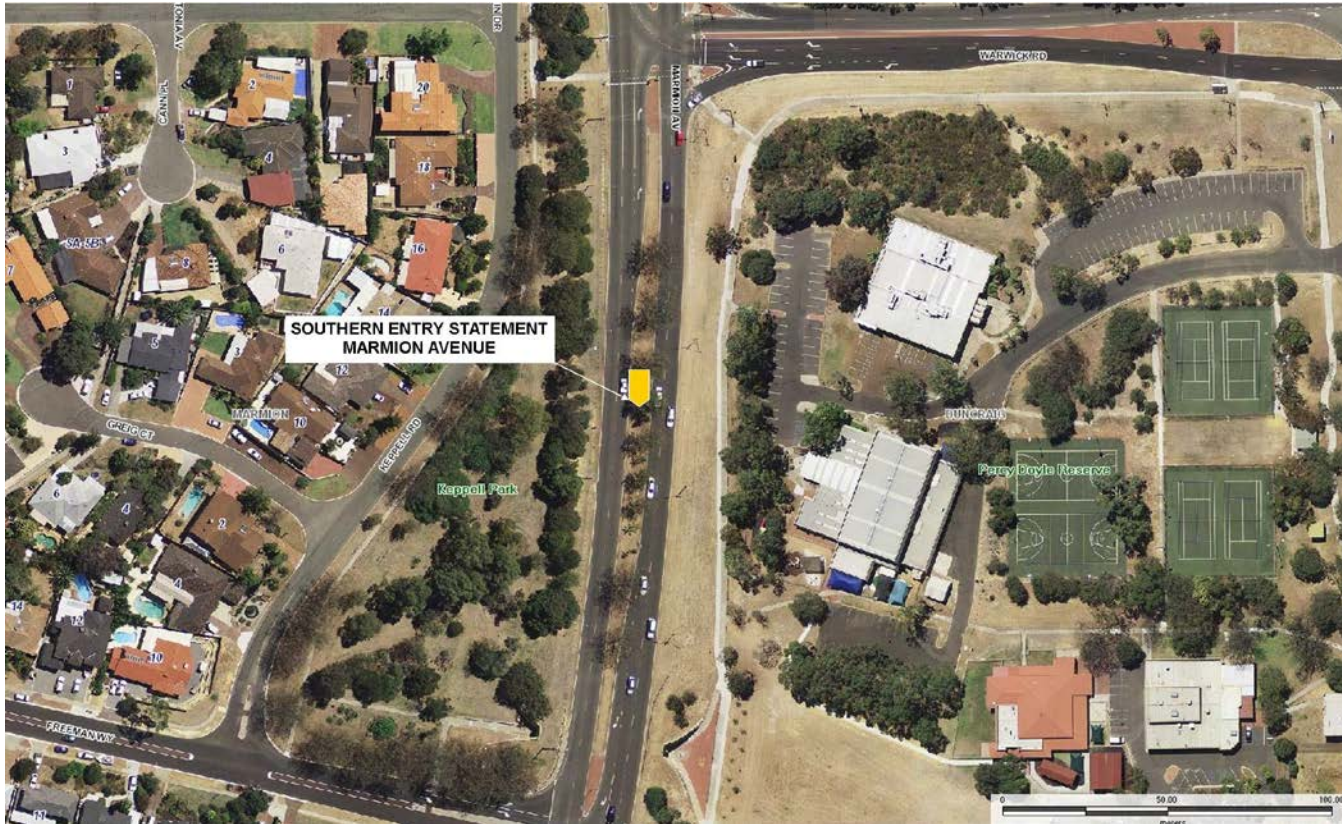


**JOONDALUP ENTRY STATEMENTS
TYPICAL LOCATION**

Scale: 1:100 (with 1:1000 site plan)

Entry Statement Locations

- Southern Entry Statement



MARMION AVENUE (SOUTH)



MARMION AVENUE (NORTH)

