

**District Planning Scheme No.2  
Amendment No. 78**

**LEGEND** SCALE 1: 2500

Boundary of Amendment  
Zone Area

**METROPOLITAN REGION SCHEME RESERVES**  
 Public Purpose

**ZONES**  
 Residential  
 Commercial  
 Restricted Use : 2-8 "Aged or Dependent Persons' Dwelling"



Prepared by City of Joondalup : 16062014 -djt

**Residential Density Codes  
District Planning Scheme No.2  
Amendment No. 77**

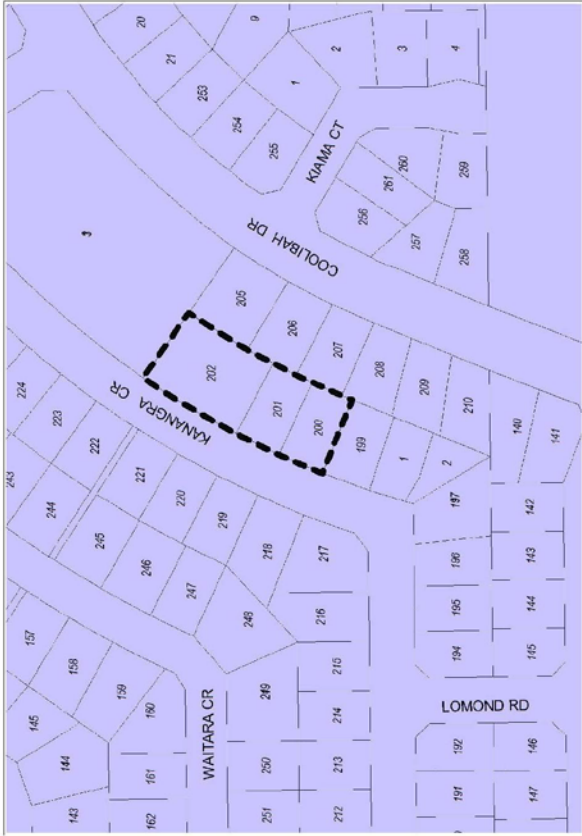
**LEGEND** SCALE 1: 2000

 Boundary of Amendment  
Zone Area

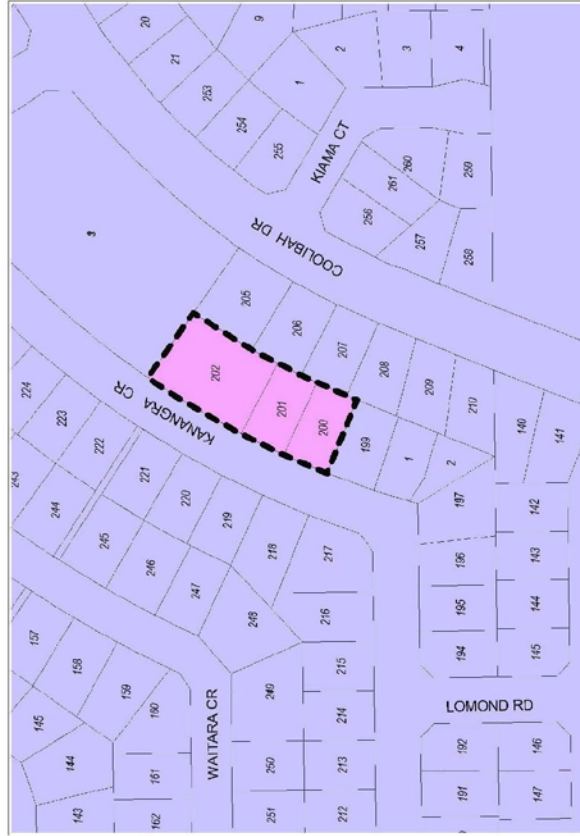
**RCODES**

 R 20

 R 40

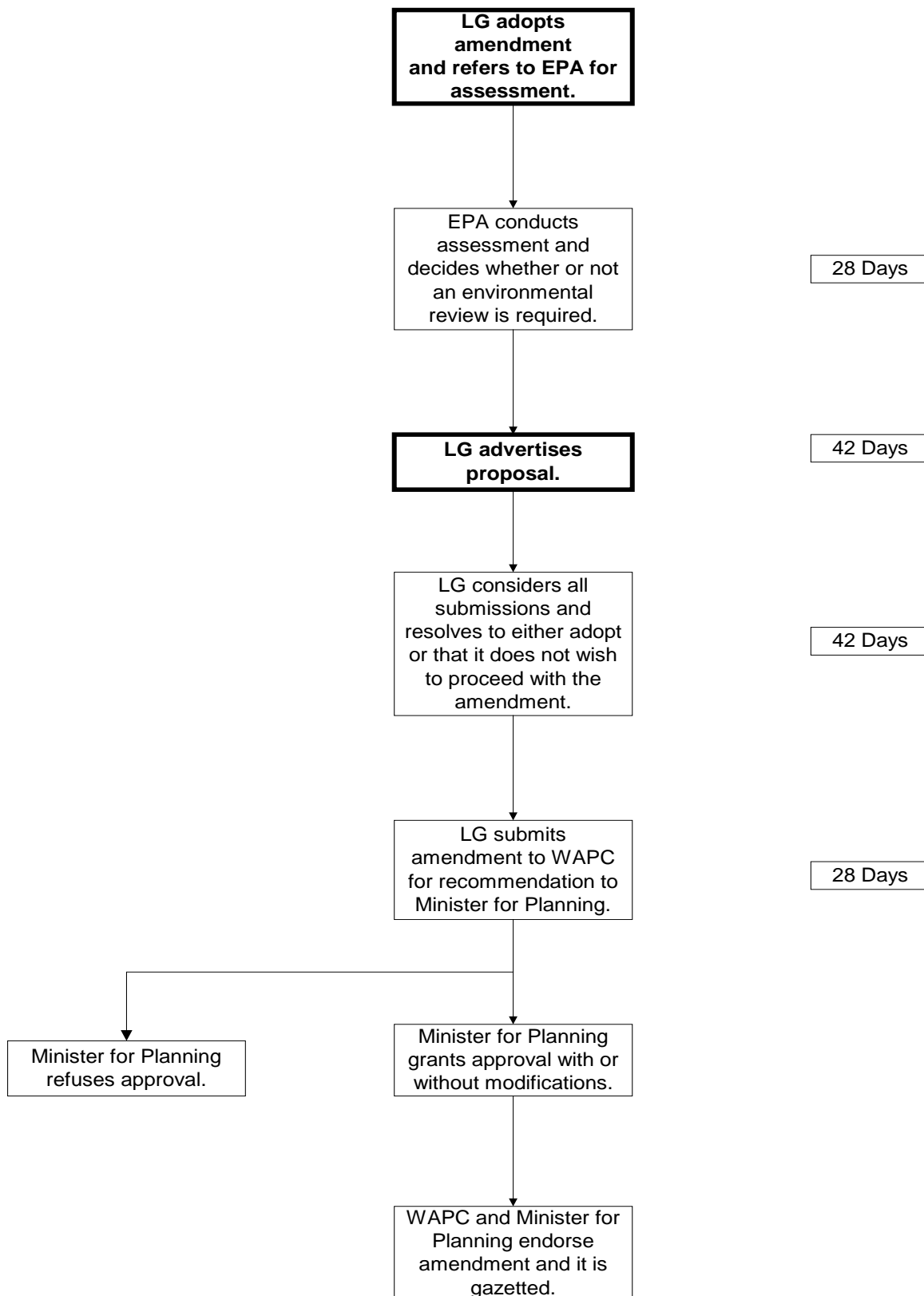


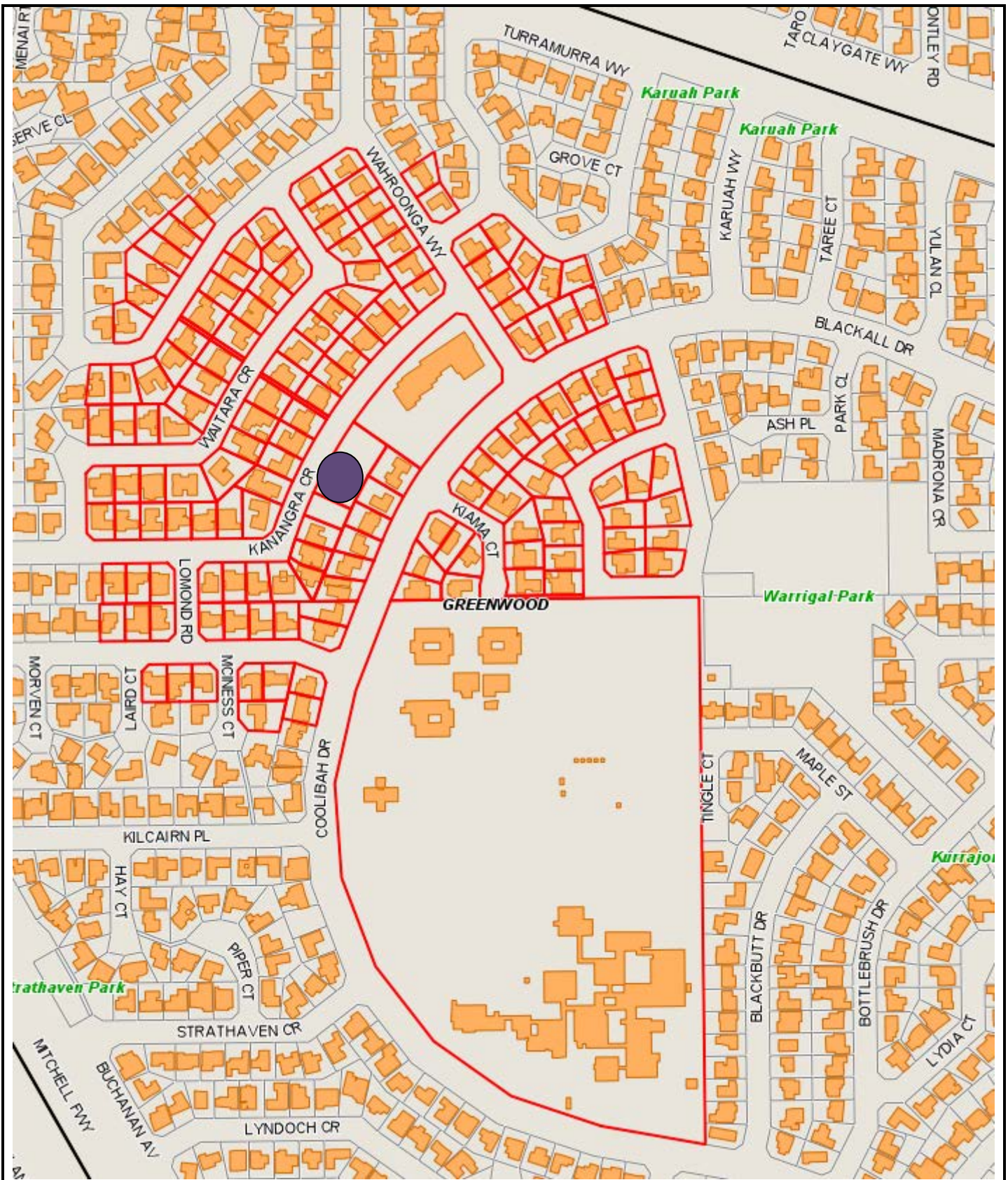
EXISTING ZONING



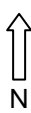
SCHEME AMENDMENT

**Scheme Amendment Process**







**City of Joondalup**  
 90 Boas Ave, Joondalup WA 6027  
 PO Box 21, Joondalup WA 6919  
 Ph: 08 9400 4000  
 Fax: 08 9300 1383  
 info@joondalup.wa.gov.au  
 www.joondalup.wa.gov.au


 N  
 DISCLAIMER: While every care is taken to ensure the accuracy of this data, the City of Joondalup makes no representations or warranties about its accuracy, completeness or suitability for any particular purpose and disclaims all liability for all expenses, losses, damages and costs which you might incur as a result of the data being inaccurate or incomplete in any way and for any reason.

**Consultation Map**

-  Subject site
-  To be consulted