







**Residential Density Codes  
District Planning Scheme No.2  
Amendment No. 82**



**SCALE 1: 1500**

**LEGEND**



Boundary of Amendment

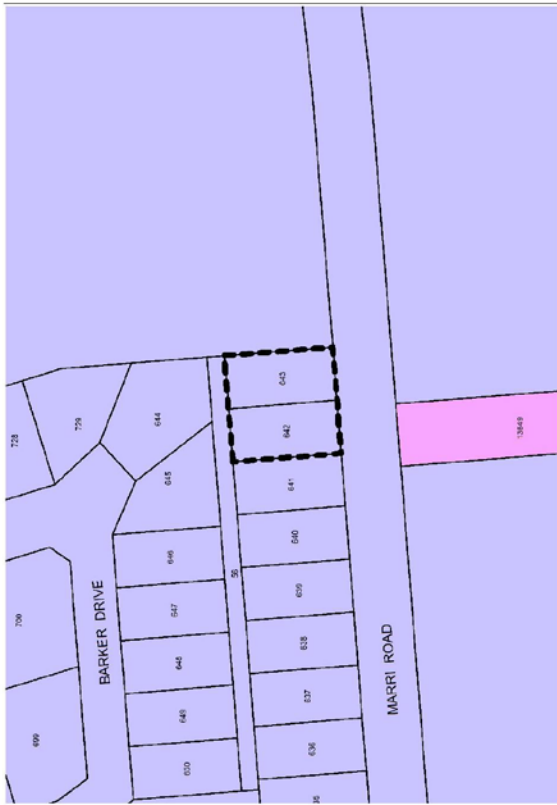
**RCODES**



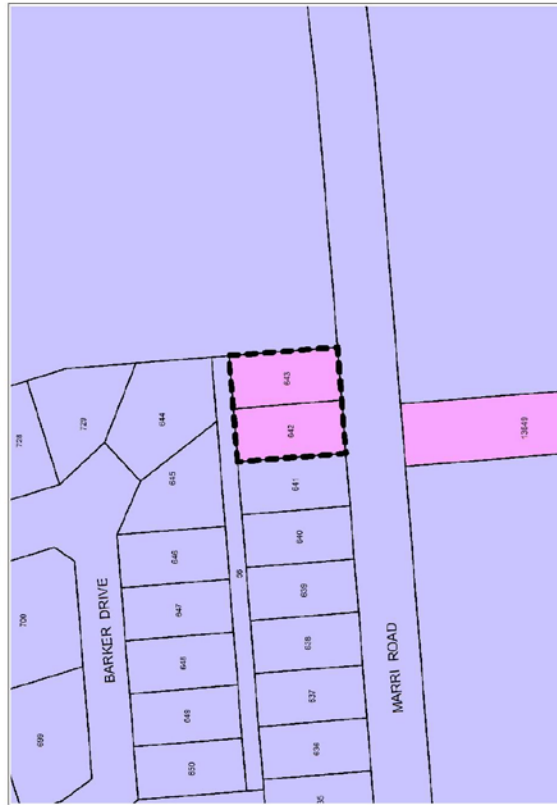
R 20



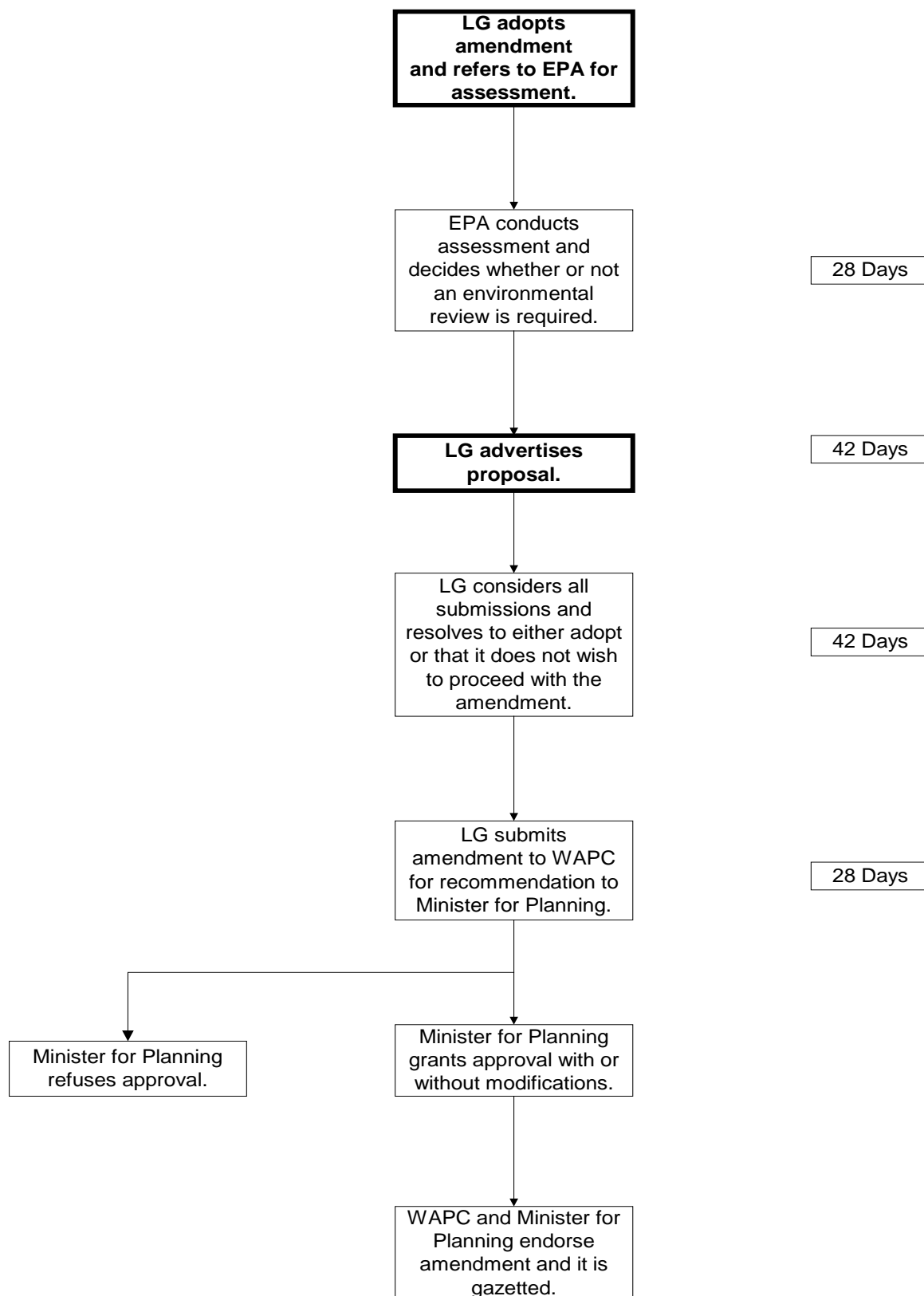
R 40

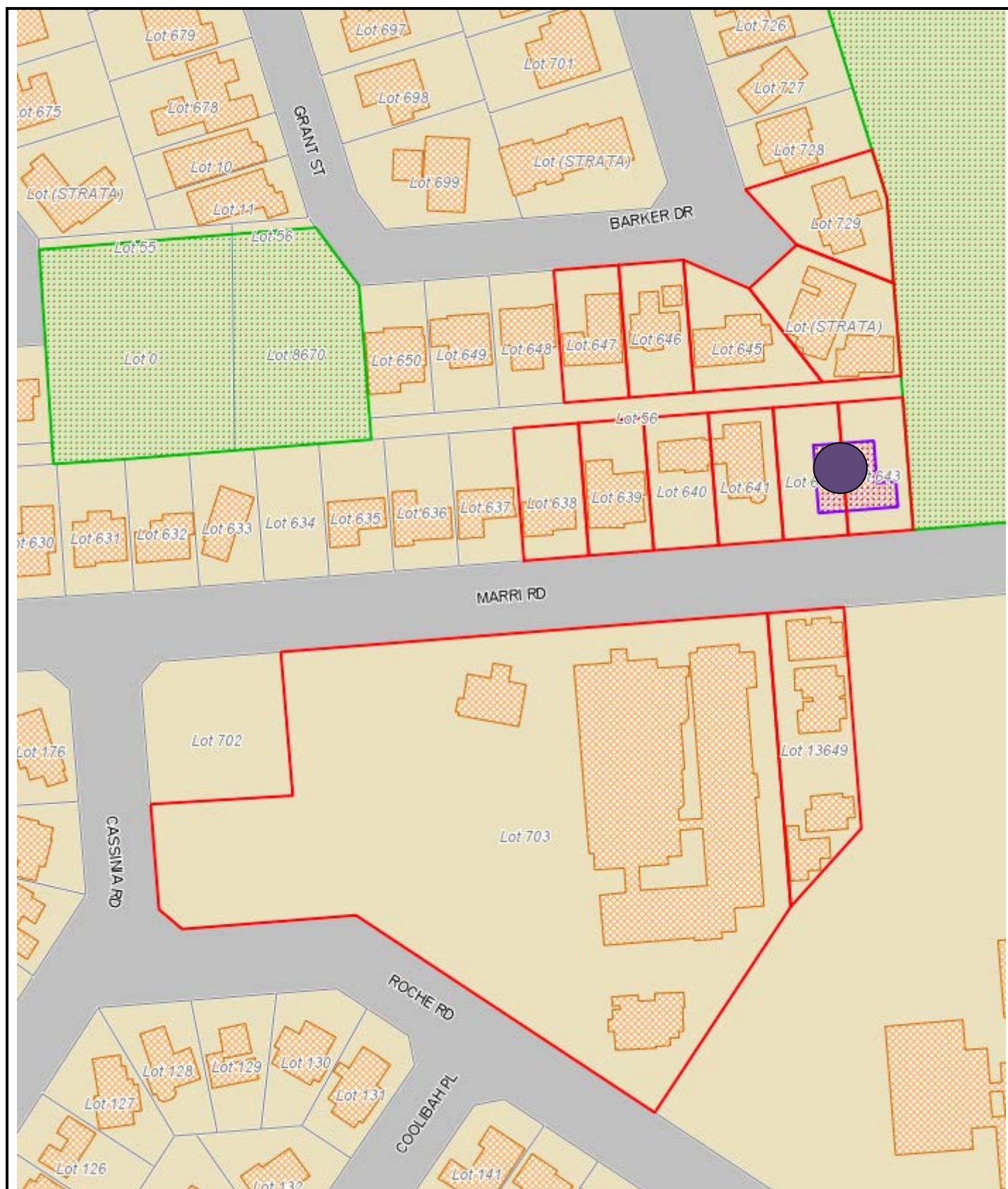


**EXISTING RESIDENTIAL DENSITY CODE**

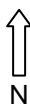


**SCHEME AMENDMENT**

**Scheme Amendment Process**



90 Boas Ave, Joondalup WA 6027  
 PO Box 21, Joondalup WA 6919  
 Ph: 08 9400 4000  
 Fax: 08 9300 1383  
 info@joondalup.wa.gov.au  
 www.joondalup.wa.gov.au



DISCLAIMER: While every care is taken to ensure the accuracy of this data, the City of Joondalup makes no representations or warranties about its accuracy, completeness or suitability for any particular purpose and disclaims all liability for all expenses, losses, damages and costs which you might incur as a result of the data being inaccurate or incomplete in any way and for any reason.

### Consultation Map

 Subject site

 To be consulted