

# Annual Plan

## 2015 – 2016 Progress Report



OCTOBER TO DECEMBER 2015

## Table of Contents

|   |           |
|---|-----------|
| Introduction.....   | 4         |
| <b>GOVERNANCE AND LEADERSHIP.....</b>   | <b>7</b>  |
| Elected Member Attraction .....   | 7         |
| Coordination of Elections .....   | 7         |
| Elected Member Induction Program .....  | 7         |
| Elected Member Strategic Development Session .....  | 7         |
| Community Consultation .....  | 7         |
| Strategic Community Reference Group (SCRG).....   | 7         |
| Publications .....  | 8         |
| Annual Report .....   | 8         |
| Compliance Audit Return .....   | 8         |
| Integrated Planning and Reporting Framework (IPRF) .....                                    | 9         |
| Customer Satisfaction Survey .....  | 9         |
| Policy Development and Review .....   | 9         |
| Local Laws – Development and Review.....  | 10        |
| Delegated Authority Manual .....  | 11        |
| Online Applications.....  | 11        |
| Electronic Communication.....   | 11        |
| Strategic Position Statements .....   | 12        |
| External Partnerships .....   | 13        |
| Submissions to State and Federal Government.....  | 14        |
| Jinan Sister City Relationship.....   | 14        |
| <b>FINANCIAL SUSTAINABILITY .....</b>   | <b>15</b> |
| City Freehold Property Disposals .....  | 15        |
| Building Certification.....   | 15        |
| Property Management Framework .....   | 15        |
| 20 Year Strategic Financial Plan .....  | 16        |
| Parks and Public Open Spaces Classification Framework.....                                  | 16        |
| Capital Works Program .....   | 17        |
| Dualling of Whitfords Avenue, Kallaroo .....  | 17        |
| Dualling of Ocean Reef Road, Ocean Reef.....  | 17        |
| Ocean Reef Road and Joondalup Drive Intersection Upgrade.....                               | 18        |
| Marmion Foreshore Parking .....   | 18        |
| State and Federal Funding of Infrastructure Projects .....                                  | 18        |
| <b>QUALITY URBAN ENVIRONMENT .....</b>  | <b>19</b> |
| Local Planning Scheme No 3 .....  | 19        |
| Local Planning Policies Review to support Local Planning Scheme No 3.....                   | 19        |
| Local Housing Strategy Implementation - Scheme Amendment and Policy Review/Development..... | 19        |
| Burns Beach Master Plan.....  | 20        |
| Integrated Transport Management Plan.....   | 20        |
| Bike Plan 2015-2020 .....   | 20        |
| Walkability Plan 2013-2018.....   | 21        |
| Joondalup City Centre Street Lighting.....  | 21        |
| Priority Two Entry Statements (Arterial Roads Program) .....                                | 21        |
| Joondalup Activity Centre Structure Plan and Transport Study Stage Two .....                | 22        |
| Joondalup City Centre Development.....  | 22        |
| Joondalup Performing Arts and Cultural Facility .....                                       | 23        |
| <b>ECONOMIC PROSPERITY, VIBRANCY AND GROWTH.....</b>  | <b>25</b> |
| Developing Business Clusters – Innovation Precinct .....                                    | 25        |
| Investment Attraction.....  | 25        |
| Multi-Storey Car Park in Joondalup City Centre.....   | 25        |
| Tourism Promotion .....   | 25        |
| Significant Event Attraction .....  | 26        |
| Ocean Reef Marina – Business Case and Structure Plan.....                                   | 26        |
| Establishment of Cafés, Kiosks and Restaurants.....   | 27        |

|   |    |
|---|----|
| Regional Economic Development .....   | 28 |
| Economic Development Strategy .....   | 28 |
| Digital Strategy .....  | 29 |
| Business Engagement and Communication.....  | 29 |
| Business Growth and Innovation – sixty27.....   | 30 |
| Business Growth and Innovation – Edith Cowan University Business Innovation Centre (ECUBIC) ..... | 30 |
| <b>THE NATURAL ENVIRONMENT</b> .....  | 31 |
| Environment Plan 2014-2019.....   | 31 |
| Yellagonga Integrated Catchment Management (YICM) Plan 2015-2019 .....                            | 31 |
| Climate Change Strategy Implementation.....   | 32 |
| Coastal Adaptation Planning and Implementation Project.....                                       | 32 |
| Weed Management Plan.....   | 32 |
| Pathogen Management Plan.....   | 33 |
| Bushland Fire Management Plan .....   | 33 |
| Whitfords Nodes Foreshore Bushland Management Plan.....   | 33 |
| Sorrento Foreshore Bushland Reserve Management Plan.....  | 34 |
| Shepherd's Bush Natural Area Management Plan.....   | 34 |
| Landscape Master Plan 2009-2019 Eco-Zoning and Hydro-Zoning in Parks.....                         | 34 |
| Think Green Program.....  | 34 |
| Waste Management Plan 2015-2020.....  | 35 |
| Bulk Refuse Collection .....  | 35 |
| Adopt a Coastline Project.....  | 35 |
| Friends' Group Activities .....   | 36 |
| Beach Management Plan.....  | 36 |
| City Water Plan .....   | 37 |
| <b>COMMUNITY WELLBEING</b> .....  | 38 |
| Warwick Community Centre Master Plan.....   | 38 |
| Edgewater Quarry Master Planning Project.....   | 38 |
| HBF Arena Joondalup Redevelopment.....  | 38 |
| Warwick Stadium Expansion.....  | 38 |
| Upgrade of Community Facilities, Timberlane Clubrooms, Woodvale .....                             | 38 |
| Bramston Park, Burns Beach .....  | 39 |
| Warwick Open Space Hockey Infrastructure Project.....   | 39 |
| Penistone Reserve Redevelopment Penistone Park, Greenwood .....                                   | 39 |
| Undercroft Bridge Room, Percy Doyle Reserve, Duncraig.....  | 39 |
| Mullaloo Surf Life Saving Club .....  | 40 |
| Joondalup Men's Shed.....   | 40 |
| Public Art.....   | 40 |
| Arts Development Scheme.....  | 40 |
| Arts in Focus .....   | 40 |
| Community Funding Program .....   | 41 |
| Cultural Program .....  | 41 |
| Community Based Events .....  | 41 |
| Civic Ceremonies .....  | 42 |
| Community Development Plan.....   | 43 |
| Community Safety and Crime Prevention Plan (CSCPP) .....  | 43 |
| Ranger and Community Patrol Service .....   | 43 |
| Road Safety Action Plan .....   | 44 |

INTRODUCTION

The City's Planning Framework is structured to ensure operational activities are driven and delivered in alignment with the City's strategic priorities. The Strategic Community Plan 2012-2022 is a key component of this planning framework and is the overarching Plan that provides direction for all activities. The Plan guides the development and provision of the City's services and programs through its key themes of:

- Governance and Leadership.
- Financial Sustainability
- Quality Urban Environment
- Economic Prosperity, Vibrancy and Growth
- The Natural Environment
- Community Wellbeing

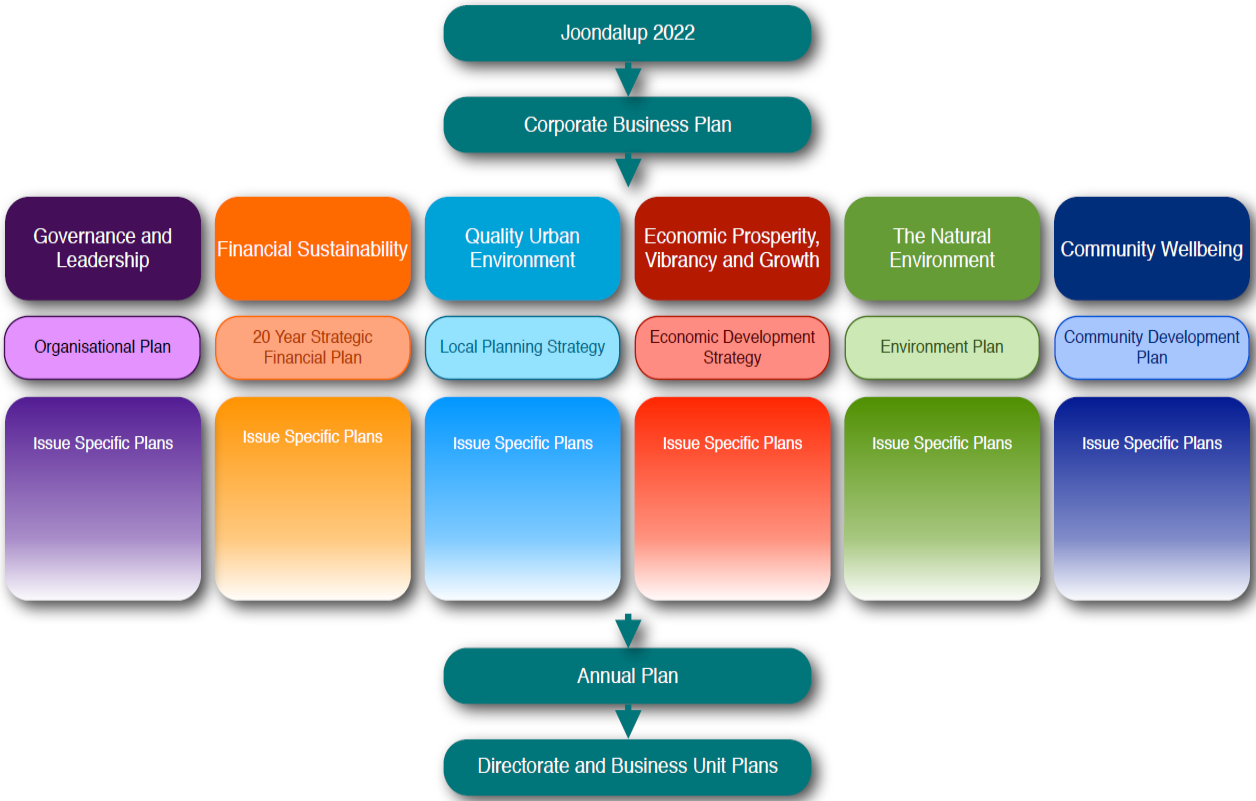
The City's current Planning Framework is made up of a series of Plans to implement the City's Vision to be a *global city: bold, creative and prosperous*. The Framework includes:

- The 20-Year Strategic Financial Plan – which provides a broad overview of the major projects, programs and resource requirements and includes 20-year financial projections;
- The 10-Year Strategic Community Plan – which provides the broad future strategic direction for the City;
- The 5-Year Corporate Business Plan – which provides a detailed delivery program for City activities;
- The Organisational Plan – which sets out the strategies and actions to develop internal systems and organisational capacity in order to achieve the commitments set out in the Strategic Community Plan;
- The Annual Plan – which contains annual actions to achieve the vision of the Strategic Community Plan;
- Directorate Plans – which contain details of annual projects and programs to be delivered by each Directorate;
- Business Unit Action Plans – which contain details of the annual programs, services and activities for each Business Unit, and
- The Annual Budget.

The City's Planning Framework is in alignment with the Integrated Planning and Reporting requirements of the Department of Local Government and Communities.

Quarterly progress reports against the Annual Plan will provide Council and the community with a full assessment of the City's progress in relation to the achievement of pre-determined milestones for major projects and programs. Full progress reports against the Capital Works Program will be provided at the same time as Annual Plan Progress Reports to Council.

GARRY HUNT<sup>PSM</sup>  
Chief Executive Officer



## Quarter Highlights – October to December 2015

|  |   |
|--|---|
| Governance and Leadership                | <p><b>2015 Local Government Elections</b></p> <p>On 17 October 2015 the City of Joondalup held elections for six Councillor positions, resulting in Cr Tom McLean and Cr Mike Norman returning for another four year term, and four new Councillors elected for the first time. The new Councillors elected were Cr Nige Jones, Cr John Logan, Cr Russell Poliwka and Cr Sophie Dwyer. The City had a voter participation rate of 20.17%, which was lower than the State average of 27.5%.</p> <p><b>New Deputy Mayor</b></p> <p>At its meeting held on 20 October 2015 Council elected Cr Tom McLean as the new Deputy Mayor for the next twelve months. The role of the Deputy Mayor is to perform the functions of the Mayor when the Office of the Mayor is vacant or the Mayor is not available to perform the functions of the Mayor.</p> <p><b>2014-2015 Annual Report</b></p> <p>The City's 2014-2015 Annual Report was endorsed by Council on 23 November 2015. In accordance with Section 5.53 of the <i>Local Government Act 1995</i>, the Annual Report outlined the year's highlights and achievements, and incorporated Sustainability Reporting utilising the Global Reporting Initiative (GRI). The GRI is a best practice reporting framework that organisations can use to measure and report on their economic, environmental and social performance. The 2014-2015 Annual Report was received at the Annual General Meeting of Electors held on 15 December 2015.</p> |
| Financial Sustainability                 | <p><b>Capital Works Program</b></p> <p>A number of Capital Works Projects were completed in the quarter including:</p> <p>New or upgraded park equipment in:</p> <ul style="list-style-type: none"> <li>Whitfords Park East, Hillarys;</li> <li>Ridge Park, Edgewater; and</li> <li>Sorrento Foreshore, Sorrento.</li> </ul> <p>Traffic management treatments at the intersection of:</p> <ul style="list-style-type: none"> <li>Marmion Avenue and Shenton Avenue.</li> </ul> <p>Building works at:</p> <ul style="list-style-type: none"> <li>Ocean Reef Boat Harbour, Ocean Reef – floating jetties;</li> <li>Beaumaris Sports Association, Iluka – refurbishment; and</li> <li>Multi-storey car park, Joondalup.</li> </ul> <p>New or replaced paths around:</p> <ul style="list-style-type: none"> <li>Hilton Park – Duncraig.</li> </ul> <p>Road preservation and resurfacing along:</p> <ul style="list-style-type: none"> <li>Wanbrow Way, Duncraig;</li> <li>Strathyre Drive, Duncraig;</li> <li>Half Penny Lane, Iluka;</li> <li>Coolibah Drive, Greenwood;</li> <li>Marmion Avenue, Heathridge;</li> <li>Ocean Reef Road, Woodvale; and</li> <li>Cringle Street, Ocean Reef.</li> </ul>  |
| Economic Prosperity, Vibrancy and Growth | <p><b>Multi-storey Car Park</b></p> <p>Construction of the multi-story car park between Boas Avenue and Reid Promenade was completed and opened to the public during the quarter.</p> <p>The car park is one of the largest construction projects undertaken by the City. It provides over 500 bays and also includes provision for ACROD, motorcycle and bicycle bays.</p>   |
| The Natural Environment                  | <p><b>Think Green – Environmental Education Program</b></p> <p>As part of the City's Think Green Environmental Education Program a Yellagonga Bird Watching Walk and Talk was conducted on Sunday 25 October in Neil Hawkins Park, Joondalup, and neighbouring bushland. This tour provided the community with an opportunity to learn more about the diverse array of birdlife that inhabits Yellagonga Regional Park.</p> <p>Two Creatures of the Dark Nightstalks were also held in Neil Hawkins Park, Joondalup, on Thursday 1 October and Friday 6 November. 95 people across a broad range of ages attended the two events. The first tour coincided with school holidays and proved popular with young families.</p>   |
| Community Wellbeing                      | <p><b>Little Feet Festival</b></p> <p>The 2015 Little Feet Festival was held on Sunday 25 October at Edith Cowan University, Joondalup. The theme this year was <i>Once Upon a Time</i> and featured a range of family-friendly activities, events and entertainment. Popular activities included an imagination tent, an animal farm, an obstacle course, puppet shows, interactive workshops and outdoor music performances. The festival is the region's premier event for children under twelve and their families, and encourages an active and creative lifestyle for children. In excess of 7,000 people attended the event.</p> <p><b>Music in the Park</b></p> <p>The 2015-2016 Music in the Park Concert Series started with a concert held for the first time in Central Park, Joondalup, on Saturday 21 November. Over 2,500 people attended the concert that featured the <i>Ladies of Soul</i> who performed a number of classics made famous by Diana Ross and The Supremes, <i>Amy Winehouse</i>, <i>Chaka Kahn</i> and <i>Tina Turner</i>. The second concert, featuring <i>Tinpan Orange</i> and supported by <i>Ensemble Formidable</i>, was held at Penistone Park, Greenwood, on Saturday 12 December and also attracted over 2,500 people.</p>  |



Joondalup Twilight Markets

The 2015 Joondalup Twilight Markets were held over five weeks in Central Walk, Joondalup from 20 November to 18 December and showcased a wide range of stalls from food, fashion, arts, crafts, giftwares and homewares. Live entertainment and free children’s activities were also available during the Markets. Over 5,500 people attended the Markets and surrounding restaurants and bars.

Community Invitation Art Award

Works from WA professional artists were on display at the Community Invitation Art Award Exhibition which was held at Lakeside Joondalup Shopping City from 17 October to 31 October 2015. The award is open to WA professional artists who are residents of the City of Joondalup or members of the Joondalup Community Art Association.

Winners of the City of Joondalup 2015 Community Art Invitation Art Awards were:

- Acquisitive Award: Trevor Bly and Patrick Doherty for *It’s not a party without the devil*;
- Overall Runner Up Award: Tim Burns for *Pit Camp 1 After the Fire 5*;
- Award for Excellence: Nathen Beard for *Agnosia*;
- Celebrating Joondalup Award: Mike Gray for *Lakeside*; and
- Popular Choice Award: Denise Pepper for *Lace Collars*.

Community Funding Program

The Community Funding Program is a grant-based program that assists local community groups and schools with projects, events, and activities that develop and enhance the Joondalup community. Eligible organisations, schools, community groups and individuals are invited to apply for grants to support projects, activities and events which are relevant to the four category objectives.

Round two of the Community Funding Program was conducted during the quarter with the following applications being approved:

Community Development Fund

- Communified Inc - \$2,017;
- Autism Association of Western Australia - \$965;
- Kidzucate Inc - \$355;
- Cancer Patients Foundation and Look Good Feel Better - \$2,024;
- Northreach Community Church - \$2,245;
- Super Tuesday Over 50's Group - \$837;
- Padbury Catholic Primary School Parents and Friends Association - \$985;
- Nutrition Australia WA Division Inc. - \$1,070;
- Heathridge Primary School - \$180;
- Youth Futures WA - \$1,307;
- Edith Cowan University - \$1,104;
- Meerilinga Young Children's Services Inc - \$900;
- Fauna Rehabilitation Foundation - \$336; and
- Liwara Catholic Primary School - \$360.

Culture and the Arts Development Fund

- Indian Blue Chorus – \$2,000;
- South Padbury Primary School – \$3,492;
- Pastel Society of WA – \$554; and
- Prendiville Catholic College – \$4,000.

Sports and Recreation Development Fund

- 1st Joondalup Scout Group – \$2,000;
- Joondalup Little Athletics Centre – \$2,000;
- Joondalup Netball Association – \$2,650;
- C3 Church Hepburn Heights (Life Plus) – \$1,080; and
- Warwick Greenwood Football Club – \$1,318.

Environmental Development Fund

- Mullaloo Beach Primary School – \$748;
- Ngala Children’s Services – \$1,709;
- West Greenwood Primary School P&C – \$1,455;
- Friends of North Ocean Reef – Iluka Foreshore – \$5,000;
- Beldon Primary School – \$1,567;
- Joondalup Primary School and Joondalup Education Support Centre – \$2,076;
- The Montessori School – \$1,279; and
- St Simon Peter Catholic Primary School – \$1,703.

Legend to indicate status of the project:

| Project Status                  |  | Budget Status |   |
|---------------------------------|--|---------------|---|
| All Annual Milestones Completed |  | On Budget     | ✓ |
| On Track                        |  | Over Budget   | ↑ |
| Slightly Behind Schedule        |  | Under Budget  | ↓ |

## GOVERNANCE AND LEADERSHIP

|   | Project  | Milestone  | Target Quarter | Comments   | Project Status | Budget Status |
|---|--|--|----------------|--|----------------|---------------|
| <b>Objective:</b> To have a highly skilled and effective Council that represents the best interests of the community              | <b>Elected Member Attraction</b><br>Develop, implement and review a program to increase candidacy numbers at each Local Government Ordinary Election.  | <ul style="list-style-type: none"> <li>Promote candidate information sessions.</li> <li>Conduct candidate information sessions.</li> </ul>           | Jul – Sep 2015 | Candidate information sessions were promoted during the quarter via various outlets including the City's website and customer service centres.<br><br>Two candidate information sessions were held on 3 August and 17 August 2015.   |                |               |
|   |  | <ul style="list-style-type: none"> <li>Conduct candidate survey.</li> </ul>  | Oct – Dec 2015 | A candidate survey was conducted during the quarter and feedback was provided to the Western Australian Electoral Commission.  |                | ✓             |
|   | <b>Coordination of Elections</b><br>Coordinate Local Government Ordinary Elections in accordance with legislation.   | <ul style="list-style-type: none"> <li>Finalise non-resident Owners and Occupiers Roll.</li> </ul>   | Jul – Sep 2015 | The Owners and Occupiers Roll was finalised and submitted to the WA Electoral Commission during the quarter.   |                |               |
|   |  | <ul style="list-style-type: none"> <li>Conduct Swearing-in Ceremony</li> <li>Elect Deputy Mayor.</li> </ul>  | Oct – Dec 2015 | A Swearing-In Ceremony was held for six Councillor positions on 20 October 2015, and at a Special Meeting of Council, Cr Tom McLean was elected as the City's new Deputy Mayor.  |                | ✓             |
|   | <b>Elected Member Induction Program</b><br>Undertake an Elected Member Induction Program to introduce Elected Members to local government and provide information on their roles and responsibilities. | <ul style="list-style-type: none"> <li>Revise Elected Member Welcome Pack and Induction Manual.</li> <li>Develop Induction program.</li> </ul>       | Jul – Sep 2015 | The Elected Member Welcome Pack and Induction Manual were revised during the quarter. The development of the Induction program and scheduling was also completed.  |                |               |
|   |  | <ul style="list-style-type: none"> <li>Conduct Induction Program.</li> </ul>   | Oct – Dec 2015 | The Induction Program was conducted following the Local Government Elections.  |                | ✓             |
|   | <b>Elected Member Strategic Development Session</b><br>Conduct regular Elected Member Strategic Development Sessions to inform and guide leadership and strategic decision making.                     | <ul style="list-style-type: none"> <li>Conduct Strategic Session with Elected Members.</li> </ul>  | Jan – Mar 2015 |  |                |               |
|   |  |  |                |  |                |               |
| <b>Objective:</b> To have a community that actively engages with the City to achieve consensus and legitimacy in decision-making. | <b>Community Consultation</b><br>The City undertakes consultation on key matters affecting the City to encourage community participation in local government matters.                                  | <ul style="list-style-type: none"> <li>Conduct community consultation for individual projects and provide reports to Council as required.</li> </ul> | Jul – Sep 2015 | Community consultation was undertaken on the following projects during the quarter: <ul style="list-style-type: none"> <li>James Cook Park Landscape Master Plan Project;</li> <li>The draft Residential Development Local Planning Policy;</li> <li>The draft Height of Non-Residential Buildings Local Planning Policy; and</li> <li>Ellersdale Park – Proposed Upgrades Project.</li> </ul> |                |               |
|   |  | <ul style="list-style-type: none"> <li>Conduct community consultation for individual projects and provide reports to Council as required.</li> </ul> | Oct – Dec 2015 | Community consultation was undertaken on the following projects during the quarter: <ul style="list-style-type: none"> <li>The draft Waste Management Plan 2015-2020; and</li> <li>Oceanside Promenade – proposed upgrades.</li> </ul>   |                | ✓             |
|   |  | <ul style="list-style-type: none"> <li>Conduct community consultation for individual projects and provide reports to Council as required.</li> </ul> | Jan – Mar 2016 |  |                |               |
|   |  | <ul style="list-style-type: none"> <li>Conduct community consultation for individual projects and provide reports to Council as required.</li> </ul> | Apr – Jun 2016 |  |                |               |
|   | <b>Strategic Community Reference Group (SCRG)</b><br>Manage a Strategic Community Reference Group of interested community residents  | <ul style="list-style-type: none"> <li>Develop 2015-2016 work plan.</li> </ul>   | Jul – Sep 2015 | The Strategic Community Reference Group met on 30 July and 23 September to consider the review of the <i>Bike Plan 2009-2015</i> and the draft <i>Waste Management Plan 2015-2020</i> .<br><br>Development of a new work plan has been delayed until after the 2015 elections to allow for the re-establishment of the Strategic Community Reference Group.                                    |                |               |
|   |  |  |                |  |                |               |

## GOVERNANCE AND LEADERSHIP

|  | Project  | Milestone   | Target Quarter | Comments   | Project Status | Budget Status |
|--|--|---|----------------|--|----------------|---------------|
|  | and stakeholders to provide advice to Council on matters of significant community interest.  | <ul style="list-style-type: none"> <li>Advertise Expression of Interest for new SCRG members following Council Elections.</li> <li>Appoint new SCRG members and seek endorsement of 2015-2016 work plan.</li> </ul> | Oct – Dec 2015 | <p>The Strategic Community Reference Group met on 5 October to consider the review of the <i>Bike Plan 2009-2015</i>.</p> <p>An Expression of Interest was advertised during the quarter for the vacant North Ward and South-East Ward positions. New appointments will be determined by Council in the third quarter.</p> <p>A new 2016 Work Plan for the Strategic Community Reference Group was adopted by Council at its meeting held on 15 December 2015.</p> |                | ✓             |
|  |  | <ul style="list-style-type: none"> <li>Conduct meetings in accordance with the agreed work plan.</li> </ul>   | Jan – Mar 2016 |  |                |               |
|  |  | <ul style="list-style-type: none"> <li>Conduct meetings in accordance with the agreed work plan.</li> </ul>   | Apr – Jun 2016 |  |                |               |
|  | <b>Publications</b><br>Develop and distribute a range of newsletters for the community (eg City News) which provide information on matters related to the City of Joondalup.   | <ul style="list-style-type: none"> <li>Print and distribute community newsletters.</li> </ul>   | Jul – Sep 2015 | <p>The Budget News edition of <i>City News</i> was printed and distributed to all residents with the annual rates notices in July 2015.</p> <p>The City's <i>What's On</i> calendar of events was published at the beginning of each month in the Community Newspapers.</p> <p>The City's full-page <i>Joondalup Voice</i> was published every fortnight in the Community Newspapers.</p>  |                |               |
|  |  | <ul style="list-style-type: none"> <li>Print and distribute community newsletters.</li> </ul>   | Oct – Dec 2015 | <p>The Spring and Summer editions of <i>City News</i> were printed and distributed to all residents in October and December 2015.</p> <p>The City's <i>What's On</i> calendar of events was published at the beginning of each month in the Community Newspapers.</p> <p>The City's full-page <i>Joondalup Voice</i> was published every fortnight in the Community Newspapers.</p>  |                | ✓             |
|  |  | <ul style="list-style-type: none"> <li>Print and distribute community newsletters.</li> </ul>   | Jan – Mar 2016 |  |                |               |
|  |  | <ul style="list-style-type: none"> <li>Print and distribute community newsletters.</li> </ul>   | Apr – Jun 2016 |  |                |               |
| <b>Objective:</b> For the community to have confidence and trust in the City that it can deliver services effectively and transparently. | <b>Annual Report</b><br>Prepare and present an Annual Report of City activity to demonstrate achievements against the City's Annual Plan and present the report to the Annual General Meeting of Electors.   | <ul style="list-style-type: none"> <li>Present 2014-2015 Annual Report to Council for endorsement.</li> <li>Present the Annual Report to the Annual General Meeting of Electors.</li> </ul>                         | Oct – Dec 2015 | <p>The 2014-2015 Annual Report was endorsed by Council at its meeting held on 23 November 2015.</p> <p>The Annual Report was presented to the Annual General Meeting of Electors on 15 December 2015.</p>  |                | ✓             |
|  | <b>Compliance Audit Return</b><br>Submit the Compliance Audit Return to the Department of Local Government for the period 1 January 2015 to 31 December 2015 by 31 March 2016 in accordance with Regulations 14 and 15 of the Local Government (Audit) Regulations 1996. | <ul style="list-style-type: none"> <li>Present Compliance Audit Return to Council for endorsement.</li> <li>Submit the Compliance Audit Return to the Department of Local Government and Communities.</li> </ul>    | Jan – Mar 2016 |  |                |               |



## GOVERNANCE AND LEADERSHIP

| Project  | Milestone   | Target Quarter  | Comments  | Project Status  | Budget Status |
|--|---|---|---|---|---------------|
| <b>Integrated Planning and Reporting Framework (IPRF)</b><br>Demonstrate compliance with the Western Australian Department of Local Government and Communities' Integrated Planning and Reporting Framework and align City planning documents to this Framework. | <ul style="list-style-type: none"> <li>Commence review of the Corporate Business Plan.</li> </ul>                                       | Oct – Dec 2015  | A review of the Corporate Business Plan commenced during the quarter. |   | ✓             |
|  | <ul style="list-style-type: none"> <li>Continue review of the Corporate Business Plan.</li> </ul>                                       | Jan – Mar 2016  |   |   |               |
|  | <ul style="list-style-type: none"> <li>Present report to Council on the review of the Corporate Business Plan.</li> </ul>               | Apr – Jun 2016  |   |   |               |
|  | <b>Customer Satisfaction Survey</b><br>Conduct an annual survey of residents to measure customer satisfaction with the City's services. | <ul style="list-style-type: none"> <li>Obtain results from the 2014-2015 Survey and identify and implement improvements for individual services.</li> <li>Communicate survey findings to Elected Members.</li> </ul>  | Jul – Sep 2015  | The results from the 2014-2015 Customer Satisfaction Survey were received in July 2015. The results and the improvement action plan were presented to Elected Members in September.   |               |
|  |   | <ul style="list-style-type: none"> <li>Present report to Council on the results of the 2014-2015 Survey.</li> </ul>   | Oct – Dec 2015  | A report on the results of the 2014-2015 Customer Satisfaction Survey was presented to Council at its meeting held on 23 November 2015.   | ✓             |
|  |   | <ul style="list-style-type: none"> <li>Develop and distribute Request for Quotation for consultants to deliver the 2015-2016 Customer Satisfaction Survey.</li> </ul>   | Jan – Mar 2016  |   |               |
|  |   | <ul style="list-style-type: none"> <li>Conduct 2015-2016 Annual Customer Satisfaction Survey.</li> <li>Appoint consultants for 2015-2016 Customer Satisfaction Survey.</li> </ul>   | Apr – Jun 2016  |   |               |
|  | <b>Policy Development and Review</b><br>Review existing policies and develop new policies as required.                                  | <ul style="list-style-type: none"> <li>Review existing policies and develop new policies as required.</li> <li>Present all major reviews of policies or new policies to the Policy Committee.</li> <li>Present new or revised policies to Council for endorsement as appropriate</li> </ul> | Jul – Sep 2015  | A Policy Committee meeting was held on 10 August 2015 at which the following matters were considered: <ul style="list-style-type: none"> <li>A review of the <i>Specified Area Rating Policy</i>;</li> <li>A draft <i>City Playground Shade Policy</i>, post community consultation;</li> <li>A draft <i>Home Business Policy</i>, post public advertising;</li> <li>A draft <i>Use of Sea Containers Policy</i>, post public advertising;</li> <li>A draft <i>Residential Development Local Planning Policy</i>;</li> <li>A draft <i>Non-Residential Buildings Local Planning Policy</i>; and</li> <li>A draft <i>High Risk Bookings in Community Facilities Policy</i>.</li> </ul> Council considered the Policy Committee's recommendations at its meeting held on 17 August 2015 and resolved to: <ul style="list-style-type: none"> <li>Adopt the <i>Specified Area Rating Policy</i>, with amendments;</li> <li>Adopt the <i>City Playground Shade Policy</i>;</li> <li>Adopt the <i>Home Business Policy</i>;</li> <li>Adopt the <i>Use of Sea Containers Policy</i>;</li> <li>Release the draft <i>Height of Non-Residential Buildings Local Planning Policy</i> and draft <i>Residential Development Local Planning Policy</i> for public comment; and</li> <li>Adopt the <i>High Risk Bookings in Community Facilities Policy</i>.</li> </ul> |               |

## GOVERNANCE AND LEADERSHIP

| Project | Milestone  | Target Quarter | Comments   | Project Status | Budget Status |
|---------|--|----------------|--|----------------|---------------|
|         | <ul style="list-style-type: none"> <li>Review existing policies and develop new policies as required.</li> <li>Present all major reviews of policies or new policies to the Policy Committee.</li> <li>Present new or revised policies to Council for endorsement as appropriate.</li> </ul>   | Oct – Dec 2015 | <p>A Policy Committee was held on 30 November 2015 at which the following matters were considered:</p> <ul style="list-style-type: none"> <li>A review of the <i>Stormwater Management Policy</i>;</li> <li>A review of the <i>Installation of Telecommunications Facilities Policy</i>;</li> <li>The draft <i>Height of Non-Residential Buildings Local Planning Policy</i> and draft <i>Residential Development Local Planning Policy</i>, post community consultation;</li> <li>A review of the <i>Memorials in Public Reserves Policy</i>.</li> </ul> <p>Council considered the Policy Committee's recommendations at its meeting held on 15 December 2015 and resolved to:</p> <ul style="list-style-type: none"> <li>Adopt the revised <i>Stormwater Management Policy</i>;</li> <li>Release the <i>Installation of Telecommunications Facilities Policy</i> for public comment;</li> <li>Adopt the <i>Height of Non-Residential Buildings Local Planning Policy</i> and <i>Residential Development Local Planning Policy</i>, with amendments;</li> <li>Revoke the <i>Height and Scale of Buildings within Residential Areas Policy</i> and the <i>Height of Buildings within the Coastal Area (Non-Residential Zones) Policy</i>.</li> </ul> |                | ✓             |
|         | <ul style="list-style-type: none"> <li>Develop policy review schedule for 2016.</li> <li>Review existing policies and develop new policies as required.</li> <li>Present all major reviews of policies or new policies to the Policy Committee.</li> <li>Present new or revised policies to Council for endorsement as appropriate.</li> </ul> | Jan – Mar 2016 |  |                |               |
|         | <ul style="list-style-type: none"> <li>Review existing policies and develop new policies as required.</li> <li>Present all major reviews of policies or new policies to the Policy Committee.</li> <li>Present new or revised policies to Council for endorsement as appropriate.</li> </ul>   | Apr – Jun 2016 |  |                |               |
|         | <b>Local Laws – Development and Review</b><br>Develop new or amend existing local laws, as required.   | Jul – Sep 2015 | The <i>Parking Amendment Local Law 2015</i> was endorsed by Council at its meeting held on 17 August 2015. The <i>Local Government and Public Property Amendment Local Law 2015</i> was endorsed by Council for the purposes of public advertising.  |                |               |
|         |  | Oct – Dec 2015 | <p>The <i>Local Government and Public Property Amendment Local Law 2015</i> was gazetted and came into effect during the quarter.</p> <p>At its meeting held on 15 December Council declared its intention to make a determination under the <i>Local Government and Public Property Local Law 2014</i> to prohibit the placing and maintaining of clothing bins on local government land. This was subsequently publicly advertised.</p>  |                | ✓             |
|         |  | Jan – Mar 2016 |  |                |               |
|         |  | Apr – Jun 2016 |  |                |               |

## GOVERNANCE AND LEADERSHIP

| Project   | Milestone   | Target Quarter | Comments   | Project Status | Budget Status |
|---|---|----------------|--|----------------|---------------|
| <b>Delegated Authority Manual</b><br>Conduct an annual review of the Delegated Authority Manual in accordance with legislation.   | <ul style="list-style-type: none"> <li>Present report to Council seeking endorsement of Review of Delegations.</li> </ul>   | Apr – Jun 2016 |  |                |               |
| <b>Online Applications</b><br>Implement further functionality for an online service for the lodgement and processing of building, health and planning applications.   | <ul style="list-style-type: none"> <li>Expand service to include Planning Applications.</li> </ul>  | Oct – Dec 2015 | The development of online applications continued during the quarter, with building, planning and environmental health applications ready to go live. A system change implemented by the software providers has caused a delay and the system will now go live in the third quarter.  |                | ✓             |
|   | <ul style="list-style-type: none"> <li>Expand service to include Environmental Health Applications.</li> </ul>  | Jan – Mar 2016 |  |                |               |
| <b>Electronic Communication</b><br>Improve communication to the community through: <ul style="list-style-type: none"> <li>Ongoing review and development of the City's website to ensure the website is informative and engaging, and incorporates up-to-date tools and functionality.</li> <li>Maintain the user friendly version of the City's website for mobile applications.</li> <li>Prepare and distribute electronic newsletters and associated on-line communication.</li> <li>Manage the City's social media platforms to engage and communicate with the community.</li> </ul> | <ul style="list-style-type: none"> <li>Launch mobile website.</li> <li>Provide electronic newsletters and documents on the City's activities.</li> <li>Communicate and engage with the community via social media platforms.</li> </ul> | Jul – Sep 2015 | <p>The City's mobile website was made available to local residents and other users at <a href="http://m.joondalup.wa.gov.au">m.joondalup.wa.gov.au</a>.</p> <p>The City provided the following e-newsletters to local residents in this quarter:</p> <ul style="list-style-type: none"> <li>Joondalup Voice;</li> <li>Libraries Online;</li> <li>Leisure Online;</li> <li>Art in Focus;</li> <li>Business Online;</li> <li>School Connections;</li> <li>Clubs in Focus; and</li> <li>Y-Lounge.</li> </ul> <p>The City was active on social media this quarter with the City's online following now exceeding 14,000 people.</p> <p>Significant community engagement on social media was undertaken this quarter including posts regarding:</p> <ul style="list-style-type: none"> <li>A Community Newspaper Group story on State Government Office Accommodation in Joondalup;</li> <li>A new Aldi store due to open in Lakeside Joondalup Shopping City;</li> <li>A historical photo of Whitfords Ave and Marmion Ave; and</li> <li>Before and after photos of the new Ocean Reef Jetties.</li> </ul> |                |               |

## GOVERNANCE AND LEADERSHIP

|  | Project   | Milestone  | Target Quarter | Comments   | Project Status | Budget Status |
|--|---|--|----------------|--|----------------|---------------|
|  |   | <ul style="list-style-type: none"> <li>Provide electronic newsletters and documents on the City's activities.</li> <li>Communicate and engage with the community via social media platforms.</li> </ul>  | Oct – Dec 2015 | <p>The City provided the following e-newsletters to local residents in this quarter:</p> <ul style="list-style-type: none"> <li>Joondalup Voice;</li> <li>Libraries Online;</li> <li>Leisure Online;</li> <li>Art in Focus;</li> <li>Business Online;</li> <li>School Connections;</li> <li>Clubs in Focus; and</li> <li>Y-Lounge.</li> </ul> <p>The City was active on social media this quarter with the City's online following now exceeding 15,000 people.</p> <p>Significant community engagement on social media was undertaken this quarter including posts regarding:</p> <ul style="list-style-type: none"> <li>The Little Feet Festival Video;</li> <li>The first day of Summer and photo of Mullaloo Beach;</li> <li>The Westfield Whitford City's Shopping Centre upgrade;</li> <li>An update on the Ocean Reef Marina;</li> <li>The Mindarie Regional Council's No Glass Campaign; and</li> <li>Homelessness in the Cities of Wanneroo and Joondalup.</li> </ul> |                | ✓             |
|  |   | <ul style="list-style-type: none"> <li>Investigate Phase Two development and implementation of the mobile website.</li> <li>Commence review of City's website for upgrade in 2016-2017.</li> <li>Provide electronic newsletters and documents on the City's activities.</li> <li>Communicate and engage with the community via social media platforms</li> </ul>   | Jan – Mar 2016 |  |                |               |
|  |   | <ul style="list-style-type: none"> <li>Continue investigation into Phase Two development and implementation of the mobile website.</li> <li>Continue review of City's website for upgrade in 2016-2017.</li> <li>Provide electronic newsletters and documents on the City's activities.</li> <li>Communicate and engage with the community via social media platforms.</li> <li>Review user engagement of social media platforms.</li> </ul> | Apr – Jun 2016 |  |                |               |
| <b>Objective:</b> For the City to demonstrate advocacy in promoting the needs and ambitions of the City and the advancement of local | <b>Strategic Position Statements</b><br>Conduct review of the City's Position Statements to provide clear, overall direction on specific political and strategic matters. | Commence review of Strategic Position Statements.  | Jan – Mar 2016 |  |                |               |
|  |   | Present report to Council seeking endorsement of revised Strategic Position Statements.  | Apr – Jun 2016 |  |                |               |

## GOVERNANCE AND LEADERSHIP

|             | Project   | Milestone  | Target Quarter | Comments   | Project Status | Budget Status |
|-------------|---|--|----------------|--|----------------|---------------|
| government. | <b>External Partnerships</b><br>Continue representation on key external bodies including Joondalup Learning Precinct Board, ALGA, LGMA, WALGA, Mindarie Regional Council, Tamala Park Regional Council, Edith Cowan University Business and Innovation Centre, Emergency Management Committees and the Metropolitan Regional Road Group | <ul style="list-style-type: none"> <li>Participate actively in key external body meetings and events.</li> </ul> | Jul – Sep 2015 | The following external meetings and events were attended by City representatives: <ul style="list-style-type: none"> <li>WALGA State Council;</li> <li>WALGA North Zone;</li> <li>Community Cabinet Meeting;</li> <li>Individual meetings with the Minister for Transport, Minister for Planning; Culture and the Arts, and the Minister for Regional Development; Lands;</li> <li>Local Government Managers Australia;</li> <li>Joondalup Learning Precinct Board;</li> <li>WCI Academy of Health Sciences Council of Industry Partners;</li> <li>Tri-Cities CEO Meeting;</li> <li>Tamala Park Regional Council CEO Group Meeting;</li> <li>Permit Authority Working Group;</li> <li>Headspace Joondalup;</li> <li>Joondalup Wanneroo Interagency Homelessness Action Group;</li> <li>(Library) Operational Management Group;</li> <li>Public Libraries WA Executive and General Meetings;</li> <li>District Emergency Management Committee;</li> <li>Local Emergency Management Committee;</li> <li>MRC Strategic Working Group;</li> <li>Mindarie Regional Council;</li> <li>MWAC Officer Advisory Group;</li> <li>Metropolitan Environmental Health Managers Group; and</li> <li>Local Health Authorities Analytical Committee.</li> </ul> |                |               |
|             |   | <ul style="list-style-type: none"> <li>Participate actively in key external body meetings and events.</li> </ul> | Oct – Dec 2015 | The following external meetings and events were attended by City representatives: <ul style="list-style-type: none"> <li>WALGA State Council;</li> <li>WALGA North Zone;</li> <li>Community Cabinet Meeting;</li> <li>Local Government Managers Australia;</li> <li>Joondalup Learning Precinct Board;</li> <li>WCI Academy of Health Sciences Council of Industry Partners;</li> <li>Tri-Cities CEO Meeting;</li> <li>Tamala Park Regional Council CEO Group Meeting;</li> <li>Permit Authority Working Group;</li> <li>Headspace Joondalup;</li> <li>Joondalup Wanneroo Interagency Homelessness Action Group;</li> <li>(Library) Operational Management Group;</li> <li>Public Libraries WA Executive and General Meetings;</li> <li>District Emergency Management Committee;</li> <li>Local Emergency Management Committee;</li> <li>MRC Strategic Working Group;</li> <li>Mindarie Regional Council;</li> <li>MWAC Officer Advisory Group;</li> <li>ECU Planning Consultative Committee;</li> <li>Metropolitan Environmental Health Managers Group; and</li> <li>Local Health Authorities Analytical Committee.</li> </ul>  |                | ✓             |
|             |   | <ul style="list-style-type: none"> <li>Participate actively in key external body meetings and events.</li> </ul> | Jan – Mar 2016 |  |                |               |



## GOVERNANCE AND LEADERSHIP

| Project   | Milestone  | Target Quarter | Comments  | Project Status | Budget Status |
|---|--|----------------|---|----------------|---------------|
|   | <ul style="list-style-type: none"> <li>Participate actively in key external body meetings and events.</li> </ul>   | Apr – Jun 2016 |   |                |               |
| <b>Submissions to State and Federal Government</b><br>Coordinate requests for submissions from the State and Federal Government on strategic policy matters affecting the City.   | <ul style="list-style-type: none"> <li>Prepare submissions as requested.</li> </ul>  | Jul – Sep 2015 | The City prepared submissions in response to: <ul style="list-style-type: none"> <li>The draft <i>Perth and Peel @ 3.5 million</i> North-West Sub-regional Planning Framework;</li> <li>The WALGA Discussion Paper – <i>Aged Care in Western Australia: Understanding the Issues</i>;</li> <li>The ALGA – <i>Community Infrastructure Ideas Register: Scoping the Needs</i>;</li> <li>The Department of Planning draft <i>State Planning Policy 3.7: Planning for Bushfire Risk Management and Associated Guidelines</i>; and</li> <li>The WALGA <i>Shopping Trolley Management Paper</i>.</li> </ul>   |                |               |
|   | <ul style="list-style-type: none"> <li>Prepare submissions as requested.</li> </ul>  | Oct – Dec 2015 | The City prepared submissions in response to: <ul style="list-style-type: none"> <li>The DLGC <i>Caravan Parks and Camping Grounds Act 1995</i> review;</li> <li>The WAPC <i>Draft Liveable Neighbourhoods 2015</i>; and</li> <li>The WAPC proposed MRS Amendment (1286/57) – Western Power Omnibus 1.</li> </ul>   |                | ✓             |
|   | <ul style="list-style-type: none"> <li>Prepare submissions as requested.</li> </ul>  | Jan – Mar 2016 |   |                |               |
|   | <ul style="list-style-type: none"> <li>Prepare submissions as requested.</li> </ul>  | Apr – Jun 2016 |   |                |               |
| <b>Jinan Sister City Relationship</b><br>Maintain Sister City Relationship with Jinan in China through: <ul style="list-style-type: none"> <li>Investigating opportunities to encourage economic linkages between Joondalup and Jinan.</li> <li>Investigating and promoting trade and investment opportunities for local businesses; and</li> <li>Identifying and promoting opportunities for educational links.</li> </ul> | <ul style="list-style-type: none"> <li>Co-ordinate outbound delegation to Shanghai and Jinan.</li> <li>Liaise with Woodvale Secondary College and St Mark's Anglican Community School to provide support for the Sister School Relationships.</li> </ul> | Jul – Sep 2015 | Mayor Pickard led a delegation to Jinan in September to celebrate the 10 Year Anniversary of the Sister City Relationship and to meet with key commerce and tourism agencies. The Delegation included City of Joondalup representatives as well as representatives from ECU, Woodvale Secondary College and St Mark's Anglican Community School.<br><br>The City of Joondalup members of the Delegation visited Shanghai en route to Jinan in order to introduce the City's Investment Attraction Prospectus, <i>Joondalup has the Edge</i> to the Australian Trade Commission, Shanghai Office in order to advance economic development opportunities. The Delegation also attended a Briefing with the Minister for Trade and Investment, Andrew Robb on the opportunities from the China-Australia Free Trade Agreement. |                |               |
|   | <ul style="list-style-type: none"> <li>Present report to Elected Members on the outbound delegation to Shanghai and Jinan.</li> </ul>  | Oct – Dec 2015 | A report on the City of Joondalup delegation to Shanghai and Jinan, China, was presented to Council at its meeting held on 15 December 2015.  |                | ✓             |

## FINANCIAL SUSTAINABILITY

|   | Project   | Milestone  | Target Quarter | Comments   | On Time | On Budget |
|---|---|--|----------------|--|---------|-----------|
| <b>Objective:</b> To be less reliant on rates as the primary basis for revenue by leveraging alternative income streams | <b>City Freehold Property Disposals</b><br>Develop and implement a strategy for the optimisation and rationalisation of available property within the City to provide an additional revenue stream. | <ul style="list-style-type: none"> <li>Progress actions necessary for the sale of properties as previously endorsed by Council.</li> </ul>   | Jul – Sep 2015 | At its meeting held in July Council endorsed the rezoning of Lot 202 (20), Lot 201 (22) and Lot 200 (24) Kanangra Crescent, Greenwood and Lots 642/643 (57/59) Marri Road, Duncraig.<br><br>Council adopted Amendment No. 80 on 17 August 2015 which relates to Lot 1001 (14) Camberwarra Drive, Craigie. The amendment documents have been forwarded to the Western Australian Planning Commission for final approval<br><br>Settlement on the sale of land at Lot 549 (11) Moolanda Boulevard, Kingsley was finalised on 21 August 2015.<br><br>At its meeting held on 15 September 2015 Council endorsed the sale of Lot 745 (103) Caridean Street, Heathridge, and Lot 23 (77) Gibson Avenue, Padbury, following a period of public advertising.<br><br>Lot 803 (15) Burlos Court, Joondalup is now ready for the disposal process to begin.   |         |           |
|   |   | <ul style="list-style-type: none"> <li>Progress the draft Property Strategy of City owned and managed property.</li> </ul>   | Oct – Dec 2015 | Actions to support the development of the Property Strategy continued during the quarter.<br><br>A status report on the progress of the City's proposed disposal of the freehold land sites, including the proposed acquisition of Lot 12223 (12) Blackwattle Parade, Padbury, was presented to the Finance Committee at its meeting held on 24 November 2015.<br><br>The City is waiting on final approval from the Western Australian Planning Commission regarding Amendment No. 80 which relates to Lot 1001 (14) Camberwarra Drive, Craigie.<br><br>Settlement on the sale of land at Lot 745 (103) Caridean Street, Heathridge was finalised on 2 December 2015. The developers for Lot 23 (77) Gibson Avenue, Padbury have lodged a development application.<br><br>The 42-day public advertising periods to recode Lot 202 (20), Lot 201 (22) and Lot 200 (24) Kanangra Crescent, Greenwood and Lots 642/643 (25/59) Marri Road, Duncraig from R20 to R40 closed on 4 December 2015 and the results will be reported to Council. |         | ✓         |
|   |   | <ul style="list-style-type: none"> <li>Seek Council endorsement of the draft Property Strategy.</li> </ul>   | Jan – Mar 2016 |  |         |           |
|   |   | <ul style="list-style-type: none"> <li>Subject to Council endorsement, implement the Property Strategy.</li> </ul>   | Apr – Jun 2016 |  |         |           |
|   | <b>Building Certification</b><br>Develop and implement a Building Certification Service.  | <ul style="list-style-type: none"> <li>Develop costing model for delivery of building approval service.</li> </ul>   | Jan – Mar 2016 |  |         |           |
|   |   | <ul style="list-style-type: none"> <li>Continue to develop costing model for delivery of building approval services.</li> </ul>  | Apr – Jun 2016 |  |         |           |
|   | <b>Property Management Framework</b><br>Continue implementation of the Property Management Framework to ensure efficient management of the City's leased buildings.                                 | <ul style="list-style-type: none"> <li>Negotiate and implement new lease and licence agreements.</li> <li>Negotiate expired lease and licence agreements.</li> <li>Present report to Council on the status of the Property Management Framework</li> </ul> | Jul – Sep 2015 | Five lease agreements were completed and signed by all parties during the quarter.<br><br>Negotiations on a further 11 lease agreements and 7 licence agreements continued during the quarter.<br><br>A report on the status of the Property Management Framework was presented to Council during the quarter.   |         |           |

## FINANCIAL SUSTAINABILITY

| Project | Milestone   | Target Quarter   | Comments   | On Time  | On Budget |
|---------|---|--|--|--|-----------|
|         | <ul style="list-style-type: none"> <li>Negotiate and implement new lease and licence agreements.</li> <li>Negotiate expired lease and licence agreements</li> </ul>   | Oct – Dec 2015   | <p>Five lease agreements and three licence agreements were completed and signed by all parties during the quarter.</p> <p>Negotiations on a further five lease agreements and three licence agreements continued during the quarter.</p> |  | ✓         |
|         |   | Jan – Mar 2016   |  |  |           |
|         |   | Apr – Jun 2016   |  |  |           |
|         | <b>20 Year Strategic Financial Plan</b><br>Conduct review of the 20 Year Strategic Financial Plan. The Plan provides a long term view of the City's funding needs to enable the Strategic Community Plan to be achieved and includes 20 year financial projections. | <ul style="list-style-type: none"> <li>Present the draft 2014-2015 to 2033-2034 Plan to the Strategic Financial Management Committee for review</li> </ul>   | Jul – Sep 2015   | The draft 20 Year Strategic Financial Plan was presented to the Strategic Financial Management Committee for review in July 2015. It was referred back for further consideration and will be presented back to the November 2015 meeting.  |           |
|         |   | <ul style="list-style-type: none"> <li>Review timings and key assumptions of major projects in preparation for the development of the 2015-2016 to the 2034-2035 Strategic Financial Plan.</li> <li>Seek feedback from Strategic Financial Management Committee on major project timings and other key assumptions.</li> </ul> | Oct – Dec 2015   | <p>The draft 2014-15 to 2033-34 Strategic Financial Plan was endorsed by the Strategic Financial Management Committee on 24 November and adopted by Council 15 December.</p> <p>The timings and key assumptions for the 2015-16 to 2034-35 Plan are being prepared, and will be presented to the Strategic Financial Management Committee in the fourth quarter.</p> | ✓         |
|         |   | <ul style="list-style-type: none"> <li>Develop revised Strategic Financial Plan 2015-2016 to 2034-2035.</li> </ul>   | Jan – Mar 2016   |  |           |
|         |   | <ul style="list-style-type: none"> <li>Review revised plan as part of annual budget workshops.</li> <li>Present the revised Plan to the Strategic Financial Management Committee for review</li> </ul>   | Apr – Jun 2016   |  |           |
|         |   | <ul style="list-style-type: none"> <li>Present report on the Framework to Elected Members for review.</li> </ul>   | Jan – Mar 2016   |  |           |
|         | <b>Parks and Public Open Spaces Classification Framework</b><br>Progress the Parks and Public Open Space Classification Framework developed to assist in the planning and provision of park infrastructure in City parks and open spaces                            |  |  |  |           |

## FINANCIAL SUSTAINABILITY

|   | Project   | Milestone   | Target Quarter | Comments   | On Time | On Budget |
|---|---|---|----------------|--|---------|-----------|
| <b>Objective:</b> To effectively plan for the funding and delivery of major projects. | <b>Capital Works Program</b><br>As detailed in the Capital Works Program 2015-2016: <ul style="list-style-type: none"> <li>• Parks Development Program;</li> <li>• Parks Equipment Program;</li> <li>• Foreshore and Natural Areas Management Program;</li> <li>• Streetscape Enhancement Program;</li> <li>• Local Road Traffic Management Program;</li> <li>• Parking Facilities Program;</li> <li>• Major Road Construction Program;</li> <li>• New Paths Program;</li> <li>• Path Replacement Program;</li> <li>• Stormwater Drainage Program;</li> <li>• Street Lighting Program</li> <li>• Road Preservation and Resurfacing Program;</li> <li>• Bridges Program; and</li> <li>• Major Building Construction Works Program;</li> <li>• Major Projects Program.</li> </ul> | <ul style="list-style-type: none"> <li>• Deliver programs in accordance with the Capital Works Program.</li> <li>• Present bi-monthly report to the Capital Works Committee.</li> </ul> | Ongoing        | Progressing in accordance with Programs (see attached Capital Works Program Report). Bi-Monthly reports were submitted to the Finance Committee.                       |         | ✓         |
|   | <b>Dualling of Whitfords Avenue, Kallaroo</b><br>Complete two year project for the dualling of Whitfords Avenue from Northshore Drive to Belrose Entrance.  | <ul style="list-style-type: none"> <li>• Award tender.</li> <li>• Commence construction</li> </ul>  | Jul – Sep 2015 | The tender for the dualling of Whitfords Avenue, Kallaroo, was awarded in August. Construction works commenced in September.   |         |           |
|   |   | <ul style="list-style-type: none"> <li>• Continue construction.</li> </ul>  | Oct – Dec 2015 | Construction on the dualling of Whitfords Avenue, Kallaroo, continued during the quarter.  |         | ✓         |
|   |   | <ul style="list-style-type: none"> <li>• Continue construction.</li> </ul>  | Jan – Mar 2016 |  |         |           |
|   |   | <ul style="list-style-type: none"> <li>• Complete construction.</li> </ul>  | Apr – Jun 2016 |  |         |           |
|   | <b>Dualling of Ocean Reef Road, Ocean Reef</b><br>Continue three year project to dual Ocean Reef Road from Marmion Avenue to Oceanside Promenade, including roundabouts and removal of car park at Mirror Park.   | <ul style="list-style-type: none"> <li>• Finalise detailed design.</li> <li>• Advertise tender.</li> </ul>  | Jul – Sep 2015 | The detailed design for the dualling of Ocean Reef Road, Ocean Reef, was finalised during the quarter.<br>The tender was advertised between 15 August and 2 September. |         |           |
|   |   | <ul style="list-style-type: none"> <li>• Appoint contractor.</li> </ul>   | Oct – Dec 2015 | A contractor was appointed in December for the dualling of Ocean Reef Road, Ocean Reef.  |         | ✓         |
|   |   | <ul style="list-style-type: none"> <li>• Commence construction.</li> </ul>  | Jan – Mar 2016 |  |         |           |
|   |   | <ul style="list-style-type: none"> <li>• Continue construction.</li> </ul>  | Apr – Jun 2016 |  |         |           |

## FINANCIAL SUSTAINABILITY

|  | Project   | Milestone  | Target Quarter | Comments  | On Time | On Budget |
|--|---|--|----------------|---|---------|-----------|
|  | <b>Ocean Reef Road and Joondalup Drive Intersection Upgrade</b><br><br>Commence two year project to upgrade the intersection of Ocean Reef Road and Joondalup Drive to improve increasing traffic volumes and intersection performance and safety.                          | • Develop project scope.   | Jul – Sep 2015 | The development of the project scope was completed during the quarter. A preliminary design for the intersection upgrade was also completed.  |         |           |
|  |   | • Finalise project scope.<br>• Advertise request for quotation for a design consultant.  | Oct – Dec 2015 | The project scope for the Ocean Reef Road and Joondalup Drive intersection upgrade was completed in the previous quarter.<br>The civil design for the project has commenced and will be undertaken in-house. Quotes have been received for the signal design aspect of the project. |         | ✓         |
|  |   | • Appoint consultant to undertake design.  | Jan – Mar 2016 |   |         |           |
|  |   | • Finalise design.<br>• Finalise tender documentation for construction.  | Apr – Jun 2016 |   |         |           |
|  | <b>Marmion Foreshore Parking</b><br><br>Develop parking facilities and associated traffic treatments at Marmion Foreshore.  | • Continue construction.   | Jul – Sep 2015 | Works on the Marmion Foreshore Management Parking facility continued during the quarter.  |         |           |
|  |   | • Complete construction.   | Oct – Dec 2015 | The Marmion Foreshore Parking facility was opened to the public during the quarter. Construction of stairs and a footpath to the beach level will be undertaken in the third quarter.   |         | ✓         |
|  | <b>State and Federal Funding of Infrastructure Projects</b><br><br>Continue to liaise with key stakeholders such as State and Federal Government Agencies to maximise funding opportunities for key infrastructure projects for the Perth Metropolitan North West Corridor. | • Submit funding request for Roads to Recovery Projects.   | Jul – Sep 2015 | A Roads to Recovery funding request was submitted during the quarter.   |         | ✓         |
|  |   | • Submit funding request for Metropolitan Regional Roads Group Rehabilitation Projects.  | Jan – Mar 2016 |   |         |           |
|  |   | • Submit funding request to Main Roads Western Australia for Black Spot Funding Program.<br>• Submit funding request for Metropolitan Regional Roads Group Improvement Projects. | Apr – Jun 2016 |   |         |           |



## QUALITY URBAN ENVIRONMENT

|   | Project   | Milestone  | Target Quarter | Comments   | On Time | On Budget |
|---|---|--|----------------|--|---------|-----------|
| <b>Objective:</b> For the City's commercial and residential areas to be filled with quality buildings and appealing streetscapes. | <b>Local Planning Scheme No 3</b><br>Review the District Planning Scheme No 2 and develop Local Planning Scheme No 3 (LPS3) to guide planning and development in the City.  | <ul style="list-style-type: none"> <li>Refer draft LPS3 to Council seeking consent to advertise.</li> </ul>  | Jul – Sep 2015 | The State Government gazetted the new <i>Planning and Development (Local Planning Schemes) Regulations 2015</i> during the quarter. As a result the draft version of LPS3 was required to be amended to align with the new Regulations. The draft LPS3 is expected to be presented to Council in the second quarter seeking consent to advertise.  |         |           |
|   |   | <ul style="list-style-type: none"> <li>Refer draft LPS3 to the Environmental Protection Authority for advice.</li> <li>Refer the draft LPS3 to the Western Australian Planning Commission for consent to advertise.</li> </ul> | Oct – Dec 2015 | At its meeting held on 23 November 2015, Council resolved to prepare a new Local Planning Scheme. This is a procedural requirement which was not anticipated or accounted for in original timeframes. Notice of the resolution was published in the Joondalup Weekender with service authorities and adjoining local governments invited to make comment in respect to the resolution to prepare a new scheme.<br><br>It is anticipated that a draft version of LPS3 will be presented to Council in the third quarter. Referral to the Environmental Protection Authority and the Western Australian Planning Commission will occur following endorsement by Council. |         | ✓         |
|   |   | <ul style="list-style-type: none"> <li>Subject to Western Australian Planning Commission approval, advertise the draft LPS3.</li> </ul>  | Apr – Jun 2016 |  |         |           |
|   | <b>Local Planning Policies Review to support Local Planning Scheme No 3</b><br>Review existing planning policies to ensure consistency with the draft Local Planning Scheme No 3.   | <ul style="list-style-type: none"> <li>Continue preparation of draft LPS3 policies.</li> </ul>   | Jul – Sep 2015 | Preparation of the draft LPS3 policies continued during the quarter.   |         |           |
|   |   | <ul style="list-style-type: none"> <li>Continue preparation of draft LPS3 policies.</li> </ul>   | Oct – Dec 2015 | Preparation of the draft LPS3 policies continued during the quarter.   |         | ✓         |
|   |   | <ul style="list-style-type: none"> <li>Continue preparation of draft LPS3 policies.</li> </ul>   | Jan – Mar 2016 |  |         |           |
|   |   | <ul style="list-style-type: none"> <li>Refer draft LPS3 policies to Policy Committee for review.</li> <li>Refer draft LPS3 policies to Council for consent to advertise.</li> </ul>  | Apr – Jun 2016 |  |         |           |
|   | <b>Local Housing Strategy Implementation - Scheme Amendment and Policy Review/Development</b><br>Develop, initiate, advertise and adopt a Scheme Amendment and develop and review Planning policies to implement the recommendations of the Local Housing Strategy to encourage and enable housing infill and densification in appropriate locations. | <ul style="list-style-type: none"> <li>Present draft policies to Elected Members for review.</li> </ul>  | Jul – Sep 2015 | The draft policies were presented to the Elected Members in July 2015 and considered by the Policy Committee in August 2015. Consent to advertise the draft policies were endorsed by Council at its meeting held in August 2015.  |         |           |
|   |   | <ul style="list-style-type: none"> <li>Refer draft policies to Policy Committee for review.</li> <li>Refer draft policies to Council seeking consent to advertise.</li> </ul>  | Oct – Dec 2015 | The policies were adopted by Council at its meeting held on 15 December 2015.<br><br>Scheme Amendment No. 73 was approved by the Minister for Planning in December, subject to amendments.   |         | ✓         |
|   |   | <ul style="list-style-type: none"> <li>Advertise draft policies.</li> <li>Refer draft policies to Policy Committee following advertising.</li> <li>Refer draft policies to Council seeking endorsement.</li> </ul>             | Jan – Mar 2016 |  |         |           |

## QUALITY URBAN ENVIRONMENT

|   | Project  | Milestone   | Target Quarter | Comments  | On Time | On Budget |
|---|--|---|----------------|---|---------|-----------|
|   | <b>Burns Beach Master Plan</b><br>Develop a master plan to guide the future enhancement and provision of facilities including within the foreshore catchment area.                           | <ul style="list-style-type: none"> <li>Undertake revision of concept design.</li> </ul>   | Jul – Sep 2015 | The revision of the concept designs commenced during the quarter.   |         |           |
|   |  | <ul style="list-style-type: none"> <li>Present draft Burns Beach Master Plan and revised concept design to Elected Members for consideration.</li> </ul>  | Oct – Dec 2015 | The revision of the concept designs was completed during the quarter and it is anticipated that the concept designs will be presented to Elected Members for consideration in the third quarter.  |         | ✓         |
|   |  | <ul style="list-style-type: none"> <li>Advertise draft Master Plan for public consultation.</li> </ul>  | Apr – Jun 2016 |   |         |           |
| <b>Objective:</b> To have integrated land use and transport planning that provides convenient and efficient movement across the City. | <b>Integrated Transport Management Plan</b><br>Develop a Major Road Network Plan in preparation for an Integrated Transport Management Plan to inform future transport planning at the City. | <ul style="list-style-type: none"> <li>Finalise Project Plan and Consultant's Brief for the development of the Major Road Network Plan.</li> </ul>  | Oct – Dec 2015 | A Project Brief and Request For Quotation was prepared and advertised during the quarter.<br>Consultants were engaged for the preliminary assessment phase of the project.  |         | ✓         |
|   |  | <ul style="list-style-type: none"> <li>Engage consultant and commence development of Major Road Network Plan.</li> </ul>  | Jan – Mar 2016 |   |         |           |
|   |  | <ul style="list-style-type: none"> <li>Continue development of the Major Road Network Plan.</li> <li>Prepare Road Improvement Grant application if required.</li> </ul>   | Apr – Jun 2016 |   |         |           |
|   | <b>Bike Plan 2015-2020</b><br>Implement the Bike Plan to promote cycling in the City of Joondalup and to increase the number of people using the City's bicycle network and facilities.      | <ul style="list-style-type: none"> <li>Present final report on progress against the Bike Plan 2009-2015 to Elected Members.</li> <li>Present draft outline of Bike Plan 2015-2020 to the Strategic Community Reference Group for review.</li> <li>Develop grant applications for submission to Perth Bike Network for funding consideration.</li> <li>Implement community education programs related to cycling within the City.</li> </ul> | Jul – Sep 2015 | A final report on the progress against the actions within the Bike Plan 2009-2015 was developed and will be presented to Elected Members in the second quarter of 2015-2016.<br>A draft outline of the new Bike Plan 2015-2020 was developed and presented to the Strategic Community Reference Group in July.<br>The development of a grant application for submission to the Perth Bike Network commenced during the quarter. Funding approval for Robertson Road Cycle Path Upgrade has been received from Department of Transport.<br>Planning for the delivery of cycling related education initiatives for 2015-2016 has commenced. |         |           |
|   |  | <ul style="list-style-type: none"> <li>Present draft Bike Plan 2015-2020 to the Strategic Community Reference Group for review.</li> <li>Submit grant applications for projects to Perth Bike Network for funding consideration.</li> <li>Implement community education programs related to cycling within the City.</li> </ul>   | Oct – Dec 2015 | The draft Bike Plan 2015-2020 was presented to the Strategic Community Reference Group in October. The draft Plan was presented to Council in December and will be released for public consultation in the third quarter.<br>The City submitted an application for funding under the Perth Bicycle Network Program in December. The Department of Transport will provide the outcomes of the application by the end of the fourth quarter.<br>Planning for the delivery of cycling related education initiatives for Bike Week 2016 have continued.   |         | ✓         |
|   |  | <ul style="list-style-type: none"> <li>Present report to Council seeking endorsement to conduct community consultation.</li> <li>Conduct community consultation.</li> <li>Implement community education programs related to cycling within the City.</li> </ul>   | Jan – Mar 2016 |   |         |           |
|   |  |   |                |   |         |           |

## QUALITY URBAN ENVIRONMENT

|  | Project  | Milestone  | Target Quarter | Comments   | On Time | On Budget |
|--|--|--|----------------|--|---------|-----------|
|  |  | <ul style="list-style-type: none"> <li>Present final draft Bike Plan 2015-2020 to Council seeking endorsement.</li> <li>Implement actions in line with the Bike Plan 2015-2020.</li> <li>Implement community education programs related to cycling within the City.</li> </ul> | Apr – Jun 2016 |  |         |           |
|  | <b>Walkability Plan 2013-2018</b><br>Implement actions from the Walkability Plan to provide a comprehensive, coordinated, and improved network of walk and recreational paths for all residents and visitors to the City and the region. | <ul style="list-style-type: none"> <li>Implement actions from the Walkability Plan.</li> <li>Present report to Elected Members on progress against the Walkability Plan.</li> </ul>  | Jul – Sep 2015 | The following projects and actions were undertaken in line with the Walkability Plan during the quarter: <ul style="list-style-type: none"> <li>The continuation of signage projects in line with the Wayfinding Signage Strategy;</li> <li>Continued work to determine the content of Wayfinding signs along the Sunset Coast Trail; and</li> <li>Continued development of signage mapping.</li> </ul> A review of the initiatives undertaken from the Walkability Plan has been undertaken. A progress report on the implementation of the Walkability Plan will be presented to Elected Members in the second quarter.                                |         |           |
|  |  | <ul style="list-style-type: none"> <li>Implement actions from the Walkability Plan.</li> </ul>   | Oct – Dec 2015 | The following projects and actions were undertaken in line with the Walkability Plan during the quarter: <ul style="list-style-type: none"> <li>Three permanent cycling counters installed as part of the Walking and Cycling Counting Program. The locations are Neil Hawkins Park, Tom Simpson Park and Burns Beach;</li> <li>Continued work to determine the location and content of Wayfinding signs for the City Centre Area; and</li> <li>Continued development of signage mapping for Sunset Coast Trail signage.</li> </ul> A progress report on the implementation of the Walkability Plan was presented to Elected Members during the quarter. |         | ✓         |
|  |  | <ul style="list-style-type: none"> <li>Implement actions from the Walkability Plan.</li> </ul>   | Jan – Mar 2016 |  |         |           |
|  |  | <ul style="list-style-type: none"> <li>Implement actions from the Walkability Plan.</li> </ul>   | Apr – Jun 2016 |  |         |           |
|  | <b>Joondalup City Centre Street Lighting</b><br>Upgrade existing lighting and infrastructure to improve lighting efficiency, quality and safety for road users and pedestrians.  | <ul style="list-style-type: none"> <li>Seek endorsement of preferred luminaire and pole design.</li> </ul>   | Jul – Sep 2015 | Elected Members were provided the opportunity to give feedback on their preferred luminaire and pole design during the quarter.  |         |           |
|  |  | <ul style="list-style-type: none"> <li>Prepare tender for supply and installation of endorsed luminaire and pole.</li> </ul>   | Oct – Dec 2015 | A tender was advertised for the replacement of lights along Joondalup Drive during the quarter.  |         | ✓         |
|  |  | <ul style="list-style-type: none"> <li>Award tender and commence luminaire and pole replacement.</li> </ul>  | Jan – Mar 2016 |  |         |           |
|  |  | <ul style="list-style-type: none"> <li>Continue luminaire and pole replacement.</li> </ul>   | Apr – Jun 2016 |  |         |           |
| <b>Objective:</b> To have urban and green spaces which are attractive, well-utilised and | <b>Priority Two Entry Statements (Arterial Roads Program)</b><br>Implement the Landscape Master Plan   | <ul style="list-style-type: none"> <li>Commence construction of Priority Two Entry Statements.</li> </ul>  | Jul – Sep 2015 | Construction of the entry statements along Connolly Drive, Whitfords Avenue and Hepburn Avenue were completed during the quarter. Entry Statements along Warwick Road and Ocean Reef Road have commenced.  |         |           |

## QUALITY URBAN ENVIRONMENT

|   | Project   | Milestone   | Target Quarter | Comments   | On Time | On Budget |
|---|---|---|----------------|--|---------|-----------|
| enrich the lives of the community   | Arterial Roads Project to provide for ongoing enhancement of verges and medians that form part of the City's major road network, including:<br><ul style="list-style-type: none"><li>Hepburn Avenue</li><li>Ocean Reef Road</li><li>Whitfords Avenue</li><li>Warwick Road</li><li>Connolly Drive.</li></ul>   | • Continue construction of Priority Two Entry Statements.   | Oct – Dec 2015 | Construction of all Priority Two Entry Statements were completed during the quarter.   |         | ✓         |
|   |   | • Complete construction of Priority Two Entry Statements.   | Jan – Mar 2016 |  |         |           |
| <b>Objective:</b> To have quality and diverse landmark buildings within the Joondalup City Centre that enhances the vitality and vibrancy of the urban space. | <b>Joondalup Activity Centre Structure Plan and Transport Study Stage Two</b><br>Develop an Activity Centre Structure Plan for the Joondalup City Centre in accordance with the State Planning Policy 4.2 — Activity Centres for Perth and Peel, including the review of the Joondalup City Centre Car Parking for Commercial Development and a comprehensive transport study across identified activity centres to understand transport convergences, interactions and issues. | • Commence Project Plan for the Activity Centre Transport Study Stage Two.  | Jul – Sep 2015 | The scope of works required for Stage Two of the Transport Study was finalised in consultation with the project's traffic consultant during the quarter. The City met with Main Roads WA and the Department of Transport to ensure the scope of works aligned with the State Government's requirements.  |         |           |
|   |   | • Refer draft Activity Centre Structure Plan to Elected Members for review.<br>• Appoint consultant and commence data collection for the Activity Centre Transport Study Stage Two.   | Oct – Dec 2015 | The first draft of the Master Plan and the draft Activity Centre Structure Plan were provided to the City by the Urban Design consultant for consideration. The draft documents are expected to be presented to Elected Members in the third quarter for review  |         | ✓         |
|   |   | • Finalise draft Activity Centre Structure Plan.<br>• Conduct data collection for the Activity Centre Transport Study Stage Two.  | Jan – Mar 2016 |  |         |           |
|   |   | • Refer draft Structure Plan to Council seeking endorsement to advertise.<br>• Advertise draft Structure Plan for public comment.   | Apr – Jun 2016 |  |         |           |
|   | <b>Joondalup City Centre Development</b><br>Facilitate the development and construction of an integrated mixed use development on City owned land in the Joondalup City Centre. City Projects.  | • Continue, through the Memorandum of Understanding, exclusive negotiations with Devwest Group Pty Ltd to progress an integrated mixed development on Lot 507 Boas Avenue and Lot 496 Davidson Terrace, Joondalup.<br>• Seek Council endorsement of the Master Plan for Lot 507 Boas Avenue and Lot 496 Davidson Terrace, Joondalup.<br>• Continue the required actions to facilitate subdivision of the development site.<br>• Maintain liaison with State Government relating to the provision of office accommodation for a State Government Agency. | Jul – Sep 2015 | The City is currently developing the Joondalup City Centre Development Concept Plan, known as <i>Boas Place</i> in collaboration with Devwest Group Pty Ltd.<br><br>At its meeting held in July Council endorsed the draft Joondalup City Centre Heads of Agreement. Further amendments, as previously agreed to by the relevant parties, are currently being reviewed.<br><br>In June 2015 the City received a Request for Proposal for State Government Office Accommodation in the Joondalup City Centre. A detailed proposal was submitted to the State Government (through ACORRP, on behalf of the Department of Finance), as endorsed by Council on 28 July 2015. |         |           |



## QUALITY URBAN ENVIRONMENT

| Project | Milestone   | Target Quarter   | Comments   | On Time | On Budget |
|---------|---|--|--|---------|-----------|
|         | <ul style="list-style-type: none"> <li>Continue, through the Memorandum of Understanding, exclusive negotiations with Devwest Group Pty Ltd to progress an integrated mixed development on Lot 507 Boas Avenue and Lot 496 Davidson Terrace, Joondalup.</li> <li>Continue the required actions to facilitate subdivision of the development site.</li> <li>Maintain liaison with State Government relating to the provision of office accommodation for a State Government Agency.</li> </ul>   | Oct – Dec 2015   | <p>At its meeting held in December Council endorsed the amended Joondalup City Centre Heads of Agreement which was formally executed by the City and Devwest Group Pty Ltd on 21 December 2015.</p> <p>At the same meeting Council also endorsed a 12 month extension to the exclusivity period of the Memorandum of Understanding between the City and Devwest Group Pty Ltd.</p>   |         | ✓         |
|         |   | Jan – Mar 2016   |  |         |           |
|         |   | Apr – Jun 2016   |  |         |           |
|         | <b>Joondalup Performing Arts and Cultural Facility</b><br>Progress the development of a Performing Arts and Cultural Facility, including the development and construction of the Jinan Gardens, at Lot 1001 (3) Teakle Court, Joondalup.  | <ul style="list-style-type: none"> <li>Finalise negotiations with Devwest Group Pty Ltd as required by the Memorandum of Understanding.</li> <li>Maintain liaison with State Government relating to the provision of office accommodation for a State Government Agency.</li> </ul>  |  |         |           |
|         |   | <ul style="list-style-type: none"> <li>Seek endorsement of the Business Plan for the Joondalup City Centre Development.</li> <li>Prepare contract documents with Devwest Pty Ltd.</li> <li>Maintain liaison with State Government relating to the provision of office accommodation for a State Government Agency.</li> </ul>  |  |         |           |
|         |   | <ul style="list-style-type: none"> <li>Continue ongoing negotiations with key stakeholders (including State and Federal Government agencies) to determine opportunities for capital funding and/or other partnerships.</li> <li>Continue investigations into management options for the facility.</li> <li>Present draft business case for the Joondalup Performing Arts and Cultural Facility to Council for consideration.</li> <li>Seek Council endorsement of the reviewed conceptual design.</li> </ul> | <p>The City submitted a grant application to the Federal Government's National Stronger Regions Fund on 31 July 2015 for a grant towards the capital costs of the Performing Arts and Cultural Facility.</p> <p>The City maintained contact with the Department of Culture and the Arts and initiated contact with a commercial performing arts facility manager in regard to management options for the Joondalup Performing Arts and Cultural Facility.</p> <p>A draft business case for the Joondalup Performing Arts and Cultural Facility was presented to Council for consideration during the quarter.</p> <p>At its meeting held on 28 July 2015 Council considered a report on the conceptual design review and requested a further report outlining a strategy and costings for the next stage of the project.</p> |         |           |
|         | <ul style="list-style-type: none"> <li>Continue ongoing negotiations with key stakeholders (including State and Federal Government agencies) to determine opportunities for capital funding and/or other partnerships.</li> <li>Continue investigations into management options for the facility.</li> <li>Refine business case for the Joondalup Performing Arts and Cultural Facility as required.</li> <li>Subject to Council endorsement of the reviewed concept design, develop a detailed design for the Jinan Garden and Joondalup Performing Arts and Cultural Facility.</li> </ul> | Oct – Dec 2015   | <p>In December 2015 the City was advised that it was unsuccessful in its application to Round Two of the Federal Government's National Stronger Regions Fund for a grant towards the capital costs of the Performing Arts and Cultural Facility. At its meeting held on 15 December 2015 Council noted the City's intention to submit a new grant application to Round Three of the National Stronger Regions Fund.</p> <p>At its meeting held on 15 December 2015 Council noted a refined business case for the Joondalup Performing Arts and Cultural Facility and requested the progression of the project to the schematic design stage.</p>   |         | ✓         |



QUALITY URBAN ENVIRONMENT

|  | Project | Milestone  | Target Quarter | Comments | On Time | On Budget |
|--|---------|--|----------------|----------|---------|-----------|
|  |         | <ul style="list-style-type: none"><li>Continue ongoing negotiations with key stakeholders (including State and Federal Government agencies to determine opportunities for capital funding and/or other partnerships.</li><li>Continue investigations into management options for the facility.</li><li>Refine business case for the Joondalup Performing Arts and Cultural Facility as required.</li><li>Continue the development of the detailed design for the Jinan Garden and Joondalup Performing Arts and Cultural Facility.</li></ul> | Jan – Mar 2016 |          |         |           |
|  |         | <ul style="list-style-type: none"><li>Continue ongoing negotiations with key stakeholders (including State and Federal Government agencies to determine opportunities for capital funding and/or other partnerships.</li><li>Continue investigations into management options for the facility.</li><li>Refine business case for the Joondalup Performing Arts and Cultural Facility as required.</li><li>Continue the development of the detailed design for the Jinan Garden and Joondalup Performing Arts and Cultural Facility.</li></ul> | Apr – Jun 2016 |          |         |           |

## ECONOMIC PROSPERITY, VIBRANCY AND GROWTH

|   | Project   | Milestone  | Target Quarter | Comments   | On Time | On Budget |
|---|---|--|----------------|--|---------|-----------|
| <b>Objective:</b> For the Joondalup City Centre to be the first Strategic Metropolitan Centre in Western Australia to achieve Primary Centre status.              | <b>Developing Business Clusters – Innovation Precinct</b><br>Research and develop sectoral business cases and conduct marketing activities to promote Joondalup as a centre for knowledge and innovation.   | <ul style="list-style-type: none"> <li>Develop online research web portal (Stage 1 Knowledge/Innovation Precinct Proposal).</li> </ul>   | Jul – Sep 2015 | The development of an online research web portal commenced during the quarter. Testing on a prototype website has commenced. A Request for Quote for the development of the full website will be distributed in the second quarter of 2015-2016.   |         |           |
|   |   | <ul style="list-style-type: none"> <li>Develop online research web portal (Stage 1 Knowledge/Innovation Precinct Proposal).</li> <li>Develop website.</li> </ul>   | Oct – Dec 2015 | A Request for Quote was distributed and a preferred supplier commissioned during the quarter.<br>Development of the website commenced during the quarter.  |         | ✓         |
|   |   | <ul style="list-style-type: none"> <li>Finalise and launch website.</li> </ul>   | Jan – Mar 2016 |  |         |           |
|   |   | <ul style="list-style-type: none"> <li>Conduct marketing campaign.</li> </ul>  | Apr – Jun 2016 |  |         |           |
|   | <b>Investment Attraction</b><br>Research opportunities for potential investment and employment with key business sectors within the City, including: <ul style="list-style-type: none"> <li>Development of business cases for investment attraction;</li> <li>Development of marketing materials;</li> <li>Targeted campaigns to attract investment;</li> <li>Development of partnerships with key agencies and organisations for regional level activity; and</li> <li>Promotion of key development sites to attract strategic employers.</li> </ul> | <ul style="list-style-type: none"> <li>Distribute Investment Attraction Prospectus, Joondalup has the Edge, via mail out.</li> <li>Meet with Austrade representatives in Shanghai to discuss opportunities to promote Investment Attraction Prospectus.</li> </ul> | Jul – Sep 2015 | The City's <i>Investment Attraction Prospectus, Joondalup Has The Edge</i> was distributed to the City's key stakeholders in September. The Prospectus was also distributed to key government and business agencies, in both hard copy and electronic versions, during the City of Joondalup delegation to Shanghai and Jinan.<br><br>A meeting was held with Austrade representatives in Shanghai in September 2015 to discuss opportunities to promote the Investment Attraction Prospectus. |         |           |
|   |   | <ul style="list-style-type: none"> <li>Develop and distribute business cases and fact sheets for key business sectors.</li> <li>Develop online promotional campaigns.</li> </ul>   | Oct – Dec 2015 | Joondalup Has The Edge branded flash drives, containing the Investment Prospectus in English and Mandarin, the Economic Development Strategy and the Digital Strategy, were developed to enable these strategic documents to be easily circulated to stakeholders.<br><br>The investment attraction campaign was promoted as part of the City's Joondalup Business Online e-bulletin which was circulated during the quarter.  |         | ✓         |
|   |   | <ul style="list-style-type: none"> <li>Develop and distribute business cases and fact sheets for key business sectors.</li> <li>Develop online promotional campaigns.</li> </ul>   | Jan – Mar 2016 |  |         |           |
|   |   | <ul style="list-style-type: none"> <li>Develop and distribute business cases and fact sheets for key business sectors.</li> <li>Develop online promotional campaigns.</li> </ul>   | Apr – Jun 2016 |  |         |           |
|   | <b>Multi-Storey Car Park in Joondalup City Centre</b><br>Operate a multi-storey car park to support the future growth of Joondalup City Centre.   | <ul style="list-style-type: none"> <li>Commission car park and commence operation.</li> </ul>  | Jul – Sep 2015 | Construction of the Reid Promenade Multi Storey Car Park neared completion during the quarter. The carpark will commence operation in the second quarter of 2015-2016.   |         |           |
|   |   |  | Oct – Dec 2015 | Construction of the Reid Promenade Multi-storey Car Park was completed during the quarter and the car park opened for public use in December 2015.   |         | ✓         |
| <b>Objective:</b> To become a "Destination City" where unique tourism opportunities and activities provide drawcards for visitors and high amenity for residents. | <b>Tourism Promotion</b><br>Promote tourism within the City through: <ul style="list-style-type: none"> <li>Support for the development of a Sunset Coast Holiday Planner with Experience Perth; and</li> </ul>   | <ul style="list-style-type: none"> <li>Develop Sunset Coast Planner.</li> </ul>  | Oct – Dec 2015 | The Sunset Coast Holiday Planner was completed during the quarter and was made available on the City's website as an e-book.   |         | ✓         |
|   |   | <ul style="list-style-type: none"> <li>Distribute Sunset Coast Planner.</li> <li>Arrange the translation of tourism marketing information for the overseas markets.</li> </ul>   | Jan – Mar 2016 |  |         |           |

## ECONOMIC PROSPERITY, VIBRANCY AND GROWTH

| Project  | Milestone   | Target Quarter | Comments  | On Time | On Budget |
|--|---|----------------|---|---------|-----------|
| <ul style="list-style-type: none"> <li>Identification and development of proposals for new strategic marketing activity to promote tourism opportunities and events.</li> </ul>                                  | <ul style="list-style-type: none"> <li>Distribute tourism marketing information for the overseas markets.</li> </ul>  | Apr – Jun 2016 |   |         |           |
| <b>Significant Event Attraction</b><br>Identify and seek opportunities to attract significant events to the region.  | <ul style="list-style-type: none"> <li>Develop and maintain relationships with external event stakeholders.</li> <li>Investigate and progress potential significant major events to be held within the City.</li> <li>Develop tender documentation and receive submissions for the delivery of a significant event.</li> </ul>  | Jul – Sep 2015 | Progress continued on the development of a significant event including the name, brand, potential sponsorship and partnership opportunities for the event.<br><br>At its meeting held in August Council appointed Mellen Events to develop and manage a significant event to be held in the City in November 2016, 2017 and 2018.   |         |           |
|  | <ul style="list-style-type: none"> <li>Develop and maintain relationships with external event stakeholders.</li> <li>Investigate and progress potential significant major events to be held within the City.</li> </ul>   | Oct – Dec 2015 | Further progress continued on the development of a significant event including the name, branding and partnership opportunities. A consultant was engaged to develop the brand and visual identity of the event.<br><br>Meetings were held with key stakeholders, including a meeting with Tourism WA to discuss possible funding opportunities.  |         | ✓         |
|  | <ul style="list-style-type: none"> <li>Develop and maintain relationships with external event stakeholders.</li> <li>Investigate and progress potential significant major events to be held within the City.</li> </ul>   | Jan – Mar 2016 |   |         |           |
|  | <ul style="list-style-type: none"> <li>Develop and maintain relationships with external event stakeholders.</li> <li>Investigate and progress potential significant major events to be held within the City.</li> </ul>   | Apr – Jun 2016 |   |         |           |
|  |   |                |   |         |           |
| <b>Ocean Reef Marina – Business Case and Structure Plan</b><br>Develop and obtain approval for the Ocean Reef Marina Local Structure Plan and Business Case, and progress the Ocean Reef Marina to construction. | <ul style="list-style-type: none"> <li>Subject to the timelines agreed with the State Government agencies, progress the environmental approval and MRS Amendment initiation processes.</li> <li>Continue the preparation of the Local Structure Plan.</li> <li>Finalise the renewed and expanded Memorandum of Understanding with the State Government.</li> <li>Continue the preparation of the required Business Case/s (as identified).</li> </ul> | Jul – Sep 2015 | The City continued to undertake actions as requested by the Department of Planning and the Western Australian Planning Commission in accordance with the requirements of the Metropolitan Regional Scheme Amendment initiation.<br><br>The studies and actions required for the Public Environmental Review continued during the quarter in consultation with the relevant agencies.<br><br>Assessment of the draft Local Structure Plan continued.<br><br>At a reconvened meeting held on 15 September 2015 a confidential report on options for progressing the project were presented to the Ocean Reef Marina Committee.<br><br>Discussions with the State Government continued regarding the renewed and expanded Memorandum of Understanding. |         |           |

## ECONOMIC PROSPERITY, VIBRANCY AND GROWTH

|  | Project   | Milestone  | Target Quarter | Comments   | On Time | On Budget |
|--|---|--|----------------|--|---------|-----------|
|  |   | <ul style="list-style-type: none"> <li>Subject to the timelines agreed with the State Government agencies, progress the environmental approval and MRS Amendment initiation processes.</li> <li>Continue the preparation of the Local Structure Plan.</li> <li>Engage (through the Memorandum of Understanding) with the State Government to identify a development partner / proponent.</li> <li>Continue the preparation of the required Business Case/s (as identified).</li> </ul> | Oct – Dec 2015 | <p>At its meeting held in October Council requested the preparation and delivery of a public awareness communication campaign to take place during February 2016. Council also requested the Minister for Planning to initiate action for the State Government to assume the role of proponent for the Ocean Reef Marina project.</p> <p>In December 2015 the City was advised by the Minister for Planning that LandCorp has been directed to undertake a review of the Ocean Reef Marina concept plan and financial feasibility. The City and the Ocean Reef Marina Project Team has liaised with LandCorp with the review.</p> <p>The City continued to undertake actions as requested by the Department of Planning and the Western Australian Planning Commission in accordance with the requirements of the Metropolitan Regional Scheme Amendment initiation.</p> <p>The baseline studies required for the Public Environmental Review were completed and the impact assessments commenced in consultation with the relevant agencies.</p> <p>Assessment of the draft Local Structure Plan continued.</p> |         | ✓         |
|  |   | <ul style="list-style-type: none"> <li>Progress the assessment processes for the Public Environmental Review, MRS Amendment and Local Structure Plan in accordance with the timelines agreed with the State Government Agencies.</li> <li>Continue to engage (through the Memorandum of Understanding) with the State Government to identify a development partner / proponent.</li> <li>Continue the preparation of the required Business Case/s (as identified).</li> </ul>          | Jan – Mar 2016 |  |         |           |
|  |   | <ul style="list-style-type: none"> <li>Progress the assessment processes for the Public Environmental Review, MRS Amendment and Local Structure Plan in accordance with the timelines agreed with the State Government Agencies.</li> <li>Continue to engage (through the Memorandum of Understanding) with the State Government to identify a development partner / proponent.</li> <li>Continue the preparation of the required Business Case/s (as identified).</li> </ul>          | Apr – Jun 2016 |  |         |           |
|  | <b>Establishment of Cafés, Kiosks and Restaurants</b><br>Provide high quality, environmentally sustainable café, kiosk and restaurant facilities on identified sites owned and managed by the City. | <ul style="list-style-type: none"> <li>Negotiate an Agreement to Lease with the preferred respondent for the development of a facility at Pinnaroo Point.</li> <li>Seek Council endorsement of the Agreement to Lease with the preferred respondent for the development of a facility at Pinnaroo Point.</li> <li>Liaise with the relevant State Government departments regarding approvals for the development of a facility at Pinnaroo Point.</li> </ul>                            | Jul – Sep 2015 | <p>The City continued to negotiate an Agreement to Lease with the preferred respondent.</p> <p>At its meeting held on 28 July 2015 Council considered an interim report on the status of the negotiations with the preferred respondent. Council requested further negotiations with the preferred respondent in relation to a redesign of the proposed development.</p> <p>The City liaised with the Department of Lands on several occasions regarding land lease approvals for the development at Pinnaroo Point.</p>   |         |           |

## ECONOMIC PROSPERITY, VIBRANCY AND GROWTH

|  | Project   | Milestone  | Target Quarter | Comments   | On Time | On Budget |
|--|---|--|----------------|--|---------|-----------|
|  |   | <ul style="list-style-type: none"> <li>Liaise with the relevant State Government departments regarding approvals for the development of a facility at Pinnaroo Point.</li> <li>Progress lease arrangements for the development of a facility at Pinnaroo Point.</li> </ul>   | Oct – Dec 2015 | At its meeting held on 15 December Council endorsed the proposed concept by Rock (WA) Pty Ltd trading as White Salt and requested the commencement of negotiations on a draft land lease agreement with Rock (WA) Pty Ltd and a draft Crown Land lease agreement with the Department of Lands for the Pinnaroo Point Café/Kiosk Project.   |         | ✓         |
|  |   | <ul style="list-style-type: none"> <li>Progress the development of a facility at Pinnaroo Point.</li> </ul>  | Jan – Mar 2016 |  |         |           |
|  |   | <ul style="list-style-type: none"> <li>Progress the development of a facility at Pinnaroo Point.</li> </ul>  | Apr – Jun 2016 |  |         |           |
| <b>Objective:</b> To be immersed within a region that is complementary and supportive of broader strategic outcomes. | <b>Regional Economic Development</b><br>Support a regional approach to economic development activities through: <ul style="list-style-type: none"> <li>Implementation of a Regional Governance Framework for the North West Corridor in partnership with the City of Wanneroo and relevant State Government agencies.</li> <li>Progression of regional projects including small business support, tourism development, transport infrastructure, major projects and investment attraction.</li> <li>Engage with State Government Regional Development Australia (RDA) Perth and other stakeholders to progress the Perth and Peel Economic Development Strategy.</li> </ul> | <ul style="list-style-type: none"> <li>Conduct regular meetings/liaison with the City of Wanneroo.</li> <li>Engage with State Government to progress the Perth and Peel Economic Development Strategy.</li> </ul>  | Jul – Sep 2015 | Regular meetings were conducted with the City of Wanneroo during the quarter.<br><br>The City, along with other local governments in metropolitan Perth, has engaged with Regional Development Australia (RDA) to provide feedback on the draft Perth and Peel Economic Development Strategy and Priority Infrastructure Plan. RDA has been liaising with the Department of Planning to progress this project. |         |           |
|  |   | <ul style="list-style-type: none"> <li>Conduct regular meetings/liaison with the City of Wanneroo.</li> <li>Seek Council endorsement of the Regional Economic Development Framework.</li> <li>Progress projects in line with the Regional Economic Development Framework Implementation Plan.</li> <li>Engage with State Government to progress the Perth and Peel Economic Development Strategy.</li> </ul> | Oct – Dec 2015 | Regular meetings were conducted with the City of Wanneroo during the quarter.<br><br>The City of Wanneroo will consider the Regional Economic Development Framework following endorsement of its local Economic Development Strategy, scheduled for 2016.<br><br>The City is awaiting delivery of a final version of the Perth and Peel Economic Development Strategy and Priority Infrastructure Plan.        |         | ✓         |
|  |   | <ul style="list-style-type: none"> <li>Conduct regular meetings/liaison with the City of Wanneroo.</li> <li>Progress projects in line with the Regional Economic Development Framework Implementation Plan.</li> <li>Engage with State Government to progress the Perth and Peel Economic Development Strategy.</li> </ul>   | Jan – Mar 2016 |  |         |           |
|  |   | <ul style="list-style-type: none"> <li>Conduct regular meetings/liaison with the City of Wanneroo.</li> <li>Progress projects in line with the Regional Economic Development Framework Implementation Plan.</li> <li>Engage with State Government to progress the Perth and Peel Economic Development Strategy.</li> </ul>   | Apr – Jun 2016 |  |         |           |
|  | <b>Economic Development Strategy</b><br>Implement new Economic Development Strategy to provide strategic direction for the promotion of economic and employment   | <ul style="list-style-type: none"> <li>Present progress report on previous year's achievements to Elected Members against the Economic Development Plan.</li> <li>Develop 2015-2016 Implementation Schedule.</li> </ul>  | Jul – Sep 2015 | A progress report on previous year's achievements has been developed and will be presented to Elected Members in the second quarter.<br><br>The development of the 2015-2016 Implementation Schedule continued during the quarter.   |         |           |



## ECONOMIC PROSPERITY, VIBRANCY AND GROWTH

|   | Project  | Milestone  | Target Quarter | Comments  | On Time | On Budget |
|---|--|--|----------------|---|---------|-----------|
|   | growth within the City.  | <ul style="list-style-type: none"> <li>Implement actions from the Implementation Schedule.</li> </ul>  | Oct – Dec 2015 | <p>An Economic Development Strategy progress report was finalised and will be presented to Elected Members in the third quarter.</p> <p>Key projects progressed during the quarter included:</p> <ul style="list-style-type: none"> <li>The development of the Virtual Innovation Precinct website;</li> <li>The distribution of the Sunset Coast Holiday Planner; and</li> <li>The launch of the <i>Cyber Check Me</i> Project.</li> </ul> |         | ✓         |
|   |  | <ul style="list-style-type: none"> <li>Implement actions from the Implementation Schedule.</li> </ul>  | Jan – Mar 2016 |   |         |           |
|   |  | <ul style="list-style-type: none"> <li>Implement actions from the Implementation Schedule.</li> </ul>  | Apr – Jun 2016 |   |         |           |
| <b>Objective:</b> For the City's business community to have the technology and communication capability necessary to thrive within a competitive environment. Actively seek opportunities for improving local communication network infrastructure. | <b>Digital Strategy</b><br>Implement actions from the City's Digital Strategy, digital marketing activities and support for digital initiatives such as NBN roll-out within the City for local businesses and the community. | <ul style="list-style-type: none"> <li>Support digital projects and initiatives within the City.</li> <li>Develop and implement digital marketing activities.</li> </ul>   | Jul – Sep 2015 | The City has assisted the ECU Cyber Security Institute to develop a program that will assist businesses and consumers with cyber security issues.   |         |           |
|   |  | <ul style="list-style-type: none"> <li>Support digital projects and initiatives within the City.</li> <li>Develop and implement digital marketing activities.</li> </ul>   | Oct – Dec 2015 | The City collaborated with the ECU Cyber Security Research Institute to launch its <i>Cyber Check.Me</i> project during the quarter. Details on the project are promoted on the City's website.   |         | ✓         |
|   |  | <ul style="list-style-type: none"> <li>Support digital projects and initiatives within the City.</li> <li>Develop and implement digital marketing activities.</li> </ul>   | Jan – Mar 2016 |   |         |           |
|   |  | <ul style="list-style-type: none"> <li>Support digital projects and initiatives within the City.</li> <li>Develop and implement digital marketing activities.</li> </ul>   | Apr – Jun 2016 |   |         |           |
|   | <b>Business Engagement and Communication</b><br>Engage with the Business community to promote development opportunities in the City, regional economic initiatives and strategic business issues.                            | <ul style="list-style-type: none"> <li>Publish quarterly Online Business e-bulletin.</li> <li>Support and attend partner and industry events.</li> </ul>   | Jul – Sep 2015 | <p>There was no online e-bulletin published this quarter. The next e-bulletin will be distributed in the second quarter. There will still be four e-bulletins published in the year.</p> <p>City representatives attended and promoted partner and industry events including Enterprise Tuesday at Edith Cowan University and a breakfast briefing with the Minister of Trade in Shanghai.</p>  |         |           |
|   |  | <ul style="list-style-type: none"> <li>Publish quarterly Online Business e-bulletin.</li> <li>Publish bi-annual Business Edge Newsletter.</li> <li>Support and attend partner and industry events.</li> </ul>                                    | Oct – Dec 2015 | <p>The City's Joondalup Business Online e-bulletin was distributed during the quarter.</p> <p>The Business Edge newsletter was finalised and published on the City's website.</p> <p>City representatives attended and promoted partner and industry events during the quarter including the Department of Commerce Innovator of the Year Awards as well as events held at sixty27 and Edith Cowan University.</p>                          |         | ✓         |
|   |  | <ul style="list-style-type: none"> <li>Publish quarterly Online Business e-bulletin.</li> <li>Deliver Business Forum 1.</li> <li>Support and attend partner and industry events.</li> </ul>  | Jan – Mar 2016 |   |         |           |
|   |  | <ul style="list-style-type: none"> <li>Publish quarterly Online Business e-bulletin.</li> <li>Publish bi-annual Business Edge Newsletter.</li> <li>Deliver Business Forum 2.</li> <li>Support and attend partner and industry events.</li> </ul> | Apr – Jun 2016 |   |         |           |
|   |  |  |                |   |         |           |
|   |  |  |                |   |         |           |

## ECONOMIC PROSPERITY, VIBRANCY AND GROWTH

|   | Project   | Milestone   | Target Quarter | Comments  | On Time | On Budget |
|---|---|---|----------------|---|---------|-----------|
| <b>Objective:</b> For the City's business community to have the technology and communication capability necessary to thrive within a competitive environment. | <b>Business Growth and Innovation – sixty27</b><br>Partner with West Coast Institute (WCI) in the delivery and ongoing development and promotion of the WCI Co-Working Space located on the WCI campus.   | <ul style="list-style-type: none"> <li>Receive and review annual progress report on 2014-2015 activities from West Coast Institute.</li> <li>Receive Service Delivery Plan for 2015-2016.</li> <li>Conduct quarterly meetings with West Coast Institute to monitor progress of Co-Working Space.</li> </ul> | Jul – Sep 2015 | An annual progress report for 2014-2015 and a new 2015-2016 Annual Service Delivery Plan was received by the City.<br>Regular meetings occurred with West Coast Institute during the quarter to discuss the progress of sixty27.                  |         |           |
|   |   | <ul style="list-style-type: none"> <li>Conduct quarterly meetings with West Coast Institute to monitor progress of Co-Working Space.</li> </ul>   | Oct – Dec 2015 | Meetings were held with sixty27 to progress events and discuss promotion and operation of the expanded co-working space.  |         | ✓         |
|   |   | <ul style="list-style-type: none"> <li>Conduct quarterly meetings with West Coast Institute to monitor progress of Co-Working Space.</li> </ul>   | Jan – Mar 2016 |   |         |           |
|   |   | <ul style="list-style-type: none"> <li>Conduct quarterly meetings with West Coast Institute to monitor progress of Co-Working Space.</li> </ul>   | Apr – Jun 2016 |   |         |           |
|   | <b>Business Growth and Innovation – Edith Cowan University Business Innovation Centre (ECUBIC)</b><br>Support the operation of the ECU Business and Innovation Centre through the membership of the Board of Management and attendance at Board Meetings. | <ul style="list-style-type: none"> <li>Attend Board of Management Meetings quarterly.</li> <li>Meet with the Management Entity on a regular basis to discuss opportunities for collaboration.</li> </ul>  | Jul – Sep 2015 | City representatives attended the ECUBIC Advisory Committee Meeting during the quarter.<br>A number of meetings were held during the quarter with Business Station, the management entity of ECUBIC, to progress economic development matters.    |         |           |
|   |   | <ul style="list-style-type: none"> <li>Attend Board of Management Meetings quarterly.</li> <li>Meet with the Management Entity on a regular basis to discuss opportunities for collaboration.</li> </ul>  | Oct – Dec 2015 | City representatives attended two ECUBIC Advisory Committee meetings during the quarter.<br>The City met with Business Station representatives, the management entity of ECUBIC, to progress economic development initiatives during the quarter. |         | ✓         |
|   |   | <ul style="list-style-type: none"> <li>Attend Board of Management Meetings quarterly.</li> <li>Meet with the Management Entity on a regular basis to discuss opportunities for collaboration.</li> </ul>  | Jan – Mar 2016 |   |         |           |
|   |   | <ul style="list-style-type: none"> <li>Attend Board of Management Meetings quarterly.</li> <li>Meet with the Management Entity on a regular basis to discuss opportunities for collaboration.</li> </ul>  | Apr – Jun 2016 |   |         |           |

## THE NATURAL ENVIRONMENT

|  | Project   | Milestone  | Target Quarter | Comments   | On Time | On Budget |
|--|---|--|----------------|--|---------|-----------|
| <b>Objective:</b> to continually adapt to changing local environmental conditions. | <b>Environment Plan 2014-2019</b><br>Implement the Environment Plan to provide strategic direction in the delivery of environmental initiatives within the City.  | <ul style="list-style-type: none"> <li>Present progress report to Elected Members against Environment Plan.</li> <li>Implement actions from the Environment Plan.</li> </ul> | Jul – Sep 2015 | Information relating to the progress made in implementing the Environment Plan has been compiled and will be presented to Elected Members in the second quarter.<br><br>Implementation of the Environment Plan continued during the quarter including: <ul style="list-style-type: none"> <li>The continued development of the Natural Areas Management Plans;</li> <li>The continued implementation of the Yellagonga Catchment Management Plan; and</li> <li>A review of the City Water Plan.</li> </ul> |         |           |
|  |   | <ul style="list-style-type: none"> <li>Implement actions from the Environment Plan.</li> </ul>   | Oct – Dec 2015 | A progress report against the actions within the Environment Plan was presented to Elected Members during the quarter.<br><br>Implementation of the Environment Plan continued during the quarter including: <ul style="list-style-type: none"> <li>The continued development of the Natural Areas Management Plans;</li> <li>The continued implementation of the Yellagonga Catchment Management Plan and the Climate Change Strategy; and</li> <li>A review of the Pathogen Management Plan.</li> </ul>  |         | ✓         |
|  |   | <ul style="list-style-type: none"> <li>Implement actions from the Environment Plan.</li> </ul>   | Jan – Mar 2016 |  |         |           |
|  |   | <ul style="list-style-type: none"> <li>Implement actions from the Environment Plan.</li> </ul>   | Apr – Jun 2016 |  |         |           |
|  | <b>Yellagonga Integrated Catchment Management (YICM) Plan 2015-2019</b><br>Finalise development of the YICM Plan and commence implementation of projects in partnership with the City of Wanneroo and the Department of Parks and Wildlife. | <ul style="list-style-type: none"> <li>Implement projects from the YICM Plan.</li> </ul>   | Jul – Sep 2015 | Implementation of initiatives within the Yellagonga Integrated Catchment Management Plan continued during the quarter. Key projects that have been progressed include: <ul style="list-style-type: none"> <li>The Water Quality Monitoring and Improvement Program;</li> <li>The Yellagonga Ecotourism and Community Awareness Program; and</li> <li>Stormwater management.</li> </ul>   |         |           |
|  |   | <ul style="list-style-type: none"> <li>Implement projects from the YICM Plan.</li> </ul>   | Oct – Dec 2015 | Implementation of initiatives within the Yellagonga Integrated Catchment Management Plan continued during the quarter. Key projects that have been progressed include: <ul style="list-style-type: none"> <li>The Water Quality Monitoring and Improvement Program;</li> <li>The Yellagonga Fauna Awareness Program;</li> <li>The Water Conservation Project; and</li> <li>The Local Biodiversity Project.</li> </ul>  |         | ✓         |
|  |   | <ul style="list-style-type: none"> <li>Implement projects from the YICM Plan.</li> </ul>   | Jan – Mar 2016 |  |         |           |
|  |   | <ul style="list-style-type: none"> <li>Implement projects from the YICM Plan.</li> <li>Present progress report to Elected Members against YICM Plan.</li> </ul>              | Apr – Jun 2016 |  |         |           |

## THE NATURAL ENVIRONMENT

| Project  | Milestone   | Target Quarter | Comments  | On Time | On Budget |
|--|---|----------------|---|---------|-----------|
| <b>Climate Change Strategy Implementation</b><br>Implement the strategy to address climate change mitigation and adaptation across the organisation and the community to build resilience against the impacts of climate change. | <ul style="list-style-type: none"> <li>Present progress report to Elected Members on the Climate Change Strategy.</li> <li>Undertake actions in line with the Climate Change Strategy.</li> </ul>                         | Jul – Sep 2015 | <p>A report on the progress of the Climate Change Strategy was developed and will be presented to Elected Members in the second quarter of 2015-2016.</p> <p>The implementation of actions in line with the Climate Change Strategy continued during the quarter including:</p> <ul style="list-style-type: none"> <li>A presentation to Elected Members on the City's proposed approach for addressing coastal vulnerability and coastal adaptation; and</li> <li>Planning for the delivery of the Coastal Monitoring Program.</li> </ul>  |         |           |
|  | <ul style="list-style-type: none"> <li>Undertake actions in line with the Climate Change Strategy.</li> </ul>   | Oct – Dec 2015 | <p>A report on the progress of the Climate Change Strategy was provided to Elected Members during the quarter.</p> <p>The implementation of actions in line with the Climate Change Strategy continued during the quarter including:</p> <ul style="list-style-type: none"> <li>The continued planning for the delivery of the Coastal Monitoring Program;</li> <li>The continued planning for the development of the Coastal Infrastructure Adaptation Plan; and</li> <li>Liaison with ICLEI Global Secretariat regarding the City's participation in the Compact of Mayor's Program.</li> </ul> |         | ✓         |
|  | <ul style="list-style-type: none"> <li>Undertake actions in line with the Climate Change Strategy.</li> </ul>   | Jan – Mar 2016 |   |         |           |
|  | <ul style="list-style-type: none"> <li>Undertake actions in line with the Climate Change Strategy.</li> </ul>   | Apr – Jun 2016 |   |         |           |
|  | <b>Coastal Adaptation Planning and Implementation Project</b><br>Integrate coastal vulnerability and coastal adaptation into City policies, planning and maintenance schedules and Capital Works Programs where relevant. | Jul – Sep 2015 | <p>A presentation on the City's proposed approach for addressing coastal vulnerability and coastal adaptation was provided to Elected Members on 29 September 2015.</p> <p>The development of the draft Coastal Notification and Adaptation Local Planning Policy was completed during the quarter.</p>   |         |           |
|  |   | Oct – Dec 2015 | The presentation of the draft Coastal Policy to the Policy Committee has been delayed until further coastal assessments have been completed in the third quarter.   |         | ✓         |
|  |   | Jan – Mar 2016 |   |         |           |
|  |   | Apr – Jun 2016 |   |         |           |
|  | <b>Weed Management Plan</b><br>Develop and implement the Weed Management Plan to provide an ongoing strategic approach to the management of natural areas in order to reduce the  | Jul – Sep 2015 | The development of a briefing paper was undertaken during the quarter and will be distributed to Elected Members in the second quarter.   |         |           |
|  |   | Oct – Dec 2015 | The briefing paper was finalised during the quarter and supplementary information relating to community engagement was prepared. It is anticipated that this information will be distributed to Elected Members in the third quarter.   |         | ✓         |

## THE NATURAL ENVIRONMENT

|  | Project   | Milestone   | Target Quarter | Comments   | On Time | On Budget |
|--|---|---|----------------|--|---------|-----------|
|  | incidence of weeds.   | <ul style="list-style-type: none"><li>Present draft Plan to Council seeking consent to conduct targeted consultation.</li></ul>   | Jan – Mar 2016 |  |         |           |
|  |   | <ul style="list-style-type: none"><li>Conduct targeted consultation.</li><li>Present draft Plan to Council seeking endorsement.</li><li>Implement actions from the Weed Management Plan.</li></ul>        | Apr – Jun 2016 |  |         |           |
|  | <b>Pathogen Management Plan</b><br>Implement the Pathogen Management Plan to reduce the risk of introducing and spreading pathogens by establishing the level of risk within vegetated areas of the City.           | <ul style="list-style-type: none"><li>Implement actions from the Pathogen Management Plan.</li></ul>  | Jul – Sep 2015 | The implementation of actions from the Pathogen Management Plan continued during the quarter including: <ul style="list-style-type: none"><li>The continuation of the Pathogen Mapping and Sampling Project;</li><li>The implementation of pathogen control stations; and</li><li>The implementation of the Pathogen Signage Project.</li></ul>  |         |           |
|  |   | <ul style="list-style-type: none"><li>Implement actions from the Pathogen Management Plan.</li></ul>  | Oct – Dec 2015 | The implementation of actions from the Pathogen Management Plan continued during the quarter including: <ul style="list-style-type: none"><li>The continuation of the Pathogen Mapping and Sampling Project;</li><li>Securing funding for the installation of pathogen control stations through the State National Resource Management Funding Program; and</li><li>The implementation of the staff training programs.</li></ul> |         | ✓         |
|  |   | <ul style="list-style-type: none"><li>Implement actions from the Pathogen Management Plan.</li></ul>  | Jan – Mar 2016 |  |         |           |
|  |   | <ul style="list-style-type: none"><li>Implement actions from the Pathogen Management Plan.</li><li>Commence development of new Pathogen Management Plan.</li></ul>  | Apr – Jun 2016 |  |         |           |
|  | <b>Bushland Fire Management Plan</b><br>Develop and implement a Bushland Fire Management Plan to provide an ongoing strategic approach to the management of natural areas in order to reduce the incidence of fire. | <ul style="list-style-type: none"><li>Develop draft Bushland Fire Management Plan.</li></ul>  | Jul – Sep 2015 | The development of a draft <i>Bushland Fire Management Plan</i> commenced during the quarter.  |         |           |
|  |   | <ul style="list-style-type: none"><li>Continue development of a draft Bushland Fire Management Plan.</li></ul>  | Oct – Dec 2015 | The development of the draft Bushfire Management Plan continued during the quarter with a presentation being provided to the City by the Department of Fire and Emergency Services regarding the local government fire risk planning and management framework.   |         | ✓         |
|  |   | <ul style="list-style-type: none"><li>Present draft Bushland Fire Management Plan to Council seeking consent to undertake stakeholder consultation.</li><li>Undertake stakeholder consultation.</li></ul> | Jan – Mar 2016 |  |         |           |
|  |   | <ul style="list-style-type: none"><li>Finalise the draft Bushland Fire Management Plan.</li><li>Present report to Council seeking endorsement of the Bushland Fire Management Plan.</li></ul>             | Apr – Jun 2016 |  |         |           |
|  | <b>Whitfords Nodes Foreshore Bushland Management Plan</b><br>Develop a Management Plan for Whitfords Nodes, Hillarys, for the environmental   | <ul style="list-style-type: none"><li>Undertake Flora and Fauna Study.</li></ul>  | Jul – Sep 2015 | An environmental consultant has been engaged to undertake a Flora, Fauna And Fungi Survey of the Kallaroo and Hillarys Foreshore. Field work will commence in October 2015.  |         |           |
|  |   | <ul style="list-style-type: none"><li>Complete Flora and Fauna Study.</li></ul>   | Oct – Dec 2015 | A Flora, Fauna and Fungi Survey was completed during the quarter.  |         | ✓         |



## THE NATURAL ENVIRONMENT

|   | Project  | Milestone  | Target Quarter | Comments  | On Time | On Budget |
|---|--|--|----------------|---|---------|-----------|
|   | management of the coastal foreshore area.  | • Develop draft Management Plan.   | Jan – Mar 2016 |   |         |           |
|   |  | • Present draft Management Plan to Council seeking endorsement.                  | Apr – Jun 2016 |   |         |           |
|   | <b>Sorrento Foreshore Bushland Reserve Management Plan</b>   | • Finalise draft Management Plan.  | Jul – Sep 2015 | The development a draft <i>Sorrento Foreshore Bushland Reserve Management Plan</i> was completed during the quarter.  |         |           |
|   | Finalise Sorrento Foreshore Bushland Reserve Management Plan for the environmental management of the coastal foreshore area.                                   | • Present report to Council seeking endorsement of draft Plan.                   | Oct – Dec 2015 | The draft <i>Sorrento Foreshore Bushland Reserve Management Plan</i> was completed and endorsed by Council at its meeting held on 15 December 2015.   |         | ✓         |
|   |  | • Implement actions in line with the Plan.                                       | Jan – Mar 2016 |   |         |           |
|   |  | • Implement actions in line with the Plan.                                       | Apr – Jun 2016 |   |         |           |
|   | <b>Shepherd's Bush Natural Area Management Plan</b>  | • Commence development of Plan.  | Jul – Sep 2015 | The development of the Shepherd's Bush Management Plan commenced during the quarter with consultants being appointed to undertake a Flora, Fauna and Fungi Survey in October.   |         |           |
|   | Develop Natural Area Management Plans for Shepherd's Bushland, Kingsley, for the environmental management of the bushland area.                                | • Continue development of Plan.  | Oct – Dec 2015 | The Flora, Fauna and Fungi Surveys were completed during this quarter. The City is awaiting the final consultant's report outlining the findings of the surveys. The development of the draft Management Plan continued during the quarter. |         | ✓         |
|   |  | • Present Plan to Council seeking endorsement to conduct community consultation. | Jan – Mar 2016 |   |         |           |
|   |  | • Conduct consultation.  |                |   |         |           |
|   |  | • Present Plan to Council seeking endorsement.                                   | Apr – Jun 2016 |   |         |           |
|   | <b>Landscape Master Plan 2009-2019 Eco-Zoning and Hydro-Zoning in Parks</b>  | • Develop and advertise irrigation tender documentation.                         | Jul – Sep 2015 | The development of irrigation tender documentation was completed and advertised during the quarter. Community consultation was also undertaken during the quarter.  |         |           |
|   | Design and implement principles of eco-zoning and hydro-zoning in James Cook Park, Hillarys, to increase water efficiency and install new park infrastructure. | • Conduct community consultation.  | Oct – Dec 2015 | Community consultation was conducted in the previous quarter. The irrigation tender was awarded during the quarter.   |         | ✓         |
|   |  | • Award irrigation tender.   |                |   |         |           |
|   |  | • Commence works.  | Jan – Mar 2016 |   |         |           |
|   |  | • Complete works.  | Apr – Jun 2016 |   |         |           |
| <b>Objective:</b> To build a community that takes ownership of its natural assets | <b>Think Green Program</b><br>Implement the Think Green Program to raise community awareness on the City's   | • Develop Project Plan for 2015-2016 Think Green activities.                     | Jul – Sep 2015 | A Project Plan and schedule for the Think Green Environmental Education Program for 2015-2016 was completed during the quarter. A Food Gardens Workshop was delivered on 30 September at the Fleur Freame Pavilion, Padbury.                |         |           |

## THE NATURAL ENVIRONMENT

|   | Project  | Milestone   | Target Quarter | Comments  | On Time | On Budget |
|---|--|---|----------------|---|---------|-----------|
| and supports their ongoing preservation and conservation. | Renewable Energy Program, Waste Education Program and Environmental Education Program.   | <ul style="list-style-type: none"> <li>Implement initiatives in accordance with the approved Project Plan.</li> </ul>   | Oct – Dec 2015 | Delivery of environmental community activities continued during the quarter with the following events being held: <ul style="list-style-type: none"> <li>A Bird Watching Tour in October; and</li> <li>Night Stalk Tours in October and November.</li> </ul> Planning for the delivery of future events continued during the quarter. |         | ✓         |
|   |  | <ul style="list-style-type: none"> <li>Implement initiatives in accordance with the approved Project Plan.</li> </ul>   | Jan – Mar 2016 |   |         |           |
|   |  | <ul style="list-style-type: none"> <li>Implement initiatives in accordance with the approved Project Plan.</li> </ul>   | Apr – Jun 2016 |   |         |           |
|   | <b>Waste Management Plan 2015-2020</b><br>Develop a new Waste Management Plan 2015-2020 to provide guidance on the City's waste management operations over the next three years.   | <ul style="list-style-type: none"> <li>Present draft Waste Management Plan to Strategic Community Reference Group for review.</li> </ul>  | Jul – Sep 2015 | The draft Waste Management Plan was presented to the Strategic Community Reference Group for review on 23 September 2015.   |         |           |
|   |  | <ul style="list-style-type: none"> <li>Finalise draft Plan.</li> <li>Present report to Council seeking endorsement to conduct community consultation on the draft Plan.</li> </ul>  | Oct – Dec 2015 | Council endorsed the draft Waste Management Plan for the purpose of community consultation at its meeting held in November<br>Community consultation was completed during the quarter.  |         | ✓         |
|   |  | <ul style="list-style-type: none"> <li>Conduct community consultation.</li> </ul>   | Jan – Mar 2016 |   |         |           |
|   |  | <ul style="list-style-type: none"> <li>Finalise draft Plan.</li> <li>Present Plan to Council seeking endorsement.</li> </ul>  | Apr – Jun 2016 |   |         |           |
|   | <b>Bulk Refuse Collection</b><br>Implement new service for collection of bulk waste.   | <ul style="list-style-type: none"> <li>Present report to Elected Members on the results of the Bulk Waste Perception Survey.</li> </ul>   | Jul – Sep 2015 | The results of the Bulk Waste Perception Survey are currently being compiled and will be presented to Elected Members in the second quarter of 2015-2016.   |         |           |
|   |  | <ul style="list-style-type: none"> <li>Develop tender documentation and advertise tender.</li> </ul>  | Oct – Dec 2015 | Results of Bulk Waste Perception Survey were presented to Elected Members during the quarter.<br>A further report will be presented to Council in in the third quarter.   |         | ✓         |
|   |  | <ul style="list-style-type: none"> <li>Present report to Council seeking endorsement of preferred tender.</li> </ul>  | Jan – Mar 2016 |   |         |           |
|   |  | <ul style="list-style-type: none"> <li>Award tender.</li> <li>Inform community of service changes.</li> <li>Plan for the implementation of new service.</li> </ul>  | Apr – Jun 2016 |   |         |           |
|   | <b>Adopt a Coastline Project</b><br>Administer and assist with the implementation of the Adopt a Coastline Project, in partnership with local schools, to provide school students with the opportunity to participate in dune re-vegetation and improve the local environment. | <ul style="list-style-type: none"> <li>Exhibit displays of the work of individual schools developed as part of the Adopt a Coastline Project from the previous year.</li> <li>Present Recognition Awards to participating schools.</li> </ul> | Jul – Sep 2015 | Artwork from the Adopt a Coastline Project was displayed at the Joondalup Library between 6 July and 3 August.<br>Presentations of Recognition Awards were made to students from West Greenwood, Sorrento, and Mullaloo Heights Primary Schools.  |         |           |
|   |  | <ul style="list-style-type: none"> <li>Commence planning for the 2015-2016 Adopt a Coastline Project.</li> </ul>  | Oct – Dec 2015 | Planning has commenced for the 2015-2016 Adopt a Coastline Project.   |         | ✓         |
|   |  | <ul style="list-style-type: none"> <li>Invite applications from schools and inform successful schools.</li> </ul>   | Jan – Mar 2016 |   |         |           |

## THE NATURAL ENVIRONMENT

|   | Project   | Milestone   | Target Quarter | Comments  | On Time | On Budget |
|---|---|---|----------------|---|---------|-----------|
|   |   | <ul style="list-style-type: none"> <li>Deliver Adopt a Coastline Program in conjunction with schools.</li> </ul>  | Apr – Jun 2016 |   |         |           |
|   | <b>Friends' Group Activities</b><br>Provide technical support to Friends' Groups in accordance with the Friends' Group Manual.  | <ul style="list-style-type: none"> <li>Update Friends' Group Page on the City's website as required.</li> <li>Undertake actions as per agreed 2015-2016 work plan for each Friends' Group.</li> <li>Publish quarterly Friends' Group Newsletter</li> </ul>  | Jul – Sep 2015 | Updates to contact details on the Friends' Group Page on the City's website were completed.<br><br>The following actions were undertaken as agreed in the 2015-2016 work plan: <ul style="list-style-type: none"> <li>Native plants provided to Friends' Groups; and</li> <li>Assistance provided to Friends' Groups in relation to public planting and weeding days.</li> </ul> The winter edition of the Friends' Group Newsletter was published and distributed during the quarter.  |         |           |
|   |   | <ul style="list-style-type: none"> <li>Update Friends' Group Page on the City's website as required.</li> <li>Undertake actions as per agreed 2015-2016 work plan for each Friends' Group.</li> <li>Publish quarterly Friends' Group Newsletter.</li> </ul>   | Oct – Dec 2015 | Updates to contact details on the Friends' Group Page on the City's website were completed.<br><br>The following actions were undertaken as agreed in the 2015-2016 work plan: <ul style="list-style-type: none"> <li>On site meetings held with all Friends' Groups;</li> <li>Assistance provided to Groups to prepare and submit grant applications;</li> <li>Watering provided for native species planting conducted in the Winter/Spring season; and</li> <li>The establishment of a new group called the Friends of Craigie Bushland.</li> </ul> The Spring edition of the Friends' Group Newsletter was published and distributed during the quarter. |         | ✓         |
|   |   | <ul style="list-style-type: none"> <li>Update Friends' Group Page on the City's website as required.</li> <li>Undertake actions as per agreed 2015-2016 Work Plan for each Friends' Group.</li> <li>Publish quarterly Friends' Group Newsletter.</li> <li>Develop Friends' Group work plans and schedules for 2016-2017.</li> </ul> | Jan – Mar 2016 |   |         |           |
|   |   | <ul style="list-style-type: none"> <li>Update Friends' Group Page on the City's website as required.</li> <li>Undertake actions as per agreed 2015-2016 Work Plan for each Friends' Group.</li> <li>Publish quarterly Friends' Group Newsletter.</li> </ul>   | Apr – Jun 2016 |   |         |           |
|   |   |   |                |   |         |           |
| <b>Objective:</b> To develop an appreciation for local natural assets by providing appropriate access to natural areas. | <b>Beach Management Plan</b><br>Implement actions contained in the Beach Management Action Plan to guide the use, enjoyment, maintenance, preservation and appropriate development of the lands that are covered by the Plan. | <ul style="list-style-type: none"> <li>Present report to Council on access to the animal exercise area in Hillarys.</li> </ul>  | Oct – Dec 2015 | A report on the animal exercise area will be presented to Elected Members in the third quarter as part of the Beach Management Plan Review.   |         | ✓         |
|   |   | <ul style="list-style-type: none"> <li>Present report to Elected Members on the outcomes of the Beach Management Plan Review.</li> </ul>  | Jan – Mar 2016 |   |         |           |
|   |   | <ul style="list-style-type: none"> <li>Finalise the review of the Beach Management Plan and present to Council seeking endorsement.</li> </ul>  | Apr – Jun 2016 |   |         |           |

THE NATURAL ENVIRONMENT

|   | Project   | Milestone   | Target Quarter | Comments  | On Time | On Budget |
|---|---|---|----------------|---|---------|-----------|
| <b>Objective:</b> To embrace learning opportunities on an international scale and continuously lead by example in our application of new knowledge. | <b>City Water Plan</b><br>Implement the City Water Plan 2012-2015 to provide strategic direction in the delivery of water conservation and water quality improvement initiatives within the City and develop new City Water Plan 2016-2021. | <ul style="list-style-type: none"><li>Implement actions from the City Water Plan 2012-2015.</li><li>Undertake a review of the City Water Plan 2012-2015.</li><li>Present progress report to Elected Members against the City Water Plan 2012-2015.</li><li>Commence development of the City Water Plan 2016-2021.</li></ul> | Jul – Sep 2015 | The implementation of the current City Water Plan continued during the quarter.<br>A review of the City Water Plan 2012-2015 has been undertaken.<br>A report on the progress of actions against the City Water Plan 2012-2015 will be provided to Elected Members in the second quarter.<br>Development of the new City Water Plan 2016-2021 commenced during the quarter. |         |           |
|   |   | <ul style="list-style-type: none"><li>Implement actions from the City Water Plan2012-2015.</li><li>Continue development of the City Water Plan 2016-2021.</li></ul>   | Oct – Dec 2015 | Information regarding the progress of actions against the City Water Plan 2012-2015 was provided to Elected Members during the quarter.<br>Planning for the development of the City’s new Water Plan continued during the quarter.  |         | ✓         |
|   |   | <ul style="list-style-type: none"><li>Implement actions from the City Water Plan2012-2015.</li><li>Present draft City Water Plan 2016-2021 to Council seeking endorsement to release for public consultation.</li></ul>   | Jan – Mar 2016 |   |         |           |
|   |   | <ul style="list-style-type: none"><li>Present draft City Water Plan 2016-2021 to Council seeking endorsement.</li></ul>   | Apr – Jun 2016 |   |         |           |
|   |   |   |                |   |         |           |

## COMMUNITY WELLBEING

|  | Project   | Milestone  | Target Quarter | Comments   | On Time | On Budget |
|--|---|--|----------------|--|---------|-----------|
| <b>Objective:</b> To provide facilities of the highest quality which reflect the needs of the community now and into the future. | <b>Warwick Community Centre Master Plan</b><br>Investigate options for the design and construction of a multi-purpose community centre in Warwick to replace existing facilities on three sites within the Warwick Activity Centre for construction in 2016-2017 and 2017-2018. | <ul style="list-style-type: none"> <li>Engage consultants to review facility and landholding requirements.</li> </ul>                | Jul – Sep 2015 | Recent communications with landowners have indicated an intention to further progress developments within the Warwick Activity Centre site. As a result, the City will now finalise the project scope and seek to engage consultants in the second quarter of 2015-2016 to progress the project.   |         |           |
|  |   | <ul style="list-style-type: none"> <li>Present report to Elected Members on facility and landholding requirements.</li> </ul>        | Oct – Dec 2015 | The project scope was finalised during the quarter. Consultants were invited to submit quotations in the third quarter.  |         | ✓         |
|  |   | <ul style="list-style-type: none"> <li>Commence development of concept designs.</li> </ul>   | Jan – Mar 2016 |  |         |           |
|  |   | <ul style="list-style-type: none"> <li>Continue development of concept designs.</li> </ul>   | Apr – Jun 2016 |  |         |           |
|  | <b>Edgewater Quarry Master Planning Project</b><br>Develop a Master Plan for the Edgewater Quarry to ensure long-term, sustainable management which reflects the current and future needs of the community.   | <ul style="list-style-type: none"> <li>Present results of the site analysis reports to Elected Members for consideration.</li> </ul> | Oct – Dec 2015 | It is proposed to present the results of the site analysis reports to the Elected Members in the third quarter.  |         | ✓         |
|  | <b>HBF Arena Joondalup Redevelopment</b><br>Provide advice and support to Venues West on the expansion of sporting facilities.  | <ul style="list-style-type: none"> <li>Participate in project team and report progress to Elected Members as required.</li> </ul>    | Jul – Sep 2015 | Relevant project meetings were attended. A project lead consultant was appointed and consultation with stakeholders was undertaken. The Project continues to progress with a Development Application submitted in September. Both West Perth and Wanneroo Basketball Association have been engaged with both parties signing a Heads of Agreement. |         |           |
|  |   | <ul style="list-style-type: none"> <li>Participate in project team and report progress to Elected Members as required.</li> </ul>    | Oct – Dec 2015 | An Expression of Interest for the design and construction element of the project was sought during the quarter. A Development Approval was issued and tenders were invited by those firms shortlisted from the EOI process.  |         | ✓         |
|  |   | <ul style="list-style-type: none"> <li>Participate in project team and report progress to Elected Members as required.</li> </ul>    | Jan – Mar 2016 |  |         |           |
|  |   | <ul style="list-style-type: none"> <li>Participate in project team and report progress to Elected Members as required.</li> </ul>    | Apr – Jun 2016 |  |         |           |
|  | <b>Warwick Stadium Expansion</b><br>Provide advice to the Churches of Christ SRA on the proposed expansion of Warwick Leisure Centre, Warwick.  | <ul style="list-style-type: none"> <li>Participate in project team and report progress to Elected Members as required.</li> </ul>    | Jul – Sep 2015 | Relevant project meetings were attended by City staff and advice provided as required during the quarter.  |         |           |
|  |   | <ul style="list-style-type: none"> <li>Participate in project team and report progress to Elected Members as required.</li> </ul>    | Oct – Dec 2015 | Relevant project meetings were attended by City staff and advice provided as required during the quarter. Practical completion and Certificate of Occupancy was issued in this quarter.  |         | ✓         |
|  |   | <ul style="list-style-type: none"> <li>Participate in project team and report progress to Elected Members as required.</li> </ul>    | Jan – Mar 2016 |  |         |           |
|  | <b>Upgrade of Community Facilities, Timberlane Clubrooms, Woodvale</b><br>Commence development of refurbishment of existing clubrooms to include change rooms   | <ul style="list-style-type: none"> <li>Advertise tender.</li> </ul>  | Jul – Sep 2015 | The tender for upgrade works at Timberlane Clubrooms, Woodvale was advertised and evaluated during the quarter.  |         |           |
|  |   | <ul style="list-style-type: none"> <li>Award tender.</li> </ul>  | Oct – Dec 2015 | The tender for the upgrade of Timberlane Clubroom Woodvale was awarded with construction commencing during the quarter.  |         | ✓         |



| Project  | Milestone   | Target Quarter | Comments   | On Time | On Budget |
|--|---|----------------|--|---------|-----------|
| <p>and internal toilets.</p> <p><b>Bramston Park, Burns Beach</b><br/>Progress project for development of a clubroom facility, car park, playground and installation of floodlighting at Bramston Park.</p> <p><b>Warwick Open Space Hockey Infrastructure Project</b><br/>Progress project to develop a synthetic hockey pitch, clubroom, car park, floodlighting and other sporting infrastructure at Warwick Open Space, Warwick.</p> <p><b>Penistone Reserve Redevelopment Penistone Park, Greenwood</b><br/>Develop clubroom facility and undertake other infrastructure works project for construction in 2016-2017 and 2017-2018.</p> <p><b>Undercroft Bridge Club, Percy Doyle Reserve, Duncraig</b></p> | <ul style="list-style-type: none"> <li>Undertake construction.</li> </ul>   | Jan – Mar 2016 |  |         |           |
|  | <ul style="list-style-type: none"> <li>Finalise construction.</li> </ul>  | Apr – Jun 2016 |  |         |           |
|  | <ul style="list-style-type: none"> <li>Continue construction.</li> </ul>  | Jul – Sep 2015 | Construction works at Bramston Park, Burns Beach, continued during the quarter.  |         |           |
|  | <ul style="list-style-type: none"> <li>Continue construction.</li> </ul>  | Oct – Dec 2015 | Construction works at Bramston Park, Burns Beach, continued during the quarter.  |         | ✓         |
|  | <ul style="list-style-type: none"> <li>Continue construction.</li> </ul>  | Jan – Mar 2016 |  |         |           |
|  | <ul style="list-style-type: none"> <li>Complete construction.</li> </ul>  | Apr – Jun 2016 |  |         |           |
|  | <ul style="list-style-type: none"> <li>Continue development of design and specifications.</li> </ul>  | Jul – Sep 2015 | The development of the design was finalised and has been endorsed by the Whitfords Hockey Club. The development of tender documentation commenced during the quarter.  |         |           |
|  | <ul style="list-style-type: none"> <li>Finalise design.</li> <li>Advertise tender for construction.</li> </ul>  | Oct – Dec 2015 | The design for the Warwick Open Space Hockey Infrastructure Project was finalised in the previous quarter.<br>The tender for construction was advertised during the quarter.   |         | ✓         |
|  | <ul style="list-style-type: none"> <li>Award tender.</li> </ul>   | Jan – Mar 2016 |  |         |           |
|  | <ul style="list-style-type: none"> <li>Commence construction.</li> </ul>  | Apr – Jun 2016 |  |         |           |
|  | <ul style="list-style-type: none"> <li>Present report to Council recommending submission of an application to the Department of Sport and Recreation's Community Sporting and Recreation Facilities Fund.</li> <li>Submit application to the Department of Sport and Recreation's Community Sporting and Recreation Facilities Fund, subject to Council endorsement.</li> </ul> | Jul – Sep 2015 | Council endorsed the recommendation for submitting an application to the Department of Sport and Recreation's Community Sporting and Recreation Facilities Fund at its meeting held in August.<br>The Community Sporting and Recreation Facilities Fund application was submitted to the Department of Sport and Recreation. |         | ✓         |
|  | <ul style="list-style-type: none"> <li>Receive decision from the Department of Sport and Recreation on the Community Sporting and Recreation Facilities Fund application.</li> </ul>  | Jan – Mar 2016 |  |         |           |
|  | <ul style="list-style-type: none"> <li>Present report to Council on the outcome of the application.</li> </ul>  | Apr – Jun 2016 |  |         |           |
|  | <ul style="list-style-type: none"> <li>Develop concept design.</li> </ul>   | Jul – Sep 2015 | The development of a concept design was completed during the quarter.  |         |           |

|  | Project  | Milestone  | Target Quarter | Comments   | On Time | On Budget |
|--|--|--|----------------|--|---------|-----------|
|  | Refurbish existing facility with details of design to be determined during the consultation phase of the project for construction in 2016-2017.  | <ul style="list-style-type: none"> <li>Present report to Council on concept design.</li> </ul>   | Oct – Dec 2015 | The concept designs and cost estimates for the project were presented to Council during the quarter.   |         | ✓         |
|  | <b>Mullaloo Surf Life Saving Club</b><br>Provide advice as required on the refurbishment project (managed by Mullaloo Surf Life Saving Club).  | <ul style="list-style-type: none"> <li>Participate in project team as required.</li> </ul>   | Jul – Sep 2015 | Relevant project meetings were attended by City staff and advice provided as required during the quarter.  |         |           |
|  |  | <ul style="list-style-type: none"> <li>Participate in project team as required.</li> </ul>   | Oct – Dec 2015 | Relevant project meetings were attended by City staff and advice provided as required during the quarter.  |         | ✓         |
|  |  | <ul style="list-style-type: none"> <li>Participate in project team as required.</li> </ul>   | Jan – Mar 2016 |  |         |           |
|  |  | <ul style="list-style-type: none"> <li>Participate in project team as required.</li> </ul>   | Apr – Jun 2016 |  |         |           |
|  | <b>Joondalup Men's Shed</b><br>Investigate the facility requirements for the Joondalup Men's Shed.   | <ul style="list-style-type: none"> <li>Engage in discussions with Joondalup Men's Shed and Department of Education regarding future facility arrangements for the Men's Shed.</li> </ul> | Oct – Dec 2015 | Discussions with the Department of Education took place during the quarter, with the Department indicating that the existing lease arrangement will not be extended after December 2016. Future arrangements continue to be considered.  |         | ✓         |
|  |  | <ul style="list-style-type: none"> <li>Present report to Council outlining the results of discussions and making recommendations.</li> </ul>   | Apr – Jun 2016 |  |         |           |
| <b>Objective:</b> For the community to have access to world-class cultural and artistic events and facilities. | <b>Public Art</b><br>Install permanent public artwork in the City Centre.  | <ul style="list-style-type: none"> <li>Install public artwork.</li> </ul>  | Jul – Sep 2015 | The installation of the public artwork in Central Walk Joondalup was completed during the quarter. The water sculpture entitled Interlace by Geoffrey Drake-Brockman was officially opened by His Worship the Mayor, Troy Pickard on 25 August.  |         | ✓         |
|  | <b>Arts Development Scheme</b><br>Implement the Arts Development Scheme to support the annual allocation of funds to encourage the delivery of arts programs and projects by professional art companies and individuals within the City. | <ul style="list-style-type: none"> <li>Conduct Round 1 of Arts Development Scheme.</li> </ul>  | Oct – Dec 2015 | Five applications were received for Round 1 of the Arts Development Scheme. Contemporary dance organisation, Co3, were successful in receiving \$10,000 grant funding.   |         | ✓         |
|  |  | <ul style="list-style-type: none"> <li>Conduct Round 2 of Arts Development Scheme.</li> </ul>  | Apr – Jun 2016 |  |         |           |
|  | <b>Arts in Focus</b><br>Undertake project to increase understanding of arts and culture in the City of Joondalup.  | <ul style="list-style-type: none"> <li>Provide resources and opportunities for supporting arts and cultural development.</li> </ul>  | Jul – Sep 2015 | Two Arts in Focus workshops were held during the quarter on setting up your own arts business and improvisation skills. The workshops were well attended and received high satisfaction ratings.   |         |           |
|  |  | <ul style="list-style-type: none"> <li>Provide resources and opportunities for supporting arts and cultural development.</li> </ul>  | Oct – Dec 2015 | Three Arts in Focus workshops were held during the quarter inviting local artists and arts organisations to design and create their own clay sculptures for the Joondalup Festival, along with painting workshops held by Mand Markey. The workshops were well attended and received high satisfaction ratings |         | ✓         |
|  |  | <ul style="list-style-type: none"> <li>Provide resources and opportunities for supporting arts and cultural development.</li> </ul>  | Jan – Mar 2016 |  |         |           |
|  |  | <ul style="list-style-type: none"> <li>Provide resources and opportunities for supporting arts and cultural development.</li> </ul>  | Apr – Jun 2016 |  |         |           |

## COMMUNITY WELLBEING

|  | Project   | Milestone   | Target Quarter | Comments  | On Time | On Budget |
|--|---|---|----------------|---|---------|-----------|
| <b>Objective:</b> To have proud and active residents who participate in local activities and services for the betterment of the community. | <b>Community Funding Program</b><br>Assist community based organisations to conduct projects, events, and activities to develop and enhance the community through the Community Funding Program. Funding is awarded under the following categories: <ul style="list-style-type: none"> <li>• Environmental Development;</li> <li>• Sport and Recreation Development;</li> <li>• Community Services; and</li> <li>• Culture and Arts Development.</li> </ul> | <ul style="list-style-type: none"> <li>• Conduct Round 1 Funding Program.</li> </ul>  | Oct – Dec 2015 | Round 1 of the Community Funding Program was conducted during the quarter with the following funds being awarded: <ul style="list-style-type: none"> <li>• Community Development: Fourteen applications were approved totalling \$14,685;</li> <li>• Culture and the Arts Development: Four applications were approved totalling \$10,046;</li> <li>• Sports and Recreation Development: Five applications were approved totalling \$9,048; and</li> <li>• Environmental Development: Eight applications were approved totalling \$15,537.</li> </ul> |         | ✓         |
|  |   | <ul style="list-style-type: none"> <li>• Conduct Round 2 Funding Program.</li> </ul>  | Apr – Jun 2016 |   |         |           |
|  | <b>Cultural Program</b><br>Support the current program of community cultural activities by target dates.  | The following events to be held: <ul style="list-style-type: none"> <li>• NAIDOC Week celebrations; and</li> <li>• Sunday Serenades.</li> </ul>   | Jul – Sep 2015 | The following cultural events were held during the quarter: <ul style="list-style-type: none"> <li>• NAIDOC Celebrations between 5 and 12 July; and</li> <li>• Sunday Serenades Concerts on 19 July, 16 August, and 20 September.</li> </ul>  |         |           |
|  |   | The following events to be held: <ul style="list-style-type: none"> <li>• Sunday Serenades;</li> <li>• Joondalup Sunset Markets;</li> <li>• Little Feet Festival;</li> <li>• Summer Concerts 1 and 2; and</li> <li>• Community Invitation Art Award.</li> </ul> | Oct – Dec 2015 | The following cultural events were held during the quarter: <ul style="list-style-type: none"> <li>• Sunday Serenades on 16 October, 20 November and 11 December;</li> <li>• Joondalup Twilight Markets on 20, 27 November, 4, 11 and 18 December;</li> <li>• Little Feet Festival on 25 October;</li> <li>• Music in the Park Concerts 1 and 2 on 21 November and 12 December; and</li> <li>• Community Invitation Art Award between 17 and 31 October.</li> </ul>   |         | ✓         |
|  |   | The following events to be held: <ul style="list-style-type: none"> <li>• Summer Concert 3;</li> <li>• Valentine's Concert; and</li> <li>• Joondalup Festival.</li> </ul>   | Jan – Mar 2016 |   |         |           |
|  |   | The following events to be held: <ul style="list-style-type: none"> <li>• Community Art Exhibition;</li> <li>• Joondalup Eisteddfod; and</li> <li>• Sunday Serenades.</li> </ul>  | Apr – Jun 2016 |   |         |           |
|  | <b>Community Based Events</b><br>Deliver an annual program of community based events to encourage social interaction  | The following activities to be promoted: <ul style="list-style-type: none"> <li>• Youth School Holiday Program.</li> </ul>  | Jul – Sep 2015 | The July Youth Holiday Program offering a wide range activities and excursions for 12 to 18 year olds from Anchors Youth Centre in Heathridge was promoted using Facebook, newspaper advertisements, e-newsletters and school notices.  |         |           |

|  | Project  | Milestone  | Target Quarter | Comments  | On Time | On Budget |
|--|--|--|----------------|---|---------|-----------|
|  | within local neighbourhoods.   | The following activities to be promoted: <ul style="list-style-type: none"><li>Neighbourhood BBQ Program;</li><li>Art of Ageing Event;</li><li>Defeat the Beat Competition;</li><li>International Volunteer Day; and</li><li>Youth Music Festival.</li></ul>                                       | Oct – Dec 2015 | The following activities were undertaken during the quarter to promote community based events: <ul style="list-style-type: none"><li>The Neighbourhood BBQ program with 12 registrations being received;</li><li>An Art of Ageing Event held on 5 November 2015 which attracted approximately 140 participants who were provided information on City programs and services and participated in a range of hands-on activities;</li><li>Defeat the Beat Competition held on 8 October 2015 at the Arcade Lounge in Joondalup which attracted 70 participants; and</li><li>International Volunteer Day celebrated at the Music in the Park Concert Series on 12 December 2015.</li></ul><br>There were no Youth Music Festivals were held during the quarter. |         | ✓         |
|  |  | The following activities to be promoted: <ul style="list-style-type: none"><li>Neighbourhood BBQ Program;</li><li>Art of Ageing Event;</li><li>Youth School Holiday Program;</li><li>Two Skate, Scooter and BMX Competitions;</li><li>Summer Sessions; and</li><li>Youth Music Festival.</li></ul> | Jan – Mar 2016 |   |         |           |
|  |  | The following activities to be promoted: <ul style="list-style-type: none"><li>Art of Ageing Event;</li><li>National Volunteer Week;</li><li>Youth School Holiday Program; and</li><li>Youth Music Festival.</li></ul>   | Apr – Jun 2016 |   |         |           |
|  | <b>Civic Ceremonies</b><br><br>The City conducts regular Citizenship Ceremonies on behalf of the Department of Immigration and Citizenship and welcomes new citizens to the City.<br><br>The City also hosts a number of civic ceremonies and corporate functions throughout the year including ceremonies such as: <ul style="list-style-type: none"><li>Remembrance Day Memorial Service; and</li><li>ANZAC Day.</li></ul> | <ul style="list-style-type: none"><li>Conduct regular Citizenship Ceremonies.</li><li>Deliver planned functions and ceremonies.</li></ul>  | Jul – Sep 2015 | The City held five Citizenship Ceremonies where more than 413 local residents became Australian citizens during the quarter.<br><br>The following civic functions were successfully held: <ul style="list-style-type: none"><li>Joondalup Dinner;</li><li>Policy Reception for Clubs celebrating 25 year Anniversaries;;</li><li>Interlace Public Art Water Feature Opening;</li><li>NAIDOC Week Launch;</li><li>Artist in Residence Morning Tea; and</li><li>Seniors Appreciation Luncheon.</li></ul>  |         |           |
|  |  | <ul style="list-style-type: none"><li>Conduct regular Citizenship Ceremonies.</li><li>Deliver functions and ceremonies.</li><li>Develop program for 2016 Civic and Corporate functions.</li><li>Assist Returned Service League in conducting the Remembrance Day Memorial Service.</li></ul>       | Oct – Dec 2015 | The City held three Citizenship Ceremonies where more than 236 local residents became Australian citizens during the quarter.<br><br>The following civic functions were successfully held: <ul style="list-style-type: none"><li>Community Invitation Art Award VIP event;</li><li>Subiaco and Wolves Championship Reception;</li><li>Mayoral Prayer Breakfast;</li><li>Remembrance Day Service;</li><li>Stakeholder Christmas Reception;</li><li>Community Christmas Reception; and</li><li>Elected Member Christmas Function.</li></ul>   |         | ✓         |

|  | Project  | Milestone  | Target Quarter  | Comments   | On Time   | On Budget |
|--|--|--|---|--|---|-----------|
|  |  | <ul style="list-style-type: none"><li>Conduct regular Citizenship Ceremonies including an Australia Day Ceremony.</li><li>Deliver functions and ceremonies.</li></ul>  | Jan – Mar 2016  |  |   |           |
|  |  | <ul style="list-style-type: none"><li>Conduct regular Citizenship Ceremonies.</li><li>Deliver functions and ceremonies.</li><li>Assist Returned Service League in conducting the ANZAC Day Memorial Service.</li></ul> | Apr – Jun 2016  |  |   |           |
|  | <b>Community Development Plan</b><br>Implement the actions from the Community Development Plan to guide the provision of community based services delivered by the City. | <ul style="list-style-type: none"><li>Implement actions from the Community Development Plan.</li></ul>   | Jul – Sep 2015  | Actions in line with the Community Development Plan continued to be implemented during the quarter including the development of a Communities in Focus Program.  |   |           |
|  |  | <ul style="list-style-type: none"><li>Implement actions from the Community Development Plan.</li></ul>   | Oct – Dec 2015  | The City continued the implementation of actions in the Community Development Plan including: <ul style="list-style-type: none"><li>Assisting the Duncraig Edible Garden Committee in gaining incorporation status; and</li><li>Working in partnership with Volunteering WA to deliver the Joondalup Volunteer Resource Centre.</li></ul>        |   | ✓         |
|  |  | <ul style="list-style-type: none"><li>Implement actions from the Community Development Plan.</li></ul>   | Jan – Mar 2016  |  |   |           |
|  |  | <ul style="list-style-type: none"><li>Implement actions from the Community Development Plan.</li><li>Present progress report to Elected Members on the achievements of the Community Development Plan.</li></ul>       | Apr – Jun 2016  |  |   |           |
|  | <b>Objective:</b> For residents to feel safe and confident in their ability to travel and socialise within the community.  | <b>Community Safety and Crime Prevention Plan (CSCPP)</b><br>Implement and contribute to community safety programs and services in the City in line with the Community Safety and Crime Prevention Plan.               | <ul style="list-style-type: none"><li>Implement actions from the Community Safety and Crime Prevention Plan.</li><li>Present progress report to Elected Members on the achievements against the Community Safety and Crime Prevention Plan.</li></ul> | Jul – Sep 2015   | Actions from the Community Safety and Crime Prevention Plan continued to be implemented during the quarter including ongoing support for the neighbourhood watch Program and the WA Police E-Watch Program.<br><br>A progress report on the achievements against the Community Safety and Crime Prevention Plan was developed and will be provided to Elected Members in the second quarter of 2015-2016. |           |
| <ul style="list-style-type: none"><li>Implement actions from the Community Safety and Crime Prevention Plan.</li></ul> |  |  | Oct – Dec 2015  | Actions from the Community Safety and Crime Prevention Plan continued to be implemented during the quarter including ongoing support for the Neighbourhood Watch Program and the WA Police E-Watch Program.<br><br>Elected Members were provided an update on the progress of the Community Safety and Crime Prevention Plan during the quarter. |   | ✓         |
| <ul style="list-style-type: none"><li>Implement actions from the Community Safety and Crime Prevention Plan.</li></ul> |  |  | Jan – Mar 2016  |  |   |           |
| <ul style="list-style-type: none"><li>Implement actions from the Community Safety and Crime Prevention Plan.</li></ul> |  |  | Apr – Jun 2016  |  |   |           |
| <b>Ranger and Community Patrol Service</b><br>Develop and implement a new ranger and                                   |  | <ul style="list-style-type: none"><li>Develop service.</li></ul>   | Jul – Sep 2015  | The development of the new Ranger and Community Patrol Service continued during the quarter. Recruitment for the new service has also commenced.   |   |           |



|  | Project  | Milestone   | Target Quarter | Comments   | On Time | On Budget |
|--|--|---|----------------|--|---------|-----------|
|  | community patrol service.  | <ul style="list-style-type: none"><li>Develop and implement service.</li></ul>  | Oct – Dec 2015 | The former City Watch service ceased operations and the new City Rangers service commenced operations in December 2015.  |         | ✓         |
|  | <b>Road Safety Action Plan</b><br>Implement road safety strategies and initiatives from the Road Safety Action Plan 2015-2020. | <ul style="list-style-type: none"><li>Develop new Road Safety Action Plan 2015-2020.</li></ul>                                  | Jul – Sep 2015 | The development of the draft Road Safety Action Plan 2015-2020 continued during the quarter.   |         |           |
|  |  | <ul style="list-style-type: none"><li>Present report to Elected Members on the new Road Safety Action Plan 2015-2020.</li></ul> | Oct – Dec 2015 | The development of the draft Road Safety Action Plan 2015-2020 continued during the quarter. The draft Road Safety Action Plan is expected to be presented to Elected Members in the fourth quarter. |         | ✓         |
|  |  | <ul style="list-style-type: none"><li>Implement actions from Road Safety Action Plan 2015-2020.</li></ul>                       | Jan – Mar 2016 |  |         |           |
|  |  | <ul style="list-style-type: none"><li>Implement actions from Road Safety Action Plan 2015-2020.</li></ul>                       | Apr – Jun 2016 |  |         |           |



## Attachment 2

# Capital Works Quarterly Report - Financial Year 2015/2016

## Quarter 2

ATTACHMENT 2

Version Control : 14/01/2016 - 10:13 AM

Trim Reference : 56593

### PDP Parks Development Program

| Project Code      | Project Description                    | Additions & Adjustments | Budget Amount FY | Budget Amount YTD | CL Actuals | Proposed Construction Date | Proposed Construction Completion Date | % Complete | Comment                 | Completion Date | Project Stage     |
|-------------------|--|-------------------------|------------------|-------------------|------------|----------------------------|---------------------------------------|------------|-------------------------|-----------------|-------------------|
| PDP2089           | James Cook Park Landscape Upgrade      | 0                       | 520,000          | 3,500             | 75,496     | 01/07/2015                 | 30/04/2016                            | 30 %       |                         |                 | Works in Progress |
| PDP2115           | Chelsea Park Irrigation Installation   | 0                       | 113,000          | 56,500            | 35,772     | 10/08/2015                 | 29/04/2016                            | 60 %       |                         |                 | Works in Progress |
| PDP2116           | Water Tower Park Irrigation Upgrade    | 0                       | 113,000          | 56,500            | 1,390      | 01/09/2015                 | 27/05/2016                            | 5 %        |                         |                 | Works in Progress |
| PDP2176           | Iluka Irrigation Upgrades              | 0                       | 75,000           | 37,500            | 36,795     | 10/08/2015                 | 10/06/2016                            | 50 %       |                         |                 | Works in Progress |
| PDP2182           | Whitfords Nodes Irrigation Upgrade     | 0                       | 65,000           | 65,000            | 4,934      | 01/09/2015                 | 29/04/2016                            | 75 %       |                         |                 | Works in Progress |
| PDP2217           | Whitfords Park East Irrigation Upgrade | 0                       | 61,000           | 61,000            | 1,390      | 01/09/2015                 | 24/12/2015                            | 100 %      | Actual Completion       | 17/12/2015      | Works Completed   |
| PDP2221           | City Centre Irrigation Upgrades        | 0                       | 85,000           | 42,500            | 15,443     | 10/08/2015                 | 10/06/2016                            | 10 %       |                         |                 | Works in Progress |
| PDP2232           | Gradient Park Irrigation Upgrades      | 0                       | 66,000           | 66,000            | 1,390      | 01/09/2015                 | 24/12/2015                            | 95 %       | Expected Completion     | 24/06/2016      | Works in Progress |
| PDP2236           | Gibson Park Irrigation Upgrades        | 0                       | 33,000           | 33,000            | 1,390      | 05/10/2015                 | 29/01/2016                            | 95 %       |                         |                 | Works in Progress |
| PDP2246           | Broadbeach / Flinders Park Upgrades    | 0                       | 0                | 0                 | -1,685     | 01/07/2014                 | 29/05/2015                            | 100 %      | Project Completed 14/15 | 15/06/2015      | Works Completed   |
| PDP2252           | Tree Planting Program                  | 0                       | 95,000           | 30,000            | 26,781     | 01/07/2015                 | 24/06/2016                            | 50 %       |                         |                 | Works in Progress |
| PDP2269           | Tom Simpson Park - Carpark Landscaping | 0                       | 64,000           | 0                 | 388        | 01/04/2016                 | 31/05/2016                            | 0 %        |                         |                 | Design Phase      |
| Program Sub Total |  | 0                       | 1,290,000        | 451,500           | 199,483    |                            |                                       |            |                         |                 |                   |

### FNM Foreshore & Natural Areas Management Program

| Project Code      | Project Description                      | Additions & Adjustments | Budget Amount FY | Budget Amount YTD | CL Actuals | Proposed Construction Date | Proposed Construction Completion Date | % Complete | Comment           | Completion Date | Project Stage     |
|-------------------|--|-------------------------|------------------|-------------------|------------|----------------------------|---------------------------------------|------------|-------------------|-----------------|-------------------|
| FNM2044           | Foreshore Path Drinking Fountain Program | 0                       | 25,000           | 25,000            | 26,168     | 01/10/2015                 | 30/11/2015                            | 100 %      | Actual Completion | 30/11/2015      | Works Completed   |
| FNM2046           | Lilburne Park - Pathway Renewal          | 0                       | 50,000           | 0                 | 0          | 01/03/2016                 | 30/04/2016                            | 0 %        |                   |                 | Works Phased      |
| FNM2049           | Shepherds Bush Park Path Renewal         | 0                       | 50,000           | 0                 | 0          | 01/04/2016                 | 30/05/2016                            | 0 %        |                   |                 | Works Phased      |
| FNM2050           | Conservation Reserves Interpretive Signa | 0                       | 50,000           | 0                 | 0          | 01/03/2016                 | 30/06/2016                            | 0 %        |                   |                 | Works Phased      |
| FNM2051           | Coastal & Foreshore Fencing Renewal Prog | 0                       | 110,000          | 44,000            | 43,879     | 01/08/2015                 | 30/06/2016                            | 25 %       |                   |                 | Works in Progress |
| FNM2059           | Bushland Reserve Fencing Renewal Program | 0                       | 50,000           | 25,000            | 17,233     | 01/09/2015                 | 30/06/2016                            | 20 %       |                   |                 | Works in Progress |
| FNM2071           | Wetlands Renewal Program                 | 57,797                  | 100,000          | 32,500            | 17,591     | 01/10/2015                 | 30/06/2016                            | 10 %       |                   |                 | Works in Progress |
| FNM2075           | Trigonometric Park Viewing Platform      | 0                       | 35,000           | 1,500             | 0          | 01/04/2016                 | 31/05/2016                            | 0 %        |                   |                 | Works Phased      |
| Program Sub Total |  | 57,797                  | 470,000          | 128,000           | 104,872    |                            |                                       |            |                   |                 |                   |

PEP

Parks Equipment Program

| Project Code      | Project Description                      | Additions & Adjustments | Budget Amount FY | Budget Amount YTD | CL Actuals | Proposed Construction Date | Proposed Construction Completion Date | % Complete | Comment           | Completion Date | Project Stage      |
|-------------------|--|-------------------------|------------------|-------------------|------------|----------------------------|---------------------------------------|------------|-------------------|-----------------|--------------------|
| PEP2029           | Fencing - Warwick & H'Ridge              | 0                       | 30,000           | 30,000            | 27,945     | 05/10/2015                 | 27/11/2015                            | 100 %      | Actual Completion | 26/11/2015      | Works Completed    |
| PEP2044           | Universal Access Paths Program           | 0                       | 50,000           | 29,500            | 18,374     | 01/07/2015                 | 30/06/2016                            | 10 %       |                   |                 | Works in Progress  |
| PEP2075           | Parks Asset Replacement / Renewal        | 0                       | 27,000           | 12,500            | 15,960     | 13/07/2015                 | 24/06/2016                            | 60 %       |                   |                 | Works in Progress  |
| PEP2237           | Otago Park - New Playground Equipment    | 0                       | 110,000          | 110,000           | 82,847     | 01/09/2015                 | 31/10/2015                            | 100 %      | Actual Completion | 28/08/2015      | Works Completed    |
| PEP2517           | Tennis Court Resurfacing Program         | 0                       | 100,000          | 0                 | 0          | 11/01/2016                 | 29/04/2016                            | 0 %        |                   |                 | Works Programed    |
| PEP2522           | Windermere Park - New Playground Equipme | 0                       | 110,000          | 3,500             | 1,154      | 01/04/2016                 | 24/05/2016                            | 0 %        |                   |                 | Design Phase       |
| PEP2574           | Coastal Picnic Shelters Renewals         | 0                       | 18,000           | 18,000            | 15,200     | 07/09/2015                 | 30/10/2015                            | 100 %      | Actual Completion | 16/10/2015      | Works Completed    |
| PEP2576           | Tom Simpson Park Shelter Renewal         | 0                       | 18,000           | 0                 | 0          | 04/04/2016                 | 29/04/2016                            | 0 %        |                   |                 | Works Phased       |
| PEP2577           | West Coast Drive Coastal Shelters        | 0                       | 150,000          | 750               | 470        | 04/04/2016                 | 31/05/2016                            | 0 %        |                   |                 | Design Phase       |
| PEP2578           | Sorrento Foreshore Barbeque Renewals     | 0                       | 54,000           | 54,000            | 40,362     | 07/09/2015                 | 27/11/2015                            | 100 %      | Actual Completion | 13/11/2015      | Works Completed    |
| PEP2584           | Whitfords West Park - New Play Equipment | 0                       | 110,000          | 3,500             | 7,506      | 01/03/2016                 | 30/04/2016                            | 0 %        |                   |                 | Design Phase       |
| PEP2620           | Coastal Foreshore Showers Program        | 0                       | 25,000           | 25,000            | 28,724     | 01/09/2015                 | 30/11/2015                            | 100 %      | Actual Completion | 30/11/2015      | Works Completed    |
| PEP2629           | Cricket Infrastructure Renewal City Wide | 0                       | 100,000          | 100,000           | 109,443    | 13/07/2015                 | 30/10/2015                            | 100 %      | Actual Completion | 22/10/2015      | Works Completed    |
| PEP2637           | Goal Post Renewal City Wide              | 0                       | 40,000           | 0                 | 7,300      | 01/03/2016                 | 29/04/2016                            | 20 %       |                   |                 | Works in Progress  |
| PEP2638           | Park Seating Renewal City Wide           | 0                       | 10,000           | 10,000            | 9,559      | 03/11/2015                 | 18/12/2015                            | 100 %      | Actual Completion | 17/12/2015      | Works Completed    |
| PEP2642           | Park Signage Renewal City Wide           | 0                       | 50,000           | 0                 | 0          | 11/01/2016                 | 10/06/2016                            | 0 %        |                   |                 | Works Programed    |
| PEP2644           | Park Vehicle Entry Renewal City Wide     | 0                       | 36,000           | 0                 | 0          | 11/01/2016                 | 29/04/2016                            | 0 %        |                   |                 | Works Programed    |
| PEP2645           | Playground Surrounds City Wide           | 0                       | 10,000           | 10,000            | 11,991     | 05/10/2015                 | 27/11/2015                            | 100 %      | Actual Completion | 16/10/2015      | Works Completed    |
| PEP2661           | Shepherds Bush Park - New Playground Equ | 0                       | 110,000          | 3,500             | 10,787     | 01/04/2016                 | 31/05/2016                            | 0 %        |                   |                 | Design Phase       |
| PEP2662           | Hawker Park - New Playground Equipment   | 0                       | 110,000          | 3,500             | 6,119      | 01/12/2015                 | 31/03/2016                            | 0 %        |                   |                 | Works Programed    |
| PEP2672           | Gunida Park - New Playground Equipment   | 0                       | 110,000          | 3,500             | 3,096      | 01/04/2016                 | 31/05/2016                            | 0 %        |                   |                 | Design Phase       |
| PEP2674           | Calectasia Park Kindy - New Playground   | 0                       | 50,000           | 2,000             | 1,531      | 01/02/2016                 | 29/02/2016                            | 0 %        |                   |                 | Design Phase       |
| PEP2676           | Larkspur Park - New Playground Equipment | 0                       | 110,000          | 3,500             | 90,629     | 01/12/2015                 | 29/02/2016                            | 95 %       |                   |                 | Works in Progress  |
| PEP2678           | Ridge Park - New Playground Equipment    | 0                       | 110,000          | 3,500             | 71,308     | 01/02/2016                 | 31/03/2016                            | 100 %      | Actual Completion | 22/12/2015      | Works Completed    |
| PEP2681           | Albacore Park - New Playground Equipment | 0                       | 110,000          | 110,000           | 100,969    | 01/09/2015                 | 31/10/2015                            | 100 %      | Actual Completion | 17/09/2015      | Works Completed    |
| PEP2716           | Mirror Park Skate Facility - Information | 0                       | 12,000           | 0                 | 672        | 01/05/2016                 | 31/05/2016                            | 0 %        |                   |                 | Design Phase       |
| PEP2724           | Ellersdale Park Minor Sporting Infrastru | 0                       | 30,000           | 1,000             | 1,465      | 01/03/2016                 | 31/03/2016                            | 0 %        |                   |                 | Works Programed    |
| PEP2728           | Fish Cleaning Station - Ocean Reef Boat  | 0                       | 40,000           | 0                 | 1,260      | 01/03/2016                 | 22/04/2016                            | 0 %        |                   |                 | Consultation Phase |
| PEP2733           | Granadilla Park New Infrastructure       | 0                       | 40,000           | 0                 | 2,572      | 01/04/2016                 | 31/05/2016                            | 0 %        |                   |                 | Design Phase       |
| PEP2734           | Chichester Park Drinking Fountain        | 0                       | 8,000            | 8,000             | 8,660      | 01/10/2015                 | 30/11/2015                            | 100 %      | Actual Completion | 30/11/2015      | Works Completed    |
| Program Sub Total |  | 0                       | 1,888,000        | 545,250           | 675,903    |                            |                                       |            |                   |                 |                    |

SSE

Streetscape Enhancement Program

| Project Code      | Project Description                      | Additions & Adjustments | Budget Amount FY | Budget Amount YTD | CL Actuals | Proposed Construction Date | Proposed Construction Completion Date | % Complete | Comment | Completion Date | Project Stage     |
|-------------------|--|-------------------------|------------------|-------------------|------------|----------------------------|---------------------------------------|------------|---------|-----------------|-------------------|
| SSE2011           | Arterial Roads Landscape Upgrade Program | 0                       | 800,000          | 695,000           | 557,951    | 01/07/2015                 | 24/06/2016                            | 80 %       |         |                 | Works in Progress |
| SSE2055           | Streetscape Renewal Program              | 0                       | 200,000          | 100,000           | 87,034     | 01/07/2015                 | 24/06/2016                            | 25 %       |         |                 | Works in Progress |
| SSE2057           | Leafy City Program                       | 0                       | 250,000          | 0                 | 24,293     | 04/04/2016                 | 24/06/2016                            | 0 %        |         |                 | Design Phase      |
| Program Sub Total |  | 0                       | 1,250,000        | 795,000           | 669,278    |                            |                                       |            |         |                 |                   |

LTM

Local Traffic Management Program

| Project Code      | Project Description                      | Additions & Adjustments | Budget Amount FY | Budget Amount YTD | CL Actuals | Proposed Construction Date | Proposed Construction Completion Date | % Complete | Comment                 | Completion Date | Project Stage       |
|-------------------|--|-------------------------|------------------|-------------------|------------|----------------------------|---------------------------------------|------------|-------------------------|-----------------|---------------------|
| LTM2044           | Venturi Dr Median Treatment              | 0                       | 120,000          | 0                 | 9,175      | 01/04/2016                 | 15/06/2016                            | 0 %        |                         |                 | Design Phase        |
| LTM2083           | Northshore Dr Pedestrian Crossing Upgrad | 0                       | 125,000          | 0                 | 640        | 04/01/2016                 | 29/02/2016                            | 5 %        |                         |                 | Works in Progress   |
| LTM2091           | Oceanside Promenade - Warren Way to West | 0                       | 255,000          | 0                 | 0          | 04/04/2016                 | 10/06/2016                            | 0 %        |                         |                 | Tender Phase        |
| LTM2113           | Marybrook Road Median Treatment          | 0                       | 70,000           | 70,000            | 46,302     | 01/09/2015                 | 30/10/2015                            | 100 %      | Actual Completion       | 18/09/2015      | Works Completed     |
| LTM2115           | Doveridge Dr Verge Improvements          | 0                       | 30,000           | 30,000            | 5,434      | 01/07/2015                 | 31/08/2015                            | 100 %      | Actual Completion       | 14/08/2015      | Works Completed     |
| LTM2120           | Roche Rd/Currajong Rd Intersection Treat | 0                       | 40,000           | 40,000            | 7,238      | 01/07/2015                 | 30/09/2015                            | 100 %      | Actual Completion       | 18/08/2015      | Works Completed     |
| LTM2121           | Roche Rd/Cassinia Rd Intersection Treatm | 0                       | 40,000           | 40,000            | 22,790     | 01/07/2015                 | 30/09/2015                            | 100 %      | Actual Completion       | 18/08/2015      | Works Completed     |
| LTM2122           | Wandoo Rd/Cassinia Rd Intersection Treat | 0                       | 40,000           | 40,000            | 15,264     | 01/07/2015                 | 30/09/2015                            | 100 %      | Actual Completion       | 18/08/2015      | Works Completed     |
| LTM2128           | Marmion/Edinburgh Pedestrian Crossing I  | 0                       | 150,000          | 0                 | 9,051      | 01/04/2016                 | 30/06/2016                            | 0 %        |                         |                 | Investigation Phase |
| LTM2132           | Minor Road Safety Improvements           | 0                       | 50,000           | 50,000            | 4,593      | 01/10/2015                 | 30/06/2016                            | 75 %       |                         |                 | Works in Progress   |
| LTM2134           | MYR - Hepburn Ave/Karuah Way WigWag      | -25,000                 | 25,000           | 25,000            | 0          | 01/07/2015                 | 31/07/2015                            | 100 %      | Project Completed 14/15 | 28/06/2015      | Works Completed     |
| Program Sub Total |  | -25,000                 | 945,000          | 295,000           | 120,486    |                            |                                       |            |                         |                 |                     |

SBS

Blackspot Program

| Project Code      | Project Description                      | Additions & Adjustments | Budget Amount FY | Budget Amount YTD | CL Actuals | Proposed Construction Date | Proposed Construction Completion Date | % Complete | Comment           | Completion Date | Project Stage     |
|-------------------|--|-------------------------|------------------|-------------------|------------|----------------------------|---------------------------------------|------------|-------------------|-----------------|-------------------|
| SBS2059           | Grand Blvd/Hodges Dr/Joondalup Dr Inters | 0                       | 144,000          | 0                 | 5,145      | 11/01/2016                 | 29/04/2016                            | 85 %       |                   |                 | Works in Progress |
| SBS2060           | Whitfords Ave/Dampier Ave Intersection   | 0                       | 15,000           | 0                 | 0          | 01/02/2016                 | 31/03/2016                            | 0 %        |                   |                 | Works Programed   |
| SBS2062           | Oceanside Promenade                      | 0                       | 585,000          | 0                 | 11,657     | 01/04/2016                 | 30/06/2016                            | 0 %        |                   |                 | Tender Phase      |
| SBS2063           | Marmion Ave/Shenton Ave Roundabout       | 0                       | 310,000          | 235,000           | 283,477    | 01/09/2015                 | 26/02/2016                            | 100 %      | Actual Completion | 22/12/2015      | Works Completed   |
| SBS2064           | Joondalup Dr/Shenton Ave Lighting Upgrad | 0                       | 246,000          | 0                 | 4,685      | 01/02/2016                 | 24/06/2016                            | 0 %        |                   |                 | Tender Phase      |
| Program Sub Total |  | 0                       | 1,300,000        | 235,000           | 304,964    |                            |                                       |            |                   |                 |                   |

PFP

Parking Facilities Program

| Project Code      | Project Description                    | Additions & Adjustments | Budget Amount FY | Budget Amount YTD | CL Actuals | Proposed Construction Date | Proposed Construction Completion Date | % Complete | Comment           | Completion Date | Project Stage   |
|-------------------|--|-------------------------|------------------|-------------------|------------|----------------------------|---------------------------------------|------------|-------------------|-----------------|-----------------|
| PFP2057           | Whitfords Nodes South Car Park Renewal | 0                       | 120,000          | 0                 | 0          | 04/04/2016                 | 30/06/2016                            | 0 %        |                   |                 | Design Phase    |
| PFP2059           | Elcar Lane Parking Improvements        | 0                       | 50,000           | 50,000            | 11,885     | 01/08/2015                 | 30/09/2015                            | 100 %      | Actual Completion | 30/09/2015      | Works Completed |
| PFP2060           | St Marks Drive Parking Improvements    | 0                       | 100,000          | 100,000           | 133,205    | 01/07/2015                 | 31/08/2015                            | 100 %      | Actual Completion | 29/07/2015      | Works Completed |
| PFP2064           | Mirror Park - New Car Park             | 0                       | 78,000           | 0                 | 1,887      | 01/03/2016                 | 31/05/2016                            | 0 %        |                   |                 | Design Phase    |
| Program Sub Total |  | 0                       | 348,000          | 150,000           | 146,977    |                            |                                       |            |                   |                 |                 |

RDC

Major Road Construction Program

| Project Code      | Project Description                      | Additions & Adjustments | Budget Amount FY | Budget Amount YTD | CL Actuals | Proposed Construction Date | Proposed Construction Completion Date | % Complete | Comment            | Completion Date | Project Stage     |
|-------------------|--|-------------------------|------------------|-------------------|------------|----------------------------|---------------------------------------|------------|--------------------|-----------------|-------------------|
| RDC2015           | Ocean Reef Rd - Marmion Ave to Oceanside | 12,166                  | 2,500,000        | 0                 | 21,429     | 01/02/2016                 | 29/07/2016                            | 5 %        | Multi-Year Project |                 | Works in Progress |
| RDC2016           | Whitfords Ave - Northshore Drv to Belros | 84,083                  | 2,560,000        | 1,900,000         | 818,021    | 25/08/2015                 | 24/06/2016                            | 75 %       |                    |                 | Works in Progress |
| RDC2017           | Ocean Reef Rd / Joondalup Dr Intersectio | 0                       | 882,800          | 0                 | 32,789     | 01/03/2016                 | 31/10/2016                            | 0 %        | Multi-Year Project |                 | Design Phase      |
| Program Sub Total |  | 96,249                  | 5,942,800        | 1,900,000         | 872,239    |                            |                                       |            |                    |                 |                   |

FPN      New Path Program

| Project Code      | Project Description                      | Additions & Adjustments | Budget Amount FY | Budget Amount YTD | CL Actuals | Proposed Construction Date | Proposed Construction Completion Date | % Complete | Comment             | Completion Date | Project Stage     |
|-------------------|--|-------------------------|------------------|-------------------|------------|----------------------------|---------------------------------------|------------|---------------------|-----------------|-------------------|
| FPN2048           | Strathyre Drive                          | 0                       | 26,000           | 0                 | 0          | 11/01/2016                 | 29/01/2016                            | 0 %        |                     |                 | Works Phased      |
| FPN2053           | Methuen Way                              | 0                       | 29,950           | 0                 | 67         | 11/01/2016                 | 29/01/2016                            | 0 %        |                     |                 | Works Phased      |
| FPN2085           | Spot Improvements to Signage             | 0                       | 10,000           | 3,500             | 4,914      | 01/07/2015                 | 17/06/2016                            | 50 %       |                     |                 | Works in Progress |
| FPN2116           | Marmion Ave Shared Path                  | 0                       | 22,000           | 2,000             | 18,845     | 01/12/2015                 | 24/12/2015                            | 100 %      | Actual Completion   | 14/09/2015      | Works Completed   |
| FPN2118           | Erindale Road Shared Path                | 0                       | 21,000           | 21,000            | 11,963     | 01/08/2015                 | 30/09/2015                            | 100 %      | Actual Completion   | 21/08/2015      | Works Completed   |
| FPN2141           | Trevally Way                             | 0                       | 13,000           | 13,000            | 11,363     | 01/08/2015                 | 30/09/2015                            | 100 %      | Actual Completion   | 30/07/2015      | Works Completed   |
| FPN2143           | Burns Beach / Iluka F'shore Widening     | 0                       | 50,000           | 50,000            | 47,562     | 02/11/2015                 | 30/11/2015                            | 100 %      | Actual Completion   | 18/09/2015      | Works Completed   |
| FPN2160           | Bus Shelter / Stops Program              | 0                       | 10,000           | 0                 | 0          | 01/05/2016                 | 31/05/2016                            | 0 %        |                     |                 | Works Phased      |
| FPN2161           | Walkability Plan Projects                | -8,397                  | 0                | 0                 | 30,054     | 01/07/2015                 | 30/09/2015                            | 100 %      | Actual Completion   | 18/12/2015      | Works Completed   |
| FPN2184           | Walkability - City Centre Signage        | -258                    | 74,665           | 44,665            | 41,040     | 01/10/2015                 | 24/06/2016                            | 0 %        |                     |                 | Design Phase      |
| FPN2185           | Walkability - Sunset Coast Trail Access  | 0                       | 50,000           | 0                 | -359       | 01/05/2016                 | 31/05/2016                            | 0 %        |                     |                 | Works Phased      |
| FPN2187           | Walkability - Sunset Coast Trail Signage | 52,157                  | 0                | 0                 | 12,698     | 01/07/2014                 | 24/12/2015                            | 0 %        |                     |                 | Design Phase      |
| FPN2188           | Walkability - Yellagonga Drinking Founta | 0                       | 15,000           | 15,000            | 16,025     | 01/11/2015                 | 30/11/2015                            | 100 %      | Actual Completion   | 30/11/2015      | Works Completed   |
| FPN2193           | Hepburn Avenue PBN Shared Path           | 0                       | 260,000          | 150,000           | 183,714    | 02/11/2015                 | 30/11/2015                            | 95 %       | Expected Completion | 15/02/2016      | Works in Progress |
| FPN2196           | Walkability - Collier Pass Ped Improveme | 0                       | 45,000           | 25,000            | 0          | 01/10/2015                 | 24/12/2015                            | 0 %        | Expected Completion | 24/06/2016      | Design Phase      |
| FPN2197           | Walkability - Minor Pedestrian Improveme | 0                       | 10,000           | 3,000             | 34         | 01/07/2015                 | 17/06/2016                            | 0 %        |                     |                 | Works Phased      |
| Program Sub Total |  | 43,502                  | 636,615          | 327,165           | 377,919    |                            |                                       |            |                     |                 |                   |

FPR      Path Replacement Program

| Project Code      | Project Description                    | Additions & Adjustments | Budget Amount FY | Budget Amount YTD | CL Actuals | Proposed Construction Date | Proposed Construction Completion Date | % Complete | Comment            | Completion Date | Project Stage     |
|-------------------|--|-------------------------|------------------|-------------------|------------|----------------------------|---------------------------------------|------------|--------------------|-----------------|-------------------|
| FPR2040           | Ocean View Road to Treetop Avenue      | 0                       | 11,000           | 11,000            | 10,417     | 01/07/2015                 | 31/08/2015                            | 100 %      | Actual Completion  | 19/08/2015      | Works Completed   |
| FPR2041           | Ocean View Road to Stillwater Way      | 0                       | 12,000           | 12,000            | 11,065     | 01/07/2015                 | 31/08/2015                            | 100 %      | Actual Completion  | 19/08/2015      | Works Completed   |
| FPR2059           | Poynter Drive to Ardtalla Court        | 0                       | 9,000            | 9,000             | 7,235      | 03/08/2015                 | 31/08/2015                            | 100 %      | Actual Completion  | 12/08/2015      | Works Completed   |
| FPR2066           | Dundee Court to Portree Way            | 0                       | 12,500           | 12,500            | 11,634     | 03/08/2015                 | 31/08/2015                            | 100 %      | Actual Completion  | 12/08/2015      | Works Completed   |
| FPR2067           | Alycon Place to Tafera Circle          | 0                       | 10,000           | 10,000            | 9,691      | 01/07/2015                 | 31/08/2015                            | 100 %      | Actual Completion  | 07/08/2015      | Works Completed   |
| FPR2068           | Sulina Place to PAW                    | 0                       | 15,000           | 15,000            | 14,081     | 01/07/2015                 | 31/08/2015                            | 100 %      | Actual Completion  | 10/07/2015      | Works Completed   |
| FPR2070           | Kallaroo Place to Koolama Place        | 0                       | 11,000           | 11,000            | 10,508     | 01/07/2015                 | 31/08/2015                            | 100 %      | Actual Completion  | 27/08/2015      | Works Completed   |
| FPR2087           | Nichols Place to Minchin Court         | 0                       | 10,000           | 10,000            | 10,083     | 01/07/2015                 | 31/08/2015                            | 100 %      | Actual Completion  | 27/08/2015      | Works Completed   |
| FPR2100           | Volute Place to Gardina Place          | 0                       | 12,000           | 12,000            | 11,388     | 01/07/2015                 | 31/08/2015                            | 100 %      | Actual Completion  | 03/07/2015      | Works Completed   |
| FPR2101           | Tellen Street to Triton Place          | 0                       | 13,000           | 13,000            | 12,017     | 01/07/2015                 | 31/08/2015                            | 100 %      | Actual Completion  | 03/07/2015      | Works Completed   |
| FPR2102           | Allenswood Road to Carew PI            | 0                       | 13,000           | 13,000            | 12,337     | 01/09/2015                 | 30/09/2015                            | 100 %      | Actual Completion  | 08/07/2015      | Works Completed   |
| FPR2103           | Allenswood Road to Birch Park          | 0                       | 6,000            | 6,000             | 6,112      | 01/09/2015                 | 30/09/2015                            | 100 %      | Actual Completion  | 08/07/2015      | Works Completed   |
| FPR2105           | Allenswood Road to Annato St           | 0                       | 13,500           | 13,500            | 12,216     | 01/10/2015                 | 30/10/2015                            | 100 %      | Actual Completion  | 07/07/2015      | Works Completed   |
| FPR2113           | Hilton Park                            | 0                       | 125,000          | 95,000            | 95,936     | 02/11/2015                 | 30/11/2015                            | 100 %      | Actual Completion  | 19/10/2015      | Works Completed   |
| FPR2116           | Barradine Way to Craigie Drive PAW     | 0                       | 12,000           | 0                 | 6,758      | 11/01/2016                 | 29/01/2016                            | 100 %      | Actual Completion  | 07/08/2015      | Works Completed   |
| FPR2117           | Barradine Way to Marmion Ave PAW       | 0                       | 7,000            | 0                 | 7,577      | 11/01/2016                 | 29/01/2016                            | 100 %      | Actual Completion  | 07/08/2015      | Works Completed   |
| FPR2143           | Camberwarra Marmion Underpass Footpath | 0                       | 40,000           | 0                 | 28,088     | 11/01/2016                 | 29/01/2016                            | 100 %      | Actual Completion  | 31/08/2015      | Works Completed   |
| FPR2156           | Shared Path Renewal & Resurfacing      | 0                       | 27,000           | 13,250            | 54,395     | 01/07/2015                 | 17/06/2016                            | 60 %       |                    |                 | Works in Progress |
| FPR2167           | Robertson Road Cycleway Path Upgrade   | 0                       | 0                | 0                 | 45,905     | 01/03/2016                 | 31/08/2016                            | 0 %        | Multi-Year Project |                 | Quotation Phase   |
| Program Sub Total |  | 0                       | 359,000          | 256,250           | 377,444    |                            |                                       |            |                    |                 |                   |



**SWD      Stormwater Drainage Program**

| Project Code      | Project Description                     | Additions & Adjustments | Budget Amount FY | Budget Amount YTD | CL Actuals | Proposed Construction Date | Proposed Construction Completion Date | % Complete | Comment                 | Completion Date | Project Stage        |
|-------------------|---|-------------------------|------------------|-------------------|------------|----------------------------|---------------------------------------|------------|-------------------------|-----------------|----------------------|
| SWD2001           | Stormwater Drainage Upgrades            | 0                       | 50,000           | 27,000            | 61,860     | 01/07/2015                 | 30/06/2016                            | 10 %       |                         |                 | Works in Progress    |
| SWD2073           | Ford Street Sump Catchment Improvements | 0                       | 40,000           | 0                 | 432        | 01/04/2016                 | 29/04/2016                            | 0 %        |                         |                 | Investigation Phase  |
| SWD2074           | 18 Cliverton Court - Property Flooding  | 0                       | 0                | 0                 | 134        | 01/04/2015                 | 31/05/2015                            | 100 %      | Project Completed 14/15 | 30/06/2015      | Works Completed      |
| SWD2075           | Barlee Place Drainage Upgrade           | 0                       | 20,000           | 0                 | 10,397     | 01/03/2016                 | 31/03/2016                            | 100 %      | Actual Completion       | 15/09/2015      | Works Completed      |
| SWD2123           | Cade Place Drainage Upgrade             | 0                       | 21,000           | 18,000            | 20,373     | 02/11/2015                 | 30/11/2015                            | 100 %      | Actual Completion       | 16/10/2015      | Works Completed      |
| SWD2130           | Keans Avenue Drainage Upgrade           | 0                       | 25,000           | 25,000            | 23,280     | 01/08/2015                 | 31/08/2015                            | 100 %      | Actual Completion       | 28/08/2015      | Works Completed      |
| SWD2132           | Webb Place Drainage Upgrade             | 0                       | 20,000           | 0                 | 713        | 01/02/2016                 | 29/02/2016                            | 0 %        |                         |                 | Design Phase         |
| SWD2135           | Edna Way Drainage Upgrade               | 0                       | 25,000           | 25,000            | 40,891     | 01/10/2015                 | 30/10/2015                            | 100 %      | Actual Completion       | 16/10/2015      | Works Completed      |
| SWD2136           | Doveridge Drive Minor Drainage Upgrade  | 0                       | 5,000            | 1,000             | 7,831      | 01/12/2015                 | 24/12/2015                            | 100 %      | Actual Completion       | 28/08/2015      | Works Completed      |
| SWD2137           | Juniper Way Minor Drainage Upgrade      | 0                       | 23,000           | 18,000            | 20,339     | 02/11/2015                 | 30/11/2015                            | 100 %      | Actual Completion       | 28/08/2015      | Works Completed      |
| SWD2141           | Barker Road Drainage Upgrade            | 0                       | 19,000           | 0                 | 229        | 01/02/2016                 | 29/02/2016                            | 0 %        |                         |                 | Quotation Phase      |
| SWD2142           | Hughes Court Drainage Upgrade           | 0                       | 14,000           | 14,000            | 9,217      | 01/10/2015                 | 30/10/2015                            | 100 %      | Actual Completion       | 28/08/2015      | Works Completed      |
| SWD2143           | Gosse Road Drainage Upgrade             | 0                       | 20,000           | 20,000            | 12,784     | 01/09/2015                 | 30/09/2015                            | 100 %      | Actual Completion       | 28/07/2015      | Works Completed      |
| SWD2148           | Beaumont Park Catchment Improvements    | 0                       | 70,000           | 0                 | 102        | 01/02/2016                 | 29/02/2016                            | 0 %        |                         |                 | Investigation Phase  |
| SWD2150           | Blackall Drive Minor Drainage Upgrade   | 0                       | 15,000           | 15,000            | 20,465     | 01/09/2015                 | 30/09/2015                            | 100 %      | Actual Completion       | 20/08/2015      | Works Completed      |
| SWD2151           | Penistone Park Sump Beautification      | 0                       | 200,000          | 0                 | 169        | 01/03/2016                 | 29/05/2016                            | 0 %        |                         |                 | Concept Design Futur |
| SWD2154           | Parkinson Place Drainage Upgrade        | 0                       | 25,000           | 25,000            | 22,857     | 01/08/2015                 | 31/08/2015                            | 100 %      | Actual Completion       | 28/07/2015      | Works Completed      |
| Program Sub Total |   | 0                       | 592,000          | 188,000           | 252,073    |                            |                                       |            |                         |                 |                      |

**STL      Lighting Program**

| Project Code      | Project Description                      | Additions & Adjustments | Budget Amount FY | Budget Amount YTD | CL Actuals | Proposed Construction Date | Proposed Construction Completion Date | % Complete | Comment            | Completion Date | Project Stage     |
|-------------------|--|-------------------------|------------------|-------------------|------------|----------------------------|---------------------------------------|------------|--------------------|-----------------|-------------------|
| STL2002           | Path & Public Access Way Lighting        | 0                       | 25,000           | 12,500            | 9,130      | 01/07/2015                 | 17/06/2016                            | 25 %       |                    |                 | Works in Progress |
| STL2003           | Joondalup City Centre Lighting           | 516,456                 | 1,450,000        | 0                 | 203,414    | 01/02/2016                 | 30/06/2018                            | 0 %        | Multi-Year Project |                 | Tender Phase      |
| STL2005           | Arterial & Urban Road Street Lighting    | 0                       | 20,000           | 10,500            | 17,518     | 01/07/2015                 | 17/06/2016                            | 0 %        |                    |                 | Works in Progress |
| STL2040           | Craigie Leisure Centre Path and Car Park | 0                       | 155,000          | 0                 | 16,825     | 01/03/2016                 | 31/05/2016                            | 10 %       |                    |                 | Design Phase      |
| STL2041           | Hilton Park Laneway Pathway Lighting     | 0                       | 45,000           | 0                 | 25,235     | 01/02/2016                 | 31/03/2016                            | 100 %      | Actual Completion  | 23/10/2015      | Works Completed   |
| STL2042           | Caledonia Park PAW lighting              | 0                       | 40,000           | 30,000            | 4,997      | 02/11/2015                 | 15/04/2016                            | 50 %       |                    |                 | Works Programed   |
| STL2046           | Pathway Lighting from Mertz Court to Tay | 0                       | 20,000           | 20,000            | 16,737     | 01/10/2015                 | 30/11/2015                            | 100 %      | Actual Completion  | 30/11/2015      | Works Programed   |
| STL2047           | Chichester Park - Floodlight Upgrade     | 0                       | 702,045          | 0                 | 11,702     | 01/02/2016                 | 31/05/2016                            | 0 %        |                    |                 | Works Programed   |
| STL2052           | Floodlight & Pole Replacement Program    | 0                       | 75,000           | 40,000            | 40,654     | 11/01/2016                 | 31/05/2016                            | 80 %       |                    |                 | Works Programed   |
| STL2054           | Ocean Reef Park Floodlight/Cricket Upgra | 0                       | 502,638          | 500               | 18,550     | 01/02/2016                 | 31/05/2016                            | 0 %        |                    |                 | Works Programed   |
| STL2058           | Windermere Park Power Upgrade MYR        | 36,212                  | 0                | 0                 | 22,388     | 13/03/2015                 | 24/12/2015                            | 100 %      | Actual Completion  | 16/10/2015      | Works Completed   |
| Program Sub Total |  | 552,668                 | 3,034,683        | 113,500           | 387,149    |                            |                                       |            |                    |                 |                   |

**RPR      Road Preservation & Resurfacing Program**

| Project Code | Project Description                     | Additions & Adjustments | Budget Amount FY | Budget Amount YTD | CL Actuals | Proposed Construction Date | Proposed Construction Completion Date | % Complete | Comment | Completion Date | Project Stage     |
|--------------|---|-------------------------|------------------|-------------------|------------|----------------------------|---------------------------------------|------------|---------|-----------------|-------------------|
| RPR2002      | Cracksealing & Patching Works City Wide | 0                       | 200,000          | 100,000           | 118,298    | 01/07/2015                 | 17/06/2016                            | 60 %       |         |                 | Works in Progress |
| RPR2004      | Road Preservation & Resurfacing Program | 0                       | 140,000          | 0                 | 0          | 04/01/2016                 | 31/03/2016                            | 0 %        |         |                 | Works Phased      |
| RPR2005      | Parking Surfaces Renewal Program        | 0                       | 25,000           | 13,000            | 0          | 01/07/2015                 | 31/05/2016                            | 0 %        |         |                 | Works Phased      |
| RPR2010      | Surface Rejuvenation Treatment Projects | 0                       | 122,626          | 80,000            | 0          | 01/07/2015                 | 31/05/2016                            | 0 %        |         |                 | Works Phased      |
| RPR2011      | Renewal Works for FGG Roads             | 0                       | 75,000           | 42,000            | 0          | 01/07/2015                 | 31/05/2016                            | 0 %        |         |                 | Works Phased      |

| Project Code | Project Description                      | Additions & Adjustments | Budget Amount FY | Budget Amount YTD | CL Actuals | Proposed Construction Date | Proposed Construction Completion Date | % Complete | Comment                 | Completion Date | Project Stage     |
|--------------|--|-------------------------|------------------|-------------------|------------|----------------------------|---------------------------------------|------------|-------------------------|-----------------|-------------------|
| RPR2345      | Buckie Court                             | 0                       | 18,000           | 0                 | 24,851     | 04/01/2016                 | 31/03/2016                            | 80 %       |                         |                 | Works in Progress |
| RPR2392      | Pyrus Street                             | 0                       | 47,000           | 47,000            | 57,698     | 01/07/2015                 | 30/09/2015                            | 100 %      | Actual Completion       | 18/09/2015      | Works Completed   |
| RPR2397      | Gilbert Rd - Sullivan Rd to Marmion Ave  | 0                       | 144,000          | 144,000           | 129,266    | 01/07/2015                 | 30/09/2015                            | 100 %      | Actual Completion       | 30/09/2015      | Works Completed   |
| RPR2400      | Trochidae Way                            | 0                       | 101,232          | 101,232           | 114,274    | 01/07/2015                 | 30/09/2015                            | 100 %      | Actual Completion       | 06/08/2015      | Works Completed   |
| RPR2404      | Mallaig Place                            | 0                       | 19,000           | 0                 | 25,679     | 04/01/2016                 | 31/03/2016                            | 80 %       |                         |                 | Works in Progress |
| RPR2409      | Fin Court                                | 0                       | 16,000           | 0                 | 622        | 04/01/2016                 | 31/03/2016                            | 0 %        |                         |                 | Works in Progress |
| RPR2413      | Natica Place                             | 0                       | 94,464           | 94,464            | 66,030     | 01/07/2015                 | 30/09/2015                            | 100 %      | Actual Completion       | 17/08/2015      | Works Completed   |
| RPR2418      | Prefect Place                            | 0                       | 18,000           | 0                 | 445        | 01/04/2016                 | 24/06/2016                            | 0 %        |                         |                 | Works Phased      |
| RPR2419      | Edna Way                                 | 0                       | 128,772          | 88,772            | 132,519    | 01/10/2015                 | 24/12/2015                            | 100 %      | Actual Completion       | 06/11/2015      | Works Completed   |
| RPR2420      | Dux Court                                | 0                       | 9,000            | 0                 | 0          | 01/04/2016                 | 24/06/2016                            | 0 %        |                         |                 | Works Phased      |
| RPR2421      | Cringle Street                           | 0                       | 38,000           | 33,000            | 84,107     | 01/10/2015                 | 24/12/2015                            | 100 %      | Actual Completion       | 20/11/2015      | Works Completed   |
| RPR2422      | Swanson Way - 280m to Venturi            | 0                       | 42,000           | 0                 | 62,246     | 04/01/2016                 | 31/03/2016                            | 80 %       |                         |                 | Works in Progress |
| RPR2436      | Walter Padbury / Blackwattle Roundabout  | 0                       | 35,000           | 0                 | 0          | 01/04/2016                 | 17/06/2016                            | 0 %        |                         |                 | Works Phased      |
| RPR2437      | Rowan Place                              | 0                       | 21,000           | 0                 | 0          | 01/04/2016                 | 17/06/2016                            | 0 %        |                         |                 | Works Phased      |
| RPR2438      | Kerior Street                            | 0                       | 66,000           | 0                 | 0          | 01/04/2016                 | 17/06/2016                            | 0 %        |                         |                 | Works Phased      |
| RPR2453      | Yulema Street                            | 0                       | 75,600           | 0                 | 0          | 01/04/2016                 | 17/06/2016                            | 0 %        |                         |                 | Works Phased      |
| RPR2454      | Tellen Street                            | 0                       | 135,000          | 0                 | 0          | 01/04/2016                 | 17/06/2016                            | 0 %        |                         |                 | Works Phased      |
| RPR2455      | Truslove Way                             | 0                       | 135,000          | 135,000           | 133,859    | 01/07/2015                 | 30/09/2015                            | 100 %      | Actual Completion       | 22/09/2015      | Works Completed   |
| RPR2456      | Lucine Court                             | 0                       | 20,000           | 19,000            | 23,396     | 01/10/2015                 | 24/12/2015                            | 100 %      | Actual Completion       | 07/11/2015      | Works Completed   |
| RPR2457      | Pioneer Drive                            | 0                       | 152,000          | 152,000           | 147,202    | 01/07/2015                 | 30/09/2015                            | 100 %      | Actual Completion       | 15/08/2015      | Works Completed   |
| RPR2458      | Stott Way                                | 0                       | 85,000           | 85,000            | 85,385     | 01/07/2015                 | 30/09/2015                            | 100 %      | Actual Completion       | 21/09/2015      | Works Completed   |
| RPR2459      | Ranger Trail                             | 0                       | 80,000           | 80,000            | 80,130     | 01/07/2015                 | 30/09/2015                            | 100 %      | Actual Completion       | 11/08/2015      | Works Completed   |
| RPR2460      | Lysander Dr - Caridean St (W) to Wayfare | 0                       | 191,520          | 121,520           | 183,218    | 01/10/2015                 | 24/12/2015                            | 100 %      | Actual Completion       | 27/11/2015      | Works Completed   |
| RPR2465      | Clayton Close                            | 0                       | 12,000           | 12,000            | 14,190     | 01/07/2015                 | 30/06/2016                            | 100 %      | Actual Completion       | 04/12/2015      | Works Completed   |
| RPR2470      | Sycamore Dr - Scadden St to Strathyre Dr | 0                       | 67,000           | 67,000            | 70,083     | 01/10/2015                 | 24/12/2015                            | 100 %      | Actual Completion       | 29/09/2015      | Works Completed   |
| RPR2472      | Wooramel Street                          | 0                       | 23,000           | 21,000            | 48,764     | 01/10/2015                 | 24/12/2015                            | 100 %      | Actual Completion       | 20/11/2015      | Works Completed   |
| RPR2480      | Coyle Rd - Adelaide Circ (W) to Cul-De-S | 0                       | 132,000          | 132,000           | 79,267     | 01/07/2015                 | 30/09/2015                            | 100 %      | Actual Completion       | 24/07/2015      | Works Completed   |
| RPR2483      | Wanbrow Way                              | 0                       | 127,000          | 87,000            | 126,408    | 01/10/2015                 | 24/12/2015                            | 100 %      | Actual Completion       | 02/11/2015      | Works Completed   |
| RPR2490      | Stephens Street                          | 0                       | 17,000           | 0                 | 0          | 01/04/2016                 | 24/06/2016                            | 0 %        |                         |                 | Works Phased      |
| RPR2497      | Williams Place                           | 0                       | 11,000           | 0                 | 0          | 01/04/2016                 | 24/06/2016                            | 0 %        |                         |                 | Works Phased      |
| RPR2506      | James Cook Park Carpark - Green Road     | 0                       | 50,000           | 0                 | 1,260      | 01/04/2016                 | 17/06/2016                            | 10 %       |                         |                 | Works in Progress |
| RPR2573      | Eddystone Ave - Craigie Drv to Perilya R | -40,774                 | 0                | 0                 | 3,777      | 01/01/2015                 | 27/02/2015                            | 100 %      | Project Completed 14/15 | 23/03/2015      | Works Completed   |
| RPR2574      | Flinders Ave - Waterford Drv to Mawson C | -13,325                 | 0                | 0                 | 0          | 01/01/2015                 | 27/02/2015                            | 100 %      | Project Completed 14/15 | 27/02/2015      | Works Completed   |
| RPR2577      | West Coast Drv - Beach Rd to The Plaza   | -120,112                | 0                | 0                 | 10,980     | 01/03/2015                 | 30/06/2015                            | 100 %      | Project Completed 14/15 | 14/05/2015      | Works Completed   |
| RPR2585      | Althaea Way                              | 0                       | 95,694           | 95,694            | 57,325     | 01/07/2015                 | 30/09/2015                            | 100 %      | Actual Completion       | 22/08/2015      | Works Completed   |
| RPR2586      | Pirra Court                              | 0                       | 23,000           | 13,000            | 17,635     | 01/10/2015                 | 24/12/2015                            | 100 %      | Actual Completion       | 04/12/2015      | Works Completed   |
| RPR2588      | Fig Court                                | 0                       | 20,000           | 13,000            | 6,340      | 01/10/2015                 | 24/12/2015                            | 100 %      | Actual Completion       | 04/12/2015      | Works Completed   |
| RPR2589      | Lilac Gardens                            | 0                       | 26,000           | 0                 | 17,209     | 04/01/2016                 | 31/03/2016                            | 80 %       |                         |                 | Works in Progress |
| RPR2590      | Merivale Way - Allenswood Rd to Carew Pl | 0                       | 132,000          | 132,000           | 37,424     | 01/07/2015                 | 30/09/2015                            | 100 %      | Actual Completion       | 01/08/2015      | Works Completed   |
| RPR2591      | Aldis Street                             | 0                       | 42,000           | 42,000            | 27,449     | 01/07/2015                 | 30/09/2015                            | 100 %      | Actual Completion       | 01/08/2015      | Works Completed   |
| RPR2592      | Venus Way                                | 0                       | 60,000           | 60,000            | 29,371     | 01/07/2015                 | 30/09/2015                            | 100 %      | Actual Completion       | 03/08/2015      | Works Completed   |
| RPR2593      | Parkinson Place                          | 0                       | 117,000          | 117,000           | 88,861     | 01/07/2015                 | 30/09/2015                            | 100 %      | Actual Completion       | 08/09/2015      | Works Completed   |
| RPR2594      | Delaware Place                           | 0                       | 55,000           | 55,000            | 58,489     | 01/07/2015                 | 30/09/2015                            | 100 %      | Actual Completion       | 07/09/2015      | Works Completed   |
| RPR2595      | Webb Place                               | 0                       | 34,000           | 0                 | 0          | 04/01/2016                 | 31/03/2016                            | 0 %        |                         |                 | Works Programed   |
| RPR2596      | McWhae Road                              | 0                       | 72,000           | 0                 | 18,468     | 04/01/2016                 | 31/03/2016                            | 80 %       |                         |                 | Works in Progress |
| RPR2597      | Fenton Way                               | 0                       | 145,000          | 0                 | 43,817     | 04/01/2016                 | 31/03/2016                            | 80 %       |                         |                 | Works in Progress |
| RPR2598      | Loxham Place                             | 0                       | 52,000           | 0                 | 0          | 04/01/2016                 | 31/03/2016                            | 0 %        |                         |                 | Works Programed   |

| Project Code | Project Description                      | Additions & Adjustments | Budget Amount FY | Budget Amount YTD | CL Actuals | Proposed Construction Date | Proposed Construction Completion Date | % Complete | Comment           | Completion Date | Project Stage     |
|--------------|--|-------------------------|------------------|-------------------|------------|----------------------------|---------------------------------------|------------|-------------------|-----------------|-------------------|
| RPR2599      | Kenton Court                             | 0                       | 37,000           | 0                 | 0          | 04/01/2016                 | 31/03/2016                            | 0 %        |                   |                 | Works Phased      |
| RPR2600      | Strathyre Drive                          | 0                       | 117,000          | 97,000            | 115,508    | 01/10/2015                 | 24/12/2015                            | 100 %      | Actual Completion | 29/10/2015      | Works Completed   |
| RPR2602      | Orkney Rd - Coolibah Drv to Gilmerton Wy | 0                       | 61,000           | 0                 | 0          | 04/01/2016                 | 31/03/2016                            | 0 %        |                   |                 | Works Programed   |
| RPR2603      | Orkney Rd - Liwara Pl to Verticordia Pl  | 0                       | 20,000           | 0                 | 713        | 04/01/2016                 | 31/03/2016                            | 0 %        |                   |                 | Works Programed   |
| RPR2604      | Tupelo Court                             | 0                       | 24,000           | 0                 | 0          | 04/01/2016                 | 31/03/2016                            | 0 %        |                   |                 | Works Programed   |
| RPR2605      | Mair Place                               | 0                       | 28,000           | 28,000            | 27,079     | 01/07/2015                 | 30/09/2015                            | 100 %      | Actual Completion | 27/08/2015      | Works Completed   |
| RPR2606      | Whitfords Nodes South Carpark            | 0                       | 200,000          | 0                 | 0          | 01/04/2016                 | 17/06/2016                            | 0 %        |                   |                 | Works Phased      |
| RPR2609      | Alyxia Place                             | 0                       | 23,000           | 19,000            | 24,627     | 01/10/2015                 | 24/12/2015                            | 100 %      | Actual Completion | 29/10/2015      | Works Completed   |
| RPR2611      | Arnisdale Rd - Merrick Wy to Cul-De-Sac  | 0                       | 117,000          | 117,000           | 91,425     | 01/07/2015                 | 30/09/2015                            | 100 %      | Actual Completion | 29/09/2015      | Works Completed   |
| RPR2617      | Half Penny Lane - San Pedro Turn to #9   | 0                       | 50,000           | 0                 | 30,811     | 01/04/2016                 | 17/06/2016                            | 100 %      | Actual Completion | 09/12/2015      | Works Completed   |
| RPR2631      | Elmhurst Wy - Cockman Rd to Hester Wy    | 0                       | 31,000           | 0                 | 0          | 04/01/2016                 | 31/03/2016                            | 0 %        |                   |                 | Works Programed   |
| RPR2635      | Taree Court                              | 0                       | 47,000           | 0                 | 0          | 04/01/2016                 | 31/03/2016                            | 0 %        |                   |                 | Works Programed   |
| RPR2636      | Adamson Close                            | 0                       | 23,000           | 0                 | 0          | 04/01/2016                 | 31/03/2016                            | 0 %        |                   |                 | Works Phased      |
| RPR2638      | Boloka Rise                              | 0                       | 52,000           | 0                 | 0          | 04/01/2016                 | 31/03/2016                            | 0 %        |                   |                 | Works Phased      |
| RPR2639      | Bromley Place                            | 0                       | 39,000           | 0                 | 0          | 04/01/2016                 | 31/03/2016                            | 0 %        |                   |                 | Works Phased      |
| RPR2640      | Genoa Court                              | 0                       | 27,000           | 0                 | 0          | 04/01/2016                 | 31/03/2016                            | 0 %        |                   |                 | Works Phased      |
| RPR2641      | Inglis Gardens                           | 0                       | 31,000           | 0                 | 0          | 04/01/2016                 | 31/03/2016                            | 0 %        |                   |                 | Works Phased      |
| RPR2645      | Richmond Place                           | 0                       | 26,000           | 0                 | 0          | 04/01/2016                 | 31/03/2016                            | 0 %        |                   |                 | Works Phased      |
| RPR2647      | Jasmine Close                            | 0                       | 36,000           | 22,000            | 26,067     | 01/10/2015                 | 24/12/2015                            | 100 %      | Actual Completion | 03/12/2015      | Works Completed   |
| RPR2650      | Traine Court                             | 0                       | 10,000           | 10,000            | 36,590     | 01/10/2015                 | 24/12/2015                            | 100 %      | Actual Completion | 13/11/2015      | Works Completed   |
| RPR2651      | Bearing Parade                           | 0                       | 159,422          | 159,422           | 127,605    | 01/07/2015                 | 30/09/2015                            | 100 %      | Actual Completion | 31/08/2015      | Works Completed   |
| RPR2652      | Neap Lane                                | 0                       | 23,000           | 23,000            | 29,274     | 01/07/2015                 | 30/09/2015                            | 100 %      | Actual Completion | 31/08/2015      | Works Completed   |
| RPR2654      | Contour Drv - Meridian Drv to Precision  | 0                       | 150,000          | 150,000           | 130,205    | 01/07/2015                 | 30/09/2015                            | 100 %      | Actual Completion | 21/08/2015      | Works Completed   |
| RPR2655      | Gardinia Place                           | 0                       | 17,000           | 0                 | 0          | 01/04/2016                 | 17/06/2016                            | 0 %        |                   |                 | Works Phased      |
| RPR2657      | Link Way                                 | 0                       | 21,000           | 21,000            | 28,593     | 01/07/2015                 | 30/09/2015                            | 100 %      | Actual Completion | 12/08/2015      | Works Completed   |
| RPR2658      | Mussell Place                            | 0                       | 31,000           | 0                 | 0          | 01/04/2016                 | 17/06/2016                            | 0 %        |                   |                 | Works Phased      |
| RPR2661      | Grand Boulevard / Collier Pass Intersect | 0                       | 75,000           | 0                 | 1,538      | 04/01/2016                 | 31/03/2016                            | 10 %       |                   |                 | Works in Progress |
| RPR2662      | Golders Green Lane                       | 0                       | 54,000           | 54,000            | 52,643     | 01/07/2015                 | 30/09/2015                            | 100 %      | Actual Completion | 12/08/2015      | Works Completed   |
| RPR2663      | Sandalford Drive                         | 0                       | 75,000           | 0                 | 0          | 01/04/2016                 | 10/06/2016                            | 0 %        |                   |                 | Works Phased      |
| RPR2664      | Barnsbury Road                           | 0                       | 91,000           | 0                 | 42,418     | 04/01/2016                 | 31/03/2016                            | 80 %       |                   |                 | Works in Progress |
| RPR2665      | Warwick Community Centre Carpark         | 0                       | 19,000           | 0                 | 392        | 01/04/2016                 | 10/06/2016                            | 0 %        |                   |                 | Works Phased      |
| RPR2666      | Pelican Place                            | 0                       | 17,000           | 16,000            | 20,909     | 01/10/2015                 | 24/12/2015                            | 100 %      | Actual Completion | 26/10/2015      | Works Completed   |
| RPR2667      | Barridale Drv / Dalmain St Roundabout    | 0                       | 75,000           | 0                 | 25,293     | 04/01/2016                 | 31/03/2016                            | 80 %       |                   |                 | Works in Progress |
| RPR2668      | Bramble Place                            | 0                       | 28,000           | 0                 | 21,324     | 04/01/2016                 | 31/03/2016                            | 80 %       |                   |                 | Works in Progress |
| RPR2669      | Parkinson Court                          | 0                       | 16,000           | 16,000            | 25,146     | 01/07/2015                 | 30/09/2015                            | 100 %      | Actual Completion | 08/09/2015      | Works Completed   |
| RPR2670      | Scott Place                              | 0                       | 71,000           | 0                 | 0          | 01/04/2016                 | 10/06/2016                            | 0 %        |                   |                 | Works Programed   |
| RPR2671      | Bootie Place                             | 0                       | 25,000           | 25,000            | 26,240     | 01/07/2015                 | 30/09/2015                            | 100 %      | Actual Completion | 09/09/2015      | Works Completed   |
| RPR2672      | Mulga Place                              | 0                       | 34,000           | 24,000            | 30,978     | 01/10/2015                 | 24/12/2015                            | 100 %      | Actual Completion | 01/12/2015      | Works Completed   |
| RPR2673      | Coolibah Drv - Redgum St to Protea St    | 0                       | 67,000           | 32,000            | 27,648     | 01/10/2015                 | 24/12/2015                            | 100 %      | Actual Completion | 20/12/2015      | Works Completed   |
| RPR2674      | Coolibah Drv - Pimelia Ct to Redgum St   | 0                       | 47,000           | 27,000            | 19,240     | 01/10/2015                 | 24/12/2015                            | 100 %      | Actual Completion | 20/12/2015      | Works Completed   |
| RPR2675      | Coolibah Drv - Callistemon St to Pimelia | 0                       | 33,413           | 23,413            | 24,498     | 01/10/2015                 | 24/12/2015                            | 100 %      | Actual Completion | 20/12/2015      | Works Completed   |
| RPR2676      | Coolibah Drv - Warwick Rd to Calecstasia | 0                       | 96,603           | 46,603            | 27,607     | 01/10/2015                 | 24/12/2015                            | 100 %      | Actual Completion | 20/12/2015      | Works Completed   |
| RPR2677      | Marmion Ave / Mermaid Way (Northbound La | 0                       | 44,439           | 23,439            | 44,201     | 01/10/2015                 | 24/12/2015                            | 100 %      | Actual Completion | 21/11/2015      | Works Completed   |
| RPR2678      | Marmion Ave / Windlass Ave (Northbound L | 0                       | 57,789           | 37,789            | 25,185     | 01/10/2015                 | 24/12/2015                            | 100 %      | Actual Completion | 29/11/2015      | Works Completed   |
| RPR2679      | Marmion Ave - Windlass Ave to Prince Reg | 0                       | 67,158           | 37,158            | 35,288     | 01/10/2015                 | 24/12/2015                            | 100 %      | Actual Completion | 29/11/2015      | Works Completed   |
| RPR2680      | Marmion Ave - Prince Regent Drv to Hodge | 0                       | 193,426          | 113,426           | 133,039    | 01/10/2015                 | 24/12/2015                            | 100 %      | Actual Completion | 21/11/2015      | Works Completed   |
| RPR2681      | Ocean Reef Rd - Trappers Drv to Boundary | 0                       | 130,275          | 65,275            | 91,223     | 01/10/2015                 | 24/12/2015                            | 100 %      | Actual Completion | 01/12/2015      | Works Completed   |

| Project Code      | Project Description                      | Additions & Adjustments | Budget Amount FY | Budget Amount YTD | CL Actuals | Proposed Construction Date | Proposed Construction Completion Date | % Complete | Comment           | Completion Date | Project Stage   |
|-------------------|--|-------------------------|------------------|-------------------|------------|----------------------------|---------------------------------------|------------|-------------------|-----------------|-----------------|
| RPR2682           | Ocean Reef Rd - Admiral Grv to Pacific W | 0                       | 154,996          | 84,996            | 142,043    | 01/10/2015                 | 24/12/2015                            | 100 %      | Actual Completion | 31/10/2015      | Works Completed |
| RPR2683           | Whitfords Ave / Marmion Ave (Eastside We | 0                       | 33,662           | 19,662            | 50,614     | 01/10/2015                 | 24/12/2015                            | 100 %      | Actual Completion | 30/11/2015      | Works Completed |
| RPR2684           | Whitfords Ave / Marmion Ave (Eastside Ea | 0                       | 13,000           | 8,000             | 31,102     | 01/10/2015                 | 24/12/2015                            | 100 %      | Actual Completion | 30/11/2015      | Works Completed |
| RPR2685           | Trappers Drive Parking Bays              | 0                       | 75,000           | 0                 | 0          | 01/04/2016                 | 17/06/2016                            | 0 %        |                   |                 | Works Phased    |
| RPR2686           | The Grove                                | 0                       | 8,000            | 0                 | 0          | 01/04/2016                 | 17/06/2016                            | 0 %        |                   |                 | Works Phased    |
| RPR2687           | Kylena Glade                             | 0                       | 19,000           | 0                 | 0          | 01/04/2016                 | 17/06/2016                            | 0 %        |                   |                 | Works Phased    |
| RPR2688           | Dunblane Court                           | 0                       | 12,000           | 0                 | 0          | 01/04/2016                 | 17/06/2016                            | 0 %        |                   |                 | Works Phased    |
| RPR2689           | Trapeze Court                            | 0                       | 21,000           | 0                 | 0          | 01/04/2016                 | 17/06/2016                            | 0 %        |                   |                 | Works Phased    |
| RPR2690           | Cleave Court                             | 0                       | 10,000           | 0                 | 0          | 01/04/2016                 | 17/06/2016                            | 0 %        |                   |                 | Works Phased    |
| RPR2691           | Menzies Green                            | 0                       | 11,000           | 0                 | 0          | 01/04/2016                 | 17/06/2016                            | 0 %        |                   |                 | Works Phased    |
| RPR2692           | Samson Court                             | 0                       | 17,000           | 0                 | 0          | 01/04/2016                 | 24/06/2016                            | 0 %        |                   |                 | Works Phased    |
| RPR2693           | Calthorpe Place                          | 0                       | 27,000           | 0                 | 0          | 04/01/2016                 | 31/03/2016                            | 0 %        |                   |                 | Works Phased    |
| RPR2694           | Ivory Court                              | 0                       | 18,000           | 0                 | 0          | 01/04/2016                 | 17/06/2016                            | 0 %        |                   |                 | Works Phased    |
| RPR2695           | Greengate Court                          | 0                       | 4,000            | 0                 | 0          | 01/04/2016                 | 17/06/2016                            | 0 %        |                   |                 | Works Phased    |
| RPR2696           | Cowrie Place                             | 0                       | 18,000           | 0                 | 0          | 01/04/2016                 | 02/04/2016                            | 0 %        |                   |                 | Works Phased    |
| RPR2697           | Livonia Place                            | 0                       | 14,000           | 0                 | 0          | 01/04/2016                 | 02/04/2016                            | 0 %        |                   |                 | Works Phased    |
| Program Sub Total |  | -174,211                | 6,720,091        | 3,482,865         | 3,793,411  |                            |                                       |            |                   |                 |                 |

**BRD      Bridges Program**

| Project Code      | Project Description                      | Additions & Adjustments | Budget Amount FY | Budget Amount YTD | CL Actuals | Proposed Construction Date | Proposed Construction Completion Date | % Complete | Comment | Completion Date | Project Stage       |
|-------------------|--|-------------------------|------------------|-------------------|------------|----------------------------|---------------------------------------|------------|---------|-----------------|---------------------|
| BRD2000           | Bridge & Underpass Refurbishment Program | 0                       | 25,000           | 14,000            | 18,177     | 01/07/2015                 | 24/12/2015                            | 0 %        |         |                 | Investigation Phase |
| Program Sub Total |  | 0                       | 25,000           | 14,000            | 18,177     |                            |                                       |            |         |                 |                     |

BCW

Major Building Works Program

| Project Code      | Project Description                      | Additions & Adjustments | Budget Amount FY | Budget Amount YTD | CL Actuals | Proposed Construction Date | Proposed Construction Completion Date | % Complete | Comment            | Completion Date | Project Stage     |
|-------------------|--|-------------------------|------------------|-------------------|------------|----------------------------|---------------------------------------|------------|--------------------|-----------------|-------------------|
| BCW2001           | Joondalup Administration Centre Carpet R | 0                       | 30,000           | 0                 | 10,120     | 01/02/2016                 | 31/03/2016                            | 100 %      | Actual Completion  | 23/10/2015      | Works Completed   |
| BCW2025           | Building Capital Works Various Locations | 0                       | 230,266          | 100,000           | 123,380    | 01/07/2015                 | 30/06/2016                            | 50 %       |                    |                 | Works in Progress |
| BCW2100           | Joondalup Civic Chambers Painting        | 0                       | 10,000           | 0                 | 10,000     | 01/12/2015                 | 29/01/2016                            | 100 %      | Actual Completion  | 16/09/2015      | Works Completed   |
| BCW2106           | Beaumaris Sports Association (Iluka Spor | 4,566                   | 430,000          | 430,000           | 369,193    | 01/07/2015                 | 30/11/2015                            | 100 %      | Actual Completion  | 27/11/2015      | Works Completed   |
| BCW2308           | Joondalup Library Air-Con                | 0                       | 84,190           | 45,000            | 14,069     | 01/09/2015                 | 29/04/2016                            | 25 %       |                    |                 | Works in Progress |
| BCW2333           | Hazardous Materials Management           | 0                       | 50,000           | 50,000            | 52,744     | 01/09/2015                 | 24/12/2015                            | 100 %      | Actual Completion  | 09/11/2015      | Works Completed   |
| BCW2382           | Compliance and Access & Inclusion Works  | -100,000                | 130,000          | 130,000           | 35,238     | 01/10/2015                 | 24/12/2015                            | 100 %      | Actual Completion  | 20/11/2015      | Works Completed   |
| BCW2413           | Deep Sewer connections of City Buildings | 211,244                 | 0                | 0                 | 253,756    | 01/03/2015                 | 30/06/2015                            | 100 %      | Actual Completion  | 27/07/2015      | Works Completed   |
| BCW2450           | Environmental Inititiatives              | 88,875                  | 50,000           | 30,000            | 105,836    | 01/10/2015                 | 31/05/2016                            | 50 %       |                    |                 | Works in Progress |
| BCW2468           | Craigie Leisure Centre Mini Make-over    | 0                       | 197,544          | 122,000           | 122,681    | 01/09/2015                 | 31/05/2016                            | 65 %       |                    |                 | Works in Progress |
| BCW2482           | Coastal Toilets Sewer Upgrades           | 0                       | 200,000          | 20,000            | 15,163     | 01/05/2016                 | 31/08/2016                            | 0 %        | Multi-Year Project |                 | Design Phase      |
| BCW2505           | Craigie Leisure Centre Air-Con Replaceme | 0                       | 80,000           | 80,000            | 68,213     | 01/10/2015                 | 30/10/2015                            | 100 %      | Actual Completion  | 07/11/2015      | Works Completed   |
| BCW2507           | Iluka Sports Club Air-Con Replacement    | 0                       | 50,000           | 50,000            | 16,880     | 01/09/2015                 | 30/09/2015                            | 100 %      | Actual Completion  | 05/10/2015      | Works Completed   |
| BCW2520           | Timberlane Park Hall Upgrade             | 0                       | 785,643          | 100,000           | 80,811     | 01/11/2015                 | 24/06/2016                            | 5 %        |                    |                 | Works in Progress |
| BCW2524           | Kingsley Clubrooms                       | 0                       | 650,000          | 50,000            | 26,359     | 11/01/2016                 | 30/06/2016                            | 0 %        |                    |                 | Tender Phase      |
| BCW2554           | Joondalup Library and Civic Centre - Lif | 0                       | 758,000          | 0                 | 193,580    | 10/01/2016                 | 10/06/2016                            | 0 %        |                    |                 | Works Programed   |
| BCW2569           | SES Winton Road                          | 0                       | 824,000          | 35,000            | 37,660     | 04/01/2016                 | 10/06/2016                            | 0 %        |                    |                 | Tender Phase      |
| Program Sub Total |  | 204,685                 | 4,559,643        | 1,242,000         | 1,535,682  |                            |                                       |            |                    |                 |                   |

MPP

Major Projects Program

| Project Code      | Project Description                      | Additions & Adjustments | Budget Amount FY | Budget Amount YTD | CL Actuals | Proposed Construction Date | Proposed Construction Completion Date | % Complete | Comment             | Completion Date | Project Stage        |
|-------------------|--|-------------------------|------------------|-------------------|------------|----------------------------|---------------------------------------|------------|---------------------|-----------------|----------------------|
| MPP2027           | Marmion Foreshore Parking (MAAC)         | 133,065                 | 2,159,598        | 1,850,000         | 2,175,211  | 01/04/2015                 | 31/10/2015                            | 95 %       | Expected Completion | 29/02/2016      | Works in Progress    |
| MPP2031           | Bramston Park Facility                   | -126,252                | 2,731,328        | 1,250,000         | 1,825,717  | 01/05/2015                 | 31/03/2016                            | 80 %       |                     |                 | Works in Progress    |
| MPP2035           | Multi Storey Car Park - Boas Ave         | 2,186,761               | 2,047,530        | 2,047,530         | 3,574,135  | 01/07/2014                 | 26/10/2015                            | 100 %      | Actual Completion   | 25/11/2015      | Works Completed      |
| MPP2037           | Ocean Reef Boat Harbour Floating Jetties | -239,759                | 600,000          | 600,000           | 306,916    | 07/04/2015                 | 30/10/2015                            | 100 %      | Actual Completion   | 17/09/2015      | Works Completed      |
| MPP2047           | Penistone Park - Facility Redevelopment  | 286,328                 | 240,000          | 0                 | 0          | 01/07/2017                 | 24/12/2017                            | 0 %        | Multi-Year Project  |                 | Project Under Review |
| MPP2054           | Synthetic Hockey Project                 | 130,292                 | 900,000          | 210,000           | 265,382    | 01/03/2017                 | 31/03/2017                            | 0 %        | Multi-Year Project  |                 | Tender Phase         |
| MPP2060           | Mullaloo SLSC Refurbishment              | 0                       | 1,700,000        | 0                 | 0          | 01/07/2015                 | 30/06/2016                            | 0 %        |                     |                 | Investigation Phase  |
| Program Sub Total |  | 2,370,435               | 10,378,456       | 5,957,530         | 8,147,360  |                            |                                       |            |                     |                 |                      |

|             |           |            |            |            |
|-------------|-----------|------------|------------|------------|
| Grand Total | 3,126,125 | 39,739,288 | 16,081,060 | 17,983,416 |
|-------------|-----------|------------|------------|------------|