

# **City of Joondalup Public Open Space Framework**

# Contents

<b>Introduction.....</b>	<b>3</b>
Objectives .....	3
<b>Planning context.....</b>	<b>4</b>
Related City plans and strategies.....	4
Related local laws and policy documents .....	5
<b>Classification of public open space .....</b>	<b>7</b>
Sports Park.....	9
Recreation Park .....	14
Urban Landscaping.....	19
Natural Area.....	24
<b>Conclusion .....</b>	<b>29</b>
Review.....	29
<b>Appendix 1 — Infrastructure.....</b>	<b>30</b>
<b>Appendix 2 — Infrastructure by classification.....</b>	<b>76</b>

# Introduction

The City of Joondalup manages a range of public open space located on property owned or managed by the City. Public open space plays an integral role in supporting health, recreation and leisure in the community, and is highly valued as contributing to suburban aesthetics, neighbourhood identity, cultural heritage and tourism. Public open space also plays an important role in supporting local ecological and biodiversity values, as well as contributing to good air and water quality.

The Public Open Space Framework will guide the allocation of infrastructure assets across the different types of public open space within the City. The aim of the framework is to achieve transparent and accountable decision-making, underpinned by the principles of equity and consistency. If public open space infrastructure assets are appropriately allocated, the City is able to maintain higher quality infrastructure that meets the requirements of its community. This is preferable to maintaining surplus assets that are under-utilised and renewed less frequently.

## Objectives

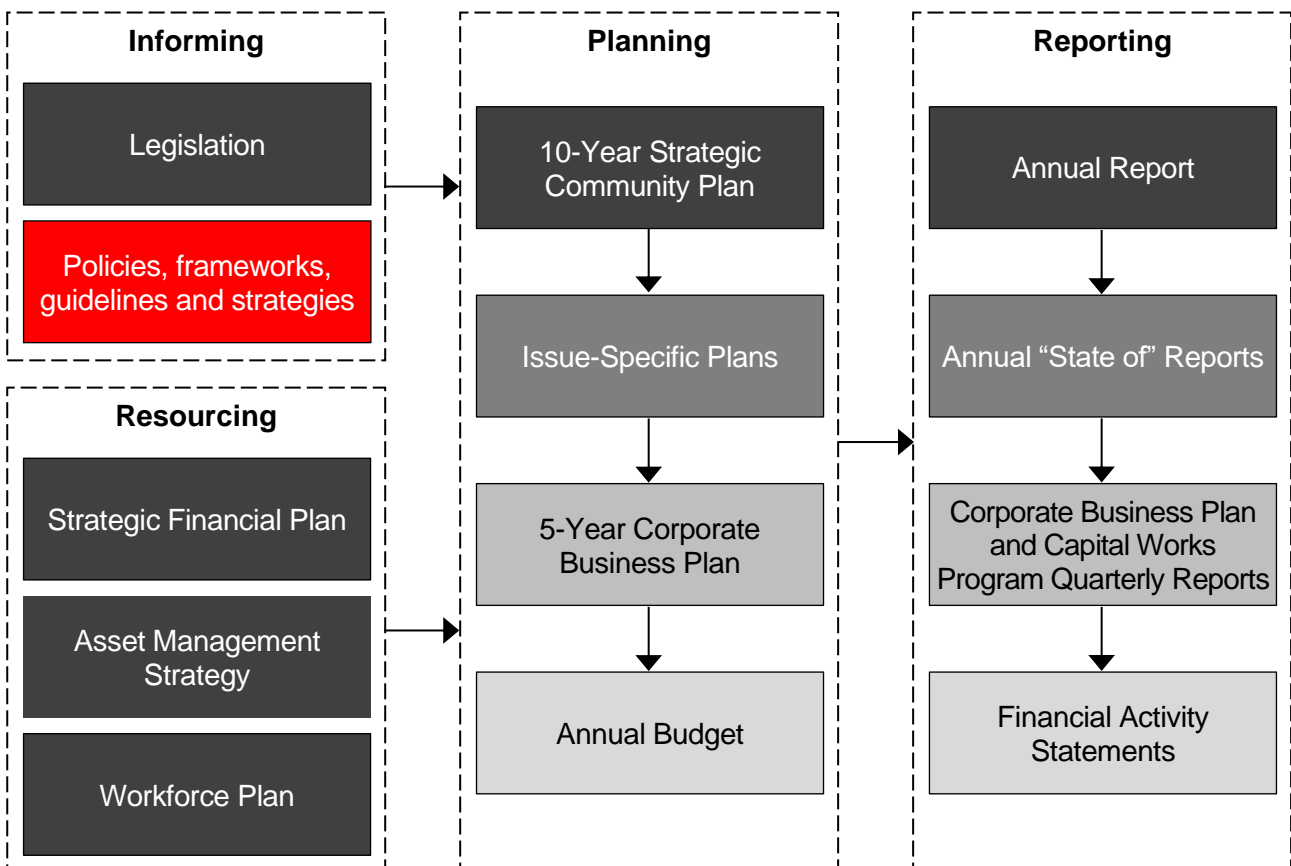
- i. To classify public open space according to primary function and manner of use.
- ii. To identify appropriate infrastructure for each type of public open space.
- iii. To inform levels of service and maintenance schedules for each type of public open space.

# Planning context

The Public Open Space Classification Framework sits within the City's broader Integrated Planning and Reporting Framework as an *Informing* document. The Framework guides decision-making for the management of public open space assets and informs the strategic objectives of a number of *Planning* documents, as outlined. The Framework also aligns with State Sporting Association facility and infrastructure requirements.

The diagram below illustrates the relationship between the relevant strategic and operational plans as they pertain to public open space asset management.

**Figure 1: Planning context**



## Related City plans and strategies

### Access and Inclusion Plan

The Access and Inclusion Plan guides the City's approach to ensuring people of all abilities and backgrounds have equal access to services and facilities within the City. The plan aims to fulfil the City's commitment to inclusivity, including people with disability, their families and carers, and people from culturally and linguistically diverse backgrounds.

### Bike Plan

The Bike Plan guides the City's strategic approach towards being recognised as a bike friendly city where riding a bike is considered an easy and convenient way to get around, part of a normal everyday healthy lifestyle and where all types and abilities of riders are catered for. The plan aims to support bike riding within the City by taking a strategic and holistic approach to promoting and supporting bike riding.

## Bushfire Risk Management Plan

The Bushfire Risk Management Plan guides the management of bushfire risk within the City in order to protect people, infrastructure and the environment. The plan aims to provide a coordinated and efficient approach towards the identification, assessment and treatment of infrastructure assets exposed to bushfire related risk within the City.

## Coastal Infrastructure Adaptation Plan

The Coastal Infrastructure Adaptation Plan guides the City's response to the future impacts of climate change along the coastline. The plan aims to ensure the City is adequately prepared to adapt to current and future coastal hazards, and to ensure risk to City infrastructure and assets is minimised.

## Environment Plan

The Environment Plan guides the City's strategic response to local environmental pressures. The plan aims to ensure that the City's operations are delivered in an environmentally sustainable manner and that the City takes measures to effectively influences positive environmental behaviours within the community.

## Outdoor Youth Recreation Strategy

The Outdoor Youth Recreation Strategy guides the future provision of facilities for outdoor youth recreation within the City. The strategy aims to take a strategic view on the future location of facilities and to strategically plan for the rationalisation of existing facilities (where appropriate) and the possible future development of new facilities in line with community need.

## Property Management Framework

The Property Management Framework define the classifications for which City owned and managed property is held, establishes the categories and associated principles under which City owned and managed property may be used and occupied, and promotes equitable, effective and sustainable management practices for the use and occupation of City owned and managed property.

## Weed Management Plan

The Weed Management Plan guides the ongoing weed management of the City's public open space and details an integrated weed management approach which prevents, monitors and controls the spread of weeds in the City. The plan aims to protect native vegetation and ecosystems in natural areas, as well as the amenity, functionality and aesthetics of public open space.

## Related local laws and policy documents

### Alfresco Activities Local Planning Policy

The Alfresco Activities Local Planning Policy outlines the City's guides the placement and function of alfresco activities to ensure high-quality, pedestrian-friendly, street-activated development that does not impact on the movement of pedestrians and vehicles, and do not impact on future works required within the road reserve.

## Animals Local Law 1999

The Animals Local Law 1999, under the *Dog Act 1976*, provides for the regulation, control and management of the keeping of animals within the City of Joondalup. This includes dog exercise areas and animals in public places.

## Asset Management Policy

The Asset Management Policy outlines a framework for the long-term management of City infrastructure assets that is aligned to the City's broader strategic objectives and reflects the public purpose intent of asset provision by the City.

## Beach Management Activities Policy

The Beach Management Activities Policy guides the use, enjoyment, maintenance, protection and preservation of the City's coastline and coastal facilities.

## Circus Policy

The Circus Policy outlines the City's position on circuses operating on City-owned or managed land that use live performing exotic animals.

## City Playground Shade Policy

The City Playground Shade Policy guides the circumstances where artificial shade is to be provided on City managed playgrounds, including those that cannot be effectively shaded naturally, experience frequent, ongoing use, and are co-located with other infrastructure assets that encourage long-stay usage.

## Dedicated Car Parking for Seniors and Parents with Prams Policy

The Dedicated Car Parking for Seniors and Parents with Prams Policy outlines the City's position on the establishment of dedicated parking bays for seniors and parents with prams in car parks at City-managed facilities and on non-residential privately-owned land.

## Environmentally Sustainable Design for City Buildings Policy

The Environmentally Sustainable Design for City Buildings Policy facilitates the integration of environmentally sustainable design principles into the siting, design and construction of new City-owned or City-managed buildings, renovation projects and retro-fitting.

## High Risk Bookings in Community Venues Policy

The High Risk Bookings in Community Venues Policy ensures the responsible use of the City's venues by placing additional conditions on bookings the City assesses to be high risk.

## Local Government and Public Property Local Law 2014

The Local Government and Public Property Local Law 2014 provides for the regulation, control and management of activities and facilities on local government and public property within the district. This includes permitted activities, behaviour, fees and charges, trade, and enforcement.

## Memorials in Public Open Spaces Policy

The Memorials in Public Open Spaces Policy provides guidance on the eligibility, assessment and installation of memorials for deceased persons in public open spaces within the City of Joondalup.

## Public Art Policy

The Public Art Policy guides the delivery of public art projects that contribute to creating a sense of place, promote the expression of local identity, and reflect on the shared values of the community. The policy outlines the application of the State Government's Percent for Art Scheme for all refurbishments of City-owned properties or new developments where the overall project costs are over \$1,000,000.

## Requests for New or Capital Upgrades to Existing Community Venues Policy

The Requests for New or Capital Upgrades to Existing Community Venues Policy ensures a coordinated approach to the assessment and approval of requests for new or capital upgrades to existing community venues.

## Requests for Sale of Public Open Space Reserves Local Planning Policy

The Requests for Sale of Public Open Space Reserves Local Planning Policy establishes guidelines for the assessment of requests for sale of public open space reserves.

## Specified Area Rating Policy

The Specified Area Rating Policy provides guidance on the circumstances under which a Specified Area Rate may be applied and the arrangements for the management and control of the Specified Area Rate collected.

## Vandalism to Vegetation on City Land Policy

The Vandalism to Vegetation on City Land Policy provides a system for restoring vandalised or damaged vegetation on City land and establishes a mechanism for penalising offenders.

## Venue Hire Fees and Charges Policy

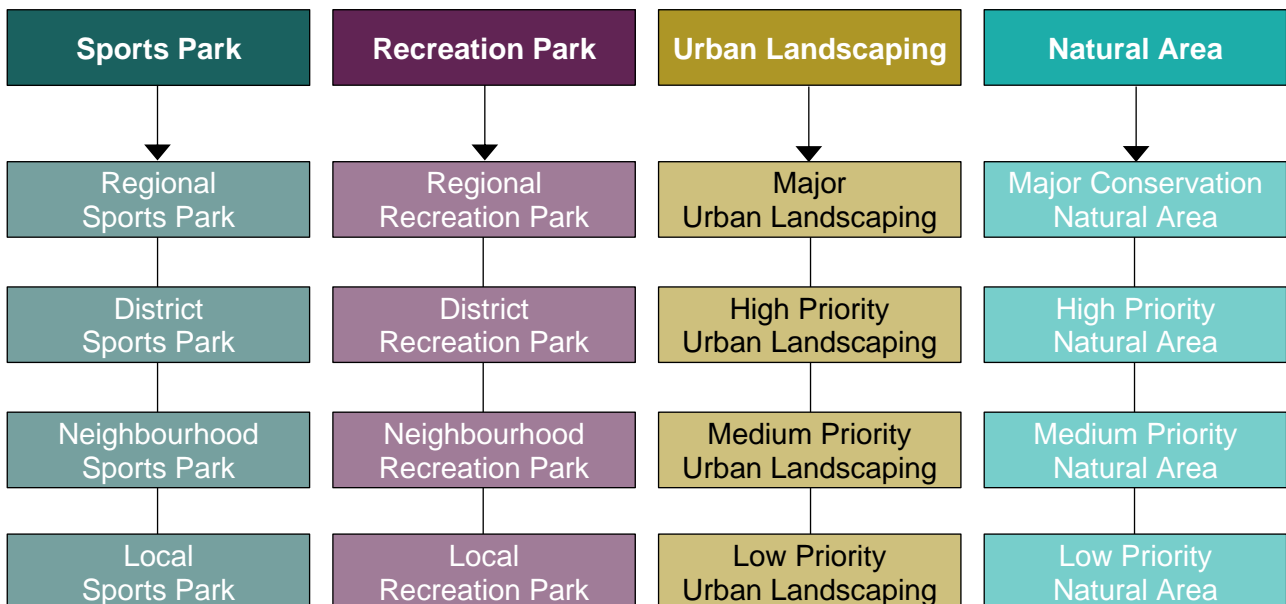
The Venue Hire Fees and Charges Policy provides guidance on determining the fees and charges for the hire of City-managed venues, and ensures facility hire subsidies are applied in a consistent, transparent and equitable manner.

# Classification of public open space

The City has a broad range of public open spaces and each of these has a different primary function and usage type which impacts the manner in which it is maintained, and the type of infrastructure assets installed. To simplify the task of managing public open spaces located within the City's boundaries, similar spaces are classified into groups to provide a logical and strategic approach. All public open spaces owned or managed by the City fall into one of the four classifications below.

Recommended and optional infrastructure for each classification type are listed. Whilst these recommendations are intended to provide some clarity for future infrastructure provision, it is recognised that a number of public open spaces in the City have infrastructure installed that may no longer be considered appropriate for the primary function and usage type of that public open space. Correspondingly, some smaller public open spaces may be identified for additional infrastructure if they are located in suburbs where larger parks may not exist. Appropriate discretion should therefore be applied when dealing with such anomalies, and consolidation or decommissioning of inappropriate infrastructure assets should be considered.

**Figure 2: Classification of public open space**





## Sports Park

Sports Parks are public open spaces predominantly used for formal, structured sports activities, such as team competitions, physical skill development and training. They are generally designed to accommodate the playing surface and infrastructure requirements of specific sports. People attend these public open spaces with the primary purpose of engaging in organised sports activity, training, competition or viewing as a spectator.

## Regional Sports Park

Regional Sports Parks are suitable for larger-scale, significant or regional sports events where multiple sports matches can be undertaken simultaneously. These parks accommodate at least three oval sports fields or six rectangular sports fields, and also accommodate playing courts and/or bowling greens. Regional Sports Parks attract users from the whole of the City and surrounding local governments.

<b>Size:</b>	At least 15 hectares
<b>Catchment:</b>	More than 2 kilometres (more than 5 minutes drive)



Example: Percy Doyle Reserve, Duncraig

### Recommended infrastructure:

- Bench seating
- Car parking
- Drinking fountain
- Fencing (park)
- Irrigation
- Lighting (security and amenity)
- Lighting (sports floodlighting)
- Path network
- Signage (park name)
- Sports facility (large)
- Sports infrastructure (permanent)
- Sports infrastructure (temporary)
- Waste bin

### Optional infrastructure:

- Artificial shade
- Barbeque
- Basketball pad
- Closed-circuit television (CCTV)
- Dog exercise area (fenced)
- Dog facilities
- Fencing (special)
- Fitness equipment
- Monument/memorial (permanent)
- Picnic structure
- Play space (regional)
- Public art
- Recreation infrastructure
- Signage (interpretive)
- Signage (wayfinding)
- Skate/BMX facility (dedicated)
- Skate/BMX facility (incidental)
- Storage facility (free-standing)

## District Sports Park

District Sports Parks are suitable for significant sports events where more than more one sports match can be undertaken simultaneously. These parks accommodate at least two oval sports fields or four rectangular sports fields, or accommodate one sports field and either playing courts and/or bowling greens. District Sports Parks attract users from the whole of the City, especially surrounding suburbs.

<b>Size:</b>	Less than 15 hectares
<b>Catchment:</b>	2 kilometres (5 minutes drive)



Example: Iluka District Open Space, Iluka

### Recommended infrastructure:

- Bench seating
- Car parking
- Drinking fountain
- Fencing (park)
- Irrigation
- Lighting (security and amenity)
- Lighting (sports floodlighting)
- Path network
- Signage (park name)
- Sports infrastructure (permanent)
- Waste bin

At least one of:

- Sports facility (large)
- Sports facility (small)
- Toilet/changeroom facility

### Optional infrastructure:

- Artificial shade
- Barbeque
- Basketball pad
- Closed-circuit television (CCTV)
- Dog exercise area (fenced)
- Dog facilities
- Fencing (special)
- Fitness equipment
- Monument/memorial (permanent)
- Picnic structure
- Play space (district)
- Public art
- Recreation infrastructure
- Signage (interpretive)
- Signage (wayfinding)
- Skate/BMX facility (dedicated)
- Skate/BMX facility (incidental)
- Sports infrastructure (temporary)
- Storage facility (free-standing)



## Neighbourhood Sports Park

Neighbourhood Sports Parks are suitable for smaller-scale sports events where between one and two sports matches can be undertaken simultaneously. These parks accommodate at least one oval sports field or two rectangular sports fields. Neighbourhood Sports Parks attract users from within the suburb and surrounding suburbs.

<b>Size:</b>	Less than 7 hectares
<b>Catchment:</b>	800 metres (10 minutes walk)



Example: Barrisdale Park, Kingsley

### Recommended infrastructure:

- Bench seating
- Fencing (park)
- Irrigation
- Lighting (sports floodlighting)
- Path network
- Signage (park name)
- Waste bin

At least one of:

- Sports facility (small)
- Toilet/changeroom facility
- Toilet facility (free-standing)

### Optional infrastructure:

- Artificial shade
- Barbeque
- Basketball pad
- Car parking
- Closed-circuit television (CCTV)
- Dog facilities
- Drinking fountain
- Fencing (special)
- Lighting (security and amenity)
- Monument/memorial (permanent)
- Picnic structure
- Play space (neighbourhood)
- Public art
- Recreation infrastructure
- Signage (wayfinding)
- Skate/BMX facility (incidental)
- Sports infrastructure (permanent)
- Sports infrastructure (temporary)
- Storage facility (free-standing)

## Local Sports Park

Local Sports Parks are suitable for local sports training and social day time matches. These parks accommodate one sports field or playing courts. Local Sports Parks attract users from within the suburb and surrounding suburbs.

<b>Size:</b>	Less than 5 hectares
<b>Catchment:</b>	Up to 400 metres (5 minutes walk)



*Example: Parkside Park, Woodvale*

### Recommended infrastructure:

- Bench seating
- Fencing (park)
- Irrigation
- Signage (park name)

### Optional infrastructure:

- Closed-circuit television (CCTV)
- Dog facilities
- Drinking fountain
- Fencing (special)
- Lighting (security and amenity)
- Lighting (sports floodlighting)
- Monument/memorial (permanent)
- Path network
- Play space (local)
- Recreation infrastructure
- Skate/BMX facility (incidental)
- Sports infrastructure (permanent)
- Sports infrastructure (temporary)
- Storage facility (free-standing)
- Toilet/changeroom facility
- Toilet facility (free-standing)
- Waste bin

## Recreation Park

Recreation Parks are public open spaces predominantly used for informal recreation activities, such as walking, jogging, picnicking and play. They are generally designed to accommodate low-wear applications and contain recreation-based infrastructure. People attend these public open spaces with the primary purpose of engaging in social and leisure activities.



## Regional Recreation Park

Regional Recreation Parks are located near a natural place of interest, such as a lake or beach, or located near commercial activities, such as shopping or a café/restaurant. These parks accommodate multiple distinct zones where different types of recreation can be undertaken simultaneously. Regional Recreation Parks encourage long-stay usage for recreational activities and attract users from the whole of the City and surrounding local governments.

<b>Catchment:</b>	More than 2 kilometres (more than 5 minutes drive)
<b>Users:</b>	Whole of City and surrounding local governments
<b>Recreation zone(s):</b>	At least 2



Example: Hillarys Beach Park, Hillarys

### Recommended infrastructure:

- Barbeque
- Bench seating
- Car parking
- Drinking fountain
- Fencing (park)
- Irrigation
- Lighting (security and amenity)
- Path network
- Picnic structure
- Play space (regional)
- Signage (park name)
- Waste bin

At least one of:

- Community facility (large)
- Toilet/changeroom facility
- Toilet facility (free-standing)

### Optional infrastructure:

- Artificial shade
- Basketball pad
- Closed-circuit television (CCTV)
- Dog exercise area (fenced)
- Dog facilities
- Fencing (special)
- Fitness equipment
- Lighting (sports floodlighting)
- Lookout/viewing platform
- Monument/memorial (permanent)
- Outdoor shower
- Public art
- Recreation infrastructure
- Signage (interpretive)
- Signage (wayfinding)
- Skate/BMX facility (dedicated)
- Skate/BMX facility (incidental)
- Storage facility (free-standing)

## District Recreation Park

District Recreation Parks may be located near a natural place of interest, such as a lake or beach, or located near commercial activities, such as shopping or a café/restaurant. These parks accommodate at least two distinct zones where different types of recreation can be undertaken simultaneously. District Recreation Parks encourage medium to long-stay usage for recreational activities and attract users from the whole of the City, especially surrounding suburbs.

<b>Catchment:</b>	2 kilometres (5 minutes drive)
<b>Users:</b>	Whole of City, especially surrounding suburbs
<b>Recreation zone(s):</b>	At least 2



Example: Delamere Park, Currumbine

### Recommended infrastructure:

- Barbeque
- Bench seating
- Fencing (park)
- Irrigation
- Lighting (security and amenity)
- Path network
- Picnic structure
- Play space (district)
- Signage (park name)
- Waste bin

### Optional infrastructure:

- Artificial shade
- Basketball pad
- Car parking
- Closed-circuit television (CCTV)
- Community facility (large)
- Community facility (small)
- Dog exercise area (fenced)
- Dog facilities
- Drinking fountain
- Fencing (special)
- Fitness equipment
- Lighting (sports floodlighting)
- Lookout/viewing platform
- Monument/memorial (permanent)
- Outdoor shower
- Public art
- Recreation infrastructure
- Signage (interpretive)
- Signage (wayfinding)
- Skate/BMX facility (dedicated)
- Skate/BMX facility (incidental)
- Toilet/changeroom facility
- Toilet facility (free-standing)



## Neighbourhood Recreation Park

Neighbourhood Recreation Parks are usually located within suburban areas. These parks accommodate one medium recreation zone. Neighbourhood Recreation Parks encourage short to medium-stay usage for recreational activities and attract users from the surrounding suburb.

**Catchment:** 800 metres (10 minutes walk)

**Users:** Surrounding suburb

**Recreation zone(s):** 1 medium



*Example: Menteith Park, Kinross*

### Recommended infrastructure:

- Fencing (park)
- Irrigation
- Signage (park name)

### Optional infrastructure:

- Artificial shade
- Barbeque
- Basketball pad
- Bench seating
- Closed-circuit television (CCTV)
- Community facility (small)
- Dog facilities
- Drinking fountain
- Fencing (special)
- Lighting (security and amenity)
- Lookout/viewing platform
- Monument/memorial (permanent)
- Outdoor shower
- Path network
- Picnic structure
- Play space (neighbourhood)
- Public art
- Recreation infrastructure
- Signage (wayfinding)
- Skate/BMX facility (incidental)
- Waste bin

## Local Recreation Park

Local Recreation Parks are usually located within suburban areas. These parks accommodate one small recreation zone. Local Recreation Parks encourage short-stay usage for recreational activities and attract users from the surrounding streets.

**Catchment:** 400 metres (5 minutes walk)

**Users:** Surrounding streets

**Recreation zone(s):** 1 small



*Example: Carr Park, Warwick*

### Recommended infrastructure:

- Fencing (park)
- Signage (park name)

### Optional infrastructure:

- Bench seating
- Closed-circuit television (CCTV)
- Dog facilities
- Fencing (special)
- Irrigation
- Lighting (security and amenity)
- Monument/memorial (permanent)
- Path network
- Play space (local)
- Recreation infrastructure
- Waste bin

## Urban Landscaping

Urban Landscaping areas are public open spaces predominantly used to contribute to visual amenity and suburban aesthetics. They can act as entry points to the City and include verges, medians and thoroughfares, as well as residual land.

## Major Urban Landscaping

Major Urban Landscaping includes large verges and medians located on major traffic routes into and out of the City and within the Joondalup City Centre. These areas act as visual indicators for major entry points and a welcome to residents and visitors. Major Urban Landscaping delivers a high level of visual amenity and an opportunity for public art.

**Location:** Major traffic routes into and out of the City  
Joondalup City Centre

**Purpose:** To welcome residents and visitors



Example: Joondalup Drive, Joondalup

### Recommended infrastructure:

- Car parking
- Irrigation

### Optional infrastructure:

- Bench seating
- Closed-circuit television (CCTV)
- Entry statement
- Fencing (special)
- Lighting (security and amenity)
- Path network
- Public art
- Signage (wayfinding)
- Skate/BMX facility (incidental)
- Waste bin



## High Priority Urban Landscaping

High Priority Urban Landscaping includes verges and medians located on high-level traffic routes, mostly centred around intersection nibs and arterial roads. These areas act as visual indicators for significant locations and help to foster a sense of place. High Priority Urban Landscaping delivers a high level of visual amenity and may provide an opportunity for public art.

**Location:** High-level traffic routes (mainly intersection nibs and arterial roads)

**Purpose:** To help foster a sense of place



Example: Ocean Reef Road, Edgewater/Woodvale

### Recommended infrastructure:

Nil

### Optional infrastructure:

- Bench seating
- Car parking
- Closed-circuit television (CCTV)
- Entry statement
- Fencing (special)
- Irrigation
- Lighting (security and amenity)
- Path network
- Public art
- Signage (wayfinding)
- Skate/BMX facility (incidental)
- Waste bin

## Medium Priority Urban Landscaping

Medium Priority Urban Landscaping includes verges, roundabouts and thoroughfares located on medium-level traffic routes in suburban areas. These landscaping areas provide vegetation and tree cover and help to mitigate the urban heat island effect. Medium Priority Urban Landscaping delivers a medium level of visual amenity and enhances local aesthetics.

**Location:** Medium-level traffic routes in suburban areas

**Purpose:** To provide vegetation and tree cover



*Example: Mullaloo Drive/Dampier Avenue, Mullaloo/Kallaroo*

### Recommended infrastructure:

Nil

### Optional infrastructure:

- Bench seating
- Closed-circuit television (CCTV)
- Fencing (special)
- Lighting (security and amenity)
- Path network
- Skate/BMX facility (incidental)
- Waste bin

## Low Priority Urban Landscaping

Low Priority Urban Landscaping includes verges, remnant land and minor thoroughfares located on low-level traffic routes in suburban areas, as well as extended verges adjacent to arterial or distributor roads. These areas provide some vegetation and may contain tree cover.

<b>Location:</b>	Low-level traffic routes in suburban areas Extended verges adjacent arterial or distributor roads
<b>Purpose:</b>	To provide some vegetation and tree cover



Example: Craigie Drive/Marmion Avenue, Craigie

### Recommended infrastructure:

Nil

### Optional infrastructure:

- Bench seating
- Closed-circuit television (CCTV)
- Fencing (special)
- Lighting (security and amenity)
- Path network
- Waste bin

## Natural Area

Natural Areas are public open spaces predominantly used to protect local ecological and biodiversity values. They can include bushland, coastal and wetland areas. These public open spaces can provide opportunities for low-impact recreational activities, such as walking, jogging or cycling. Natural Areas are managed to enable some recreational access while protecting local ecological and biodiversity values.



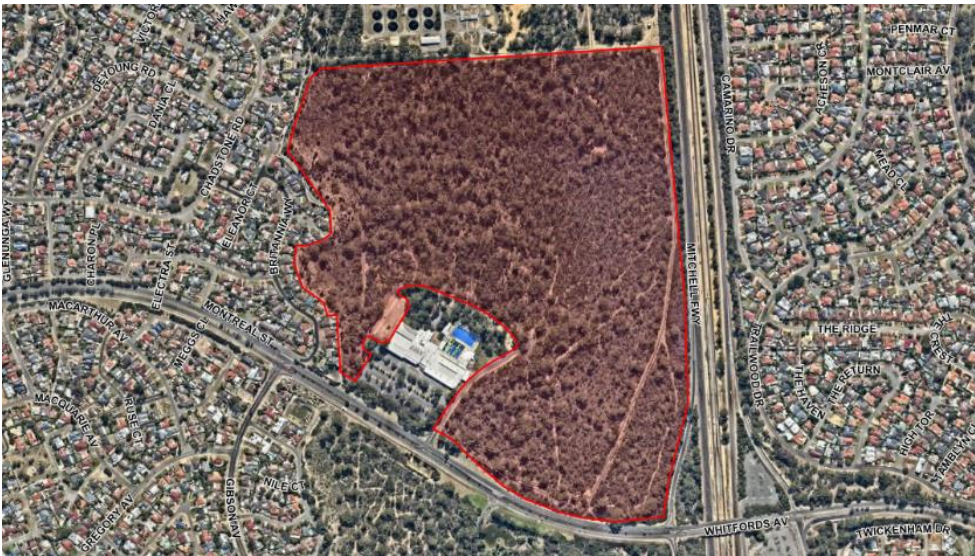
## Major Conservation Natural Area

Major Conservation Natural Areas are of very high conservation significance and include large areas of vegetation in very good or excellent condition. These areas are likely to contain threatened ecological communities or priority ecological communities. These areas are also likely to contain priority flora species or conservation-significant flora species. Conservation-significant fauna species are likely to use the site as habitat, and ecological linkages are likely to exist to other significant conservation areas. These areas are managed by individual Natural Area Management Plans.

**Size:** > 5 hectares

**Conservation significance:** Bush Forever/Protected under Metropolitan Region Scheme

**Vegetation condition:** Majority of the site in very good or better condition



Example: Craigie Open Space, Craigie

### Recommended infrastructure:

- Fencing (conservation)
- Path network
- Signage (interpretive)
- Signage (park name)
- Waste bin

### Optional infrastructure:

- Bench seating
- Car parking
- Closed-circuit television (CCTV)
- Dog facilities
- Drinking fountain
- Fencing (park)
- Fencing (special)
- Lighting (security and amenity)
- Lookout/viewing platform
- Monument/memorial (permanent)
- Outdoor shower
- Picnic structure
- Public art
- Recreation infrastructure
- Signage (wayfinding)
- Skate/BMX facility (incidental)
- Toilet facility (free-standing)

## High Priority Natural Area

High Priority Natural Areas are of high conservation significance and include large areas of vegetation in good or very good condition. These areas can contain threatened ecological communities or priority ecological communities. These areas can also contain priority flora species or conservation-significant flora species. Conservation-significant fauna species may use the site as habitat, and ecological linkages may exist to other significant conservation areas.

**Size:** > 0.5 hectares

**Conservation significance:** Protected under Metropolitan Region Scheme or Local Planning Scheme/Local Natural Area

**Vegetation condition:** Majority of the site in good condition



Example: Cranston Park, Kinross

### Recommended infrastructure:

- Fencing (conservation)
- Signage (park name)

### Optional infrastructure:

- Bench seating
- Closed-circuit television (CCTV)
- Fencing (park)
- Fencing (special)
- Lighting (security and amenity)
- Lookout/viewing platform
- Monument/memorial (permanent)
- Path network
- Signage (interpretive)
- Signage (wayfinding)
- Skate/BMX facility (incidental)
- Waste bin



## Medium Priority Natural Area

Medium Priority Natural Areas are of medium conservation significance and include large areas of vegetation in good condition, usually fragmented. These areas can contain various vegetation communities, and can also contain priority flora species or conservation-significant flora species. Conservation-significant fauna species may use the site as habitat, but ecological linkages are unlikely to exist to other significant conservation areas.

**Size:** > 0.1 hectares

**Conservation significance:** Protected under Local Planning Scheme/Local Natural Area

**Vegetation condition:** Site contains large portions of good vegetation, as well as degraded vegetation



Example: Huxley Park, Burns Beach

### Recommended infrastructure:

- Signage (park name)

### Optional infrastructure:

- Bench seating
- Closed-circuit television (CCTV)
- Fencing (conservation)
- Fencing (park)
- Fencing (special)
- Lighting (security and amenity)
- Path network
- Signage (interpretive)
- Signage (wayfinding)
- Skate/BMX facility (incidental)
- Waste bin

## Low Priority Natural Area

Low Priority Natural Areas are of low conservation significance and include areas of vegetation in good or degraded condition, usually fragmented. These areas can contain various vegetation communities, and can also contain priority flora species or conservation-significant flora species. Conservation-significant fauna species may use the site as habitat, but ecological linkages are unlikely to exist to other significant conservation areas.

**Size:** > 0.1 hectares

**Conservation significance:** Local Natural Area

**Vegetation condition:** Site contains portions of good vegetation, as well as large areas of degraded vegetation.



Example: Lookout Park, Edgewater

### Recommended infrastructure:

- Signage (park name)

### Optional infrastructure:

- Bench seating
- Closed-circuit television (CCTV)
- Fencing (conservation)
- Fencing (park)
- Fencing (special)
- Lighting (security and amenity)
- Path network
- Signage (interpretive)
- Waste bin

## Conclusion

The Public Open Space Framework will ensure that the community has access to quality public open space that reflects their needs now and into the future. It will also enable infrastructure to be managed into the long-term, taking into account the costs associated with renewing and maintaining public open space infrastructure to a high standard. An additional benefit of applying the framework is that infrastructure gaps will be more easily identifiable, which will facilitate the effective prioritisation of capital works programming. This will ensure public open space infrastructure management is planned, rather than reactive, to achieve a more cost-effective and sustainable approach to planning and maintenance.

## Review

The Public Open Space Framework is to be reviewed every 10 years with a minor review every 5 years. This aligns with the timeframes for capital works programming and natural area management plans.

# Appendix 1 — Infrastructure

## Artificial shade

Artificial shade provides shading to frequently-used play spaces and dedicated skate/BMX facilities by extending their hours of usage, particularly over the summer period. Due to the high number of play spaces in the City, it is not feasible to provide artificial shade for all. As such, artificial shade is supported for play spaces and dedicated skate/BMX facilities that cannot be effectively shaded naturally, experience frequent, ongoing use (especially from community groups and organisations), and are co-located with other infrastructure assets that encourage long-stay usage (such as barbeques, picnic structures and toilet facilities). An equal distribution of artificial shade is also preferred, with proximity to similar shaded facilities to inform consideration.

### Co-located infrastructure (required):

At least one of:

- Play space (regional)
- Play space (district)
- Play space (neighbourhood)
- Skate/BMX facility (dedicated)

### Complementary infrastructure:

Nil



Example: Seacrest Park, Sorrento



Example: Tom Simpson Park, Mullaloo

### Infrastructure by classification (R = Recommended; O = Optional; N = Not supported):

Sports Park	
Regional Sports Park	O
District Sports Park	O
Neighbourhood Sports Park	O
Local Sports Park	N
Urban Landscaping	
Major Urban Landscaping	N
High Priority Urban Landscaping	N
Medium Priority Urban Landscaping	N
Low Priority Urban Landscaping	N

Recreation Park	
Regional Recreation Park	O
District Recreation Park	O
Neighbourhood Recreation Park	O
Local Recreation Park	N
Natural Area	
Major Conservation Natural Area	N
High Priority Natural Area	N
Medium Priority Natural Area	N
Low Priority Natural Area	N



## Barbeque

Barbeques enable high quality and free picnicking opportunities across the City. Barbeques are supported in public open spaces that facilitate long-stay usage, host regular sporting games, contain a natural place of interest (such as a lake or beach), or are located within areas that support higher density housing. Public open spaces must also be able to support water infrastructure. Barbeques attached to sports facilities should be publicly-accessible and, where feasible, universally accessible design should be considered.

### Co-located infrastructure (required):

- Drinking fountain
- Lighting (security and amenity)
- Path network
- Picnic structure
- Waste bin

### Complementary infrastructure:

- Community facility (large)
- Community facility (small)
- Play space (regional)
- Play space (district)
- Play space (neighbourhood)
- Sports facility (large)
- Sports facility (small)
- Toilet/changeroom facility
- Toilet facility (free-standing)



Example: MacDonald Park, Padbury



Example: Juniper Park, Duncraig

### Infrastructure by classification (R = Recommended; O = Optional; N = Not supported):

Sports Park	
Regional Sports Park	O
District Sports Park	O
Neighbourhood Sports Park	O
Local Sports Park	N
Urban Landscaping	
Major Urban Landscaping	N
High Priority Urban Landscaping	N
Medium Priority Urban Landscaping	N
Low Priority Urban Landscaping	N

Recreation Park	
Regional Recreation Park	R
District Recreation Park	R
Neighbourhood Recreation Park	O
Local Recreation Park	N
Natural Area	
Major Conservation Natural Area	N
High Priority Natural Area	N
Medium Priority Natural Area	N
Low Priority Natural Area	N

## Basketball pad

Basketball pads provide community members with access to free, outdoor basketball opportunities in public open spaces. Basketball pads are supported in public open spaces where informal recreation activities are likely to occur, and which can accommodate an appropriate buffer offset to residential homes. Basketball pads should be designed to incorporate a minimum 1x1 basketball.

### Co-located infrastructure (required):

At least one of:

- Play space (regional)
- Play space (district)
- Play space (neighbourhood)

### Complementary infrastructure:

- Drinking fountain
- Lighting (security and amenity)
- Recreation infrastructure
- Skate/BMX (incidental)
- Sports infrastructure (permanent)
- Sports infrastructure (temporary)
- Waste bin



Example: Churton Park, Warwick



Example: Juniper Park, Duncraig

### Infrastructure by classification (R = Recommended; O = Optional; N = Not supported):

Sports Park	
Regional Sports Park	O
District Sports Park	O
Neighbourhood Sports Park	O
Local Sports Park	N
Urban Landscaping	
Major Urban Landscaping	N
High Priority Urban Landscaping	N
Medium Priority Urban Landscaping	N
Low Priority Urban Landscaping	N

Recreation Park	
Regional Recreation Park	O
District Recreation Park	O
Neighbourhood Recreation Park	O
Local Recreation Park	N
Natural Area	
Major Conservation Natural Area	N
High Priority Natural Area	N
Medium Priority Natural Area	N
Low Priority Natural Area	N



## Bench seating

Bench seating provides the opportunity for community members to relax or rest whilst recreating within public open space. Bench seating is supported in public open spaces where a rest stop may be beneficial (such as along a path network), or those that include a play space, or offer views of a recreation activity, sports activity, landscaping feature, or a natural place of interest (such as a lake or beach).

### Co-located infrastructure (required):

Nil

### Complementary infrastructure:

- Lookout/viewing platform
- Monument/memorial (permanent)
- Path network
- Play space (district)
- Play space (local)
- Play space (neighbourhood)
- Play space (regional)
- Recreation infrastructure
- Skate/BMX facility (dedicated)
- Sports infrastructure (permanent)
- Sports infrastructure (temporary)



Example: Castlecrag Park, Kallaroo



Example: Poynter Park, Duncraig

### Infrastructure by classification (R = Recommended; O = Optional; N = Not supported):

Sports Park	
Regional Sports Park	R
District Sports Park	R
Neighbourhood Sports Park	R
Local Sports Park	R
Urban Landscaping	
Major Urban Landscaping	O
High Priority Urban Landscaping	O
Medium Priority Urban Landscaping	O
Low Priority Urban Landscaping	O

Recreation Park	
Regional Recreation Park	R
District Recreation Park	R
Neighbourhood Recreation Park	O
Local Recreation Park	O
Natural Area	
Major Conservation Natural Area	O
High Priority Natural Area	O
Medium Priority Natural Area	O
Low Priority Natural Area	O

## Car parking

Car parking enables community members to visit public open spaces that are further than walking distance from their homes. Car parking, which includes both off-street parking and verge parking where bays have been formally marked, is supported in public open spaces that have large catchments and contain sports facilities, or other infrastructure that facilitates long-stay usage. Car parking is also supported in public open spaces that experience high usage, regardless of complementary infrastructure (such as along the coast). The City's Dedicated Car Parking for Seniors and Parents with Prams Policy outlines the City's position on the establishment of dedicated parking bays at City-managed facilities, including sports facilities.

### Co-located infrastructure (required):

- Lighting (security and amenity)

### Complementary infrastructure:

- Closed-circuit television (CCTV)
- Community facility (large)
- Community facility (small)
- Dog exercise area (fenced)
- Picnic structure
- Recreation infrastructure
- Skate/BMX facility (dedicated)
- Sports facility (large)
- Sports facility (small)
- Sports infrastructure (permanent)
- Sports infrastructure (temporary)
- Toilet/changeroom facility
- Toilet facility (free-standing)



Example: Warrigal Park, Greenwood



Example: Plumdale Park, Woodvale

### Infrastructure by classification (R = Recommended; O = Optional; N = Not supported):

Sports Park	
Regional Sports Park	R
District Sports Park	R
Neighbourhood Sports Park	O
Local Sports Park	N
Urban Landscaping	
Major Urban Landscaping	R
High Priority Urban Landscaping	O
Medium Priority Urban Landscaping	N
Low Priority Urban Landscaping	N

Recreation Park	
Regional Recreation Park	R
District Recreation Park	O
Neighbourhood Recreation Park	N
Local Recreation Park	N
Natural Area	
Major Conservation Natural Area	O
High Priority Natural Area	N
Medium Priority Natural Area	N
Low Priority Natural Area	N

## Closed-circuit television (CCTV)

Closed-circuit television assists the City in identifying issues that may negatively affect usage or amenity of public open spaces. Closed-circuit television is supported in public open spaces that have experienced ongoing anti-social and/or criminal behaviour, or where credible potential for such behaviour exists.

### Co-located infrastructure (required):

Nil

### Complementary infrastructure:

- Car parking
- Community facility (large)
- Community facility (small)
- Lighting (security and amenity)
- Skate/BMX facility (dedicated)
- Skate/BMX facility (incidental)
- Sports facility (large)
- Sports facility (small)



Example: Delamere Park, Currumbine



Example: Reid Promenade, Joondalup

### Infrastructure by classification (R = Recommended; O = Optional; N = Not supported):

Sports Park	
Regional Sports Park	O
District Sports Park	O
Neighbourhood Sports Park	O
Local Sports Park	O
Urban Landscaping	
Major Urban Landscaping	O
High Priority Urban Landscaping	O
Medium Priority Urban Landscaping	O
Low Priority Urban Landscaping	O

Recreation Park	
Regional Recreation Park	O
District Recreation Park	O
Neighbourhood Recreation Park	O
Local Recreation Park	O
Natural Area	
Major Conservation Natural Area	O
High Priority Natural Area	O
Medium Priority Natural Area	O
Low Priority Natural Area	O



## Community facility (large)

Large community facilities support multiple community groups to undertake activities, conduct meetings, hold large group functions and store equipment. Large community facilities are supported in public open spaces if suitable, nearby facilities are at full-capacity. The design of a large community facility should provide for multiple meeting spaces which can be used for various activities, and may include a publicly-accessible external toilet. The City's Property Management Framework and the Venue Hire Fees and Charges Policy guides the leasing and hiring of large community facilities.

### Co-located infrastructure (required):

- Car parking
- Lighting (security and amenity)
- Path network
- Waste bin

### Complementary infrastructure:

- Barbeque
- Closed-circuit television (CCTV)
- Drinking fountain
- Play space (regional)
- Play space (district)
- Public art
- Skate/BMX facility (dedicated)



Example: Delamere Park, Currumbine



Example: Heathridge Park, Heathridge

### Infrastructure by classification (R = Recommended; O = Optional; N = Not supported):

Sports Park	
Regional Sports Park	N
District Sports Park	N
Neighbourhood Sports Park	N
Local Sports Park	N
Urban Landscaping	
Major Urban Landscaping	N
High Priority Urban Landscaping	N
Medium Priority Urban Landscaping	N
Low Priority Urban Landscaping	N

Recreation Park	
Regional Recreation Park	R*
District Recreation Park	O
Neighbourhood Recreation Park	N
Local Recreation Park	N
Natural Area	
Major Conservation Natural Area	N
High Priority Natural Area	N
Medium Priority Natural Area	N
Low Priority Natural Area	N

\*At least one of (alternatives: toilet/changeroom facility; toilet facility (free-standing)).

## Community facility (small)

Small community facilities support community groups to undertake activities, conduct meetings, hold minor functions and store equipment. Small community facilities are supported in public open spaces if suitable, nearby facilities are at full-capacity. The design of a small community facility should provide for a single meeting space which can be used for various activities, and may include a publicly-accessible external toilet. The City's Property Management Framework and the Venue Hire Fees and Charges Policy guides the leasing and hiring of large community facilities.

### Co-located infrastructure (required):

- Car parking
- Lighting (security and amenity)
- Path network
- Waste bin

### Complementary infrastructure:

- Barbeque
- Closed-circuit television (CCTV)
- Drinking fountain
- Play space (district)
- Play space (neighbourhood)
- Public art
- Skate/BMX facility (dedicated)



Example: Dampier Park, Kallaroo



Example: Gibson Park, Padbury

### Infrastructure by classification (R = Recommended; O = Optional; N = Not supported):

Sports Park	
Regional Sports Park	N
District Sports Park	N
Neighbourhood Sports Park	N
Local Sports Park	N
Urban Landscaping	
Major Urban Landscaping	N
High Priority Urban Landscaping	N
Medium Priority Urban Landscaping	N
Low Priority Urban Landscaping	N

Recreation Park	
Regional Recreation Park	N
District Recreation Park	O
Neighbourhood Recreation Park	O
Local Recreation Park	N
Natural Area	
Major Conservation Natural Area	N
High Priority Natural Area	N
Medium Priority Natural Area	N
Low Priority Natural Area	N

## Dog exercise area (fenced)

Fenced dog exercise areas provide the opportunity for dogs to be exercised off-leash in an enclosed space. The installation of a dog exercise area is supported in public open spaces with large, under-utilised space that can accommodate an appropriate buffer offset to residential homes. Public open spaces where dogs are prohibited will not be considered, nor will public open spaces with steep slopes or minimal shade. Incompatible co-located uses include schools and conservation areas. An equal distribution of dog exercise areas across the City is preferred, with proximity to other dog facilities, including dog beaches, informing consideration.

### Co-located infrastructure (required):

- Car parking
- Dog facilities
- Drinking fountain
- Irrigation

### Complementary infrastructure:

Nil



Example: Elcar Park, Joondalup

### Infrastructure by classification (R = Recommended; O = Optional; N = Not supported):

Sports Park	
Regional Sports Park	O
District Sports Park	O
Neighbourhood Sports Park	N
Local Sports Park	N
Urban Landscaping	
Major Urban Landscaping	N
High Priority Urban Landscaping	N
Medium Priority Urban Landscaping	N
Low Priority Urban Landscaping	N

Recreation Park	
Regional Recreation Park	O
District Recreation Park	O
Neighbourhood Recreation Park	N
Local Recreation Park	N
Natural Area	
Major Conservation Natural Area	N
High Priority Natural Area	N
Medium Priority Natural Area	N
Low Priority Natural Area	N

## Dog facilities

Dog facilities include dog waste bags, dog agility equipment and other equipment specifically designed for use by dogs and their owners. Dog facilities are supported in public open spaces where dogs are permitted and where dog walking and dog exercise is likely to occur.

### Co-located infrastructure (required):

Nil

### Complementary infrastructure:

- Dog exercise area (fenced)
- Drinking fountain
- Waste bin



Example: Hillarys Foreshore Reserve, Hillarys



Example: Elcar Park, Joondalup

### Infrastructure by classification (R = Recommended; O = Optional; N = Not supported):

Sports Park	
Regional Sports Park	O
District Sports Park	O
Neighbourhood Sports Park	O
Local Sports Park	O
Urban Landscaping	
Major Urban Landscaping	N
High Priority Urban Landscaping	N
Medium Priority Urban Landscaping	N
Low Priority Urban Landscaping	N

Recreation Park	
Regional Recreation Park	O
District Recreation Park	O
Neighbourhood Recreation Park	O
Local Recreation Park	O
Natural Area	
Major Conservation Natural Area	O
High Priority Natural Area	N
Medium Priority Natural Area	N
Low Priority Natural Area	N



## Drinking fountain

Drinking fountains provide access to free, potable water for community members using public open spaces. Drinking fountains are supported where significant utilisation levels are experienced, and where water infrastructure can be supported. Designs incorporating dog fountains will only be considered in public open spaces where dogs are permitted.

### Co-located infrastructure (required):

Nil

### Complementary infrastructure:

- Basketball pad
- Community facility (large)
- Community facility (small)
- Dog exercise area (fenced)
- Dog facilities
- Fitness equipment
- Outdoor shower
- Play space (regional)
- Play space (district)
- Play space (neighbourhood)
- Play space (local)
- Recreation infrastructure
- Skate/BMX facility (dedicated)
- Skate/BMX facility (incidental)
- Sports facility (large)
- Sports facility (small)
- Sports infrastructure (permanent)
- Sports infrastructure (temporary)
- Toilet/changeroom facility
- Toilet facility (free-standing)



Example: Otago Park, Greenwood



Example: Korella Park, Mullaloo



**Infrastructure by classification (R = Recommended; O = Optional; N = Not supported):**

<b>Sports Park</b>	
Regional Sports Park	R
District Sports Park	R
Neighbourhood Sports Park	O
Local Sports Park	O
<b>Urban Landscaping</b>	
Major Urban Landscaping	N
High Priority Urban Landscaping	N
Medium Priority Urban Landscaping	N
Low Priority Urban Landscaping	N

<b>Recreation Park</b>	
Regional Recreation Park	R
District Recreation Park	R
Neighbourhood Recreation Park	O
Local Recreation Park	N
<b>Natural Area</b>	
Major Conservation Natural Area	O
High Priority Natural Area	N
Medium Priority Natural Area	N
Low Priority Natural Area	N

## Entry statement

Entry statements are visual indicators which act to welcome residents and visitors to an area. Entry statements are supported in public open spaces along major thoroughfares which form significant entry points into and out of the City and significant places of interest.

### Co-located infrastructure (required):

- Irrigation



Example: Joondalup Drive, Joondalup

### Complementary infrastructure:

- Public art



Example: Ocean Reef Road/Joondalup Drive, Edgewater

### Infrastructure by classification (R = Recommended; O = Optional; N = Not supported):

Sports Park	
Regional Sports Park	N
District Sports Park	N
Neighbourhood Sports Park	N
Local Sports Park	N
Urban Landscaping	
Major Urban Landscaping	O
High Priority Urban Landscaping	O
Medium Priority Urban Landscaping	N
Low Priority Urban Landscaping	N

Recreation Park	
Regional Recreation Park	N
District Recreation Park	N
Neighbourhood Recreation Park	N
Local Recreation Park	N
Natural Area	
Major Conservation Natural Area	N
High Priority Natural Area	N
Medium Priority Natural Area	N
Low Priority Natural Area	N

## Fencing (conservation)

Conservation fencing prevents unauthorised access to conservation areas and assists in protecting biodiversity values and preventing the spread of pathogens. Conservation fencing is supported in public open spaces where the need for protection has been identified, this includes bushland, wetlands and coastal dunes. Conservation fencing should be designed to allow for the free movement of small fauna whilst limiting human access through appropriate access points.

### Co-located infrastructure (required):

Nil

### Complementary infrastructure:

Nil



Example: Huxley Park, Burns Beach



Example: Lakeside Park, Joondalup

### Infrastructure by classification (R = Recommended; O = Optional; N = Not supported):

Sports Park	
Regional Sports Park	N
District Sports Park	N
Neighbourhood Sports Park	N
Local Sports Park	N
Urban Landscaping	
Major Urban Landscaping	N
High Priority Urban Landscaping	N
Medium Priority Urban Landscaping	N
Low Priority Urban Landscaping	N

Recreation Park	
Regional Recreation Park	N
District Recreation Park	N
Neighbourhood Recreation Park	N
Local Recreation Park	N
Natural Area	
Major Conservation Natural Area	R
High Priority Natural Area	R
Medium Priority Natural Area	O
Low Priority Natural Area	O

## Fencing (park)

Park fencing prevents inappropriate vehicular access and parking in public open spaces. Park fencing is supported around all Sports Parks and Recreation Parks, particularly those experiencing high levels of usage.

### Co-located infrastructure (required):

Nil



Example: Moolanda Park, Kingsley

### Complementary infrastructure:

Nil



Example: Finney Park, Marmion

### Infrastructure by classification (R = Recommended; O = Optional; N = Not supported):

Sports Park	
Regional Sports Park	R
District Sports Park	R
Neighbourhood Sports Park	R
Local Sports Park	R
Urban Landscaping	
Major Urban Landscaping	N
High Priority Urban Landscaping	N
Medium Priority Urban Landscaping	N
Low Priority Urban Landscaping	N

Recreation Park	
Regional Recreation Park	R
District Recreation Park	R
Neighbourhood Recreation Park	R
Local Recreation Park	R
Natural Area	
Major Conservation Natural Area	O
High Priority Natural Area	O
Medium Priority Natural Area	O
Low Priority Natural Area	O



## Fencing (special)

Special fencing is used in public open spaces when non-standard fencing is required either for safety, conservation or aesthetic purposes. The installation of special fencing is supported on a case-by-case basis with the design varying according to purpose.

### Co-located infrastructure (required):

Nil



Example: Craigie Open Space, Craigie

### Complementary infrastructure:

Nil



Example: Pinnaroo Point Beach Park, Hillarys

### Infrastructure by classification (R = Recommended; O = Optional; N = Not supported):

Sports Park	
Regional Sports Park	O
District Sports Park	O
Neighbourhood Sports Park	O
Local Sports Park	O
Urban Landscaping	
Major Urban Landscaping	O
High Priority Urban Landscaping	O
Medium Priority Urban Landscaping	O
Low Priority Urban Landscaping	O

Recreation Park	
Regional Recreation Park	O
District Recreation Park	O
Neighbourhood Recreation Park	O
Local Recreation Park	O
Natural Area	
Major Conservation Natural Area	O
High Priority Natural Area	O
Medium Priority Natural Area	O
Low Priority Natural Area	O

## Fitness equipment

Fitness equipment provides community members with access to free, outdoor fitness opportunities in public open spaces. Fitness equipment is supported in public open spaces that are designed to have a specific focus on fitness and individual sport, or are known to be popular locations for fitness training. Due to high maintenance costs and potential safety issues, it is preferred that fitness equipment be designed as solid pieces, with few moving parts.

### Co-located infrastructure (required):

- Drinking fountain



Example: Hillarys Beach Park, Hillarys

### Complementary infrastructure:

Nil



Example: Falkland Park, Kinross

### Infrastructure by classification (R = Recommended; O = Optional; N = Not supported):

Sports Park	
Regional Sports Park	O
District Sports Park	O
Neighbourhood Sports Park	N
Local Sports Park	N
Urban Landscaping	
Major Urban Landscaping	N
High Priority Urban Landscaping	N
Medium Priority Urban Landscaping	N
Low Priority Urban Landscaping	N

Recreation Park	
Regional Recreation Park	O
District Recreation Park	O
Neighbourhood Recreation Park	N
Local Recreation Park	N
Natural Area	
Major Conservation Natural Area	N
High Priority Natural Area	N
Medium Priority Natural Area	N
Low Priority Natural Area	N

## Irrigation

Irrigation assists in providing enhanced landscaping and playing surfaces. The City is subject to groundwater extraction limitations by the Department of Water and therefore aims to capitalise on any opportunities to reduce water consumption wherever possible. The City also applies hydro-zoning and eco-zoning methods to further reduce reliance on irrigation. Irrigation is supported in public open spaces with turf playing fields, those that facilitate long-term usage, those with additional amenity requirements, and those that have been prioritised for enhanced landscaping.

### Co-located infrastructure (required):

Nil

### Complementary infrastructure:

- Dog exercise area (fenced)
- Entry statement
- Recreation infrastructure
- Sports infrastructure (permanent)
- Sports infrastructure (temporary)



Example: Heathridge Park, Heathridge



Example: Discovery Park, Iluka

### Infrastructure by classification (R = Recommended; O = Optional; N = Not supported):

Sports Park	
Regional Sports Park	R
District Sports Park	R
Neighbourhood Sports Park	R
Local Sports Park	R
Urban Landscaping	
Major Urban Landscaping	R
High Priority Urban Landscaping	O
Medium Priority Urban Landscaping	N
Low Priority Urban Landscaping	N

Recreation Park	
Regional Recreation Park	R
District Recreation Park	R
Neighbourhood Recreation Park	R
Local Recreation Park	O
Natural Area	
Major Conservation Natural Area	N
High Priority Natural Area	N
Medium Priority Natural Area	N
Low Priority Natural Area	N

## Lighting (security and amenity)

Security and amenity lighting assists in the safe passage of community members through public open spaces after dark and functions to deter anti-social and criminal behaviour. Security and amenity lighting is supported in public open spaces where street lighting is not sufficient to illuminate barbeques, buildings, play spaces, path networks or car parking. “Hot spot” security lighting is also supported where there is evidence of ongoing anti-social or criminal behaviour.

### Co-located infrastructure (required):

Nil

### Complementary infrastructure:

- Barbeque
- Basketball pad
- Car parking
- Closed-circuit television (CCTV)
- Community building (large)
- Community building (small)
- Path network
- Play space (district)
- Play space (local)
- Play space (neighbourhood)
- Play space (regional)
- Recreation infrastructure
- Skate/BMX facility (dedicated)
- Skate/BMX facility (incidental)
- Sports facility (large)
- Sports facility (small)
- Storage facility (free-standing)
- Toilet/changeroom facility
- Toilet facility (free-standing)



Example: Sir James McCusker Park, Iluka



Example: Bramston Park, Burns Beach



**Infrastructure by classification (R = Recommended; O = Optional; N = Not supported):**

<b>Sports Park</b>	
Regional Sports Park	R
District Sports Park	R
Neighbourhood Sports Park	O
Local Sports Park	O
<b>Urban Landscaping</b>	
Major Urban Landscaping	O
High Priority Urban Landscaping	O
Medium Priority Urban Landscaping	O
Low Priority Urban Landscaping	O

<b>Recreation Park</b>	
Regional Recreation Park	R
District Recreation Park	R
Neighbourhood Recreation Park	O
Local Recreation Park	O
<b>Natural Area</b>	
Major Conservation Natural Area	O
High Priority Natural Area	O
Medium Priority Natural Area	O
Low Priority Natural Area	O

## Lighting (sports floodlighting)

Sports floodlighting enables the safe undertaking of recreation and sports activities within public open spaces after dark. Sports floodlighting is supported in public open spaces where formal, organised sport and/or regular informal recreation is undertaken. The level of floodlighting provided should reflect the type of activity being undertaken, the boundaries of the playing space and the scheduled match or training requirements of users.

### Co-located infrastructure (required):

At least one of:

- Skate/BMX facility (dedicated)
- Sports infrastructure (permanent)
- Sports infrastructure (temporary)



Example: Emerald Park, Edgewater

### Complementary infrastructure:

- Sports facility (large)
- Sports facility (small)
- Toilet/changeroom facility
- Toilet facility (free-standing)



Example: Ellersdale Park, Warwick

### Infrastructure by classification (R = Recommended; O = Optional; N = Not supported):

Sports Park	
Regional Sports Park	R
District Sports Park	R
Neighbourhood Sports Park	R
Local Sports Park	O
Urban Landscaping	
Major Urban Landscaping	N
High Priority Urban Landscaping	N
Medium Priority Urban Landscaping	N
Low Priority Urban Landscaping	N

Recreation Park	
Regional Recreation Park	O
District Recreation Park	O
Neighbourhood Recreation Park	N
Local Recreation Park	N
Natural Area	
Major Conservation Natural Area	N
High Priority Natural Area	N
Medium Priority Natural Area	N
Low Priority Natural Area	N

## Lookout/viewing platform

Lookouts and viewing platforms enable accessible viewing of special locations, usually natural landscapes. Lookouts and viewing platforms are supported in public open spaces that contain a natural place of interest (such as a lake or beach).

### Co-located infrastructure (required):

- Path network



Example: Burns Beach Foreshore Reserve, Burns Beach

### Complementary infrastructure:

- Bench seating
- Picnic structure
- Signage (interpretive)



Example: Neil Hawkins Park, Joondalup

### Infrastructure by classification (R = Recommended; O = Optional; N = Not supported):

Sports Park	
Regional Sports Park	N
District Sports Park	N
Neighbourhood Sports Park	N
Local Sports Park	N
Urban Landscaping	
Major Urban Landscaping	N
High Priority Urban Landscaping	N
Medium Priority Urban Landscaping	N
Low Priority Urban Landscaping	N

Recreation Park	
Regional Recreation Park	O
District Recreation Park	O
Neighbourhood Recreation Park	O
Local Recreation Park	N
Natural Area	
Major Conservation Natural Area	O
High Priority Natural Area	O
Medium Priority Natural Area	N
Low Priority Natural Area	N

## Monument/memorial (permanent)

Permanent monuments and memorials provide community members with a public means of recognising and honouring the past contributions of deceased persons within their local communities. Permanent monuments and memorials in public open spaces is considered on a case-by-case basis. The City's Memorials in Public Reserves Policy provides guidance to community members seeking to have a permanent memorial installed.

### Co-located infrastructure (required):

Nil

### Complementary infrastructure:

- Bench seating
- Public art
- Signage (interpretive)



Example: Kingsley Park, Joondalup



Example: Parin Park, Greenwood

### Infrastructure by classification (R = Recommended; O = Optional; N = Not supported):

Sports Park	
Regional Sports Park	O
District Sports Park	O
Neighbourhood Sports Park	O
Local Sports Park	O
Urban Landscaping	
Major Urban Landscaping	N
High Priority Urban Landscaping	N
Medium Priority Urban Landscaping	N
Low Priority Urban Landscaping	N

Recreation Park	
Regional Recreation Park	O
District Recreation Park	O
Neighbourhood Recreation Park	O
Local Recreation Park	O
Natural Area	
Major Conservation Natural Area	O
High Priority Natural Area	O
Medium Priority Natural Area	N
Low Priority Natural Area	N



## Outdoor shower

Outdoor showers enable community members to rinse themselves of sand after visiting the beach. Outdoor showers are supported in public open spaces that contain or are adjacent to well-utilised beaches and where water infrastructure can be supported.

### Co-located infrastructure (required):

Nil

### Complementary infrastructure:

- Drinking fountain
- Sports facility (large)
- Sports facility (small)
- Toilet/changeroom facility
- Toilet facility (free-standing)



Example: Sorrento Beach Park, Sorrento



Example: Iluka Foreshore Reserve, Iluka

### Infrastructure by classification (R = Recommended; O = Optional; N = Not supported):

Sports Park	
Regional Sports Park	N
District Sports Park	N
Neighbourhood Sports Park	N
Local Sports Park	N
Urban Landscaping	
Major Urban Landscaping	N
High Priority Urban Landscaping	N
Medium Priority Urban Landscaping	N
Low Priority Urban Landscaping	N

Recreation Park	
Regional Recreation Park	O
District Recreation Park	O
Neighbourhood Recreation Park	O
Local Recreation Park	N
Natural Area	
Major Conservation Natural Area	O
High Priority Natural Area	N
Medium Priority Natural Area	N
Low Priority Natural Area	N

## Path network

Path networks provide community members with safe and accessible routes through and around public open spaces. A path network can connect various features within public open spaces, as well as connect public open spaces with other nearby areas. Path networks are supported in public open spaces where infrastructure exists that would benefit from greater access and connectivity (such as a building, play space, lookout/viewing platform, etc), and where a broader pedestrian/cycle network exists.

### Co-located infrastructure (required):

Nil

### Complementary infrastructure:

- Barbeque
- Bench seating
- Community facility (large)
- Community facility (small)
- Lighting (security and amenity)
- Lookout/viewing platform
- Signage (interpretive)
- Signage (wayfinding)
- Skate/BMX facility (dedicated)
- Skate/BMX facility (incidental)
- Sports facility (large)
- Sports facility (small)
- Toilet/changeroom facility
- Toilet facility (free-standing)



Example: Macaulay Park, Duncraig



Example: Wandina Park, Duncraig

### Infrastructure by classification (R = Recommended; O = Optional; N = Not supported):

Sports Park	
Regional Sports Park	R
District Sports Park	R
Neighbourhood Sports Park	R
Local Sports Park	O
Urban Landscaping	
Major Urban Landscaping	O
High Priority Urban Landscaping	O
Medium Priority Urban Landscaping	O
Low Priority Urban Landscaping	O

Recreation Park	
Regional Recreation Park	R
District Recreation Park	R
Neighbourhood Recreation Park	O
Local Recreation Park	O
Natural Area	
Major Conservation Natural Area	R
High Priority Natural Area	O
Medium Priority Natural Area	O
Low Priority Natural Area	O

## Picnic structure

Picnic structures enable community members to sit and eat comfortably and safely within public open spaces. Picnic structures are supported in public open spaces that contain natural features likely to attract visitors for the purposes of picnicking, or are known to be popular picnicking locations. Where feasible, universally accessible design should be considered.

### Co-located infrastructure (required):

- Waste bin

At least one of:

- Barbeque
- Play space (regional)
- Play space (district)
- Play space (neighbourhood)

### Complementary infrastructure:

- Car parking
- Lookout/viewing platform
- Recreation infrastructure
- Toilet/changeroom facility
- Toilet facility (free-standing)



Example: Maquire Park, Hillarys



Example: Picnic Cove Park, Edgewater

### Infrastructure by classification (R = Recommended; O = Optional; N = Not supported):

Sports Park	
Regional Sports Park	O
District Sports Park	O
Neighbourhood Sports Park	O
Local Sports Park	N
Urban Landscaping	
Major Urban Landscaping	N
High Priority Urban Landscaping	N
Medium Priority Urban Landscaping	N
Low Priority Urban Landscaping	N

Recreation Park	
Regional Recreation Park	R
District Recreation Park	R
Neighbourhood Recreation Park	O
Local Recreation Park	N
Natural Area	
Major Conservation Natural Area	O
High Priority Natural Area	N
Medium Priority Natural Area	N
Low Priority Natural Area	N



## Play space (regional)

Regional play spaces are large play spaces which include large play items, a large nature/sensory play area, multiple combination structures, multiple swing elements, and a track circuit. Regional play spaces are supported in regional sized public open spaces that attract users from the whole of the City and surrounding local governments. Regional play spaces should incorporate universal/all abilities play equipment.

### Co-located infrastructure (required):

- Barbeque
- Bench seating
- Drinking fountain
- Picnic structure
- Lighting (security and amenity)
- Waste bin

At least one of:

- Community facility (large)
- Sports facility (large)
- Toilet/changeroom facility
- Toilet facility (free-standing)

### Complementary infrastructure:

- Artificial shade
- Basketball pad
- Public art
- Recreation infrastructure
- Skate facility (incidental)



Example: Tom Simpson Park, Mullaloo



Example: Hillarys Beach Park, Hillarys

### Infrastructure by classification (R = Recommended; O = Optional; N = Not supported):

Sports Park	
Regional Sports Park	O
District Sports Park	N
Neighbourhood Sports Park	N
Local Sports Park	N
Urban Landscaping	
Major Urban Landscaping	N
High Priority Urban Landscaping	N
Medium Priority Urban Landscaping	N
Low Priority Urban Landscaping	N

Recreation Park	
Regional Recreation Park	R
District Recreation Park	N
Neighbourhood Recreation Park	N
Local Recreation Park	N
Natural Area	
Major Conservation Natural Area	N
High Priority Natural Area	N
Medium Priority Natural Area	N
Low Priority Natural Area	N



## Play space (district)

District play spaces are large play spaces which include medium to large play items, a medium to large nature/sensory play area, at least one large combination structure, multiple swing elements, and a track circuit. District play spaces are supported in public open spaces that attract users from the whole of the City, especially surrounding suburbs. Where possible, district play spaces should incorporate universal/all abilities play equipment.

### Co-located infrastructure (required):

- Barbeque
- Bench seating
- Drinking fountain
- Lighting (security and amenity)
- Waste bin

### Complementary infrastructure:

- Artificial shade
- Basketball pad
- Community facility (large)
- Community facility (small)
- Picnic structure
- Public art
- Recreation infrastructure
- Skate facility (incidental)
- Sports facility (large)
- Toilet/changeroom facility
- Toilet facility (free-standing)



Example: Broadbeach Park, Hillarys



Example: Braden Park, Marmion

### Infrastructure by classification (R = Recommended; O = Optional; N = Not supported):

Sports Park	
Regional Sports Park	N
District Sports Park	O
Neighbourhood Sports Park	N
Local Sports Park	N
Urban Landscaping	
Major Urban Landscaping	N
High Priority Urban Landscaping	N
Medium Priority Urban Landscaping	N
Low Priority Urban Landscaping	N

Recreation Park	
Regional Recreation Park	N
District Recreation Park	R
Neighbourhood Recreation Park	N
Local Recreation Park	N
Natural Area	
Major Conservation Natural Area	N
High Priority Natural Area	N
Medium Priority Natural Area	N
Low Priority Natural Area	N

## Play space (neighbourhood)

Neighbourhood play spaces are medium sized play spaces which include small to medium play items, a small to medium nature/sensory play area, a medium combination structure, and at least one swing element. Neighbourhood play spaces are supported in public open spaces that attract users from the surrounding suburb.

### Co-located infrastructure (required):

- Bench seating
- Waste bin

### Complementary infrastructure:

- Artificial shade
- Barbeque
- Basketball pad
- Community facility (small)
- Drinking fountain
- Lighting (security and amenity)
- Picnic structure
- Recreation infrastructure
- Skate facility (incidental)
- Sports facility (small)
- Toilet/changeroom facility
- Toilet facility (free-standing)



Example: Gradient Park, Beldon



Example: Montague Park, Kallaroo

### Infrastructure by classification (R = Recommended; O = Optional; N = Not supported):

Sports Park	
Regional Sports Park	N
District Sports Park	N
Neighbourhood Sports Park	O
Local Sports Park	N
Urban Landscaping	
Major Urban Landscaping	N
High Priority Urban Landscaping	N
Medium Priority Urban Landscaping	N
Low Priority Urban Landscaping	N

Recreation Park	
Regional Recreation Park	N
District Recreation Park	N
Neighbourhood Recreation Park	O
Local Recreation Park	N
Natural Area	
Major Conservation Natural Area	N
High Priority Natural Area	N
Medium Priority Natural Area	N
Low Priority Natural Area	N

## Play space (local)

Local play spaces are small play spaces which include small play items, a small nature/sensory play area, nil or one small combination structure, and nil or one swing element. Local play spaces are supported in public open spaces where there is not another nearby play space within 400 metres.

### Co-located infrastructure (required):

- Bench seating
- Waste bin



Example: Trig Point Park, Ocean Reef

### Complementary infrastructure:

- Lighting (security and amenity)
- Recreation infrastructure



Example: Herreshoff Park, Heathridge

### Infrastructure by classification (R = Recommended; O = Optional; N = Not supported):

Sports Park	
Regional Sports Park	N
District Sports Park	N
Neighbourhood Sports Park	N
Local Sports Park	O
Urban Landscaping	
Major Urban Landscaping	N
High Priority Urban Landscaping	N
Medium Priority Urban Landscaping	N
Low Priority Urban Landscaping	N

Recreation Park	
Regional Recreation Park	N
District Recreation Park	N
Neighbourhood Recreation Park	N
Local Recreation Park	O
Natural Area	
Major Conservation Natural Area	N
High Priority Natural Area	N
Medium Priority Natural Area	N
Low Priority Natural Area	N



## Public art

Public art enhances community spaces, creates a sense of place, promotes the expression of local identity, and reflects on the shared values of the community. The installation of public art is considered on a case-by-case basis and may include traditional media, functional objects, multimedia installations or interactive works. The City's Public Art Policy guides the delivery of public art projects in the City, including the State Government's Percent for Art Scheme which impacts building refurbishments in public open spaces.

### Co-located infrastructure (required):

Nil

### Complementary infrastructure:

- Community facility (large)
- Community facility (small)
- Entry statement
- Monument/memorial (permanent)
- Play space (regional)
- Play space (district)
- Recreation infrastructure
- Signage (interpretive)
- Sports facility (large)
- Sports facility (small)
- Storage facility (free-standing)
- Toilet/changeroom facility
- Toilet facility (free-standing)



Example: Nanika Park, Joondalup



Example: Bengello Park, Burns Beach

### Infrastructure by classification (R = Recommended; O = Optional; N = Not supported):

Sports Park	
Regional Sports Park	O
District Sports Park	O
Neighbourhood Sports Park	O
Local Sports Park	N
Urban Landscaping	
Major Urban Landscaping	O
High Priority Urban Landscaping	O
Medium Priority Urban Landscaping	N
Low Priority Urban Landscaping	N

Recreation Park	
Regional Recreation Park	O
District Recreation Park	O
Neighbourhood Recreation Park	O
Local Recreation Park	N
Natural Area	
Major Conservation Natural Area	O
High Priority Natural Area	N
Medium Priority Natural Area	N
Low Priority Natural Area	N



## Recreation infrastructure

Recreation infrastructure enables informal recreation activities to be undertaken in public open spaces. This infrastructure can include a wide variety of types suited to the size, usage and demographics of the area (such as a bike rack, bike skills track, ping pong table or fish cleaning station, amongst others). Recreation infrastructure is supported in public open spaces where there is sufficient space and public support for its installation. The type of recreation infrastructure selected should be based on the location and existing (or potential) usage of the public open space, as well as the availability of complementary infrastructure.

### Co-located infrastructure (required):

Nil

### Complementary infrastructure:

- Basketball pad
- Bench seating
- Car parking
- Drinking fountain
- Irrigation
- Lighting (security and amenity)
- Path network
- Picnic structure
- Play space (regional)
- Play space (district)
- Play space (neighbourhood)
- Play space (local)
- Public art
- Skate/BMX facility (dedicated)
- Skate/BMX facility (incidental)
- Sports facility (large)
- Sports facility (small)
- Toilet/changeroom facility
- Toilet facility (free-standing)
- Waste bin



Example: Chichester Park, Woodvale



Example: Gibson Park, Padbury

**Infrastructure by classification (R = Recommended; O = Optional; N = Not supported):**

<b>Sports Park</b>	
Regional Sports Park	O
District Sports Park	O
Neighbourhood Sports Park	O
Local Sports Park	O
<b>Urban Landscaping</b>	
Major Urban Landscaping	N
High Priority Urban Landscaping	N
Medium Priority Urban Landscaping	N
Low Priority Urban Landscaping	N

<b>Recreation Park</b>	
Regional Recreation Park	O
District Recreation Park	O
Neighbourhood Recreation Park	O
Local Recreation Park	O
<b>Natural Area</b>	
Major Conservation Natural Area	O
High Priority Natural Area	N
Medium Priority Natural Area	N
Low Priority Natural Area	N

## Signage (interpretive)

Interpretive signage acts to educate and inform community members about the historical, cultural and environmental values of a public open space. Interpretive signage is supported in public open spaces that contain these values and are likely (or have the potential) to attract a significant number of visitors.

### Co-located infrastructure (required):

Nil



Example: Burns Beach Foreshore Reserve, Burns Beach

### Complementary infrastructure:

- Lookout/viewing platform
- Monument/memorial (permanent)
- Path network
- Public art



Example: Shepherds Bush Park Natural Area

### Infrastructure by classification (R = Recommended; O = Optional; N = Not supported):

Sports Park	
Regional Sports Park	O
District Sports Park	O
Neighbourhood Sports Park	N
Local Sports Park	N
Urban Landscaping	
Major Urban Landscaping	N
High Priority Urban Landscaping	N
Medium Priority Urban Landscaping	N
Low Priority Urban Landscaping	N

Recreation Park	
Regional Recreation Park	O
District Recreation Park	O
Neighbourhood Recreation Park	N
Local Recreation Park	N
Natural Area	
Major Conservation Natural Area	R
High Priority Natural Area	O
Medium Priority Natural Area	O
Low Priority Natural Area	O

## Signage (park name)

Park name signage identifies public open spaces in a consistent manner and enhances the City's brand by enabling easy recognition. Park name signage is supported in all public open spaces, except Urban Landscaping. This infrastructure should be installed at car park entrances or where the boundaries face major road intersections.

### Co-located infrastructure (required):

Nil

### Complementary infrastructure:

Nil



Example: St Michael's Park, Connolly



Example: Haddington Park, Beldon

### Infrastructure by classification (R = Recommended; O = Optional; N = Not supported):

Sports Park	
Regional Sports Park	R
District Sports Park	R
Neighbourhood Sports Park	R
Local Sports Park	R
Urban Landscaping	
Major Urban Landscaping	N
High Priority Urban Landscaping	N
Medium Priority Urban Landscaping	N
Low Priority Urban Landscaping	N

Recreation Park	
Regional Recreation Park	R
District Recreation Park	R
Neighbourhood Recreation Park	R
Local Recreation Park	R
Natural Area	
Major Conservation Natural Area	R
High Priority Natural Area	R
Medium Priority Natural Area	R
Low Priority Natural Area	R



## Signage (wayfinding)

Wayfinding signage provides directional information to community members to assist in their movement through public open spaces. Wayfinding signage is supported in public open spaces where it is determined that directions from point to point, or progress along a route, would be valuable to visitors. This could include public open spaces that contain interesting features, long or complicated routes, connections to broader pedestrian/cycle networks, and/or contain a route or part of a route to a popular destination.

### Co-located infrastructure (required):

Nil



Example: Warwick Open Space Bushland, Warwick

### Complementary infrastructure:

- Path network



Example: Boas Avenue, Joondalup

### Infrastructure by classification (R = Recommended; O = Optional; N = Not supported):

Sports Park	
Regional Sports Park	O
District Sports Park	O
Neighbourhood Sports Park	O
Local Sports Park	N
Urban Landscaping	
Major Urban Landscaping	O
High Priority Urban Landscaping	O
Medium Priority Urban Landscaping	N
Low Priority Urban Landscaping	N

Recreation Park	
Regional Recreation Park	O
District Recreation Park	O
Neighbourhood Recreation Park	O
Local Recreation Park	N
Natural Area	
Major Conservation Natural Area	O
High Priority Natural Area	O
Medium Priority Natural Area	O
Low Priority Natural Area	N

## Skate/BMX facility (dedicated)

Dedicated skate/BMX facilities enable informal wheeled sports activities in public open spaces. This infrastructure is specifically designed for use with skateboards, scooters and BMX bikes. Dedicated skate/BMX facilities are supported in public open spaces that accommodate an appropriate buffer offset to residential homes, good natural and passive surveillance, access to public transport, access to emergency services, and where there is public support for installation. An equal distribution of skate/BMX facilities is preferred, with proximity to other similar facilities to also inform consideration. The City's Outdoor Youth Recreation Strategy guides the future provision of skate/BMX facilities in the City.

### Co-located infrastructure (required):

- Bench seating
- Car parking
- Closed-circuit television (CCTV)
- Drinking fountain
- Path network
- Waste bin

At least one of:

- Community facility (large)
- Community facility (small)
- Sports facility (large)
- Sports facility (small)
- Toilet/changeroom facility
- Toilet facility (free-standing)

### Complementary infrastructure:

- Artificial shade
- Basketball pad
- Lighting (security and amenity)
- Lighting (sports floodlighting)
- Play space (regional)
- Play space (district)
- Recreation infrastructure
- Skate/BMX facility (incidental)



Example: Mirror Park, Ocean Reef



Example: MacNaughton Park, Kinross

### Infrastructure by classification (R = Recommended; O = Optional; N = Not supported):

Sports Park	
Regional Sports Park	O
District Sports Park	O
Neighbourhood Sports Park	N
Local Sports Park	N
Urban Landscaping	
Major Urban Landscaping	N
High Priority Urban Landscaping	N
Medium Priority Urban Landscaping	N
Low Priority Urban Landscaping	N

Recreation Park	
Regional Recreation Park	O
District Recreation Park	O
Neighbourhood Recreation Park	N
Local Recreation Park	N
Natural Area	
Major Conservation Natural Area	N
High Priority Natural Area	N
Medium Priority Natural Area	N
Low Priority Natural Area	N

## Skate/BMX facility (incidental)

Incidental skate/BMX facilities are smaller scale facilities integrated with other sport or recreation infrastructure for use with skateboards, scooters and BMX bikes. This infrastructure can include a wide variety of types suited to the size, usage and demographics of the area (such as a rail, bank or quarter pipe, amongst others). Incidental skate/BMX facilities are supported in public open spaces where there is sufficient space and public support for their installation. An equal distribution of skate/BMX facilities is preferred, with proximity to other similar facilities to also inform consideration. The City's Outdoor Youth Recreation Strategy guides the future provision of skate/BMX facilities in the City.

### Co-located infrastructure (required):

- Path network

### Complementary infrastructure:

- Basketball pad
- Bench seating
- Closed-circuit television (CCTV)
- Drinking fountain
- Lighting (security and amenity)
- Play space (district)
- Play space (neighbourhood)
- Play space (regional)
- Recreation infrastructure
- Skate/BMX facility (dedicated)
- Sports infrastructure (permanent)
- Waste bin



Example: Triton Park, Mullaloo



Example: Galston Park, Duncraig

### Infrastructure by classification (R = Recommended; O = Optional; N = Not supported):

Sports Park	
Regional Sports Park	O
District Sports Park	O
Neighbourhood Sports Park	O
Local Sports Park	O
Urban Landscaping	
Major Urban Landscaping	O
High Priority Urban Landscaping	O
Medium Priority Urban Landscaping	O
Low Priority Urban Landscaping	O

Recreation Park	
Regional Recreation Park	O
District Recreation Park	O
Neighbourhood Recreation Park	O
Local Recreation Park	O
Natural Area	
Major Conservation Natural Area	O
High Priority Natural Area	O
Medium Priority Natural Area	O
Low Priority Natural Area	N



## Sports facility (large)

Large sports facilities support multiple clubs to simultaneously undertake sports activities, conduct meetings, hold events and store equipment. Large sports facilities are supported in public open spaces which act as home grounds for large established clubs with multiple associated playing fields. The design of a large sports facility should enable multi-purpose uses (such as hire by the general community for private events), provide adequate changerooms for the undertaking of multiple sports activities, and may include a publicly-accessible external toilet. The City's Property Management Framework and the Venue Hire Fees and Charges Policy guides the leasing and hiring of large community facilities.

### Co-located infrastructure (required):

- Car parking
- Lighting (security and amenity)
- Lighting (sports floodlighting)
- Path network
- Waste bin

### Complementary infrastructure:

- Barbeque
- Closed-circuit television (CCTV)
- Drinking fountain
- Outdoor shower
- Play space (regional)
- Play space (district)
- Public art
- Skate/BMX facility (dedicated)
- Sports infrastructure (permanent)
- Sports infrastructure (temporary)



Example: Iluka District Open Space, Iluka



Example: Warwick Open Space, Warwick

### Infrastructure by classification (R = Recommended; O = Optional; N = Not supported):

Sports Park		Recreation Park	
Regional Sports Park	R	Regional Recreation Park	N
District Sports Park	R*	District Recreation Park	N
Neighbourhood Sports Park	N	Neighbourhood Recreation Park	N
Local Sports Park	N	Local Recreation Park	N
Urban Landscaping		Natural Area	
Major Urban Landscaping	N	Major Conservation Natural Area	N
High Priority Urban Landscaping	N	High Priority Natural Area	N
Medium Priority Urban Landscaping	N	Medium Priority Natural Area	N
Low Priority Urban Landscaping	N	Low Priority Natural Area	N

\*At least one of (alternatives: sports facility (small); toilet/changeroom facility).



## Sports facility (small)

Small sports facilities support clubs to undertake sports activities, conduct meetings, hold events and store equipment. Small sports facilities are supported in public open spaces which act as home or secondary grounds for one or more established clubs. The design of a small sports facility should enable multi-purpose uses (such as hire by the general community for private events), provide adequate changerooms, and may include a publicly-accessible external toilet. The City's Property Management Framework and the Venue Hire Fees and Charges Policy guides the leasing and hiring of large community facilities.

### Co-located infrastructure (required):

- Car parking
- Lighting (security and amenity)
- Lighting (sports floodlighting)
- Path network
- Waste bin

### Complementary infrastructure:

- Barbeque
- Closed-circuit television (CCTV)
- Drinking fountain
- Outdoor shower
- Play space (neighbourhood)
- Public art
- Skate/BMX facility (dedicated)
- Sports infrastructure (permanent)
- Sports infrastructure (temporary)



Example: Warrandyte Park, Craigie



Example: Forrest Park, Padbury

### Infrastructure by classification (R = Recommended; O = Optional; N = Not supported):

Sports Park	
Regional Sports Park	N
District Sports Park	R*
Neighbourhood Sports Park	R†
Local Sports Park	N
Urban Landscaping	
Major Urban Landscaping	N
High Priority Urban Landscaping	N
Medium Priority Urban Landscaping	N
Low Priority Urban Landscaping	N

Recreation Park	
Regional Recreation Park	N
District Recreation Park	N
Neighbourhood Recreation Park	N
Local Recreation Park	N
Natural Area	
Major Conservation Natural Area	N
High Priority Natural Area	N
Medium Priority Natural Area	N
Low Priority Natural Area	N

\*At least one of (alternatives: sports facility (large); toilet/changeroom facility).

†At least one of (alternatives: toilet/changeroom facility; toilet facility (free-standing)).

## Sports infrastructure (permanent)

Permanent sports infrastructure enables organised sports activities to be undertaken in an outdoor setting. This infrastructure includes purpose-built equipment and surfaces (such as netball courts, tennis courts, bowling greens and baseball dugouts, amongst others). Permanent sports infrastructure is supported in public open spaces where there is sufficient space available, and where there is a reasonable expectation that participation levels in the sport are likely to remain high. The type of permanent sports infrastructure installed should be based on demonstrated need, utilisation levels, the availability of complementary infrastructure, and broader sporting trends.

### Co-located infrastructure (required):

Nil

### Complementary infrastructure:

- Basketball pad
- Bench seating
- Car parking
- Drinking fountain
- Irrigation
- Lighting (sports floodlighting)
- Skate/BMX facility (incidental)
- Sports facility (large)
- Sports facility (small)
- Sports infrastructure (temporary)
- Toilet/changeroom facility
- Toilet facility (free-standing)
- Waste bin



Example: Belrose Park, Kallaroo



Example: James Cook Park, Hillarys

### Infrastructure by classification (R = Recommended; O = Optional; N = Not supported):

Sports Park	
Regional Sports Park	R
District Sports Park	R
Neighbourhood Sports Park	O
Local Sports Park	O
Urban Landscaping	
Major Urban Landscaping	N
High Priority Urban Landscaping	N
Medium Priority Urban Landscaping	N
Low Priority Urban Landscaping	N

Recreation Park	
Regional Recreation Park	N
District Recreation Park	N
Neighbourhood Recreation Park	N
Local Recreation Park	N
Natural Area	
Major Conservation Natural Area	N
High Priority Natural Area	N
Medium Priority Natural Area	N
Low Priority Natural Area	N

## Sports infrastructure (temporary)

Temporary sports infrastructure enables organised sports activities to be undertaken in an outdoor setting. This infrastructure is seasonal and includes goals for sports such as AFL, rugby and soccer. Temporary sports infrastructure is supported in public open spaces where there is sufficient space available. The type of temporary sports infrastructure installed should be based on demonstrated need and utilisation levels.

### Co-located infrastructure (required):

Nil

### Complementary infrastructure:

- Basketball pad
- Bench seating
- Car parking
- Drinking fountain
- Irrigation
- Lighting (sports floodlighting)
- Sports facility (large)
- Sports facility (small)
- Sports infrastructure (permanent)
- Toilet/changeroom facility
- Toilet facility (free-standing)
- Waste bin



Example: Christchurch Park, Currumbine



Example: Marri Park, Duncraig

### Infrastructure by classification (R = Recommended; O = Optional; N = Not supported):

Sports Park	
Regional Sports Park	R
District Sports Park	O
Neighbourhood Sports Park	O
Local Sports Park	O
Urban Landscaping	
Major Urban Landscaping	N
High Priority Urban Landscaping	N
Medium Priority Urban Landscaping	N
Low Priority Urban Landscaping	N

Recreation Park	
Regional Recreation Park	N
District Recreation Park	N
Neighbourhood Recreation Park	N
Local Recreation Park	N
Natural Area	
Major Conservation Natural Area	N
High Priority Natural Area	N
Medium Priority Natural Area	N
Low Priority Natural Area	N



## Storage facility (free-standing)

Free-standing storage facilities enable regular user groups to store sports equipment and maintenance equipment on-site in public open spaces. Free-standing storage facilities are supported in public open spaces where there is demonstrated need.

### Co-located infrastructure (required):

Nil

### Complementary infrastructure:

- Lighting (security and amenity)
- Public art
- Sports infrastructure (permanent)
- Sports infrastructure (temporary)



Example: Robin Park, Sorrento



Example: MacDonald Park, Padbury

### Infrastructure by classification (R = Recommended; O = Optional; N = Not supported):

Sports Park	
Regional Sports Park	O
District Sports Park	O
Neighbourhood Sports Park	O
Local Sports Park	O
Urban Landscaping	
Major Urban Landscaping	N
High Priority Urban Landscaping	N
Medium Priority Urban Landscaping	N
Low Priority Urban Landscaping	N

Recreation Park	
Regional Recreation Park	O
District Recreation Park	N
Neighbourhood Recreation Park	N
Local Recreation Park	N
Natural Area	
Major Conservation Natural Area	N
High Priority Natural Area	N
Medium Priority Natural Area	N
Low Priority Natural Area	N



## Toilet/changeroom facility

Toilet and changeroom facilities support sports clubs to undertake training and games in an overflow capacity, and to store equipment in public open spaces. Toilet and changeroom facilities are supported in public open spaces with appropriate access to power, water and sewerage, and where regular sports activities are likely to occur. The design of toilet and changeroom facilities may include a publicly-accessible toilet, storage and, if appropriate, a kiosk/hutch.

### Co-located infrastructure (required):

- Lighting (security and amenity)
- Path network
- Waste bin

### Complementary infrastructure:

- Barbeque
- Car parking
- Drinking fountain
- Lighting (sports floodlighting)
- Outdoor shower
- Picnic structure
- Play space (district)
- Play space (neighbourhood)
- Play space (regional)
- Public art
- Recreation infrastructure
- Skate/BMX facility (dedicated)
- Sports infrastructure (permanent)
- Sports infrastructure (temporary)



Example: Glengarry Park, Duncraig



Example: Hawker Park, Warwick

### Infrastructure by classification (R = Recommended; O = Optional; N = Not supported):

Sports Park		Recreation Park	
Regional Sports Park	N	Regional Recreation Park	R <sup>‡</sup>
District Sports Park	R <sup>*</sup>	District Recreation Park	O
Neighbourhood Sports Park	R <sup>†</sup>	Neighbourhood Recreation Park	N
Local Sports Park	O	Local Recreation Park	N
Urban Landscaping		Natural Area	
Major Urban Landscaping	N	Major Conservation Natural Area	N
High Priority Urban Landscaping	N	High Priority Natural Area	N
Medium Priority Urban Landscaping	N	Medium Priority Natural Area	N
Low Priority Urban Landscaping	N	Low Priority Natural Area	N

\*At least one of (alternatives: sports facility (large); sports facility (small)).

†At least one of (alternatives: sports facility (small); toilet facility (free-standing)).

‡At least one of (alternatives: community facility (large); toilet facility (free-standing)).

## Toilet facility (free-standing)

Free-standing toilet facilities encourage long-stay usage in public open spaces where there are no associated playing fields. Free-standing toilets are supported in public open spaces with appropriate access to power, water and sewerage, and where long-stay usage is likely to occur.

### Co-located infrastructure (required):

- Lighting (security and amenity)
- Path network
- Waste bin

### Complementary infrastructure:

- Barbeque
- Car parking
- Drinking fountain
- Lighting (sports floodlighting)
- Outdoor shower
- Picnic structure
- Play space (regional)
- Play space (district)
- Play space (neighbourhood)
- Public art
- Recreation infrastructure
- Skate/BMX facility (dedicated)
- Sports infrastructure (permanent)
- Sports infrastructure (temporary)



Example: Shepherds Bush Park, Kingsley



Example: Central Park, Joondalup

### Infrastructure by classification (R = Recommended; O = Optional; N = Not supported):

Sports Park	
Regional Sports Park	N
District Sports Park	N
Neighbourhood Sports Park	R*
Local Sports Park	O
Urban Landscaping	
Major Urban Landscaping	N
High Priority Urban Landscaping	N
Medium Priority Urban Landscaping	N
Low Priority Urban Landscaping	N

Recreation Park	
Regional Recreation Park	R†
District Recreation Park	O
Neighbourhood Recreation Park	N
Local Recreation Park	N
Natural Area	
Major Conservation Natural Area	O
High Priority Natural Area	N
Medium Priority Natural Area	N
Low Priority Natural Area	N

\*At least one of (alternatives: sports facility (small); toilet/changeroom facility).

†At least one of (alternatives: community facility (large); toilet/changeroom facility).

## Waste bin

Waste bins encourage the responsible disposal of litter and help keep public open spaces clean and attractive for visitors. Waste bins are supported in all public open spaces, as required. The type and number of waste bins will be determined by the size and level of usage of the public open space. Temporary waste bins may also be installed in public open spaces which experience high levels of waste disposal or excessive littering.

### Co-located infrastructure (required):

Nil

### Complementary infrastructure:

- Barbeque
- Basketball pad
- Dog facilities
- Picnic structure
- Play space (regional)
- Play space (district)
- Play space (neighbourhood)
- Play space (local)
- Recreation infrastructure
- Skate/BMX facility (dedicated)
- Skate/BMX facility (incidental)
- Sports facility (large)
- Sports facility (small)
- Sports infrastructure (permanent)
- Sports infrastructure (temporary)
- Toilet/changeroom facility
- Toilet facility (free-standing)



Example: Baltusrol Park, Connolly



Example: Central Walk, Joondalup

### Infrastructure by classification (R = Recommended; O = Optional; N = Not supported):

Sports Park	
Regional Sports Park	R
District Sports Park	R
Neighbourhood Sports Park	R
Local Sports Park	O
Urban Landscaping	
Major Urban Landscaping	O
High Priority Urban Landscaping	O
Medium Priority Urban Landscaping	O
Low Priority Urban Landscaping	O

Recreation Park	
Regional Recreation Park	R
District Recreation Park	R
Neighbourhood Recreation Park	O
Local Recreation Park	O
Natural Area	
Major Conservation Natural Area	R
High Priority Natural Area	O
Medium Priority Natural Area	O
Low Priority Natural Area	O



Appendix 2 — Infrastructure by classification

R = Recommended  
O = Optional  
N = Not supported

	Artificial shade	Barbeque	Basketball pad	Bench seating	Car parking	Closed-circuit television (CCTV)	Community facility (large)	Community facility (small)	Dog exercise area (fenced)	Dog facilities	Drinking fountain	Entry statement	Fencing (conservation)	Fencing (park)	Fencing (special)	Fitness equipment	Irrigation	Lighting (security and amenity)	Lighting (sports floodlighting)	Lookout/viewing platform	Monument/memorial (permanent)	Outdoor shower	Path network	Picnic structure	Play space (regional)	Play space (district)	Play space (neighbourhood)	Play space (local)	Public art	Recreation infrastructure	Signage (interpretive)	Signage (park name)	Signage (wayfinding)	Skate/BMX facility (dedicated)	Skate/BMX facility (incidental)	Sports facility (large)	Sports facility (small)	Sports infrastructure (permanent)	Sports infrastructure (temporary)	Storage facility (free-standing)	Toilet/changeroom facility	Toilet facility (free-standing)	Waste bin
Sports Park																																											
Regional Sports Park	O	O	O	R	R	O	N	N	O	O	R	N	N	R	O	O	R	R	R	N	O	N	R	O	O	N	N	N	O	O	O	R	O	O	O	R	N	R	R	O	N	N	R
District Sports Park	O	O	O	R	R	O	N	N	O	O	R	N	N	R	O	O	R	R	R	N	O	N	R	O	N	O	N	N	O	O	O	R	O	O	O	R*	R*	R	O	O	R*	N	R
Neighbourhood Sports Park	O	O	O	R	O	O	N	N	N	O	O	N	N	R	O	N	R	O	R	N	O	N	R	O	N	N	O	N	O	O	N	R	O	N	O	N	R*	O	O	O	R*	R*	R
Local Sports Park	N	N	N	R	N	O	N	N	N	O	O	N	N	R	O	N	R	O	O	N	O	N	O	N	N	N	N	O	N	O	N	R	N	N	O	N	N	O	O	O	O	O	O
Recreation Park																																											
Regional Recreation Park	O	R	O	R	R	O	R*	N	O	O	R	N	N	R	O	O	R	R	O	O	O	O	R	R	R	N	N	N	O	O	O	R	O	O	O	N	N	N	N	O	R*	R*	R
District Recreation Park	O	R	O	R	O	O	O	O	O	O	R	N	N	R	O	O	R	R	O	O	O	O	R	R	N	R	N	N	O	O	O	R	O	O	O	N	N	N	N	N	O	O	R
Neighbourhood Recreation Park	O	O	O	O	N	O	N	O	N	O	O	N	N	R	O	N	R	O	N	O	O	O	O	O	N	N	O	N	O	O	N	R	O	N	O	N	N	N	N	N	N	N	O
Local Recreation Park	N	N	N	O	N	O	N	N	N	O	N	N	N	R	O	N	O	O	N	N	O	N	O	N	N	N	N	O	N	O	N	R	N	N	O	N	N	N	N	N	N	N	O
Urban Landscaping																																											
Major Urban Landscaping	N	N	N	O	R	O	N	N	N	N	N	O	N	N	O	N	R	O	N	N	N	N	O	N	N	N	N	N	O	N	N	N	O	N	O	N	N	N	N	N	N	N	O
High Priority Urban Landscaping	N	N	N	O	O	O	N	N	N	N	N	O	N	N	O	N	O	O	N	N	N	N	O	N	N	N	N	N	O	N	N	N	O	N	O	N	N	N	N	N	N	N	O
Medium Priority Urban Landscaping	N	N	N	O	N	O	N	N	N	N	N	N	N	N	O	N	N	O	N	N	N	N	O	N	N	N	N	N	N	N	N	N	N	N	O	N	N	N	N	N	N	N	O
Low Priority Urban Landscaping	N	N	N	O	N	O	N	N	N	N	N	N	N	N	O	N	N	O	N	N	N	N	O	N	N	N	N	N	N	N	N	N	N	N	O	N	N	N	N	N	N	N	O
Natural Area																																											
Major Conservation Natural Area	N	N	N	O	O	O	N	N	N	O	O	N	R	O	O	N	N	O	N	O	O	O	R	O	N	N	N	N	O	O	R	R	O	N	O	N	N	N	N	N	N	O	R
High Priority Natural Area	N	N	N	O	N	O	N	N	N	N	N	N	R	O	O	N	N	O	N	O	O	N	O	N	N	N	N	N	N	N	O	R	O	N	O	N	N	N	N	N	N	N	O
Medium Priority Natural Area	N	N	N	O	N	O	N	N	N	N	N	N	O	O	O	N	N	O	N	N	N	N	O	N	N	N	N	N	N	N	O	R	O	N	O	N	N	N	N	N	N	N	O
Low Priority Natural Area	N	N	N	O	N	O	N	N	N	N	N	N	O	O	O	N	N	O	N	N	N	N	O	N	N	N	N	N	N	N	O	R	N	N	N	N	N	N	N	N	N	N	O

\*At least one of (per classification type).



# Public Open Space by Classification

## Sports Park

Public open space	Suburb	Size	Sub-classification
Percy Doyle Reserve	Duncraig	210,850 sq m	Regional Sports Park
Warwick Open Space	Warwick	93,360 sq m	Regional Sports Park
Chichester Park	Woodvale	124,504 sq m	District Sports Park
Heathridge Park	Heathridge	95,980 sq m	District Sports Park
Iluka District Open Space	Iluka	86,635 sq m	District Sports Park
James Cook Park	Hillarys	46,901 sq m	District Sports Park
Kingsley Park	Kingsley	59,318 sq m	District Sports Park
Macdonald Park	Padbury	119,028 sq m	District Sports Park
Marri Park	Duncraig	58,879 sq m	District Sports Park
Penistone Park	Greenwood	114,255 sq m	District Sports Park
Seacrest Park	Sorrento	91,061 sq m	District Sports Park
Timberlane Park	Woodvale	53,547 sq m	District Sports Park
Warrandyte Park	Craigie	72,200 sq m	District Sports Park
Admiral Park	Heathridge	46,099 sq m	Neighbourhood Sports Park
Barridale Park	Kingsley	42,040 sq m	Neighbourhood Sports Park
Beldon Park	Beldon	35,094 sq m	Neighbourhood Sports Park
Blackall Park	Greenwood	48,868 sq m	Neighbourhood Sports Park
Bramston Park	Burns Beach	37,744 sq m	Neighbourhood Sports Park
Bridgewater Park	Kallaroo	24,482 sq m	Neighbourhood Sports Park
Caledonia Park	Currambine	34,080 sq m	Neighbourhood Sports Park
Carlton Park	Currambine	16,700 sq m	Neighbourhood Sports Park
Charonia Park	Mullaloo	39,476 sq m	Neighbourhood Sports Park
Christchurch Park	Currambine	41,813 sq m	Neighbourhood Sports Park
Ellersdale Park	Warwick	35,760 sq m	Neighbourhood Sports Park
Emerald Park	Edgewater	63,682 sq m	Neighbourhood Sports Park
Falkland Park	Kinross	54,171 sq m	Neighbourhood Sports Park
Flinders Park	Hillarys	80,271 sq m	Neighbourhood Sports Park
Forrest Park	Padbury	34,491 sq m	Neighbourhood Sports Park
Glengarry Park	Duncraig	57,033 sq m	Neighbourhood Sports Park
Hawker Park	Warwick	34,635 sq m	Neighbourhood Sports Park
Hillarys Park	Hillarys	70,649 sq m	Neighbourhood Sports Park
Juniper Park	Duncraig	47,055 sq m	Neighbourhood Sports Park
Korella Park	Mullaloo	15,517 sq m	Neighbourhood Sports Park
Lexcen Park	Ocean Reef	39,329 sq m	Neighbourhood Sports Park
Littorina Park	Heathridge	28,100 sq m	Neighbourhood Sports Park
MacNaughton Park	Kinross	34,740 sq m	Neighbourhood Sports Park
Melene Park	Duncraig	43,226 sq m	Neighbourhood Sports Park
Mirror Park	Ocean Reef	46,406 sq m	Neighbourhood Sports Park
Moolanda Park	Kingsley	45,757 sq m	Neighbourhood Sports Park
Ocean Reef Park	Ocean Reef	43,310 sq m	Neighbourhood Sports Park
Otago Park	Craigie	28,537 sq m	Neighbourhood Sports Park
Prince Regent Park	Heathridge	49,112 sq m	Neighbourhood Sports Park
Robin Park	Sorrento	42,841 sq m	Neighbourhood Sports Park
Santiago Park	Ocean Reef	60,703 sq m	Neighbourhood Sports Park
Warrigal Park	Greenwood	33,260 sq m	Neighbourhood Sports Park
Windermere Park	Joondalup	46,431 sq m	Neighbourhood Sports Park
Belrose Park	Kallaroo	27,433 sq m	Local Sports Park
Callander Park	Kinross	15,701 sq m	Local Sports Park
Parkside Park	Woodvale	27,469 sq m	Local Sports Park

**Recreation Park**

Public open space	Suburb	Size	Sub-classification
Burns Beach Park	Burns Beach	10,292 sq m	Regional Recreation Park
Central Park	Joondalup	41,644 sq m	Regional Recreation Park
Hillarys Beach Park	Hillarys	60,157 sq m	Regional Recreation Park
Neil Hawkins Park	Joondalup	40,527 sq m	Regional Recreation Park
Sorrento Beach Park	Sorrento	19,715 sq m	Regional Recreation Park
Tom Simpson Park	Mullaloo	40,378 sq m	Regional Recreation Park
Blackboy Park	Mullaloo	20,750 sq m	District Recreation Park
Braden Park	Marmion	47,495 sq m	District Recreation Park
Camberwarra Park	Craigie	23,057 sq m	District Recreation Park
Cockman Park	Greenwood	44,293 sq m	District Recreation Park
Dampier Park	Kallaroo	23,183 sq m	District Recreation Park
Delamere Park	Currambine	16,201 sq m	District Recreation Park
Haddington Park	Beldon	18,499 sq m	District Recreation Park
Iluka Beach Park	Iluka	8,694 sq m	District Recreation Park
Mawson Park	Hillarys	92,366 sq m	District Recreation Park
Picnic Cove Park	Edgewater	28,582 sq m	District Recreation Park
Pinnaroo Point Beach Park	Hillarys	16,194 sq m	District Recreation Park
Shepherds Bush Park	Kingsley	5,376 sq m	District Recreation Park
Sir James McCusker Park	Iluka	45,692 sq m	District Recreation Park
Whitfords West Park	Kallaroo	35,144 sq m	District Recreation Park
Annato Park	Greenwood	20,760 sq m	Neighbourhood Recreation Park
Aristride Park	Kallaroo	10,299 sq m	Neighbourhood Recreation Park
Atma Park	Iluka	3,107 sq m	Neighbourhood Recreation Park
Baltusrol Park	Connolly	19,558 sq m	Neighbourhood Recreation Park
Beachside Park	Burns Beach	10,066 sq m	Neighbourhood Recreation Park
Beaumaris Park	Ocean Reef	8,617 sq m	Neighbourhood Recreation Park
Beaumont Park	Greenwood	6,545 sq m	Neighbourhood Recreation Park
Bengello Park	Burns Beach	19,121 sq m	Neighbourhood Recreation Park
Blackpool Park	Iluka	4,177 sq m	Neighbourhood Recreation Park
Blackthorn Park	Greenwood	31,248 sq m	Neighbourhood Recreation Park
Bonnie Doon Park	Connolly	29,599 sq m	Neighbourhood Recreation Park
Broadbeach Park	Hillarys	41,912 sq m	Neighbourhood Recreation Park
Candlewood Park	Joondalup	6,430 sq m	Neighbourhood Recreation Park
Castlecrag Park	Kallaroo	23,662 sq m	Neighbourhood Recreation Park
Chadstone Park	Craigie	6,464 sq m	Neighbourhood Recreation Park
Charing Cross Park	Joondalup	5,858 sq m	Neighbourhood Recreation Park
Churton Park	Warwick	14,731 sq m	Neighbourhood Recreation Park
Clermont Park	Currambine	3,761 sq m	Neighbourhood Recreation Park
Coolibah Park	Duncraig	5,494 sq m	Neighbourhood Recreation Park
De Crillon Park	Currambine	5,145 sq m	Neighbourhood Recreation Park
Discovery Park	Iluka	9,153 sq m	Neighbourhood Recreation Park
Elcar Park	Joondalup	19,014 sq m	Neighbourhood Recreation Park
Fairway Park	Connolly	3,465 sq m	Neighbourhood Recreation Park
Fenton Park	Hillarys	4,598 sq m	Neighbourhood Recreation Park
Fernwood Park	Padbury	15,266 sq m	Neighbourhood Recreation Park
Galston Park	Duncraig	22,637 sq m	Neighbourhood Recreation Park
Gascoyne Park	Woodvale	52,226 sq m	Neighbourhood Recreation Park
Geneff Park	Sorrento	20,601 sq m	Neighbourhood Recreation Park
Gibson Park	Padbury	37,050 sq m	Neighbourhood Recreation Park
Glenbank Park	Kallaroo	5,756 sq m	Neighbourhood Recreation Park
Glenmere Park	Warwick	7,919 sq m	Neighbourhood Recreation Park
Gradient Park	Beldon	24,089 sq m	Neighbourhood Recreation Park

Public open space	Suburb	Size	Sub-classification
Granadilla Park	Duncraig	37,863 sq m	Neighbourhood Recreation Park
Grand Ocean Park	Burns Beach	12,662 sq m	Neighbourhood Recreation Park
Greenwich Park	Kingsley	16,367 sq m	Neighbourhood Recreation Park
Harbour View Park	Hillarys	10,753 sq m	Neighbourhood Recreation Park
Hartley Park	Greenwood	6,206 sq m	Neighbourhood Recreation Park
Hillwood Park (North)	Warwick	6,758 sq m	Neighbourhood Recreation Park
Hilton Park	Duncraig	18,413 sq m	Neighbourhood Recreation Park
Huntingdale Park	Connolly	9,102 sq m	Neighbourhood Recreation Park
Illawong Park	Kingsley	5,458 sq m	Neighbourhood Recreation Park
Kanangra Park	Greenwood	32,818 sq m	Neighbourhood Recreation Park
Kiernan Park	Kallaroo	24,634 sq m	Neighbourhood Recreation Park
Killen Park	Duncraig	4,393 sq m	Neighbourhood Recreation Park
Lacepede Park	Sorrento	20,377 sq m	Neighbourhood Recreation Park
Lady Evelyn Park	Joondalup	5,935 sq m	Neighbourhood Recreation Park
Lakevalley Park	Edgewater	3,300 sq m	Neighbourhood Recreation Park
Legana Park	Kingsley	35,380 sq m	Neighbourhood Recreation Park
Leichhardt Park	Padbury	22,402 sq m	Neighbourhood Recreation Park
Manapouri Park	Joondalup	7,796 sq m	Neighbourhood Recreation Park
Maquire Park	Hillarys	10,630 sq m	Neighbourhood Recreation Park
McIntyre Park	Burns Beach	12,123 sq m	Neighbourhood Recreation Park
Menteith Park	Kinross	10,348 sq m	Neighbourhood Recreation Park
Montague Park	Kallaroo	10,739 sq m	Neighbourhood Recreation Park
Nanika Park	Joondalup	6,471 sq m	Neighbourhood Recreation Park
Newcombe Park	Padbury	35,915 sq m	Neighbourhood Recreation Park
Newham Park	Kingsley	18,094 sq m	Neighbourhood Recreation Park
Noal Gannon Park	Duncraig	16,041 sq m	Neighbourhood Recreation Park
Oahu Park	Hillarys	10,583 sq m	Neighbourhood Recreation Park
Ocean Reef Beach Park	Ocean Reef	6,269 sq m	Neighbourhood Recreation Park
Oleaster Park	Greenwood	8,223 sq m	Neighbourhood Recreation Park
Parin Park	Greenwood	6,158 sq m	Neighbourhood Recreation Park
Pattaya Park	Iluka	5,277 sq m	Neighbourhood Recreation Park
Pinnacle Park	Craigie	3,929 sq m	Neighbourhood Recreation Park
Plumdale Park	Woodvale	17,230 sq m	Neighbourhood Recreation Park
Poseidon Park	Heathridge	9,958 sq m	Neighbourhood Recreation Park
Quarry Ramble Park	Edgewater	15,041 sq m	Neighbourhood Recreation Park
Regents Park	Joondalup	5,268 sq m	Neighbourhood Recreation Park
Revitalise Park	Craigie	6,360 sq m	Neighbourhood Recreation Park
Sandalford Park	Beldon	36,312 sq m	Neighbourhood Recreation Park
Santa Ana Park	Currambine	3,188 sq m	Neighbourhood Recreation Park
Sheoak Park	Greenwood	21,321 sq m	Neighbourhood Recreation Park
Simpson Park	Padbury	16,322 sq m	Neighbourhood Recreation Park
Southern Cross Park	Ocean Reef	15,437 sq m	Neighbourhood Recreation Park
Tarolinta Park	Ocean Reef	7,979 sq m	Neighbourhood Recreation Park
Tom Walker Park	Sorrento	22,540 sq m	Neighbourhood Recreation Park
Trappers Park	Woodvale	20,217 sq m	Neighbourhood Recreation Park
Triton Park	Mullaloo	8,785 sq m	Neighbourhood Recreation Park
Wallangarra Park	Kingsley	5,962 sq m	Neighbourhood Recreation Park
Wentworth Park	Padbury	5,627 sq m	Neighbourhood Recreation Park
Whitfords East Park	Craigie	26,836 sq m	Neighbourhood Recreation Park
Wolinski Park	Mullaloo	39,786 sq m	Neighbourhood Recreation Park
Aberdare Park	Warwick	11,519 sq m	Local Recreation Park
Abrolhos Park	Heathridge	13,813 sq m	Local Recreation Park
Adelaide Park	Craigie	20,640 sq m	Local Recreation Park
Albacore Park	Sorrento	16,762 sq m	Local Recreation Park

Public open space	Suburb	Size	Sub-classification
Albion Park	Craigie	5,196 sq m	Local Recreation Park
Albright Park	Joondalup	1,061 sq m	Local Recreation Park
Alder Park	Duncraig	8,872 sq m	Local Recreation Park
Aldgate Park	Joondalup	2,149 sq m	Local Recreation Park
Alfreton Park	Duncraig	10,692 sq m	Local Recreation Park
Alidade Park	Beldon	2,922 sq m	Local Recreation Park
Anemone Park	Mullaloo	3,075 sq m	Local Recreation Park
Balanus Park	Heathridge	16,495 sq m	Local Recreation Park
Banks Park	Hillarys	10,223 sq m	Local Recreation Park
Banksia Park	Marmion	2,209 sq m	Local Recreation Park
Barclay Park	Padbury	2,296 sq m	Local Recreation Park
Barwon Park	Craigie	18,141 sq m	Local Recreation Park
Birch Park	Greenwood	5,525 sq m	Local Recreation Park
Blue Lake Park	Joondalup	20,650 sq m	Local Recreation Park
Bracken Park	Duncraig	2,832 sq m	Local Recreation Park
Brazier Park	Padbury	6,719 sq m	Local Recreation Park
Brisbane Park	Padbury	14,371 sq m	Local Recreation Park
Buckthorn Park	Duncraig	8,558 sq m	Local Recreation Park
Byrne Park	Padbury	2,794 sq m	Local Recreation Park
Cadogan Park	Kingsley	12,190 sq m	Local Recreation Park
Calectasia Park	Greenwood	17,680 sq m	Local Recreation Park
Callion Park	Padbury	2,373 sq m	Local Recreation Park
Calthorpe Park	Kingsley	4,467 sq m	Local Recreation Park
Captain Park	Heathridge	2,144 sq m	Local Recreation Park
Carr Park	Warwick	7,304 sq m	Local Recreation Park
Castlefern Park	Duncraig	11,568 sq m	Local Recreation Park
Chelsea Park	Kingsley	12,348 sq m	Local Recreation Park
Chelsford Park	Warwick	16,373 sq m	Local Recreation Park
Cinque Ports Park	Connolly	4,874 sq m	Local Recreation Park
Circle Park	Warwick	1,542 sq m	Local Recreation Park
Clare Park	Sorrento	2,545 sq m	Local Recreation Park
Cliff Park	Marmion	2,724 sq m	Local Recreation Park
Clifford Coleman Park	Marmion	2,873 sq m	Local Recreation Park
Conica Park	Hillarys	11,656 sq m	Local Recreation Park
Conidae Park	Heathridge	15,271 sq m	Local Recreation Park
Cornish Park	Woodvale	5,809 sq m	Local Recreation Park
Culwalla Park	Kallaroo	6,614 sq m	Local Recreation Park
Cumberland Park	Beldon	1,110 sq m	Local Recreation Park
Cunningham Park	Padbury	7,516 sq m	Local Recreation Park
Dandjoo Park	Greenwood	8,141 sq m	Local Recreation Park
Dardanus Park	Heathridge	3,430 sq m	Local Recreation Park
Delonix Park	Woodvale	2,929 sq m	Local Recreation Park
Dollis Park	Kingsley	4,246 sq m	Local Recreation Park
Doncaster Park	Currambine	8,200 sq m	Local Recreation Park
Earlsferry Park	Kinross	8,683 sq m	Local Recreation Park
Edgewater Park	Edgewater	9,724 sq m	Local Recreation Park
Embankment Park	Joondalup	1,033 sq m	Local Recreation Park
Ensign Park	Beldon	2,532 sq m	Local Recreation Park
Fairmont Park	Currambine	5,088 sq m	Local Recreation Park
Faversham Park	Heathridge	11,327 sq m	Local Recreation Park
Filbert Park	Greenwood	7,182 sq m	Local Recreation Park
Finney Park	Marmion	10,557 sq m	Local Recreation Park
Forest Hill Park East	Kingsley	5,879 sq m	Local Recreation Park
Forest Hill Park West	Kingsley	4,634 sq m	Local Recreation Park



Public open space	Suburb	Size	Sub-classification
Fraser Park	Padbury	3,814 sq m	Local Recreation Park
Geddes Park	Duncraig	5,034 sq m	Local Recreation Park
George Sears Park	Greenwood	17,681 sq m	Local Recreation Park
Gerda Park	Greenwood	5,068 sq m	Local Recreation Park
Gleddon Park	Hillarys	4,620 sq m	Local Recreation Park
Greenlaw Park	Duncraig	25,466 sq m	Local Recreation Park
Greenshank Park	Joondalup	4,183 sq m	Local Recreation Park
Gunida Park	Mullaloo	6,348 sq m	Local Recreation Park
Harman Park	Sorrento	15,403 sq m	Local Recreation Park
Herreshoff Park	Ocean Reef	8,436 sq m	Local Recreation Park
Hilltop Park	Edgewater	11,510 sq m	Local Recreation Park
Hillwood Park (South)	Warwick	5,291 sq m	Local Recreation Park
Kallaroo Park	Mullaloo	18,908 sq m	Local Recreation Park
Katrine Park	Joondalup	3,992 sq m	Local Recreation Park
Kelvin Park	Duncraig	13,543 sq m	Local Recreation Park
Keppell Park	Marmion	10,288 sq m	Local Recreation Park
Kilrenny Park	Greenwood	5,108 sq m	Local Recreation Park
Kimberley Park	Hillarys	4,441 sq m	Local Recreation Park
Kingfisher Park	Kingsley	3,015 sq m	Local Recreation Park
Lanark Park	Duncraig	1,421 sq m	Local Recreation Park
Larkspur Park	Heathridge	31,978 sq m	Local Recreation Park
Leaside Park	Greenwood	3,359 sq m	Local Recreation Park
Leeward Park	Hillarys	8,396 sq m	Local Recreation Park
Lehmann Park	Kingsley	8,111 sq m	Local Recreation Park
Lysander Park	Heathridge	30,503 sq m	Local Recreation Park
Macaulay Park	Duncraig	6,284 sq m	Local Recreation Park
Marbella Park	Hillarys	3,581 sq m	Local Recreation Park
Marbella Park Natural Area	Hillarys	2,115 sq m	Local Recreation Park
McCubbin Park	Woodvale	1,907 sq m	Local Recreation Park
McKinlay Park	Padbury	4,777 sq m	Local Recreation Park
McKirdy Park	Marmion	5,026 sq m	Local Recreation Park
Merrifield Park	Kallaroo	3,790 sq m	Local Recreation Park
Monument Park	Beldon	3,410 sq m	Local Recreation Park
Nash Park	Hillarys	1,412 sq m	Local Recreation Park
Negresco Park	Currambine	6,093 sq m	Local Recreation Park
Ninnis Park	Hillarys	3,788 sq m	Local Recreation Park
Oakapple Park	Duncraig	9,351 sq m	Local Recreation Park
Orient Park	Hillarys	3,522 sq m	Local Recreation Park
Oxley Park Central	Padbury	1,635 sq m	Local Recreation Park
Oxley Park North	Padbury	11,461 sq m	Local Recreation Park
Parkinson Park	Hillarys	8,336 sq m	Local Recreation Park
Paterson Park	Padbury	2,891 sq m	Local Recreation Park
Paveta Park	Greenwood	4,868 sq m	Local Recreation Park
Pentland Park	Duncraig	871 sq m	Local Recreation Park
Piccadilly Park	Joondalup	8,354 sq m	Local Recreation Park
Porteous Park	Sorrento	5,272 sq m	Local Recreation Park
Portree Park	Duncraig	30,764 sq m	Local Recreation Park
Portwood Park	Joondalup	1,531 sq m	Local Recreation Park
Poynter Park	Duncraig	24,859 sq m	Local Recreation Park
Queensbury Park	Joondalup	1,595 sq m	Local Recreation Park
Ranford Park	Hillarys	4,344 sq m	Local Recreation Park
Rev John Smithies Park	Kingsley	1,736 sq m	Local Recreation Park
Ridge Park	Edgewater	4,033 sq m	Local Recreation Park
Riversdale Park	Currambine	3,516 sq m	Local Recreation Park

Public open space	Suburb	Size	Sub-classification
Rodgers Park	Greenwood	11,655 sq m	Local Recreation Park
Roxburgh Park	Kinross	6,256 sq m	Local Recreation Park
Rutherglen Park	Kinross	4,465 sq m	Local Recreation Park
Salata Park	Duncraig	29,875 sq m	Local Recreation Park
Sanday Park	Warwick	995 sq m	Local Recreation Park
Scott Park	Hillarys	5,444 sq m	Local Recreation Park
Sherington Park	Greenwood	8,622 sq m	Local Recreation Park
Sittella Park East	Joondalup	1,300 sq m	Local Recreation Park
Southport Park	Burns Beach	7,111 sq m	Local Recreation Park
Spoonbill Park	Kingsley	2,391 sq m	Local Recreation Park
Springvale Park	Warwick	12,130 sq m	Local Recreation Park
St Michael's Park	Connolly	10,270 sq m	Local Recreation Park
Stanford Park	Kallaroo	8,643 sq m	Local Recreation Park
Stilt Park	Joondalup	1,408 sq m	Local Recreation Park
Stonehaven Park	Kinross	8,031 sq m	Local Recreation Park
Sweeney Park	Padbury	3,807 sq m	Local Recreation Park
Sycamore Park	Duncraig	7,700 sq m	Local Recreation Park
Talbot Park	Kingsley	10,720 sq m	Local Recreation Park
Talbot Park Natural Area	Kingsley	2,096 sq m	Local Recreation Park
Telopia Park	Duncraig	4,881 sq m	Local Recreation Park
Thornbill Park	Joondalup	1,546 sq m	Local Recreation Park
Thornton Park	Kinross	21,542 sq m	Local Recreation Park
Timbercrest Park	Woodvale	6,349 sq m	Local Recreation Park
Toowoon Park	Burns Beach	5,513 sq m	Local Recreation Park
Trailwood Park	Woodvale	20,840 sq m	Local Recreation Park
Trig Point Park	Ocean Reef	14,376 sq m	Local Recreation Park
Tuart Park	Edgewater	5,934 sq m	Local Recreation Park
Walsh Park	Joondalup	431 sq m	Local Recreation Park
Waltham Park	Mullaloo	2,813 sq m	Local Recreation Park
Wanbrow Park	Duncraig	4,697 sq m	Local Recreation Park
Wandina Park	Duncraig	5,376 sq m	Local Recreation Park
Water Tower Park	Joondalup	6,284 sq m	Local Recreation Park
Waterview Park	Woodvale	3,748 sq m	Local Recreation Park
Wedgewood Park	Edgewater	12,624 sq m	Local Recreation Park
Wesley Park	Joondalup	1,929 sq m	Local Recreation Park
Windmill Park	Burns Beach	5,125 sq m	Local Recreation Park
Woodlea Park	Joondalup	212 sq m	Local Recreation Park

## Urban Landscaping

**Note:** This list mostly includes urban landscaping identified in the previous framework. It does not include road verges, medians, streetscapes or drainage sumps.

Public open space	Suburb	Size	Sub-classification
Bigola Park	Kallaroo	711 sq m	Medium Priority Urban Landscaping
Burns Park	Burns Beach	4,724 sq m	Medium Priority Urban Landscaping
Edgewater Drive Urban Area	Edgewater	678 sq m	Medium Priority Urban Landscaping
Greenshank Drive Public Access Way	Joondalup	487 sq m	Medium Priority Urban Landscaping
Lymburner Park	Hillarys	5,628 sq m	Medium Priority Urban Landscaping
Mamo Park	Greenwood	11,899 sq m	Medium Priority Urban Landscaping
Robertson Road Cycleway	Kingsley	44,837 sq m	Medium Priority Urban Landscaping
Sittella Turn Public Access Way	Joondalup	422 sq m	Medium Priority Urban Landscaping
Village Park	Ocean Reef	2,240 sq m	Medium Priority Urban Landscaping

Public open space	Suburb	Size	Sub-classification
Bage Park	Hillarys	690 sq m	Low Priority Urban Landscaping
Bannister Park	Padbury	1,506 sq m	Low Priority Urban Landscaping
Batavia Park	Kallaroo	3,644 sq m	Low Priority Urban Landscaping
Birdland Park	Edgewater	2,883 sq m	Low Priority Urban Landscaping
Carina Park	Ocean Reef	266 sq m	Low Priority Urban Landscaping
Cliverton Park	Marmion	268 sq m	Low Priority Urban Landscaping
Colac Park	Duncraig	2,624 sq m	Low Priority Urban Landscaping
Craigie Park	Craigie	1,240 sq m	Low Priority Urban Landscaping
Delaware Park	Kallaroo	4,693 sq m	Low Priority Urban Landscaping
Doveridge Park	Duncraig	1,822 sq m	Low Priority Urban Landscaping
Ellison Park	Padbury	1,875 sq m	Low Priority Urban Landscaping
Fenton Way Public Access Way	Hillarys	1,635 sq m	Low Priority Urban Landscaping
Glenunga Park	Craigie	517 sq m	Low Priority Urban Landscaping
Grand Ocean Entrance Park	Burns Beach	12,687 sq m	Low Priority Urban Landscaping
Grenfell Park	Duncraig	1,370 sq m	Low Priority Urban Landscaping
Hakea Park	Sorrento	1,051 sq m	Low Priority Urban Landscaping
Harcourt Park	Hillarys	2,179 sq m	Low Priority Urban Landscaping
Hawick Park (#1)	Warwick	721 sq m	Low Priority Urban Landscaping
Hawick Park (#2)	Warwick	479 sq m	Low Priority Urban Landscaping
Hawick Park Urban Area Public Access Way West	Warwick	410 sq m	Low Priority Urban Landscaping
Hawick Park Urban Area West	Warwick	1,468 sq m	Low Priority Urban Landscaping
Hughes Park	Padbury	1,135 sq m	Low Priority Urban Landscaping
Karuah Park	Greenwood	2,811 sq m	Low Priority Urban Landscaping
Killarney Park	Kallaroo	1,390 sq m	Low Priority Urban Landscaping
Kurrajong Park	Greenwood	12,563 sq m	Low Priority Urban Landscaping
Lakeview Park	Edgewater	755 sq m	Low Priority Urban Landscaping
Leichhardt Park Urban Area	Padbury	960 sq m	Low Priority Urban Landscaping
Macarthur Park	Padbury	3,134 sq m	Low Priority Urban Landscaping
Mackay Park	Hillarys	1,078 sq m	Low Priority Urban Landscaping
Mayflower Park	Craigie	1,381 sq m	Low Priority Urban Landscaping
McRae Park	Padbury	1,038 sq m	Low Priority Urban Landscaping
Minchin Thoroughfare	Padbury	7,178 sq m	Low Priority Urban Landscaping
Monkhouse Park	Hillarys	1,348 sq m	Low Priority Urban Landscaping
Mueller Park	Padbury	1,205 sq m	Low Priority Urban Landscaping
Nalpa Park	Duncraig	359 sq m	Low Priority Urban Landscaping
Nekaya Park	Duncraig	1,172 sq m	Low Priority Urban Landscaping
New Cross Park	Kingsley	900 sq m	Low Priority Urban Landscaping
Nimrod Park	Hillarys	1,573 sq m	Low Priority Urban Landscaping
Otway Park	Craigie	1,318 sq m	Low Priority Urban Landscaping
Oxley Park South	Padbury	1,632 sq m	Low Priority Urban Landscaping
Plover Park	Kingsley	2,672 sq m	Low Priority Urban Landscaping
Readshaw Park	Duncraig	763 sq m	Low Priority Urban Landscaping
Stillwater Park	Edgewater	2,016 sq m	Low Priority Urban Landscaping
Stow Park	Kinross	2,335 sq m	Low Priority Urban Landscaping
Strathaven Park	Greenwood	2,753 sq m	Low Priority Urban Landscaping
Third Park	Burns Beach	1,564 sq m	Low Priority Urban Landscaping
Warner Park	Greenwood	908 sq m	Low Priority Urban Landscaping
Whistler Park	Edgewater	2,380 sq m	Low Priority Urban Landscaping
Windich Park	Padbury	886 sq m	Low Priority Urban Landscaping
Woodland Park	Edgewater	904 sq m	Low Priority Urban Landscaping

**Natural Area**

Public open space	Suburb	Size	Sub-classification
Burns Beach Foreshore Reserve	Burns Beach	393,980 sq m	Major Conservation Natural Area
Craigie Open Space	Craigie	599,522 sq m	Major Conservation Natural Area
Hepburn Conservation Area	Padbury	221,808 sq m	Major Conservation Natural Area
Hillarys Foreshore Reserve	Hillarys	618,427 sq m	Major Conservation Natural Area
Iluka Foreshore Reserve	Iluka	362,177 sq m	Major Conservation Natural Area
Kallaroo Foreshore Reserve	Kallaroo	245,680 sq m	Major Conservation Natural Area
Lilburne Park	Duncraig	56,793 sq m	Major Conservation Natural Area
Marmion Foreshore Reserve	Marmion	46,795 sq m	Major Conservation Natural Area
Mullaloo Foreshore Bushland	Mullaloo	154,371 sq m	Major Conservation Natural Area
Ocean Reef Foreshore Reserve	Ocean Reef	1,079,299 sq m	Major Conservation Natural Area
Shepherds Bush Park (Natural Area)	Kingsley	160,655 sq m	Major Conservation Natural Area
Sorrento Foreshore Reserve	Sorrento	89,009 sq m	Major Conservation Natural Area
Warwick Open Space Bushland	Warwick	622,478 sq m	Major Conservation Natural Area
Beaumaris Park Natural Area	Ocean Reef	52,769 sq m	High Priority Natural Area
Blue Lake Park Natural Area	Joondalup	38,697 sq m	High Priority Natural Area
Bonnie Doon Park Natural Area	Connolly	10,749 sq m	High Priority Natural Area
Cadogan Park Natural Area	Kingsley	49,108 sq m	High Priority Natural Area
Carnaby Park	Connolly	21,733 sq m	High Priority Natural Area
Cawarra Park	Craigie	35,201 sq m	High Priority Natural Area
Central Park Natural Area	Joondalup	30,012 sq m	High Priority Natural Area
Chadlington Park Natural Area	Padbury	8,779 sq m	High Priority Natural Area
Clermont Park Natural Area	Currambine	15,855 sq m	High Priority Natural Area
Cranston Park	Kinross	28,054 sq m	High Priority Natural Area
Fairway Park Natural Area	Connolly	6,962 sq m	High Priority Natural Area
Glenbar Park	Duncraig	53,290 sq m	High Priority Natural Area
Kallaroo Park Natural Area	Mullaloo	27,703 sq m	High Priority Natural Area
Lady Evelyn Park Natural Area	Joondalup	7,003 sq m	High Priority Natural Area
Lakeside Park	Joondalup	31,344 sq m	High Priority Natural Area
Lakevalley Park Natural Area	Edgewater	14,505 sq m	High Priority Natural Area
Littorina Park Natural Area	Heathridge	32,328 sq m	High Priority Natural Area
MacNaughton Park Natural Area	Kinross	19,723 sq m	High Priority Natural Area
Maritana Park	Kallaroo	31,100 sq m	High Priority Natural Area
Nanika Park Natural Area	Joondalup	15,254 sq m	High Priority Natural Area
Naturaliste Park	Iluka	33,108 sq m	High Priority Natural Area
Neil Hawkins Park Natural Area	Joondalup	46,671 sq m	High Priority Natural Area
Periwinkle Park	Mullaloo	37,308 sq m	High Priority Natural Area
Porteous Park Natural Area	Sorrento	16,124 sq m	High Priority Natural Area
Quarry Park	Edgewater	138,108 sq m	High Priority Natural Area
Sandalford Park Natural Area	Beldon	7,908 sq m	High Priority Natural Area
Sir James McCusker Park Natural Area	Iluka	34,205 sq m	High Priority Natural Area
St Clair Park	Edgewater	35,693 sq m	High Priority Natural Area
St Michael's Park Natural Area	Connolly	7,816 sq m	High Priority Natural Area
Timberlane Park Natural Area	Woodvale	26,233 sq m	High Priority Natural Area
Trigonometric Park	Duncraig	26,249 sq m	High Priority Natural Area
Water Tower Park Natural Area	Joondalup	26,961 sq m	High Priority Natural Area



Public open space	Suburb	Size	Sub-classification
Adelaide Park Natural Area	Craigie	2,233 sq m	Medium Priority Natural Area
Alfreton Park Natural Area	Duncraig	18,997 sq m	Medium Priority Natural Area
Bethany Park	Iluka	7,068 sq m	Medium Priority Natural Area
Brisbane Park Natural Area	Padbury	1,512 sq m	Medium Priority Natural Area
Caledonia Park Natural Area	Currambine	22,582 sq m	Medium Priority Natural Area
Callander Park Natural Area	Kinross	10,483 sq m	Medium Priority Natural Area
Candlewood Park Natural Area	Joondalup	1,415 sq m	Medium Priority Natural Area
Castlecrag Park Natural Area	Kallaroo	4,558 sq m	Medium Priority Natural Area
Chichester Park Natural Area	Woodvale	22,976 sq m	Medium Priority Natural Area
Conidae Park Natural Area	Heathridge	4,836 sq m	Medium Priority Natural Area
Duncraig Library Natural Area	Duncraig	2,277 sq m	Medium Priority Natural Area
Earlsferry Park Natural Area	Kinross	7,764 sq m	Medium Priority Natural Area
Finney Park Natural Area	Marmion	6,818 sq m	Medium Priority Natural Area
Garrong Park	Edgewater	4,511 sq m	Medium Priority Natural Area
Greenshank Park Natural Area	Joondalup	2,795 sq m	Medium Priority Natural Area
Gunida Park Natural Area	Mullaloo	2,749 sq m	Medium Priority Natural Area
Harman Park Natural Area	Sorrento	4,185 sq m	Medium Priority Natural Area
Huntingdale Park Natural Area	Connolly	5,468 sq m	Medium Priority Natural Area
Huxley Park	Burns Beach	13,977 sq m	Medium Priority Natural Area
Korella Park Natural Area	Mullaloo	30,786 sq m	Medium Priority Natural Area
Kuta Park	Iluka	1,502 sq m	Medium Priority Natural Area
Lacepede Park Natural Area	Sorrento	5,630 sq m	Medium Priority Natural Area
Ledge Park	Sorrento	6,618 sq m	Medium Priority Natural Area
Lysander Park Natural Area	Heathridge	5,867 sq m	Medium Priority Natural Area
Madana Park	Craigie	15,191 sq m	Medium Priority Natural Area
Manapouri Park Natural Area	Joondalup	4,096 sq m	Medium Priority Natural Area
Mandalay Park	Craigie	17,630 sq m	Medium Priority Natural Area
Menteith Park Natural Area	Kinross	5,404 sq m	Medium Priority Natural Area
Negresco Park Natural Area	Currambine	2,700 sq m	Medium Priority Natural Area
Okely Park Natural Area	Edgewater	9,124 sq m	Medium Priority Natural Area
Picnic Cove Park Natural Area	Edgewater	9,862 sq m	Medium Priority Natural Area
Pine Valley Park	Connolly	21,970 sq m	Medium Priority Natural Area
Quarry Ramble Bushland	Edgewater	18,735 sq m	Medium Priority Natural Area
Robin Park Natural Area	Sorrento	6,914 sq m	Medium Priority Natural Area
Trig Point Park Natural Area	Ocean Reef	9,049 sq m	Medium Priority Natural Area
Warrandyte Park Natural Area	Craigie	11,514 sq m	Medium Priority Natural Area
Bramston Park Natural Area	Burns Beach	1,703 sq m	Low Priority Natural Area
Christchurch Park Natural Area	Currambine	1,847 sq m	Low Priority Natural Area
Culwalla Park Natural Area	Kallaroo	1,301 sq m	Low Priority Natural Area
Delamere Park Natural Area	Currambine	3,790 sq m	Low Priority Natural Area
Fernwood Park Natural Area	Padbury	3,225 sq m	Low Priority Natural Area
Haddington Park Natural Area	Beldon	2,811 sq m	Low Priority Natural Area
Hawker Park Natural Area	Warwick	12,071 sq m	Low Priority Natural Area
Hilton Park Natural Area	Duncraig	1,048 sq m	Low Priority Natural Area
Kiernan Park Natural Area	Kallaroo	9,332 sq m	Low Priority Natural Area
Kilrenny Park Natural Area	Greenwood	4,487 sq m	Low Priority Natural Area
Lookout Park	Edgewater	4,729 sq m	Low Priority Natural Area
Magpie Reserve	Marmion	2,898 sq m	Low Priority Natural Area
Pentland Park Natural Area	Duncraig	843 sq m	Low Priority Natural Area
Riversdale Park Natural Area	Currambine	5,429 sq m	Low Priority Natural Area
Stilt Park Natural Area	Joondalup	2,326 sq m	Low Priority Natural Area
Sweeney Park Natural Area	Padbury	1,815 sq m	Low Priority Natural Area
Walsh Park Natural Area	Joondalup	1,355 sq m	Low Priority Natural Area

**A–Z List**

<b>Public open space</b>	<b>Classification</b>	<b>Sub-classification</b>
Aberdare Park	Recreation Park	Local Recreation Park
Abrolhos Park	Recreation Park	Local Recreation Park
Adelaide Park	Recreation Park	Local Recreation Park
Adelaide Park Natural Area	Natural Area	Medium Priority Natural Area
Admiral Park	Sports Park	Neighbourhood Sports Park
Albacore Park	Recreation Park	Local Recreation Park
Albion Park	Recreation Park	Local Recreation Park
Albright Park	Recreation Park	Local Recreation Park
Alder Park	Recreation Park	Local Recreation Park
Aldgate Park	Recreation Park	Local Recreation Park
Alfreton Park	Recreation Park	Local Recreation Park
Alfreton Park Natural Area	Natural Area	Medium Priority Natural Area
Alidade Park	Recreation Park	Local Recreation Park
Anemone Park	Recreation Park	Local Recreation Park
Annato Park	Recreation Park	Neighbourhood Recreation Park
Aristride Park	Recreation Park	Neighbourhood Recreation Park
Atma Park	Recreation Park	Neighbourhood Recreation Park
Bage Park	Urban Landscaping	Low Priority Urban Landscaping
Balanus Park	Recreation Park	Local Recreation Park
Baltusrol Park	Recreation Park	Neighbourhood Recreation Park
Banks Park	Recreation Park	Local Recreation Park
Banksia Park	Recreation Park	Local Recreation Park
Bannister Park	Urban Landscaping	Low Priority Urban Landscaping
Barclay Park	Recreation Park	Local Recreation Park
Barridale Park	Sports Park	Neighbourhood Sports Park
Barwon Park	Recreation Park	Local Recreation Park
Batavia Park	Urban Landscaping	Low Priority Urban Landscaping
Beachside Park	Recreation Park	Neighbourhood Recreation Park
Beaumaris Park	Recreation Park	Neighbourhood Recreation Park
Beaumaris Park Natural Area	Natural Area	High Priority Natural Area
Beaumont Park	Recreation Park	Neighbourhood Recreation Park
Beldon Park	Sports Park	Neighbourhood Sports Park
Belrose Park	Sports Park	Local Sports Park
Bengello Park	Recreation Park	Neighbourhood Recreation Park
Bethany Park	Natural Area	Medium Priority Natural Area
Bigola Park	Urban Landscaping	Medium Priority Urban Landscaping
Birch Park	Recreation Park	Local Recreation Park
Birdland Park	Urban Landscaping	Low Priority Urban Landscaping
Blackall Park	Sports Park	Neighbourhood Sports Park
Blackboy Park	Recreation Park	District Recreation Park
Blackpool Park	Recreation Park	Neighbourhood Recreation Park
Blackthorn Park	Recreation Park	Neighbourhood Recreation Park
Blue Lake Park	Recreation Park	Local Recreation Park
Blue Lake Park Natural Area	Natural Area	High Priority Natural Area
Bonnie Doon Park	Recreation Park	Neighbourhood Recreation Park
Bonnie Doon Park Natural Area	Natural Area	High Priority Natural Area
Bracken Park	Recreation Park	Local Recreation Park
Braden Park	Recreation Park	District Recreation Park
Bramston Park	Sports Park	Neighbourhood Sports Park
Bramston Park Natural Area	Natural Area	Low Priority Natural Area
Brazier Park	Recreation Park	Local Recreation Park

Public open space	Classification	Sub-classification
Bridgewater Park	Sports Park	Neighbourhood Sports Park
Brisbane Park	Recreation Park	Local Recreation Park
Brisbane Park Natural Area	Natural Area	Medium Priority Natural Area
Broadbeach Park	Recreation Park	Neighbourhood Recreation Park
Buckthorn Park	Recreation Park	Local Recreation Park
Burns Beach Foreshore Reserve	Natural Area	Major Conservation Natural Area
Burns Beach Park	Recreation Park	Regional Recreation Park
Burns Park	Urban Landscaping	Medium Priority Urban Landscaping
Byrne Park	Recreation Park	Local Recreation Park
Cadogan Park	Recreation Park	Local Recreation Park
Cadogan Park Natural Area	Natural Area	High Priority Natural Area
Calectasia Park	Recreation Park	Local Recreation Park
Caledonia Park	Sports Park	Neighbourhood Sports Park
Caledonia Park Natural Area	Natural Area	Medium Priority Natural Area
Callander Park	Sports Park	Local Sports Park
Callander Park Natural Area	Natural Area	Medium Priority Natural Area
Callion Park	Recreation Park	Local Recreation Park
Calthorpe Park	Recreation Park	Local Recreation Park
Camberwarra Park	Recreation Park	District Recreation Park
Candlewood Park	Recreation Park	Neighbourhood Recreation Park
Candlewood Park Natural Area	Natural Area	Medium Priority Natural Area
Captain Park	Recreation Park	Local Recreation Park
Carina Park	Urban Landscaping	Low Priority Urban Landscaping
Carlton Park	Sports Park	Neighbourhood Sports Park
Carnaby Park	Natural Area	High Priority Natural Area
Carr Park	Recreation Park	Local Recreation Park
Castlecrag Park	Recreation Park	Neighbourhood Recreation Park
Castlecrag Park Natural Area	Natural Area	Medium Priority Natural Area
Castlefern Park	Recreation Park	Local Recreation Park
Cawarra Park	Natural Area	High Priority Natural Area
Central Park	Recreation Park	Regional Recreation Park
Central Park Natural Area	Natural Area	High Priority Natural Area
Chadlington Park Natural Area	Natural Area	High Priority Natural Area
Chadstone Park	Recreation Park	Neighbourhood Recreation Park
Charing Cross Park	Recreation Park	Neighbourhood Recreation Park
Charonia Park	Sports Park	Neighbourhood Sports Park
Chelsea Park	Recreation Park	Local Recreation Park
Chelsford Park	Recreation Park	Local Recreation Park
Chichester Park	Sports Park	District Sports Park
Chichester Park Natural Area	Natural Area	Medium Priority Natural Area
Christchurch Park	Sports Park	Neighbourhood Sports Park
Christchurch Park Natural Area	Natural Area	Low Priority Natural Area
Churton Park	Recreation Park	Neighbourhood Recreation Park
Cinque Ports Park	Recreation Park	Local Recreation Park
Circle Park	Recreation Park	Local Recreation Park
Clare Park	Recreation Park	Local Recreation Park
Clermont Park	Recreation Park	Neighbourhood Recreation Park
Clermont Park Natural Area	Natural Area	High Priority Natural Area
Cliff Park	Recreation Park	Local Recreation Park
Clifford Coleman Park	Recreation Park	Local Recreation Park

Public open space	Classification	Sub-classification
Cliverton Park	Urban Landscaping	Low Priority Urban Landscaping
Cockman Park	Recreation Park	District Recreation Park
Colac Park	Urban Landscaping	Low Priority Urban Landscaping
Conica Park	Recreation Park	Local Recreation Park
Conidae Park	Recreation Park	Local Recreation Park
Conidae Park Natural Area	Natural Area	Medium Priority Natural Area
Coolibah Park	Recreation Park	Neighbourhood Recreation Park
Cornish Park	Recreation Park	Local Recreation Park
Craigie Open Space	Natural Area	Major Conservation Natural Area
Craigie Park	Urban Landscaping	Low Priority Urban Landscaping
Cranston Park	Natural Area	High Priority Natural Area
Culwalla Park	Recreation Park	Local Recreation Park
Culwalla Park Natural Area	Natural Area	Low Priority Natural Area
Cumberland Park	Recreation Park	Local Recreation Park
Cunningham Park	Recreation Park	Local Recreation Park
Dampier Park	Recreation Park	District Recreation Park
Dandjoo Park	Recreation Park	Local Recreation Park
Dardanus Park	Recreation Park	Local Recreation Park
De Crillon Park	Recreation Park	Neighbourhood Recreation Park
Delamere Park	Recreation Park	District Recreation Park
Delamere Park Natural Area	Natural Area	Low Priority Natural Area
Delaware Park	Urban Landscaping	Low Priority Urban Landscaping
Delonix Park	Recreation Park	Local Recreation Park
Discovery Park	Recreation Park	Neighbourhood Recreation Park
Dollis Park	Recreation Park	Local Recreation Park
Doncaster Park	Recreation Park	Local Recreation Park
Doveridge Park	Urban Landscaping	Low Priority Urban Landscaping
Duncraig Library Natural Area	Natural Area	Medium Priority Natural Area
Earlsferry Park	Recreation Park	Local Recreation Park
Earlsferry Park Natural Area	Natural Area	Medium Priority Natural Area
Edgewater Drive Urban Area	Urban Landscaping	Medium Priority Urban Landscaping
Edgewater Park	Recreation Park	Local Recreation Park
Elcar Park	Recreation Park	Neighbourhood Recreation Park
Ellersdale Park	Sports Park	Neighbourhood Sports Park
Ellison Park	Urban Landscaping	Low Priority Urban Landscaping
Embankment Park	Recreation Park	Local Recreation Park
Emerald Park	Sports Park	Neighbourhood Sports Park
Ensign Park	Recreation Park	Local Recreation Park
Fairmont Park	Recreation Park	Local Recreation Park
Fairway Park	Recreation Park	Neighbourhood Recreation Park
Fairway Park Natural Area	Natural Area	High Priority Natural Area
Falkland Park	Sports Park	Neighbourhood Sports Park
Faversham Park	Recreation Park	Local Recreation Park
Fenton Park	Recreation Park	Neighbourhood Recreation Park
Fenton Way Public Access Way	Urban Landscaping	Low Priority Urban Landscaping
Fernwood Park	Recreation Park	Neighbourhood Recreation Park
Fernwood Park Natural Area	Natural Area	Low Priority Natural Area
Filbert Park	Recreation Park	Local Recreation Park
Finney Park	Recreation Park	Local Recreation Park
Finney Park Natural Area	Natural Area	Medium Priority Natural Area
Flinders Park	Sports Park	Neighbourhood Sports Park
Forest Hill Park East	Recreation Park	Local Recreation Park
Forest Hill Park West	Recreation Park	Local Recreation Park



Public open space	Classification	Sub-classification
Forrest Park	Sports Park	Neighbourhood Sports Park
Fraser Park	Recreation Park	Local Recreation Park
Galston Park	Recreation Park	Neighbourhood Recreation Park
Garrong Park	Natural Area	Medium Priority Natural Area
Gascoyne Park	Recreation Park	Neighbourhood Recreation Park
Geddes Park	Recreation Park	Local Recreation Park
Geneff Park	Recreation Park	Neighbourhood Recreation Park
George Sears Park	Recreation Park	Local Recreation Park
Gerda Park	Recreation Park	Local Recreation Park
Gibson Park	Recreation Park	Neighbourhood Recreation Park
Gleddon Park	Recreation Park	Local Recreation Park
Glenbank Park	Recreation Park	Neighbourhood Recreation Park
Glenbar Park	Natural Area	High Priority Natural Area
Glengarry Park	Sports Park	Neighbourhood Sports Park
Glenmere Park	Recreation Park	Neighbourhood Recreation Park
Glenunga Park	Urban Landscaping	Low Priority Urban Landscaping
Gradient Park	Recreation Park	Neighbourhood Recreation Park
Granadilla Park	Recreation Park	Neighbourhood Recreation Park
Grand Ocean Entrance Park	Urban Landscaping	Low Priority Urban Landscaping
Grand Ocean Park	Recreation Park	Neighbourhood Recreation Park
Greenlaw Park	Recreation Park	Local Recreation Park
Greenshank Drive Public Access Way	Urban Landscaping	Medium Priority Urban Landscaping
Greenshank Park	Recreation Park	Local Recreation Park
Greenshank Park Natural Area	Natural Area	Medium Priority Natural Area
Greenwich Park	Recreation Park	Neighbourhood Recreation Park
Grenfell Park	Urban Landscaping	Low Priority Urban Landscaping
Gunida Park	Recreation Park	Local Recreation Park
Gunida Park Natural Area	Natural Area	Medium Priority Natural Area
Haddington Park	Recreation Park	District Recreation Park
Haddington Park Natural Area	Natural Area	Low Priority Natural Area
Hakea Park	Urban Landscaping	Low Priority Urban Landscaping
Harbour View Park	Recreation Park	Neighbourhood Recreation Park
Harcourt Park	Urban Landscaping	Low Priority Urban Landscaping
Harman Park	Recreation Park	Local Recreation Park
Harman Park Natural Area	Natural Area	Medium Priority Natural Area
Hartley Park	Recreation Park	Neighbourhood Recreation Park
Hawick Park (#1)	Urban Landscaping	Low Priority Urban Landscaping
Hawick Park (#2)	Urban Landscaping	Low Priority Urban Landscaping
Hawick Park Urban Area Public Access Way West	Urban Landscaping	Low Priority Urban Landscaping
Hawick Park Urban Area West	Urban Landscaping	Low Priority Urban Landscaping
Hawker Park	Sports Park	Neighbourhood Sports Park
Hawker Park Natural Area	Natural Area	Low Priority Natural Area
Heathridge Park	Sports Park	District Sports Park
Hepburn Conservation Area	Natural Area	Major Conservation Natural Area
Herreshoff Park	Recreation Park	Local Recreation Park
Hillarys Beach Park	Recreation Park	Regional Recreation Park
Hillarys Foreshore Reserve	Natural Area	Major Conservation Natural Area
Hillarys Park	Sports Park	Neighbourhood Sports Park
Hilltop Park	Recreation Park	Local Recreation Park
Hillwood Park (North)	Recreation Park	Neighbourhood Recreation Park
Hillwood Park (South)	Recreation Park	Local Recreation Park

Public open space	Classification	Sub-classification
Hilton Park	Recreation Park	Neighbourhood Recreation Park
Hilton Park Natural Area	Natural Area	Low Priority Natural Area
Hughes Park	Urban Landscaping	Low Priority Urban Landscaping
Huntingdale Park	Recreation Park	Neighbourhood Recreation Park
Huntingdale Park Natural Area	Natural Area	Medium Priority Natural Area
Huxley Park	Natural Area	Medium Priority Natural Area
Illawong Park	Recreation Park	Neighbourhood Recreation Park
Iluka Beach Park	Recreation Park	District Recreation Park
Iluka District Open Space	Sports Park	District Sports Park
Iluka Foreshore Reserve	Natural Area	Major Conservation Natural Area
James Cook Park	Sports Park	District Sports Park
Juniper Park	Sports Park	Neighbourhood Sports Park
Kallaroo Foreshore Reserve	Natural Area	Major Conservation Natural Area
Kallaroo Park	Recreation Park	Local Recreation Park
Kallaroo Park Natural Area	Natural Area	High Priority Natural Area
Kanangra Park	Recreation Park	Neighbourhood Recreation Park
Karuah Park	Urban Landscaping	Low Priority Urban Landscaping
Katrine Park	Recreation Park	Local Recreation Park
Kelvin Park	Recreation Park	Local Recreation Park
Keppell Park	Recreation Park	Local Recreation Park
Kiernan Park	Recreation Park	Neighbourhood Recreation Park
Kiernan Park Natural Area	Natural Area	Low Priority Natural Area
Killarney Park	Urban Landscaping	Low Priority Urban Landscaping
Killen Park	Recreation Park	Neighbourhood Recreation Park
Kilrenny Park	Recreation Park	Local Recreation Park
Kilrenny Park Natural Area	Natural Area	Low Priority Natural Area
Kimberley Park	Recreation Park	Local Recreation Park
Kingfisher Park	Recreation Park	Local Recreation Park
Kingsley Park	Sports Park	District Sports Park
Korella Park	Sports Park	Neighbourhood Sports Park
Korella Park Natural Area	Natural Area	Medium Priority Natural Area
Kurrajong Park	Urban Landscaping	Low Priority Urban Landscaping
Kuta Park	Natural Area	Medium Priority Natural Area
Lacepede Park	Recreation Park	Neighbourhood Recreation Park
Lacepede Park Natural Area	Natural Area	Medium Priority Natural Area
Lady Evelyn Park	Recreation Park	Neighbourhood Recreation Park
Lady Evelyn Park Natural Area	Natural Area	High Priority Natural Area
Lakeside Park	Natural Area	High Priority Natural Area
Lakevalley Park	Recreation Park	Neighbourhood Recreation Park
Lakevalley Park Natural Area	Natural Area	High Priority Natural Area
Lakeview Park	Urban Landscaping	Low Priority Urban Landscaping
Lanark Park	Recreation Park	Local Recreation Park
Larkspur Park	Recreation Park	Local Recreation Park
Leaside Park	Recreation Park	Local Recreation Park
Ledge Park	Natural Area	Medium Priority Natural Area
Leeward Park	Recreation Park	Local Recreation Park
Legana Park	Recreation Park	Neighbourhood Recreation Park
Lehmann Park	Recreation Park	Local Recreation Park
Leichhardt Park	Recreation Park	Neighbourhood Recreation Park
Leichhardt Park Urban Area	Urban Landscaping	Low Priority Urban Landscaping
Lexcen Park	Sports Park	Neighbourhood Sports Park
Lilburne Park	Natural Area	Major Conservation Natural Area

Public open space	Classification	Sub-classification
Littorina Park	Sports Park	Neighbourhood Sports Park
Littorina Park Natural Area	Natural Area	High Priority Natural Area
Lookout Park	Natural Area	Low Priority Natural Area
Lymburner Park	Urban Landscaping	Medium Priority Urban Landscaping
Lysander Park	Recreation Park	Local Recreation Park
Lysander Park Natural Area	Natural Area	Medium Priority Natural Area
Macarthur Park	Urban Landscaping	Low Priority Urban Landscaping
Macaulay Park	Recreation Park	Local Recreation Park
Macdonald Park	Sports Park	District Sports Park
Mackay Park	Urban Landscaping	Low Priority Urban Landscaping
MacNaughton Park	Sports Park	Neighbourhood Sports Park
MacNaughton Park Natural Area	Natural Area	High Priority Natural Area
Madana Park	Natural Area	Medium Priority Natural Area
Magpie Reserve	Natural Area	Low Priority Natural Area
Mamo Park	Urban Landscaping	Medium Priority Urban Landscaping
Manapouri Park	Recreation Park	Neighbourhood Recreation Park
Manapouri Park Natural Area	Natural Area	Medium Priority Natural Area
Mandalay Park	Natural Area	Medium Priority Natural Area
Maquire Park	Recreation Park	Neighbourhood Recreation Park
Marbella Park	Recreation Park	Local Recreation Park
Marbella Park Natural Area	Recreation Park	Local Recreation Park
Maritana Park	Natural Area	High Priority Natural Area
Marmion Foreshore Reserve	Natural Area	Major Conservation Natural Area
Marri Park	Sports Park	District Sports Park
Mawson Park	Recreation Park	District Recreation Park
Mayflower Park	Urban Landscaping	Low Priority Urban Landscaping
Mccubbin Park	Recreation Park	Local Recreation Park
McIntyre Park	Recreation Park	Neighbourhood Recreation Park
Mckinlay Park	Recreation Park	Local Recreation Park
McKirdy Park	Recreation Park	Local Recreation Park
McRae Park	Urban Landscaping	Low Priority Urban Landscaping
Melene Park	Sports Park	Neighbourhood Sports Park
Menteith Park	Recreation Park	Neighbourhood Recreation Park
Menteith Park Natural Area	Natural Area	Medium Priority Natural Area
Merrifield Park	Recreation Park	Local Recreation Park
Minchin Thoroughfare	Urban Landscaping	Low Priority Urban Landscaping
Mirror Park	Sports Park	Neighbourhood Sports Park
Monkhouse Park	Urban Landscaping	Low Priority Urban Landscaping
Montague Park	Recreation Park	Neighbourhood Recreation Park
Monument Park	Recreation Park	Local Recreation Park
Moolanda Park	Sports Park	Neighbourhood Sports Park
Mueller Park	Urban Landscaping	Low Priority Urban Landscaping
Mullaloo Foreshore Bushland	Natural Area	Major Conservation Natural Area
Nalpa Park	Urban Landscaping	Low Priority Urban Landscaping
Nanika Park	Recreation Park	Neighbourhood Recreation Park
Nanika Park Natural Area	Natural Area	High Priority Natural Area
Nash Park	Recreation Park	Local Recreation Park
Naturaliste Park	Natural Area	High Priority Natural Area
Negresco Park	Recreation Park	Local Recreation Park
Negresco Park Natural Area	Natural Area	Medium Priority Natural Area
Neil Hawkins Park	Recreation Park	Regional Recreation Park
Neil Hawkins Park Natural Area	Natural Area	High Priority Natural Area

Public open space	Classification	Sub-classification
Nekaya Park	Urban Landscaping	Low Priority Urban Landscaping
New Cross Park	Urban Landscaping	Low Priority Urban Landscaping
Newcombe Park	Recreation Park	Neighbourhood Recreation Park
Newham Park	Recreation Park	Neighbourhood Recreation Park
Nimrod Park	Urban Landscaping	Low Priority Urban Landscaping
Ninnis Park	Recreation Park	Local Recreation Park
Noal Gannon Park	Recreation Park	Neighbourhood Recreation Park
Oahu Park	Recreation Park	Neighbourhood Recreation Park
Oakapple Park	Recreation Park	Local Recreation Park
Ocean Reef Beach Park	Recreation Park	Neighbourhood Recreation Park
Ocean Reef Foreshore Reserve	Natural Area	Major Conservation Natural Area
Ocean Reef Park	Sports Park	Neighbourhood Sports Park
Okely Park Natural Area	Natural Area	Medium Priority Natural Area
Oleaster Park	Recreation Park	Neighbourhood Recreation Park
Orient Park	Recreation Park	Local Recreation Park
Otago Park	Sports Park	Neighbourhood Sports Park
Otway Park	Urban Landscaping	Low Priority Urban Landscaping
Oxley Park Central	Recreation Park	Local Recreation Park
Oxley Park North	Recreation Park	Local Recreation Park
Oxley Park South	Urban Landscaping	Low Priority Urban Landscaping
Parin Park	Recreation Park	Neighbourhood Recreation Park
Parkinson Park	Recreation Park	Local Recreation Park
Parkside Park	Sports Park	Local Sports Park
Paterson Park	Recreation Park	Local Recreation Park
Pattaya Park	Recreation Park	Neighbourhood Recreation Park
Paveta Park	Recreation Park	Local Recreation Park
Penistone Park	Sports Park	District Sports Park
Pentland Park	Recreation Park	Local Recreation Park
Pentland Park Natural Area	Natural Area	Low Priority Natural Area
Percy Doyle Reserve	Sports Park	Regional Sports Park
Periwinkle Park	Natural Area	High Priority Natural Area
Piccadilly Park	Recreation Park	Local Recreation Park
Picnic Cove Park	Recreation Park	District Recreation Park
Picnic Cove Park Natural Area	Natural Area	Medium Priority Natural Area
Pine Valley Park	Natural Area	Medium Priority Natural Area
Pinnacle Park	Recreation Park	Neighbourhood Recreation Park
Pinnaroo Point Beach Park	Recreation Park	District Recreation Park
Plover Park	Urban Landscaping	Low Priority Urban Landscaping
Plumdale Park	Recreation Park	Neighbourhood Recreation Park
Porteous Park	Recreation Park	Local Recreation Park
Porteous Park Natural Area	Natural Area	High Priority Natural Area
Portree Park	Recreation Park	Local Recreation Park
Portwood Park	Recreation Park	Local Recreation Park
Poseidon Park	Recreation Park	Neighbourhood Recreation Park
Poynter Park	Recreation Park	Local Recreation Park
Prince Regent Park	Sports Park	Neighbourhood Sports Park
Quarry Park	Natural Area	High Priority Natural Area
Quarry Ramble Bushland	Natural Area	Medium Priority Natural Area
Quarry Ramble Park	Recreation Park	Neighbourhood Recreation Park
Queensbury Park	Recreation Park	Local Recreation Park
Ranford Park	Recreation Park	Local Recreation Park
Readshaw Park	Urban Landscaping	Low Priority Urban Landscaping
Regents Park	Recreation Park	Neighbourhood Recreation Park



Public open space	Classification	Sub-classification
Rev John Smithies Park	Recreation Park	Local Recreation Park
Revitalise Park	Recreation Park	Neighbourhood Recreation Park
Ridge Park	Recreation Park	Local Recreation Park
Riversdale Park	Recreation Park	Local Recreation Park
Riversdale Park Natural Area	Natural Area	Low Priority Natural Area
Robertson Road Cycleway	Urban Landscaping	Medium Priority Urban Landscaping
Robin Park	Sports Park	Neighbourhood Sports Park
Robin Park Natural Area	Natural Area	Medium Priority Natural Area
Rodgers Park	Recreation Park	Local Recreation Park
Roxburgh Park	Recreation Park	Local Recreation Park
Rutherglen Park	Recreation Park	Local Recreation Park
Salata Park	Recreation Park	Local Recreation Park
Sandalford Park	Recreation Park	Neighbourhood Recreation Park
Sandalford Park Natural Area	Natural Area	High Priority Natural Area
Sanday Park	Recreation Park	Local Recreation Park
Santa Ana Park	Recreation Park	Neighbourhood Recreation Park
Santiago Park	Sports Park	Neighbourhood Sports Park
Scott Park	Recreation Park	Local Recreation Park
Seacrest Park	Sports Park	District Sports Park
Sheoak Park	Recreation Park	Neighbourhood Recreation Park
Shepherds Bush Park	Recreation Park	District Recreation Park
Shepherds Bush Park (Natural Area)	Natural Area	Major Conservation Natural Area
Sherington Park	Recreation Park	Local Recreation Park
Simpson Park	Recreation Park	Neighbourhood Recreation Park
Sir James McCusker Park	Recreation Park	District Recreation Park
Sir James McCusker Park Natural Area	Natural Area	High Priority Natural Area
Sittella Park East	Recreation Park	Local Recreation Park
Sittella Turn Public Access Way	Urban Landscaping	Medium Priority Urban Landscaping
Sorrento Beach Park	Recreation Park	Regional Recreation Park
Sorrento Foreshore Reserve	Natural Area	Major Conservation Natural Area
Southern Cross Park	Recreation Park	Neighbourhood Recreation Park
Southport Park	Recreation Park	Local Recreation Park
Spoonbill Park	Recreation Park	Local Recreation Park
Springvale Park	Recreation Park	Local Recreation Park
St Clair Park	Natural Area	High Priority Natural Area
St Michael's Park	Recreation Park	Local Recreation Park
St Michael's Park Natural Area	Natural Area	High Priority Natural Area
Stanford Park	Recreation Park	Local Recreation Park
Stillwater Park	Urban Landscaping	Low Priority Urban Landscaping
Stilt Park	Recreation Park	Local Recreation Park
Stilt Park Natural Area	Natural Area	Low Priority Natural Area
Stonehaven Park	Recreation Park	Local Recreation Park
Stow Park	Urban Landscaping	Low Priority Urban Landscaping
Strathaven Park	Urban Landscaping	Low Priority Urban Landscaping
Sweeney Park	Recreation Park	Local Recreation Park
Sweeney Park Natural Area	Natural Area	Low Priority Natural Area
Sycamore Park	Recreation Park	Local Recreation Park
Talbot Park	Recreation Park	Local Recreation Park
Talbot Park Natural Area	Recreation Park	Local Recreation Park
Tarolinta Park	Recreation Park	Neighbourhood Recreation Park

Public open space	Classification	Sub-classification
Telopia Park	Recreation Park	Local Recreation Park
Third Park	Urban Landscaping	Low Priority Urban Landscaping
Thornbill Park	Recreation Park	Local Recreation Park
Thornton Park	Recreation Park	Local Recreation Park
Timbercrest Park	Recreation Park	Local Recreation Park
Timberlane Park	Sports Park	District Sports Park
Timberlane Park Natural Area	Natural Area	High Priority Natural Area
Tom Simpson Park	Recreation Park	Regional Recreation Park
Tom Walker Park	Recreation Park	Neighbourhood Recreation Park
Toowoon Park	Recreation Park	Local Recreation Park
Trailwood Park	Recreation Park	Local Recreation Park
Trappers Park	Recreation Park	Neighbourhood Recreation Park
Trig Point Park	Recreation Park	Local Recreation Park
Trig Point Park Natural Area	Natural Area	Medium Priority Natural Area
Trigonometric Park	Natural Area	High Priority Natural Area
Triton Park	Recreation Park	Neighbourhood Recreation Park
Tuart Park	Recreation Park	Local Recreation Park
Village Park	Urban Landscaping	Medium Priority Urban Landscaping
Wallangarra Park	Recreation Park	Neighbourhood Recreation Park
Walsh Park	Recreation Park	Local Recreation Park
Walsh Park Natural Area	Natural Area	Low Priority Natural Area
Waltham Park	Recreation Park	Local Recreation Park
Wanbrow Park	Recreation Park	Local Recreation Park
Wandina Park	Recreation Park	Local Recreation Park
Warner Park	Urban Landscaping	Low Priority Urban Landscaping
Warrandyte Park	Sports Park	District Sports Park
Warrandyte Park Natural Area	Natural Area	Medium Priority Natural Area
Warrigal Park	Sports Park	Neighbourhood Sports Park
Warwick Open Space	Sports Park	Regional Sports Park
Warwick Open Space Bushland	Natural Area	Major Conservation Natural Area
Water Tower Park	Recreation Park	Local Recreation Park
Water Tower Park Natural Area	Natural Area	High Priority Natural Area
Waterview Park	Recreation Park	Local Recreation Park
Wedgewood Park	Recreation Park	Local Recreation Park
Wentworth Park	Recreation Park	Neighbourhood Recreation Park
Wesley Park	Recreation Park	Local Recreation Park
Whistler Park	Urban Landscaping	Low Priority Urban Landscaping
Whitfords East Park	Recreation Park	Neighbourhood Recreation Park
Whitfords West Park	Recreation Park	District Recreation Park
Windermere Park	Sports Park	Neighbourhood Sports Park
Windich Park	Urban Landscaping	Low Priority Urban Landscaping
Windmill Park	Recreation Park	Local Recreation Park
Wolinski Park	Recreation Park	Neighbourhood Recreation Park
Woodland Park	Urban Landscaping	Low Priority Urban Landscaping
Woodlea Park	Recreation Park	Local Recreation Park