

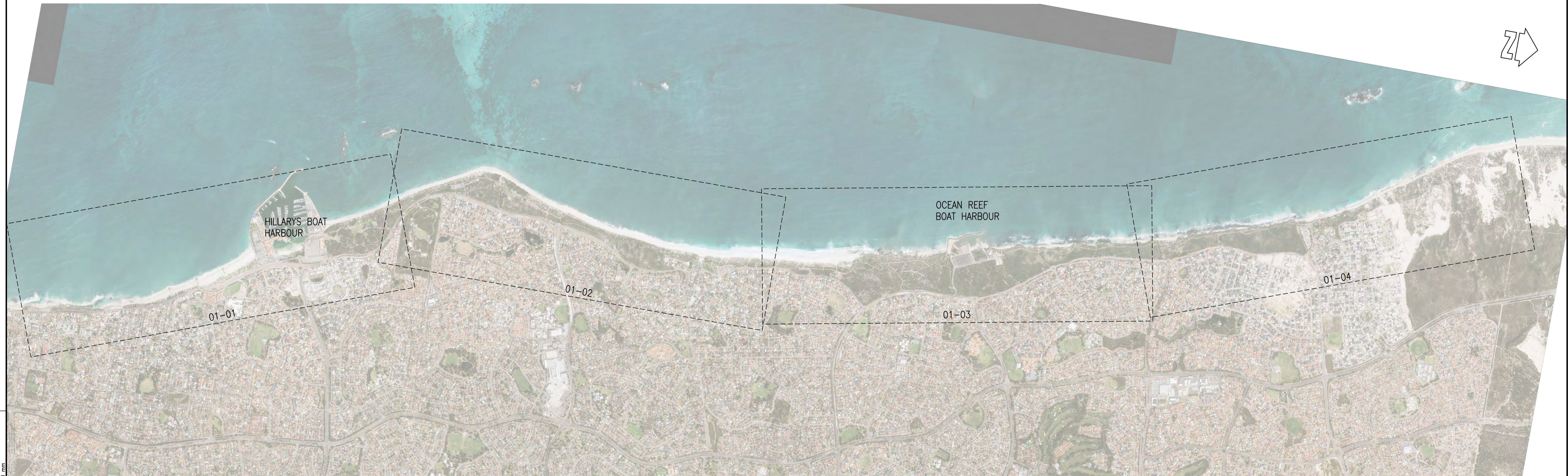
Appendix B Coastal Hazard Maps

CITY OF JOONDALUP

COASTAL HAZARD ASSESSMENT

COASTAL HAZARD MAPS

DRAWING No.	TITLE
D1331-01-01	MARMION TO WHITFORDS NODES
D1331-01-02	WHITFORDS NODES TO MULLALOO
D1331-01-03	OCEAN REEF
D1331-01-04	ILUKA TO BURNS BEACH



AT CORRECT SCALE THIS IS 100 mm

CAD: D13310100B

				<p>COPYRIGHT</p> <p>The concepts and information contained in this document are the Copyright of m p rogers & associates. Use or copying of the document in whole or part without the written permission of m p rogers & associates constitutes an infringement of copyright.</p>				<p>CLIENT CITY OF JOONDALUP</p>				<p>m p rogers & associates pl coastal and port engineers</p> <p>Suite 1, 128 Main Street Osborne Park 6017 Western Australia</p> <p>t: +61 8 9254 6600 f: +61 8 9254 6699 admin@coastsandports.com.au</p>				<p>PROJECT JOONDALUP COASTAL HAZARD ASSESSMENT</p>			
<p>B 15.06.16 TSH MINOR UPDATES & REISSUED</p>				<p>This plan is not to be used for construction unless issued as Rev 0 and signed below</p>				<p>DESIGNED T. HUNT</p>				<p>TITLE COASTAL HAZARD MAPS DRAWING LIST & SHEET LAYOUT</p>							
<p>A 20.05.16 TVB PRELIMINARY ISSUE</p>								<p>CHECKED T. HUNT</p>				<p>SCALE AT A1 NTS</p>							
<p>REV DATE APPROVED AMENDMENT</p>				<p>REV DATE APPROVED AMENDMENT</p>				<p>DRAWN T. VAN BEEM</p>				<p>DRAWING NUMBER D1331-01-00</p>							
												<p>REV B</p>							



LEGEND:

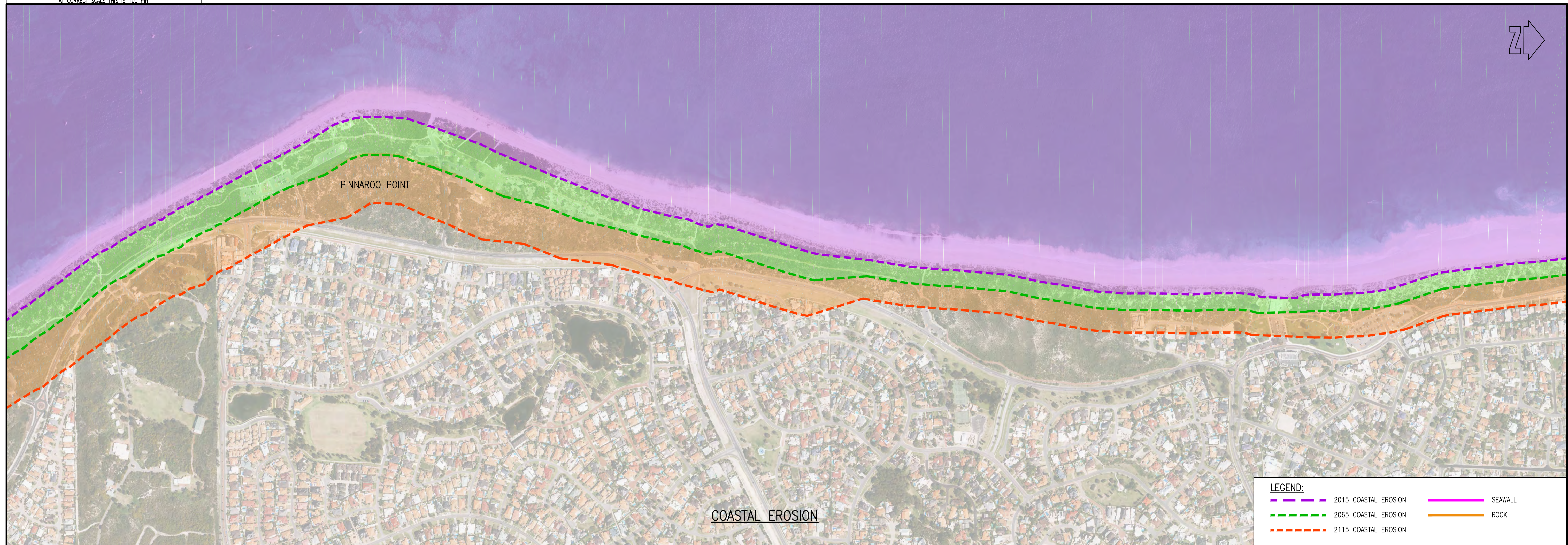
	2015 COASTAL EROSION		SEAWALL
	2065 COASTAL EROSION		ROCK
	2115 COASTAL EROSION		



- NOTES:**
1. AERIAL PHOTOGRAPH TAKEN SEPTEMBER 2015, SUPPLIED BY CITY OF JOONDALUP.
 2. INUNDATION EXTENTS BASED ON 5m GRIDDED LIDAR DATA SUPPLIED BY DOT. SURVEY COMPLETED 2009.
 3. EXPOSED ROCK FROM DOT (2005) & GEOTECH INVESTIGATION (2015).
 4. SEAWALL LOCATIONS FROM DOT (2005).
 5. TO BE READ IN CONJUNCTION WITH MRA REPORT R771.
 6. ROCK SHORELINES AND SEAWALLS WILL NEED TO BE MONITORED AND MAINTAINED TO ENSURE THEY PROVIDE ADEQUATE PROTECTION TO THE INFRASTRUCTURE BEHIND THEM.

CAD: DD13310101B

				<p>COPYRIGHT</p> <p>The concepts and information contained in this document are the Copyright of m p rogers & associates. Use or copying of the document in whole or part without the written permission of m p rogers & associates constitutes an infringement of copyright.</p>				<p>This plan is not to be used for construction unless issued as Rev 0 and signed below</p>				<p>CLIENT CITY OF JOONDALUP</p>				<p>m p rogers & associates pl coastal and port engineers</p> <p>Suite 1, 128 Main Street t: +61 8 9254 6600 Osborne Park 6017 f: +61 8 9254 6699 Western Australia admin@coastsandports.com.au</p>				<p>PROJECT JOONDALUP COASTAL HAZARD ASSESSMENT</p>			
<p>B 15.06.16 TSH MINOR UPDATES & REISSUED</p>																<p>TITLE COASTAL HAZARD MAPS MARMION TO WHITFORDS NODES</p>							
<p>A 2.06.16 TSH PRELIMINARY ISSUE</p>																<p>SCALE AT A1 1:5,000 DRAWING NUMBER D1331-01-01 REV B</p>							
REV	DATE	APPROVED	AMENDMENT	REV	DATE	APPROVED	AMENDMENT	REV	DATE	APPROVED	AMENDMENT	DESIGNED	CHECKED	APPROVED	DRAWN	CHECKED							
												T. VAN BEEM	T. HUNT										



LEGEND:

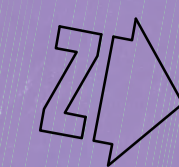
	2015 COASTAL EROSION		SEAWALL
	2065 COASTAL EROSION		ROCK
	2115 COASTAL EROSION		



- NOTES:**
1. AERIAL PHOTOGRAPH TAKEN SEPTEMBER 2015, SUPPLIED BY CITY OF JOONDALUP.
 2. INUNDATION EXTENTS BASED ON 5m GRIDDED LIDAR DATA SUPPLIED BY DOT. SURVEY COMPLETED 2009.
 3. EXPOSED ROCK FROM DOT (2005) & GEOTECH INVESTIGATION (2015).
 4. SEAWALL LOCATIONS FROM DOT (2005).
 5. TO BE READ IN CONJUNCTION WITH MRA REPORT R771.
 6. ROCK SHORELINES AND SEAWALLS WILL NEED TO BE MONITORED AND MAINTAINED TO ENSURE THEY PROVIDE ADEQUATE PROTECTION TO THE INFRASTRUCTURE BEHIND THEM.
- CAD: DD13310102B



				<p>COPYRIGHT</p> <p>The concepts and information contained in this document are the Copyright of m p rogers & associates. Use or copying of the document in whole or part without the written permission of m p rogers & associates constitutes an infringement of copyright.</p>				<p>This plan is not to be used for construction unless issued as Rev 0 and signed below</p>				<p>CLIENT CITY OF JOONDALUP</p>				<p>m p rogers & associates pl coastal and port engineers</p> <p>Suite 1, 128 Main Street Osborne Park 6017 Western Australia</p> <p>t: +61 8 9254 6600 f: +61 8 9254 6699 admin@coastsandports.com.au</p>				<p>PROJECT JOONDALUP COASTAL HAZARD ASSESSMENT</p>																									
<table border="1"> <tr> <td>B</td> <td>15.06.16</td> <td>TSH</td> <td>MINOR UPDATES & REISSUED</td> </tr> <tr> <td>A</td> <td>2.06.16</td> <td>TSH</td> <td>PRELIMINARY ISSUE</td> </tr> </table>				B	15.06.16	TSH	MINOR UPDATES & REISSUED	A	2.06.16	TSH	PRELIMINARY ISSUE									<p>TITLE COASTAL HAZARD MAPS WHITFORDS NODES TO MULLALOO</p>																									
B	15.06.16	TSH	MINOR UPDATES & REISSUED																																										
A	2.06.16	TSH	PRELIMINARY ISSUE																																										
<table border="1"> <tr> <th>REV</th> <th>DATE</th> <th>APPROVED</th> <th>AMENDMENT</th> </tr> <tr> <td> </td> <td> </td> <td> </td> <td> </td> </tr> </table>				REV	DATE	APPROVED	AMENDMENT					<table border="1"> <tr> <th>REV</th> <th>DATE</th> <th>APPROVED</th> <th>AMENDMENT</th> </tr> <tr> <td> </td> <td> </td> <td> </td> <td> </td> </tr> </table>				REV	DATE	APPROVED	AMENDMENT					<table border="1"> <tr> <td>DESIGNED</td> <td>CHECKED</td> <td>APPROVED</td> </tr> <tr> <td>T. VAN BEEM</td> <td>T. HUNT</td> <td> </td> </tr> </table>				DESIGNED	CHECKED	APPROVED	T. VAN BEEM	T. HUNT		<p>SCALE AT A1 1:5,000</p>				<p>DRAWING NUMBER D1331-01-02</p>				<p>REV B</p>			
REV	DATE	APPROVED	AMENDMENT																																										
REV	DATE	APPROVED	AMENDMENT																																										
DESIGNED	CHECKED	APPROVED																																											
T. VAN BEEM	T. HUNT																																												



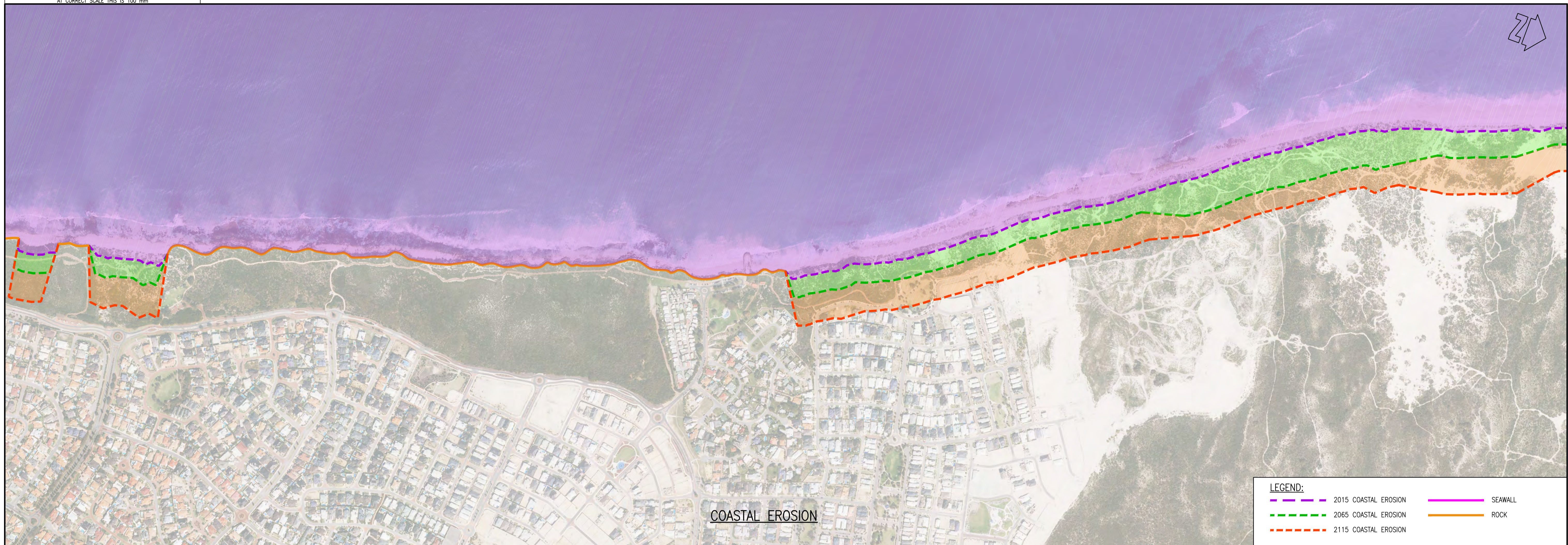
LEGEND:

	2015 COASTAL EROSION		SEAWALL
	2065 COASTAL EROSION		ROCK
	2115 COASTAL EROSION		



- NOTES:**
1. AERIAL PHOTOGRAPH TAKEN SEPTEMBER 2015, SUPPLIED BY CITY OF JOONDALUP.
 2. INUNDATION EXTENTS BASED ON 5m GRIDDED LIDAR DATA SUPPLIED BY DOT. SURVEY COMPLETED 2009.
 3. EXPOSED ROCK FROM DOT (2005) & GEOTECH INVESTIGATION (2015).
 4. SEAWALL LOCATIONS FROM DOT (2005).
 5. TO BE READ IN CONJUNCTION WITH MRA REPORT R771.
 6. ROCK SHORELINES AND SEAWALLS WILL NEED TO BE MONITORED AND MAINTAINED TO ENSURE THEY PROVIDE ADEQUATE PROTECTION TO THE INFRASTRUCTURE BEHIND THEM.
- CAD: DD13310103B

						<p>COPYRIGHT</p> <p>The concepts and information contained in this document are the Copyright of m p rogers & associates. Use or copying of the document in whole or part without the written permission of m p rogers & associates constitutes an infringement of copyright.</p>		<p>This plan is not to be used for construction unless issued as Rev 0 and signed below</p>		<p>CLIENT CITY OF JOONDALUP</p>		<p>m p rogers & associates pl coastal and port engineers</p> <p>Suite 1, 128 Main Street Osborne Park 6017 Western Australia</p> <p>t: +61 8 9254 6600 f: +61 8 9254 6699 admin@coastsandports.com.au</p>		<p>PROJECT JOONDALUP COASTAL HAZARD ASSESSMENT</p>	
<p>B 15.06.16 TSH MINOR UPDATES & REISSUED</p>												<p>TITLE COASTAL HAZARD MAPS OCEAN REEF</p>			
<p>A 2.06.16 TSH PRELIMINARY ISSUE</p>												<p>SCALE AT A1 1:5,000</p>		<p>DRAWING NUMBER D1331-01-03</p>	
REV	DATE	APPROVED	AMENDMENT	REV	DATE	APPROVED	AMENDMENT			DRAWN	CHECKED	APPROVED		REV	B
										T. VAN BEEM	T. HUNT				



COASTAL EROSION

LEGEND:

	2015 COASTAL EROSION		SEAWALL
	2065 COASTAL EROSION		ROCK
	2115 COASTAL EROSION		



2115 COASTAL INUNDATION

- NOTES:**
1. AERIAL PHOTOGRAPH TAKEN SEPTEMBER 2015, SUPPLIED BY CITY OF JOONDALUP.
 2. INUNDATION EXTENTS BASED ON 5m GRIDDED LIDAR DATA SUPPLIED BY DOT. SURVEY COMPLETED 2009.
 3. EXPOSED ROCK FROM DOT (2005) & GEOTECH INVESTIGATION (2015).
 4. SEAWALL LOCATIONS FROM DOT (2005).
 5. TO BE READ IN CONJUNCTION WITH MRA REPORT R771.
 6. ROCK SHORELINES AND SEAWALLS WILL NEED TO BE MONITORED AND MAINTAINED TO ENSURE THEY PROVIDE ADEQUATE PROTECTION TO THE INFRASTRUCTURE BEHIND THEM.
- CAD: DD13310104B



				<p>COPYRIGHT</p> <p>The concepts and information contained in this document are the Copyright of m p rogers & associates. Use or copying of the document in whole or part without the written permission of m p rogers & associates constitutes an infringement of copyright.</p>				<p>This plan is not to be used for construction unless issued as Rev 0 and signed below</p>				<p>CLIENT CITY OF JOONDALUP</p>				<p>m p rogers & associates pl coastal and port engineers</p> <p>Suite 1, 128 Main Street t: +61 8 9254 6600 Osborne Park 6017 f: +61 8 9254 6699 Western Australia admin@coastsandports.com.au</p>				<p>PROJECT JOONDALUP COASTAL HAZARD ASSESSMENT</p>			
<p>B 15.06.16 TSH MINOR UPDATES & REISSUED</p>																							
<p>A 2.06.16 TSH PRELIMINARY ISSUE</p>																							
REV	DATE	APPROVED	AMENDMENT	REV	DATE	APPROVED	AMENDMENT	DESIGNED	CHECKED	APPROVED	DRAWN	CHECKED	SCALE AT A1	DRAWING NUMBER	REV								
								T. VAN BEEM	T. HUNT				1:5,000	D1331-01-04	B								

m p rogers & associates pl

www.coastsandports.com.au