

# ADOPT A COASTLINE

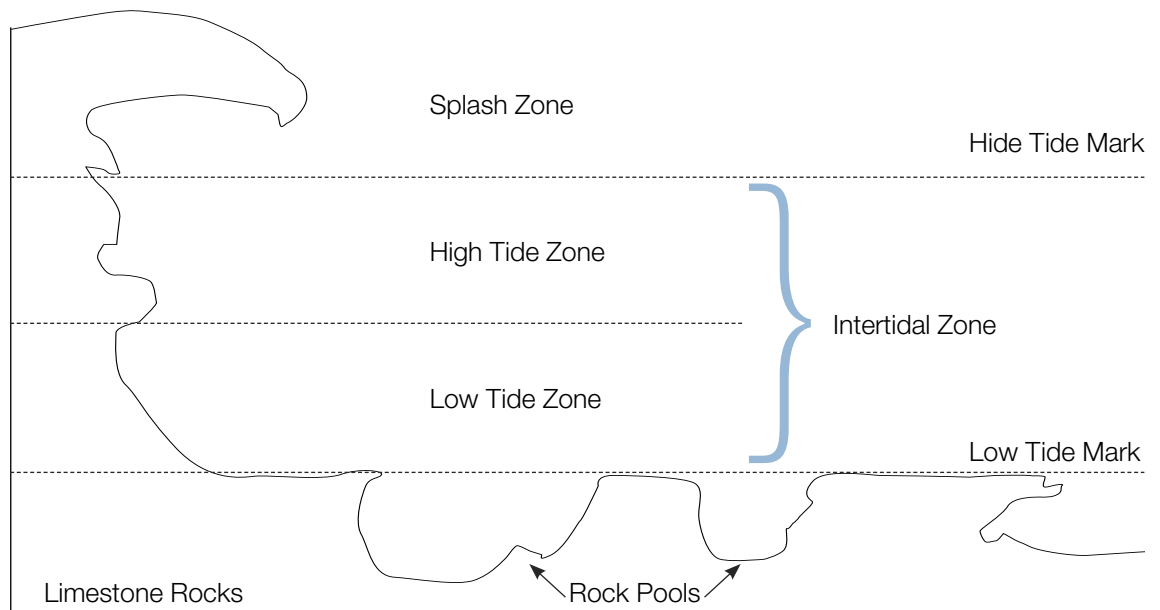
NAME

## STUDENT ACTIVITY

# LIFE IN THE EXTREMES

All along the Western Australian coastline are limestone outcrops. These outcrops are exposed to extreme weather conditions; hot, dry conditions, followed by salt water spray or being completely covered, strong winds, crashing waves and freshwater downpours from rain. The plants and animals that live here have to be true survivors. They have developed features that help them to survive – these features are called adaptations.

The rocky shore can be divided into several zones. The zones all have different conditions and the animals and plants who live there have adapted to these conditions.



The above diagram shows the different zones found on the rocky shore. Limestone rocky shores are formed by erosion, often having overhangs and rock pools.

Colour the limestone rock yellow.

Leave the Splash Zone clear.

Colour the High Tide Zone light green.

Colour the Low Tide Zone light blue.

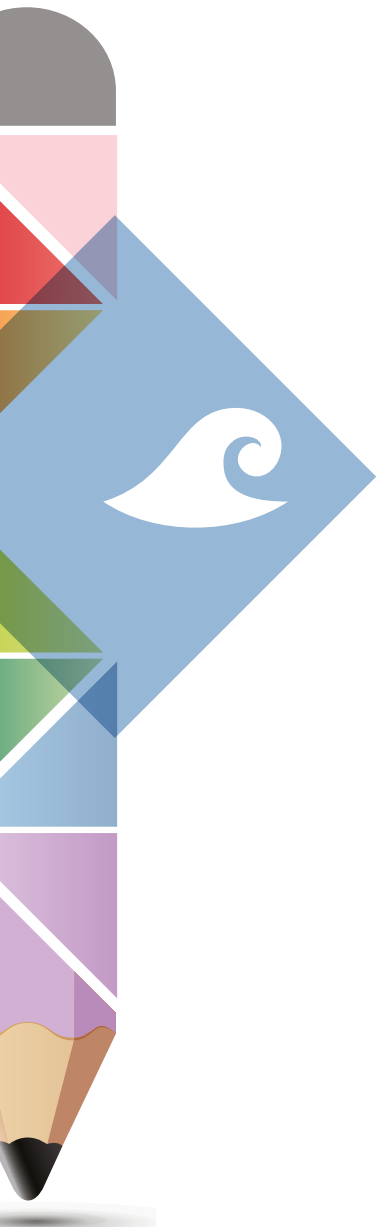
Colour beneath the Low Tide Mark dark blue.

Complete the table below by researching information about rocky shores. These websites may help:

- Coastwest and Department of Fisheries, no date, *Beachcombers Field Guide*, website: <http://beachcombers-kit.fish.wa.gov.au/wp-content/uploads/2011/05/Beachcombers-Field-Guide.pdf>
- Coastwest and the Department of Fisheries, 2011, *Beach Profile*, website: <http://beachcombers-kit.fish.wa.gov.au/wp-content/uploads/2011/05/Beach-Profile.pdf>
- Coastwest and the Department of Fisheries, 2011, *Limestone Rocky Shores*, website: <http://beachcombers-kit.fish.wa.gov.au/wp-content/uploads/2011/03/Limestone-Rocky-Shores.pdf>
- Davey, K., 2000, *Life on Australian Seashores*, website: [http://www.mesa.edu.au/friends/seashores/limestone\\_shores.html](http://www.mesa.edu.au/friends/seashores/limestone_shores.html).



ZONE	ENVIRONMENTAL CONDITIONS	PLANTS and ANIMALS	ADAPTATIONS
<i>Splash Zone</i>			
<i>High Tide Zone</i>			
<i>Mid Tide Zone</i>			
<i>Low Tide Zone</i>			
<i>INTERTIDAL ZONE</i>			



Octopus



Abalone



Blue Swimmer Crab



Sea Star



Golden Ghost Crab



Mussel



Sea Urchin



Seaweed