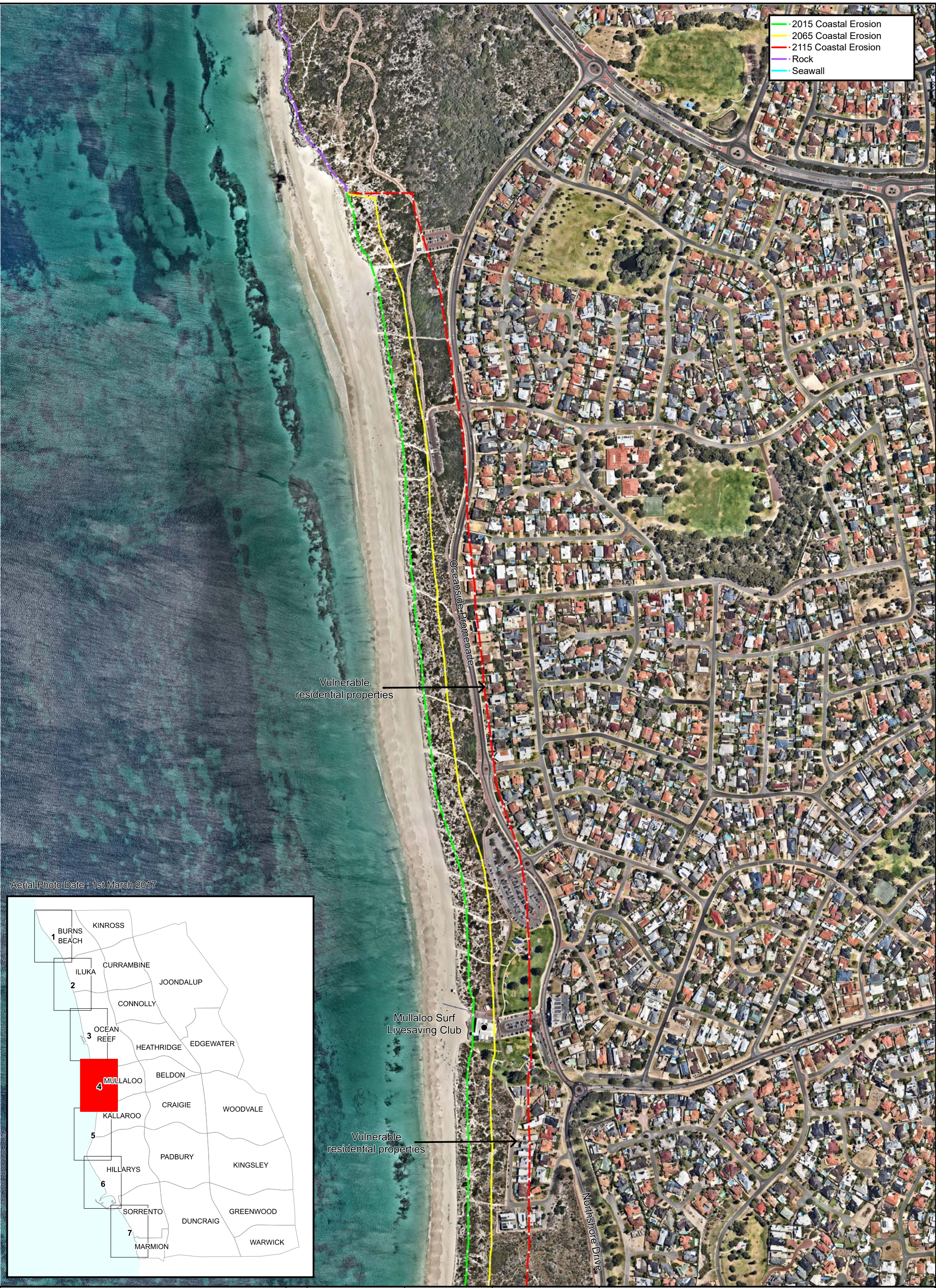
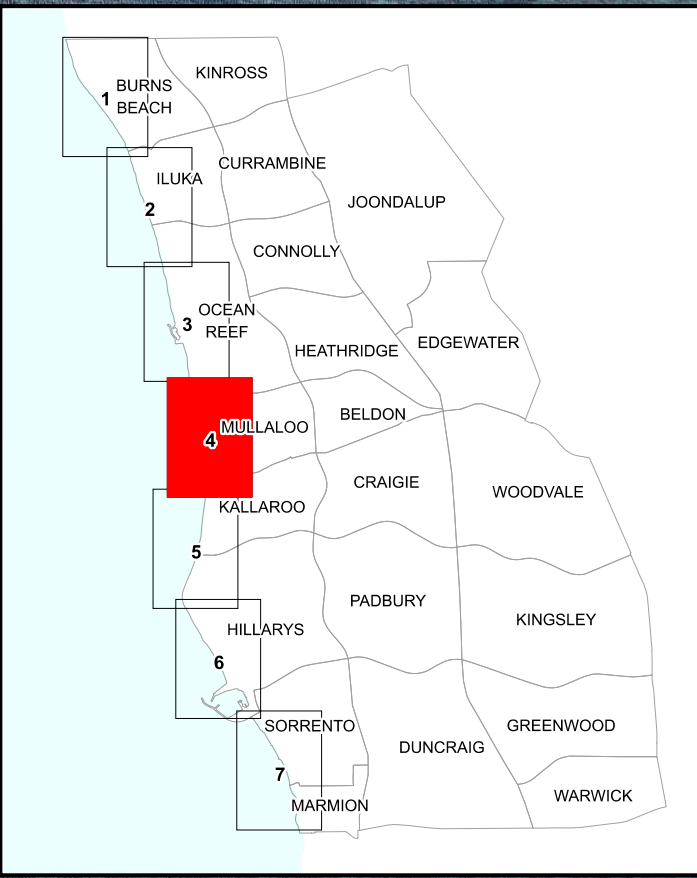


- 2015 Coastal Erosion
- 2065 Coastal Erosion
- 2115 Coastal Erosion
- Rock
- Seawall



Aerial Photo Date : 1st March 2017



90 Boas Ave, Joondalup WA 6027
 PO Box 21, Joondalup WA 6919
 Ph: 08 9400 4000
 Fax: 08 9300 1383
 info@joondalup.wa.gov.au
 www.joondalup.wa.gov.au

Scale (A3): 1 : 6000	Date: 28/1/2021	Compiled: A Gilbert
File: Coastal_Hazard_Assessment_Map_4.wor		
Folder: E:\GIS Projects\Coastal Vulnerability\2016\Public		
DISCLAIMER: While every care is taken to ensure the accuracy of this data, the City of Joondalup makes no representations or warranties about its accuracy, completeness or suitability for any particular purpose and disclaims all liability for all expenses, losses, damages, and costs which you might incur as a result of the data being inaccurate or incomplete in any way and for any reason.		

Coastal Hazard Assessment Map 4