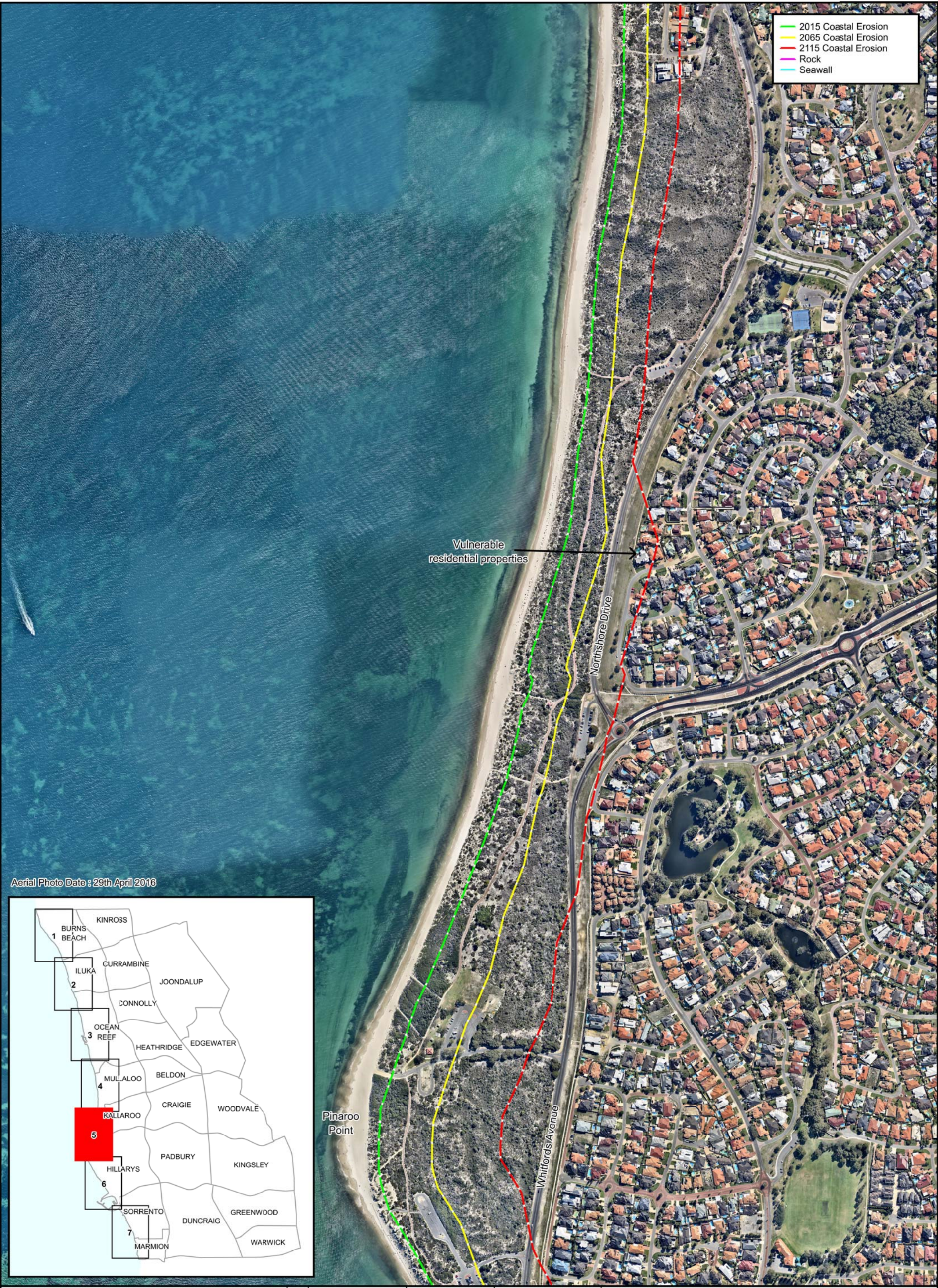


- 2015 Coastal Erosion
- 2065 Coastal Erosion
- 2115 Coastal Erosion
- Rock
- Seawall



Aerial Photo Date : 29th April 2016



90 Boas Ave, Joondalup WA 6027  
 PO Box 21, Joondalup WA 6919  
 Ph: 08 9400 4000  
 Fax: 08 9300 1383  
 info@joondalup.wa.gov.au  
 www.joondalup.wa.gov.au

Scale (A3): 1 : 6000    Date: 29/7/2016    Compiled: A Gilbert  
 File: Coastal\_Hazard\_Assessment\_Map\_5.wor  
 Folder: E:\GIS Projects\Coastal Vulnerability\2016\Public  
 DISCLAIMER: While every care is taken to ensure the accuracy of this data, the City of Joondalup makes no representations or warranties about its accuracy, completeness or suitability for any particular purpose and disclaims all liability for all expenses, losses, damages, and costs which you might incur as a result of the data being inaccurate or incomplete in any way and for any reason.

## Coastal Hazard Assessment Map 5