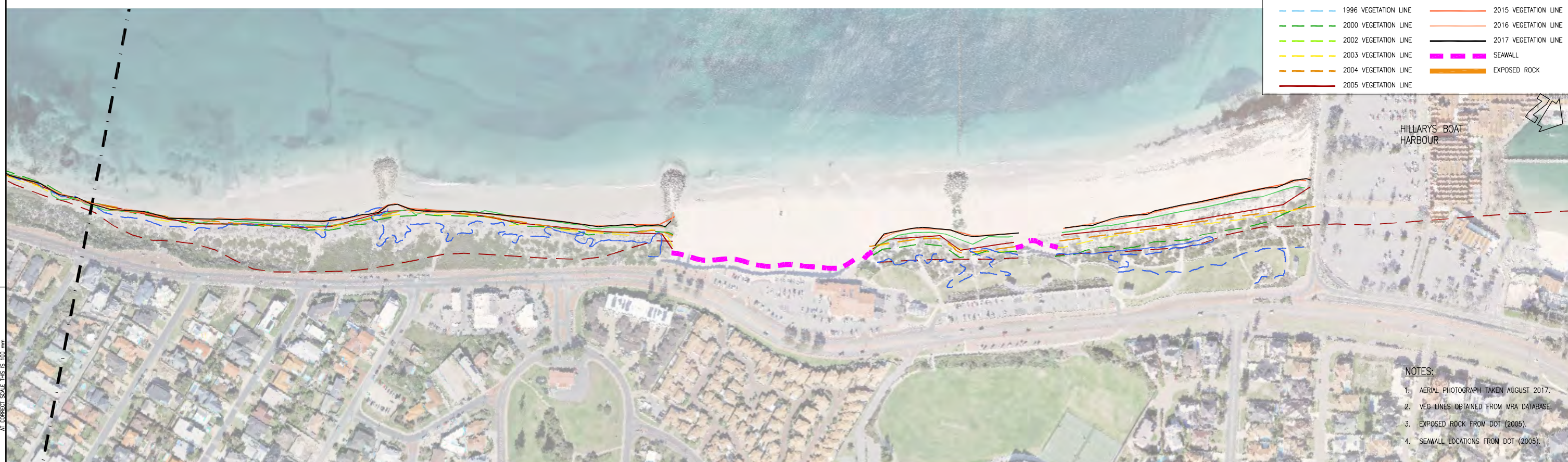


Appendix A Shoreline Movement Plans



LEGEND:

- - - 1942 VEGETATION LINE	— 2006 VEGETATION LINE
- - - 1965 VEGETATION LINE	— 2008 VEGETATION LINE
- - - 1980 VEGETATION LINE	— 2010 VEGETATION LINE
- - - 1987 VEGETATION LINE	— 2013 VEGETATION LINE
- - - 1996 VEGETATION LINE	— 2015 VEGETATION LINE
- - - 2000 VEGETATION LINE	— 2016 VEGETATION LINE
- - - 2002 VEGETATION LINE	— 2017 VEGETATION LINE
- - - 2003 VEGETATION LINE	— SEAWALL
- - - 2004 VEGETATION LINE	— EXPOSED ROCK
- - - 2005 VEGETATION LINE	



HILLARYS BOAT HARBOUR

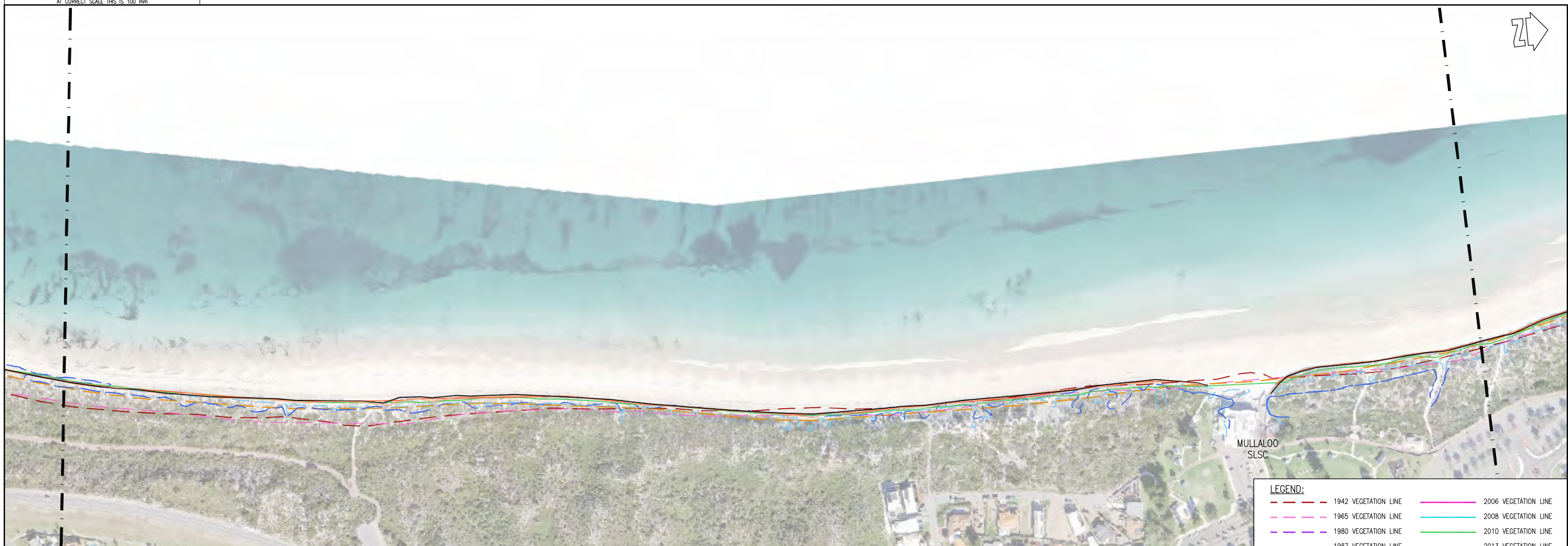


- NOTES:**
1. AERIAL PHOTOGRAPH TAKEN AUGUST 2017.
 2. VEG. LINES OBTAINED FROM MRA DATABASE.
 3. EXPOSED ROCK FROM DOT (2005).
 4. SEAWALL LOCATIONS FROM DOT (2005).

CAD: D14770101A

				<p>COPYRIGHT</p> <p>The concepts and information contained in this document are the Copyright of m p rogers & associates. Use or copying of the document in whole or part without the written permission of m p rogers & associates constitutes an infringement of copyright.</p>				<p>This plan is not to be used for construction unless issued as Rev 0 and signed below</p>				<p>CLIENT CITY OF JOONDALUP</p>				<p>m p rogers & associates pl coastal and port engineers</p> <p>Suite 1, 128 Main Street Osborne Park 6017 Western Australia</p> <p>t: +61 8 9254 6600 f: +61 8 9254 6699 admin@coastsandports.com.au</p>				<p>PROJECT JOONDALUP COASTAL MONITORING</p>			
												<p>TITLE SHORELINE MOVEMENT PLAN MARMION TO SORRENTO</p>											
<p>A 11.12.17 TSH PRELIMINARY ISSUE</p>												<p>SCALE AT A1 1:2,000</p>											
<p>REV DATE APPROVED AMENDMENT</p>				<p>REV DATE APPROVED AMENDMENT</p>				<p>DESIGNED R. BORJA</p>				<p>CHECKED T. HUNT</p>											
												<p>DRAWING NUMBER D1477-01-01</p>											
												<p>REV A</p>											

AT CORRECT SCALE THIS IS 100 mm



LEGEND:

1942 VEGETATION LINE	2006 VEGETATION LINE
1965 VEGETATION LINE	2008 VEGETATION LINE
1980 VEGETATION LINE	2010 VEGETATION LINE
1987 VEGETATION LINE	2013 VEGETATION LINE
1996 VEGETATION LINE	2015 VEGETATION LINE
2000 VEGETATION LINE	2016 VEGETATION LINE
2002 VEGETATION LINE	2017 VEGETATION LINE
2003 VEGETATION LINE	SEAWALL
2004 VEGETATION LINE	EXPOSED ROCK
2005 VEGETATION LINE	



- NOTES:**
1. AERIAL PHOTOGRAPH TAKEN AUGUST 2017.
 2. VEG. LINES OBTAINED FROM MRS. DATABASE.
 3. EXPOSED ROCK FROM DOT (2005).
 4. SEAWALL LOCATIONS FROM DOT (2005).

CAD: D14770103A

				<p>COPYRIGHT</p> <p>The concepts and information contained in this document are the Copyright of m p rogers & associates. Use or copying of the document in whole or part without the written permission of m p rogers & associates constitutes an infringement of copyright.</p>				<p>This plan is not to be used for construction unless issued as Rev 0 and signed below</p>				<p>CLIENT CITY OF JOONDALUP</p>				<p>m p rogers & associates pl coastal and port engineers</p> <p>Suite 1, 128 Main Street Osborne Park 6017 Western Australia</p> <p>t: +61 8 9254 6600 f: +61 8 9254 6699 admin@coastsandports.com.au</p>				<p>PROJECT JOONDALUP COASTAL MONITORING</p>			
<p>DESIGNED</p>				<p>CHECKED</p>				<p>APPROVED</p>				<p>TITLE SHORELINE MOVEMENT PLAN WHITFORDS TO MULLALOO</p>											
<p>DRAWN R. BORJA</p>				<p>CHECKED T. HUNT</p>								<p>SCALE AT A1 1:2,000</p>											
<p>REV DATE APPROVED</p>				<p>AMENDMENT</p>								<p>DRAWING NUMBER D1477-01-03</p>											
<p>A 11.12.17 TSH PRELIMINARY ISSUE</p>												<p>REV A</p>											

AT CORRECT SCALE THIS IS 100 mm



LEGEND:

--- 1942 VEGETATION LINE	--- 1980 VEGETATION LINE	--- 2006 VEGETATION LINE
--- 1965 VEGETATION LINE	--- 1987 VEGETATION LINE	--- 2008 VEGETATION LINE
--- 1980 VEGETATION LINE	--- 1996 VEGETATION LINE	--- 2010 VEGETATION LINE
--- 1987 VEGETATION LINE	--- 2000 VEGETATION LINE	--- 2013 VEGETATION LINE
--- 1996 VEGETATION LINE	--- 2002 VEGETATION LINE	--- 2015 VEGETATION LINE
--- 2000 VEGETATION LINE	--- 2003 VEGETATION LINE	--- 2016 VEGETATION LINE
--- 2002 VEGETATION LINE	--- 2004 VEGETATION LINE	--- 2017 VEGETATION LINE
--- 2003 VEGETATION LINE	--- 2005 VEGETATION LINE	--- SEAWALL
--- 2004 VEGETATION LINE		--- EXPOSED ROCK
--- 2005 VEGETATION LINE		



- NOTES:**
1. AERIAL PHOTOGRAPH TAKEN AUGUST 2017.
 2. VEG LINES OBTAINED FROM MRA DATABASE.
 3. EXPOSED ROCK FROM DOT (2005).
 4. SEAWALL LOCATIONS FROM DOT (2006).

CAD: D14770104A

REV	DATE	APPROVED	AMENDMENT	REV	DATE	APPROVED	AMENDMENT
A	11.12.17	TSH	PRELIMINARY ISSUE				

COPYRIGHT The concepts and information contained in this document are the Copyright of m p rogers & associates. Use or copying of the document in whole or part without the written permission of m p rogers & associates constitutes an infringement of copyright.			This plan is not to be used for construction unless issued as Rev 0 and signed below		
CLIENT CITY OF JOONDALUP					
DESIGNED	CHECKED	APPROVED			
DRAWN R. BORJA	CHECKED T. HUNT				

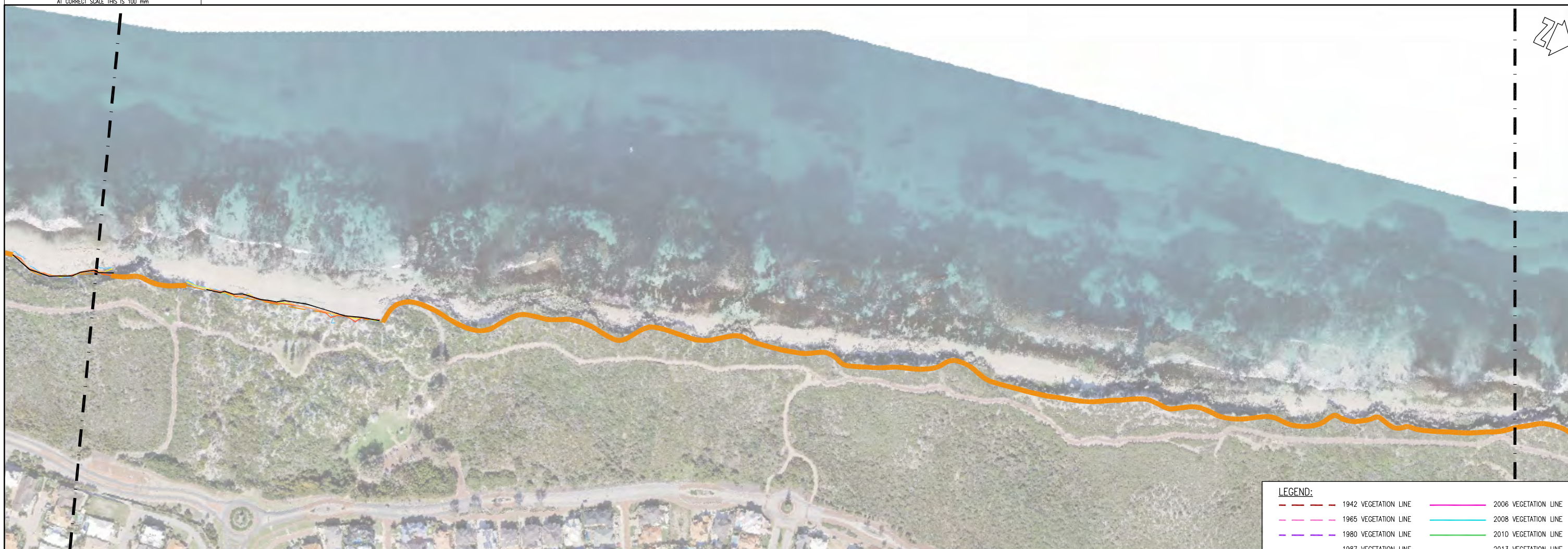
m p rogers & associates pl
coastal and port engineers

Suite 1, 128 Main Street
Osborne Park 6017
Western Australia

t: +61 8 9254 6600
f: +61 8 9254 6699
admin@coastsandports.com.au

PROJECT	JOONDALUP COASTAL MONITORING		
TITLE	SHORELINE MOVEMENT PLAN OCEAN REEF		
SCALE AT A1	1:2,000	DRAWING NUMBER	D1477-01-04
REV	A		

AT CORRECT SCALE THIS IS 100 mm



LEGEND:

1942 VEGETATION LINE	2006 VEGETATION LINE
1965 VEGETATION LINE	2008 VEGETATION LINE
1980 VEGETATION LINE	2010 VEGETATION LINE
1987 VEGETATION LINE	2013 VEGETATION LINE
1996 VEGETATION LINE	2015 VEGETATION LINE
2000 VEGETATION LINE	2016 VEGETATION LINE
2002 VEGETATION LINE	2017 VEGETATION LINE
2003 VEGETATION LINE	SEAWALL
2004 VEGETATION LINE	EXPOSED ROCK
2005 VEGETATION LINE	



- NOTES:**
1. AERIAL PHOTOGRAPH TAKEN AUGUST 2017.
 2. VEG LINES OBTAINED FROM MPA DATABASE.
 3. EXPOSED ROCK FROM DOT (2005).
 4. SEAWALL LOCATIONS FROM DOT (2005).

CAD: D14770105A

				<p>COPYRIGHT</p> <p>The concepts and information contained in this document are the Copyright of m p rogers & associates. Use or copying of the document in whole or part without the written permission of m p rogers & associates constitutes an infringement of copyright.</p>				<p>CLIENT</p> <p>CITY OF JOONDALUP</p>				<p>m p rogers & associates pl coastal and port engineers</p> <p>Suite 1, 128 Main Street Osborne Park 6017 Western Australia</p> <p>t: +61 8 9254 6600 f: +61 8 9254 6699 admin@coastsandports.com.au</p>				<p>PROJECT JOONDALUP COASTAL MONITORING</p> <p>TITLE SHORELINE MOVEMENT PLAN ILUKA TO BURNS BEACH</p>			
<p>DESIGNED</p> <p>R. BORJA</p>				<p>CHECKED</p> <p>T. HUNT</p>				<p>APPROVED</p>				<p>SCALE AT A1 1:2,000</p> <p>DRAWING NUMBER D1477-01-05</p> <p>REV A</p>							
<p>REV A</p> <p>DATE 11.12.17</p> <p>APPROVED TSH</p> <p>AMENDMENT PRELIMINARY ISSUE</p>				<p>REV</p> <p>DATE</p> <p>APPROVED</p> <p>AMENDMENT</p>				<p>CLIENT</p> <p>CITY OF JOONDALUP</p>				<p>m p rogers & associates pl coastal and port engineers</p> <p>Suite 1, 128 Main Street Osborne Park 6017 Western Australia</p> <p>t: +61 8 9254 6600 f: +61 8 9254 6699 admin@coastsandports.com.au</p>				<p>PROJECT JOONDALUP COASTAL MONITORING</p> <p>TITLE SHORELINE MOVEMENT PLAN ILUKA TO BURNS BEACH</p>			

AT CORRECT SCALE THIS IS 100 mm



LEGEND:

1942 VEGETATION LINE	2006 VEGETATION LINE
1965 VEGETATION LINE	2008 VEGETATION LINE
1980 VEGETATION LINE	2010 VEGETATION LINE
1987 VEGETATION LINE	2013 VEGETATION LINE
1996 VEGETATION LINE	2015 VEGETATION LINE
2000 VEGETATION LINE	2016 VEGETATION LINE
2002 VEGETATION LINE	2017 VEGETATION LINE
2003 VEGETATION LINE	SEAWALL
2004 VEGETATION LINE	EXPOSED ROCK
2005 VEGETATION LINE	

NOTES:

1. AERIAL PHOTOGRAPH TAKEN AUGUST 2017.
2. VEG LINES OBTAINED FROM MRA DATABASE.
3. EXPOSED ROCK FROM DOT (2005).
4. SEAWALL LOCATIONS FROM DOT (2005).

CAD: D14770106A

AT CORRECT SCALE THIS IS 100 mm

				<p>COPYRIGHT</p> <p>The concepts and information contained in this document are the Copyright of m p rogers & associates. Use or copying of the document in whole or part without the written permission of m p rogers & associates constitutes an infringement of copyright.</p>				<p>CLIENT</p> <p>CITY OF JOONDALUP</p>				<p>m p rogers & associates pl coastal and port engineers</p> <p>Suite 1, 128 Main Street t: +61 8 9254 6600 Osborne Park 6017 f: +61 8 9254 6699 Western Australia admin@coastsandports.com.au</p>				<p>PROJECT</p> <p>JOONDALUP COASTAL MONITORING</p>			
				<p>This plan is not to be used for construction unless issued as Rev 0 and signed below</p>								<p>TITLE</p> <p>SHORELINE MOVEMENT PLAN BURNS BEACH</p>							
<p>DESIGNED</p> <p>R. BORJA</p>				<p>CHECKED</p> <p>T. HUNT</p>				<p>APPROVED</p>				<p>SCALE AT A1</p> <p>1:2,000</p>							
<p>REV</p> <p>A</p>				<p>DATE</p> <p>11.12.17</p>				<p>APPROVED</p> <p>TSH</p>				<p>DRAWING NUMBER</p> <p>D1477-01-06</p>							
<p>AMENDMENT</p> <p>PRELIMINARY ISSUE</p>												<p>REV</p> <p>A</p>							