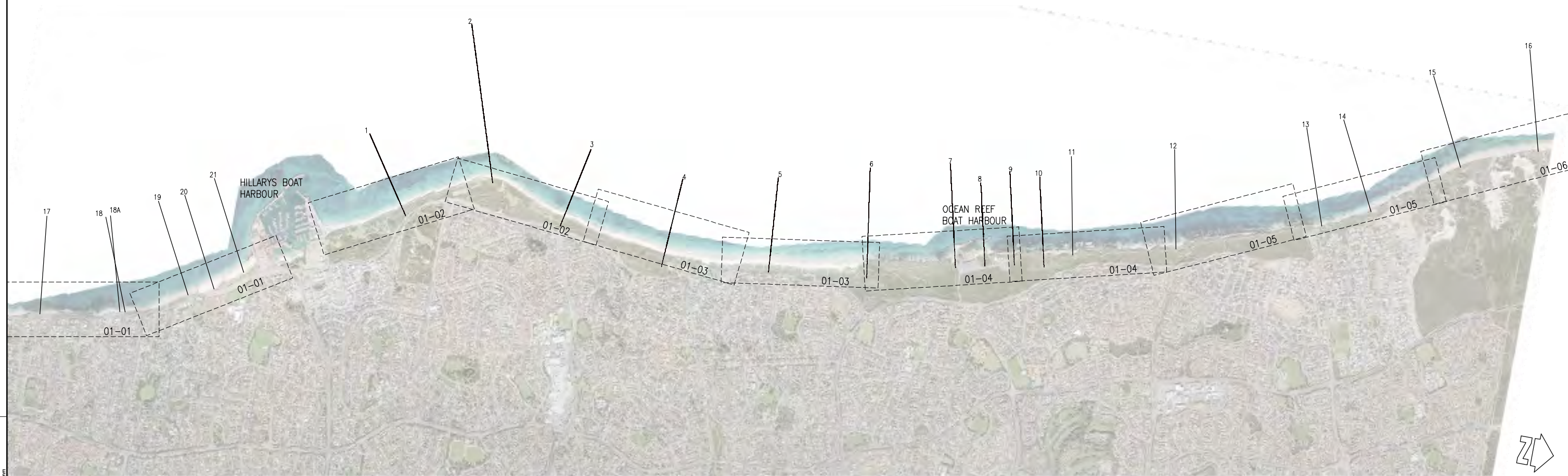


**Appendix C Photographic Monitoring & Survey Locations**

# CITY OF JOONDALUP

## COASTAL MONITORING

DRAWING No.	TITLE
D1477-02-01	MARMION TO SORRENTO
D1477-02-02	HILLARYS TO WHITFORDS
D1477-02-03	WHITFORDS TO MULLALOO
D1477-02-04	OCEAN REEF
D1477-02-05	ILUKA TO BURNS BEACH
D1477-02-06	BURNS BEACH



CAD: D14770200A

				<p><b>COPYRIGHT</b></p> <p>The concepts and information contained in this document are the Copyright of m p rogers &amp; associates. Use or copying of the document in whole or part without the written permission of m p rogers &amp; associates constitutes an infringement of copyright.</p>				<p>This plan is not to be used for construction unless issued as Rev 0 and signed below</p>				<p>CLIENT CITY OF JOONDALUP</p>				<p><b>m p rogers &amp; associates pl</b> coastal and port engineers</p> <p>Suite 1, 128 Main Street t: +61 8 9254 6600 Osborne Park 6017 f: +61 8 9254 6699 Western Australia admin@coastsandports.com.au</p>				<p>PROJECT JOONDALUP COASTAL MONITORING</p>			
												<p>TITLE <b>SHORELINE MOVEMENT DRAWING LIST &amp; SHEET LAYOUT</b></p>											
<p>DESIGNED T. HUNT</p>				<p>CHECKED T. HUNT</p>				<p>APPROVED</p>				<p>SCALE AT A1 NTS</p>											
<p>DRAWN R. BORJA</p>				<p>CHECKED T. HUNT</p>				<p>DRAWING NUMBER D1477-02-00</p>				<p>REV A</p>											
REV	DATE	APPROVED	AMENDMENT	REV	DATE	APPROVED	AMENDMENT																
A	11.12.17	TSH	PRELIMINARY ISSUE																				

AT CORRECT SCALE THIS IS 100 mm



**LEGEND:**

- SEAWALL
- EXPOSED ROCK
- MONITORING PHOTO
- MONITORING PROFILE



**NOTES:**

1. AERIAL PHOTOGRAPH TAKEN AUGUST 2017.
2. EXPOSED ROCK FROM DOT (2005).
3. SEAWALL LOCATIONS FROM DOT (2005).

CAD: D14770201A

REV	DATE	APPROVED	AMENDMENT	REV	DATE	APPROVED	AMENDMENT
A	11.12.17	TSH	PRELIMINARY ISSUE				

**COPYRIGHT**  
The concepts and information contained in this document are the Copyright of m p rogers & associates. Use or copying of the document in whole or part without the written permission of m p rogers & associates constitutes an infringement of copyright.

This plan is not to be used for construction unless issued as Rev 0 and signed below

CLIENT CITY OF JOONDALUP		
DESIGNED	CHECKED	APPROVED
DRAWN R. BORJA	CHECKED T. HUNT	

**m p rogers & associates pl**  
coastal and port engineers  
Suite 1, 128 Main Street  
Osborne Park 6017  
Western Australia  
t: +61 8 9254 6600  
f: +61 8 9254 6699  
admin@coastsandports.com.au

PROJECT JOONDALUP COASTAL MONITORING	TITLE SHORELINE MOVEMENT PLAN MARMION TO SORRENTO
SCALE AT A1 1:2,000	DRAWING NUMBER D1477-02-01
REV A	

AT CORRECT SCALE THIS IS 100 mm



**LEGEND:**

- SEAWALL
- EXPOSED ROCK
- x MONITORING PHOTO
- MONITORING PROFILE



**NOTES:**

1. AERIAL PHOTOGRAPH TAKEN AUGUST 2017.
2. EXPOSED ROCK FROM DOT (2005).
3. SEAWALL LOCATIONS FROM DOT (2005).

CAD: D14770202A

REV	DATE	APPROVED	AMENDMENT	REV	DATE	APPROVED	AMENDMENT
A	11.12.17	TSH	PRELIMINARY ISSUE				

<b>COPYRIGHT</b>								
The concepts and information contained in this document are the Copyright of m p rogers & associates. Use or copying of the document in whole or part without the written permission of m p rogers & associates constitutes an infringement of copyright.								
This plan is not to be used for construction unless issued as Rev 0 and signed below								
<table border="0" style="width: 100%;"> <tr> <td style="width: 33%;">CLIENT CITY OF JOONDALUP</td> <td style="width: 33%;">DESIGNED R. BORJA</td> <td style="width: 33%;">CHECKED T. HUNT</td> </tr> <tr> <td></td> <td></td> <td style="text-align: center;">APPROVED</td> </tr> </table>			CLIENT CITY OF JOONDALUP	DESIGNED R. BORJA	CHECKED T. HUNT			APPROVED
CLIENT CITY OF JOONDALUP	DESIGNED R. BORJA	CHECKED T. HUNT						
		APPROVED						

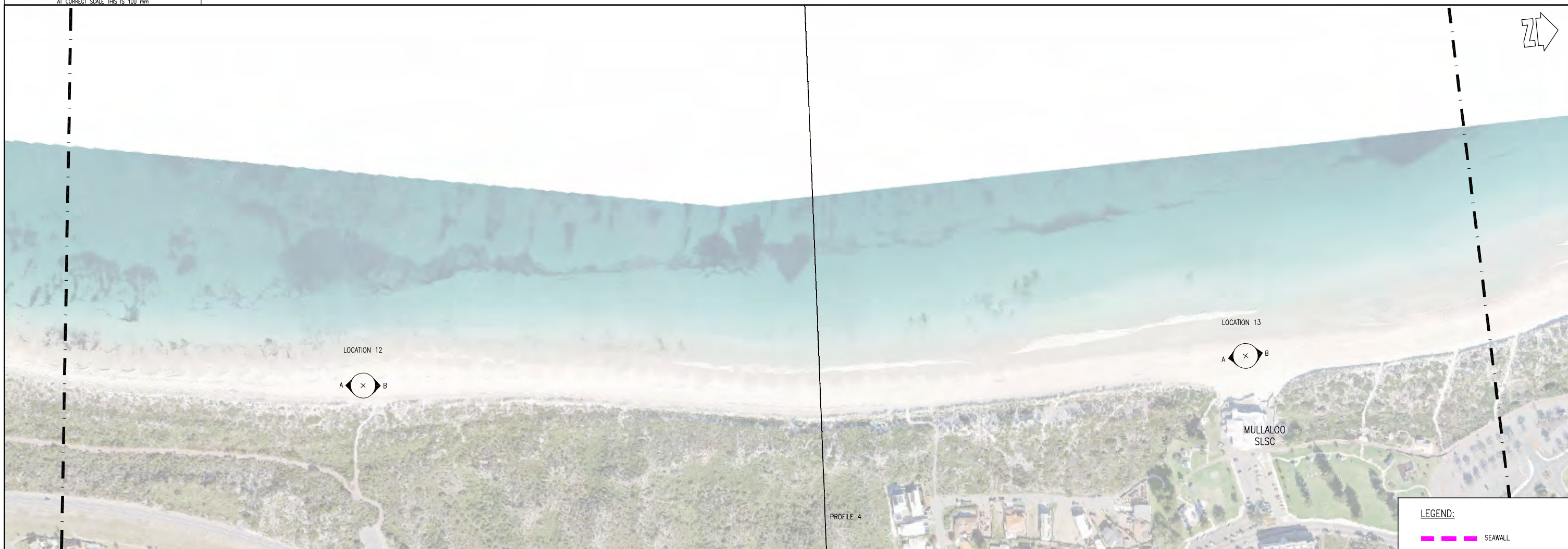
**m p rogers & associates pl**  
 coastal and port engineers

Suite 1, 128 Main Street  
 Osborne Park 6017  
 Western Australia



t: +61 8 9254 6600  
 f: +61 8 9254 6699  
 admin@coastsandports.com.au

PROJECT JOONDALUP COASTAL MONITORING		
TITLE SHORELINE MOVEMENT PLAN HILLARYS TO WHITFORDS		
SCALE AT A1 1:2,000	DRAWING NUMBER D1477-02-02	REV A

AT CORRECT SCALE THIS IS 100 mm



**LEGEND:**

- SEAWALL
- EXPOSED ROCK
-  MONITORING PHOTO
-  MONITORING PROFILE

- NOTES:**
1. AERIAL PHOTOGRAPH TAKEN AUGUST 2017.
  2. EXPOSED ROCK FROM DOT (2005).
  3. SEAWALL LOCATIONS FROM DOT-(2005).

CAD: D14770203A

REV	DATE	APPROVED	AMENDMENT	REV	DATE	APPROVED	AMENDMENT
A	11.12.17	TSH	PRELIMINARY ISSUE				

**COPYRIGHT**  
The concepts and information contained in this document are the Copyright of m p rogers & associates. Use or copying of the document in whole or part without the written permission of m p rogers & associates constitutes an infringement of copyright.

This plan is not to be used for construction unless issued as Rev 0 and signed below

CLIENT CITY OF JOONDALUP		
DESIGNED	CHECKED	APPROVED
DRAWN R. BORJA	CHECKED T. HUNT	

**m p rogers & associates pl**  
coastal and port engineers

Suite 1, 128 Main Street  
Osborne Park 6017  
Western Australia


t: +61 8 9254 6600  
f: +61 8 9254 6699  
admin@coastsandports.com.au

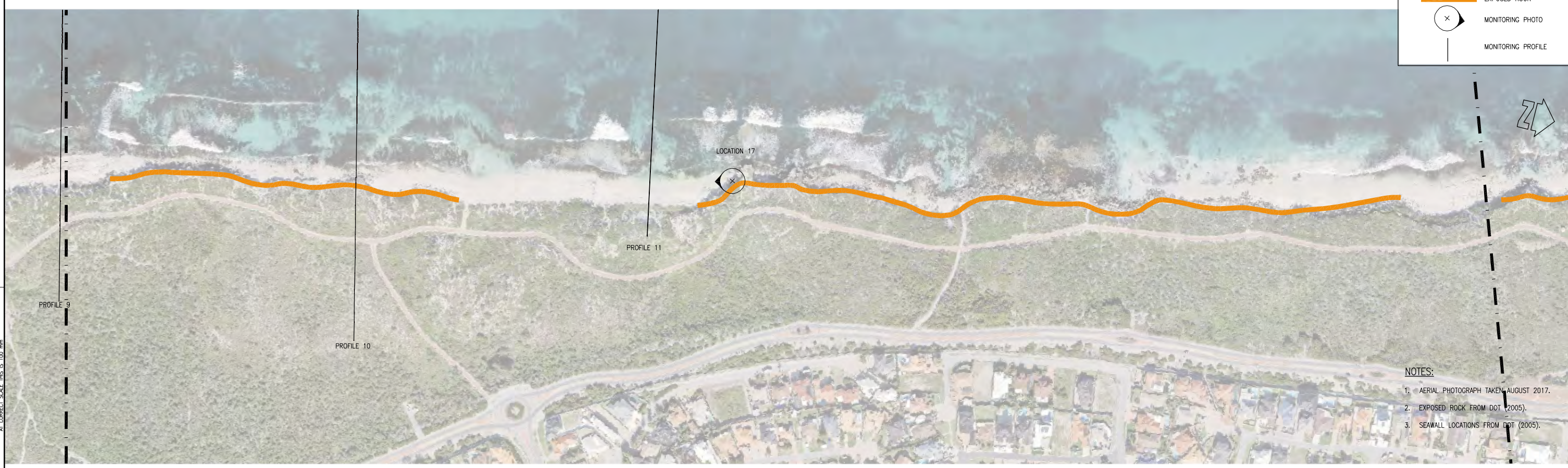
PROJECT	JOONDALUP COASTAL MONITORING
TITLE	SHORELINE MOVEMENT PLAN WHITFORDS TO MULLALOO
SCALE AT A1	1:2,000
DRAWING NUMBER	D1477-02-03
REV	A

AT CORRECT SCALE THIS IS 100 mm



**LEGEND:**

- █ SEAWALL
- █ EXPOSED ROCK
-  MONITORING PHOTO
-  MONITORING PROFILE



- NOTES:**
1. AERIAL PHOTOGRAPH TAKEN AUGUST 2017.
  2. EXPOSED ROCK FROM DOT (2005).
  3. SEAWALL LOCATIONS FROM DOT (2005).

CAD: D14770204A

REV	DATE	APPROVED	AMENDMENT	REV	DATE	APPROVED	AMENDMENT
A	11.12.17	TSH	PRELIMINARY ISSUE				

**COPYRIGHT**  
The concepts and information contained in this document are the Copyright of m p rogers & associates. Use or copying of the document in whole or part without the written permission of m p rogers & associates constitutes an infringement of copyright.

This plan is not to be used for construction unless issued as Rev 0 and signed below

CLIENT CITY OF JOONDALUP		
DESIGNED	CHECKED	APPROVED
DRAWN R. BORJA	CHECKED T. HUNT	

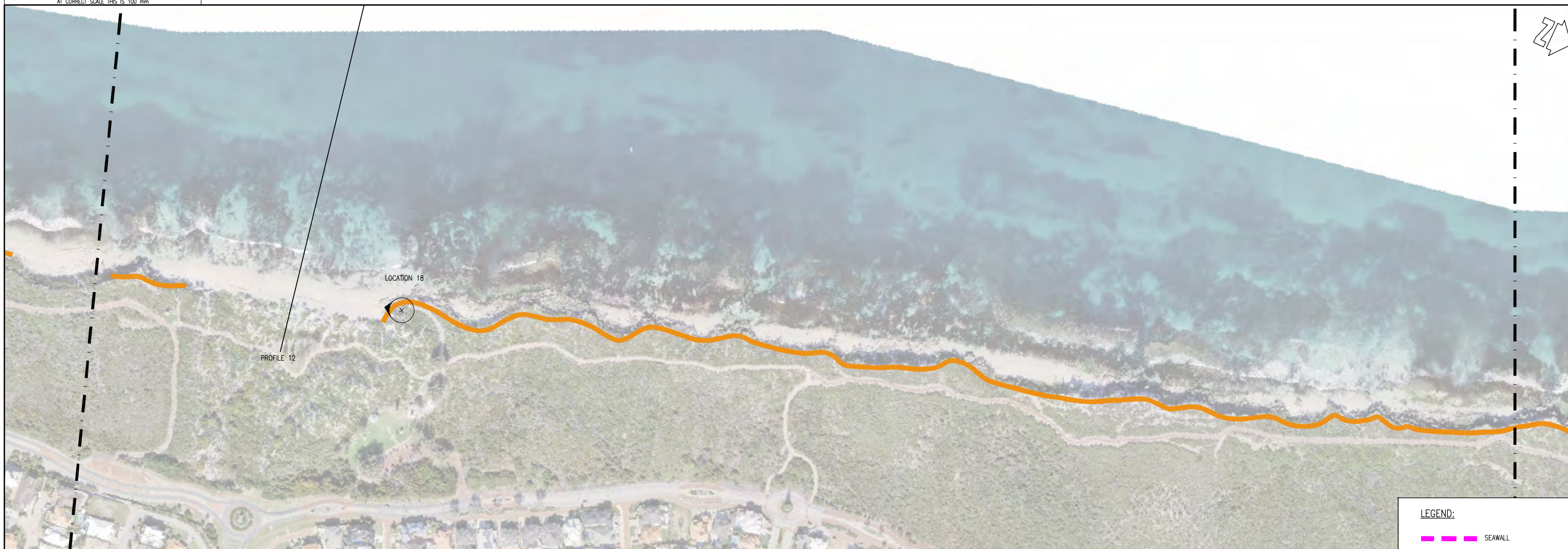
**m p rogers & associates pl**  
coastal and port engineers

Suite 1, 128 Main Street  
Osborne Park 6017  
Western Australia

t: +61 8 9254 6600  
f: +61 8 9254 6699  
admin@coastsandports.com.au

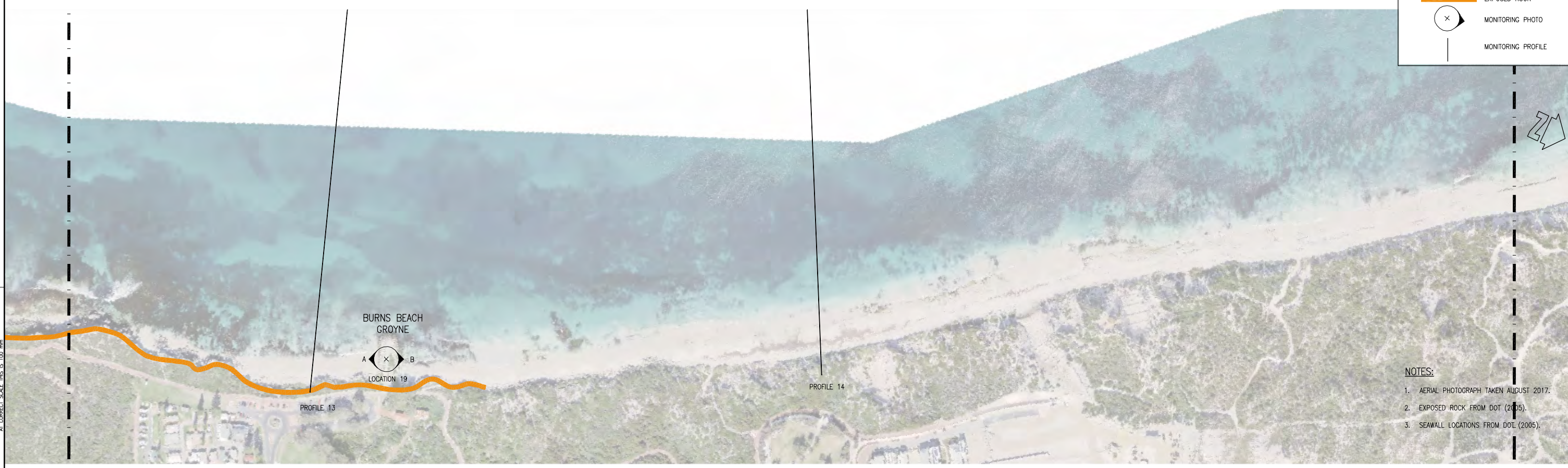
PROJECT	JOONDALUP COASTAL MONITORING		
TITLE	SHORELINE MOVEMENT PLAN OCEAN REEF		
SCALE AT A1	1:2,000	DRAWING NUMBER	D1477-02-04
REV	A		

AT CORRECT SCALE THIS IS 100 mm



**LEGEND:**

- SEAWALL
- EXPOSED ROCK
- MONITORING PHOTO
- MONITORING PROFILE



- NOTES:**
1. AERIAL PHOTOGRAPH TAKEN AUGUST 2017.
  2. EXPOSED ROCK FROM DOT (2005).
  3. SEAWALL LOCATIONS FROM DOT (2005).

CAD: D14770205A

REV	DATE	APPROVED	AMENDMENT
A	11.12.17	TSH	PRELIMINARY ISSUE

**COPYRIGHT**  
The concepts and information contained in this document are the Copyright of m p rogers & associates. Use or copying of the document in whole or part without the written permission of m p rogers & associates constitutes an infringement of copyright.

This plan is not to be used for construction unless issued as Rev 0 and signed below

CLIENT CITY OF JOONDALUP		
DESIGNED	CHECKED	APPROVED
DRAWN R. BORJA	CHECKED T. HUNT	

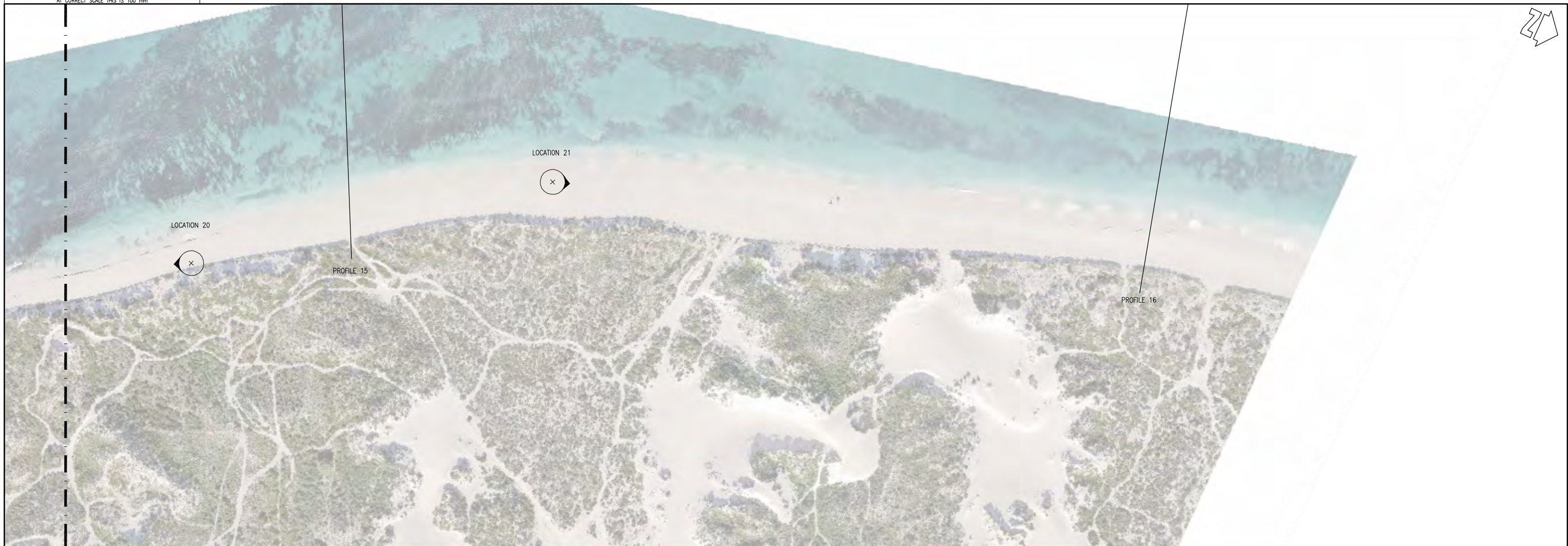
**m p rogers & associates pl**  
coastal and port engineers

Suite 1, 128 Main Street  
Osborne Park 6017  
Western Australia





t: +61 8 9254 6600  
f: +61 8 9254 6699  
admin@coastsandports.com.au

PROJECT	JOONDALUP COASTAL MONITORING
TITLE	PHOTO & SURVEY LOCATION PLAN ILUKA TO BURNS BEACH
SCALE AT A1	1:2,000
DRAWING NUMBER	D1477-02-05
REV	A

AT CORRECT SCALE THIS IS 100 mm



**LEGEND:**

-  SEAWALL
-  EXPOSED ROCK
-  MONITORING PHOTO
-  MONITORING PROFILE

**NOTES:**

1. AERIAL PHOTOGRAPH TAKEN AUGUST 2017.
2. EXPOSED ROCK FROM DOT (2005).
3. SEAWALL LOCATIONS FROM DOT (2005).

CAD: D14770206A

				<b>COPYRIGHT</b>				The concepts and information contained in this document are the Copyright of m p rogers & associates. Use or copying of the document in whole or part without the written permission of m p rogers & associates constitutes an infringement of copyright.				CLIENT CITY OF JOONDALUP				<b>m p rogers &amp; associates pl</b> coastal and port engineers Suite 1, 128 Main Street      t: +61 8 9254 6600 Osborne Park 6017          f: +61 8 9254 6699 Western Australia          admin@coastsandports.com.au				PROJECT JOONDALUP COASTAL MONITORING			
				This plan is not to be used for construction unless issued as Rev 0 and signed below								DESIGNED R. BORJA								CHECKED T. HUNT			
A 11.12.17 TSH PRELIMINARY ISSUE																SCALE AT A1 1:2,000      DRAWING NUMBER D1477-02-06      REV A							
REV	DATE	APPROVED	AMENDMENT	REV	DATE	APPROVED	AMENDMENT																

AT CORRECT SCALE THIS IS 100 mm