

WASTE MANAGEMENT PLAN

62 BANKS AVENUE HILLARYS

TABLE OF CONTENTS

1 INTRODUCTION

2 WASTE PROVISIONS

3 WASTE MANAGEMENT

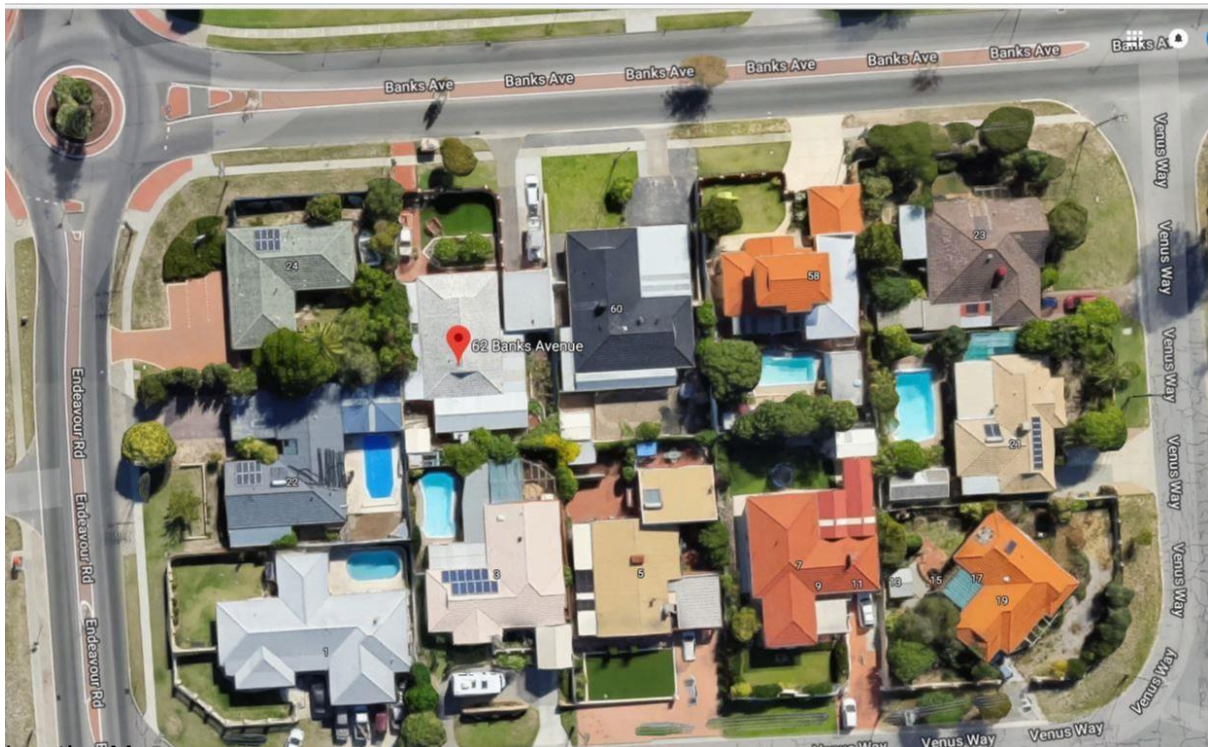
4 BIN STORAGE MANAGEMENT

1 INTRODUCTION

The City of Joondalup requires the submission of a Waste Management Plan as a condition for the development application at 281 Banks Avenue Hillarys. The development consists of eight Residential units.

The typology of the Residential units is as follows:

- 2 - 3 Bedroom with 2 Bathrooms
- 4 - 2 Bedrooms with 2 Bathrooms
- 2 – 1 Bedroom with 1 Bathroom



Location Map

2. WASTE PROVISIONS

The following waste is generated according to WALGA Multiple Dwelling Waste Management Plan Guidelines.

TYOLOGY	No. OF APARTMENTS	WASTE GENERATION RATE (L/week)	TOTAL WASTE (L/week)
GENERAL WASTE			
ONE BEDROOM	2	80	160
TWO BEDROOMS	4	110	440
THREE BEDROOMS	2	140	280
		TOTAL	880
RECYCLED WASTE			
ONE BEDROOM	2	40	80
TWO BEDROOMS	4	80	320
THREE BEDROOMS	2	240	480
		TOTAL	880

It is recommended to use 3x240L and 1x140L bins for the weekly waste collection and 2x360L and 1x240L bins for the fortnightly recycle collection.

3. WASTE MANAGEMENT

The general and recycled waste collection will be undertaken by the City of Joondalup.

General waste will be collected weekly and recycled waste fortnightly

The collection vehicle will collect the bins from the verge on Banks avenue. The strata manager will cart the bins to the verge collection point from the bin area.

4. BIN STORAGE MANAGEMENT

The Bin storage will be in the car parking area. The Bin store will provide easy access to the residential tenants via the lift.

The materials and finishes to the Bin store will be concrete floors. A Tap will be provided for wash down purposes.

It is expected that the Bin store will generate the minimum noise transfer to the tenants and adjoining properties.

The following will be implemented to minimise odours:

- Screening of the bin storage area.
- Natural ventilation.
- Solid construction
- Regular washing of bins and storage area.