

Appendix A Shoreline Movement Plan

CITY OF JOONDALUP

SHORELINE MOVEMENT PLAN - AERIAL VEGETATION MAPPING

DRAWING No.	TITLE
D1698-01-01	MARMION TO SORRENTO
D1698-01-02	HILLARYS TO WHITFORDS
D1698-01-03	WHITFORDS TO MULLALOO
D1698-01-04	OCEAN REEF
D1698-01-05	ILUKA TO BURNS BEACH
D1698-01-06	BURNS BEACH

GENERAL NOTES:

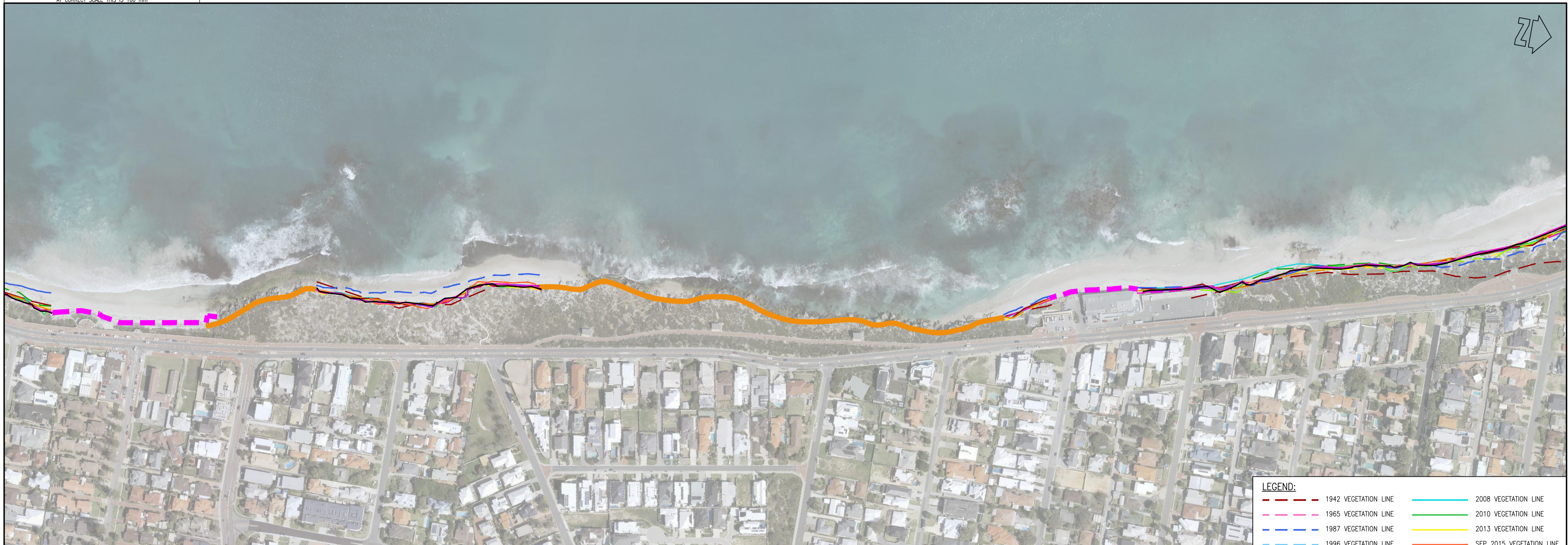
1. AERIAL PHOTOGRAPH PROVIDED BY CITY OF JOONDALUP TAKEN AUGUST 2019.
2. VEGETATION LINES OBTAINED FROM MRA DATABASE.
3. EXPOSED ROCK FROM DOT (2005).
4. SEAWALL LOCATIONS FROM DOT (2005).



AT CORRECT SCALE THIS IS 100 mm

CAD: D16980100B

				<p>COPYRIGHT</p> <p>The concepts and information contained in this document are the Copyright of m.p. rogers & associates. Use or copying of the document in whole or part without the written permission of m.p. rogers & associates constitutes an infringement of copyright.</p>		<p>This plan is not to be used for construction unless issued as Rev 0 and signed below</p>		<p>CLIENT CITY OF JOONDALUP</p>		<p>m p rogers & associates pl coastal and port engineers</p> <p>Suite 1, 128 Main Street t: +61 8 9254 6600 Osborne Park 6017 f: +61 8 9254 6699 Western Australia admin@coastsandports.com.au</p>		<p>PROJECT JOONDALUP COASTAL MONITORING</p>													
<table border="1"> <thead> <tr> <th>REV</th> <th>DATE</th> <th>APPROVED</th> <th>AMENDMENT</th> </tr> </thead> <tbody> <tr> <td>B</td> <td>28.05.20</td> <td>TSH</td> <td>UPDATED & REISSUED</td> </tr> <tr> <td>A</td> <td>10.12.19</td> <td>TSH</td> <td>PRELIMINARY ISSUE</td> </tr> </tbody> </table>				REV	DATE	APPROVED	AMENDMENT	B	28.05.20	TSH	UPDATED & REISSUED	A	10.12.19	TSH	PRELIMINARY ISSUE							<p>TITLE SHORELINE MOVEMENT PLAN DRAWING LIST & SHEET LAYOUT</p>		<p>SCALE AT A1 NTS</p>	
REV	DATE	APPROVED	AMENDMENT																						
B	28.05.20	TSH	UPDATED & REISSUED																						
A	10.12.19	TSH	PRELIMINARY ISSUE																						
										<p>DRAWING NUMBER D1698-01-00</p>		<p>REV B</p>													



LEGEND:

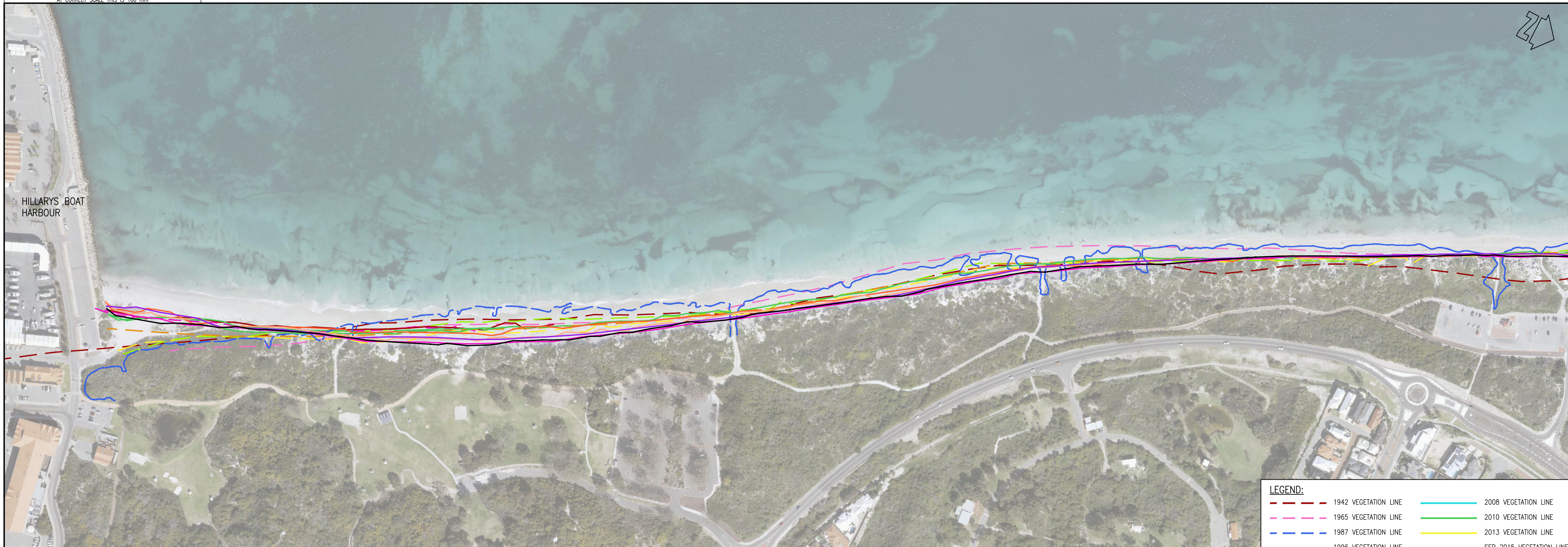
--- 1942 VEGETATION LINE	--- 2008 VEGETATION LINE
--- 1965 VEGETATION LINE	--- 2010 VEGETATION LINE
--- 1987 VEGETATION LINE	--- 2013 VEGETATION LINE
--- 1996 VEGETATION LINE	--- SEP 2015 VEGETATION LINE
--- 2000 VEGETATION LINE	--- AUG 2016 VEGETATION LINE
--- 2002 VEGETATION LINE	--- AUG 2017 VEGETATION LINE
--- 2003 VEGETATION LINE	--- AUG 2018 VEGETATION LINE
--- 2004 VEGETATION LINE	--- AUG 2019 VEGETATION LINE
--- 2005 VEGETATION LINE	--- SEAWALL
--- 2006 VEGETATION LINE	--- EXPOSED ROCK



HILLARYS BOAT HARBOUR

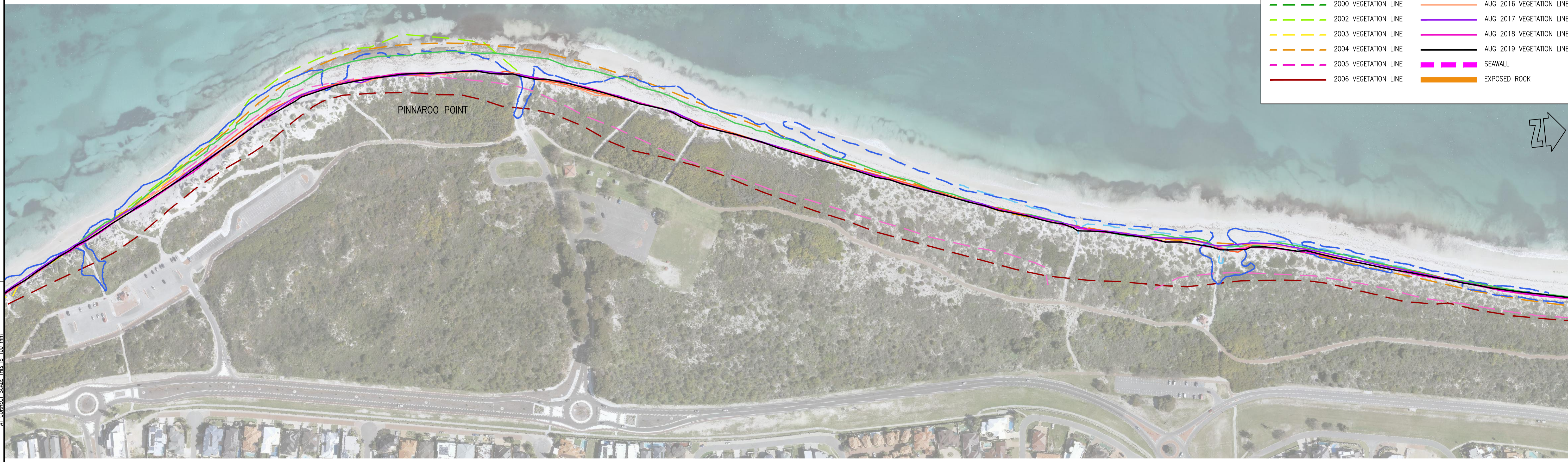
CAD: D16980101B

				<p>COPYRIGHT</p> <p>The concepts and information contained in this document are the Copyright of m p rogers & associates. Use or copying of the document in whole or part without the written permission of m p rogers & associates constitutes an infringement of copyright.</p>				<p>CLIENT CITY OF JOONDALUP</p>				<p>m p rogers & associates pl coastal and port engineers</p> <p>Suite 1, 128 Main Street Osborne Park 6017 Western Australia</p> <p>t: +61 8 9254 6600 f: +61 8 9254 6699 admin@coastsandports.com.au</p>				<p>PROJECT JOONDALUP COASTAL MONITORING</p>			
<p>B 28.05.20 TSH UPDATED & REISSUED</p>								<p>DESIGNED R. BORJA</p>				<p>TITLE SHORELINE MOVEMENT PLAN MARMION TO SORRENTO</p>							
<p>A 10.12.19 TSH PRELIMINARY ISSUE</p>								<p>CHECKED T. HUNT</p>				<p>SCALE AT A1 1:2,000</p>							
<p>REV DATE APPROVED AMENDMENT</p>				<p>REV DATE APPROVED AMENDMENT</p>				<p>APPROVED</p>				<p>DRAWING NUMBER D1698-01-01</p>							
												<p>REV B</p>							



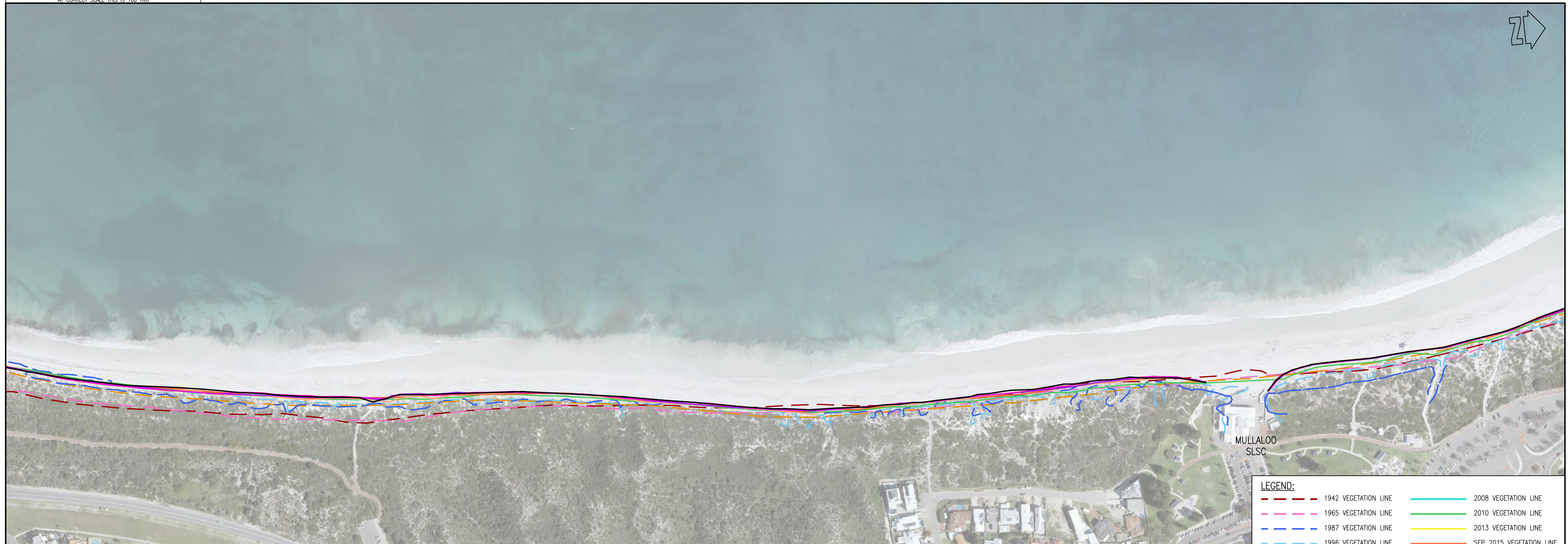
LEGEND:

--- 1942 VEGETATION LINE	--- 2008 VEGETATION LINE
--- 1965 VEGETATION LINE	--- 2010 VEGETATION LINE
--- 1987 VEGETATION LINE	--- 2013 VEGETATION LINE
--- 1996 VEGETATION LINE	--- SEP 2015 VEGETATION LINE
--- 2000 VEGETATION LINE	--- AUG 2016 VEGETATION LINE
--- 2002 VEGETATION LINE	--- AUG 2017 VEGETATION LINE
--- 2003 VEGETATION LINE	--- AUG 2018 VEGETATION LINE
--- 2004 VEGETATION LINE	--- AUG 2019 VEGETATION LINE
--- 2005 VEGETATION LINE	--- SEAWALL
--- 2006 VEGETATION LINE	--- EXPOSED ROCK



CAD: D16980102B

				<p>COPYRIGHT</p> <p>The concepts and information contained in this document are the Copyright of m p rogers & associates. Use or copying of the document in whole or part without the written permission of m p rogers & associates constitutes an infringement of copyright.</p>				<p>CLIENT CITY OF JOONDALUP</p>				<p>m p rogers & associates pl coastal and port engineers</p> <p>Suite 1, 128 Main Street Osborne Park 6017 Western Australia</p> <p>t: +61 8 9254 6600 f: +61 8 9254 6699 admin@coastsandports.com.au</p>				<p>PROJECT JOONDALUP COASTAL MONITORING</p>			
<p>B 28.05.20 TSH UPDATED & REISSUED</p>								<p>DESIGNED R. BORJA</p>				<p>TITLE SHORELINE MOVEMENT PLAN HILLARYS TO WHITFORDS</p>							
<p>A 10.12.19 TSH PRELIMINARY ISSUE</p>								<p>CHECKED T. HUNT</p>				<p>SCALE AT A1 1:2,000</p>							
REV	DATE	APPROVED	AMENDMENT	REV	DATE	APPROVED	AMENDMENT					DRAWING NUMBER D1698-01-02	REV B						



LEGEND:

1942 VEGETATION LINE	2008 VEGETATION LINE
1965 VEGETATION LINE	2010 VEGETATION LINE
1987 VEGETATION LINE	2013 VEGETATION LINE
1996 VEGETATION LINE	SEP 2015 VEGETATION LINE
2000 VEGETATION LINE	AUG 2016 VEGETATION LINE
2002 VEGETATION LINE	AUG 2017 VEGETATION LINE
2003 VEGETATION LINE	AUG 2018 VEGETATION LINE
2004 VEGETATION LINE	AUG 2019 VEGETATION LINE
2005 VEGETATION LINE	SEAWALL
2006 VEGETATION LINE	EXPOSED ROCK



CAD: D16980103B

				<p>COPYRIGHT</p> <p>The concepts and information contained in this document are the Copyright of m p rogers & associates. Use or copying of the document in whole or part without the written permission of m p rogers & associates constitutes an infringement of copyright.</p>				<p>CLIENT</p> <p>CITY OF JOONDALUP</p>				<p>m p rogers & associates pl coastal and port engineers</p> <p>Suite 1, 128 Main Street Osborne Park 6017 Western Australia</p> <p>t: +61 8 9254 6600 f: +61 8 9254 6699 admin@coastsandports.com.au</p>				<p>PROJECT</p> <p>JOONDALUP COASTAL MONITORING</p>			
<p>B 28.05.20 TSH UPDATED & REISSUED</p>								<p>DESIGNED</p> <p>R. BORJA</p>				<p>CHECKED</p> <p>T. HUNT</p>				<p>APPROVED</p>			
<p>A 10.12.19 TSH PRELIMINARY ISSUE</p>																			
REV	DATE	APPROVED	AMENDMENT	REV	DATE	APPROVED	AMENDMENT					<p>TITLE</p> <p>SHORELINE MOVEMENT PLAN WHITFORDS TO MULLALOO</p>							
												<p>SCALE AT A1</p> <p>1:2,000</p>							
												<p>DRAWING NUMBER</p> <p>D1698-01-03</p>							
												<p>REV</p> <p>B</p>							



LEGEND:

1942 VEGETATION LINE	2008 VEGETATION LINE
1965 VEGETATION LINE	2010 VEGETATION LINE
1987 VEGETATION LINE	2013 VEGETATION LINE
1996 VEGETATION LINE	SEP 2015 VEGETATION LINE
2000 VEGETATION LINE	AUG 2016 VEGETATION LINE
2002 VEGETATION LINE	AUG 2017 VEGETATION LINE
2003 VEGETATION LINE	AUG 2018 VEGETATION LINE
2004 VEGETATION LINE	AUG 2019 VEGETATION LINE
2005 VEGETATION LINE	SEAWALL
2006 VEGETATION LINE	EXPOSED ROCK



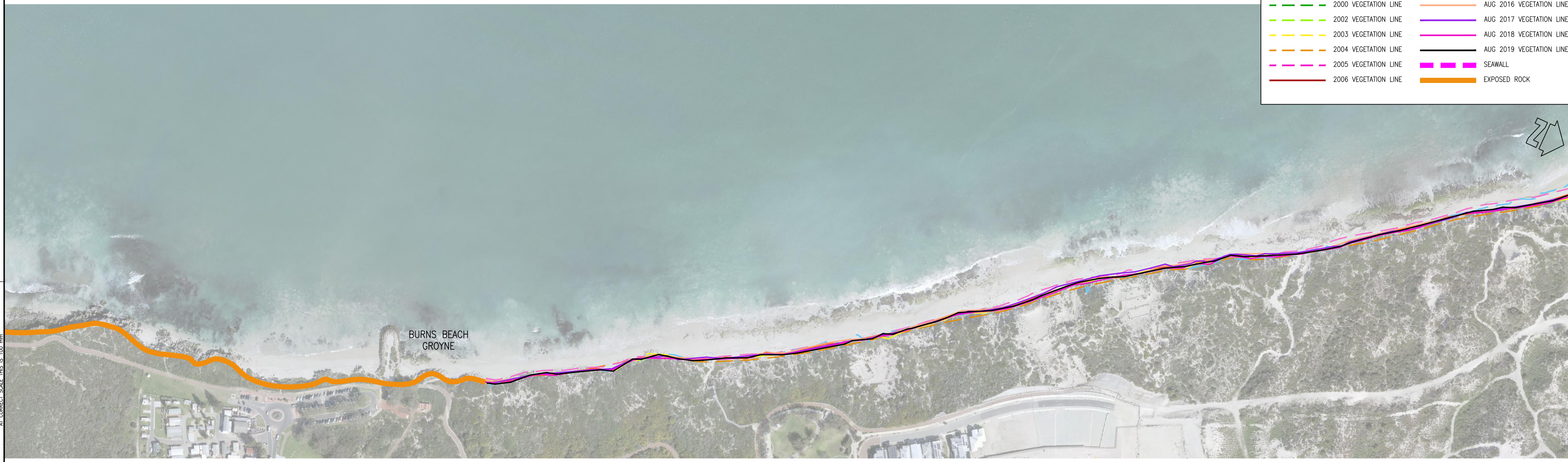
CAD: D16980104B

				<p>COPYRIGHT</p> <p>The concepts and information contained in this document are the Copyright of m p rogers & associates. Use or copying of the document in whole or part without the written permission of m p rogers & associates constitutes an infringement of copyright.</p>				<p>CLIENT CITY OF JOONDALUP</p>				<p>m p rogers & associates pl coastal and port engineers</p> <p>Suite 1, 128 Main Street Osborne Park 6017 Western Australia</p> <p>t: +61 8 9254 6600 f: +61 8 9254 6699 admin@coastsandports.com.au</p>				<p>PROJECT JOONDALUP COASTAL MONITORING</p> <p>TITLE SHORELINE MOVEMENT PLAN OCEAN REEF</p>			
B	28.05.20	TSH	UPDATED & REISSUED					DESIGNED	CHECKED	APPROVED		SCALE AT A1	1:2,000	DRAWING NUMBER	D1698-01-04	REV	B		
A	10.12.19	TSH	PRELIMINARY ISSUE					DRAWN	CHECKED										
REV	DATE	APPROVED	AMENDMENT	REV	DATE	APPROVED	AMENDMENT	R. BORJA	T. HUNT										



LEGEND:

1942 VEGETATION LINE	2008 VEGETATION LINE
1965 VEGETATION LINE	2010 VEGETATION LINE
1987 VEGETATION LINE	2013 VEGETATION LINE
1996 VEGETATION LINE	SEP 2015 VEGETATION LINE
2000 VEGETATION LINE	AUG 2016 VEGETATION LINE
2002 VEGETATION LINE	AUG 2017 VEGETATION LINE
2003 VEGETATION LINE	AUG 2018 VEGETATION LINE
2004 VEGETATION LINE	AUG 2019 VEGETATION LINE
2005 VEGETATION LINE	SEAWALL
2006 VEGETATION LINE	EXPOSED ROCK



CAD: D16980105B

				<p>COPYRIGHT</p> <p>The concepts and information contained in this document are the Copyright of m p rogers & associates. Use or copying of the document in whole or part without the written permission of m p rogers & associates constitutes an infringement of copyright.</p>				<p>CLIENT</p> <p>CITY OF JOONDALUP</p>				<p>m p rogers & associates pl coastal and port engineers</p> <p>Suite 1, 128 Main Street Osborne Park 6017 Western Australia</p> <p>t: +61 8 9254 6600 f: +61 8 9254 6699 admin@coastsandports.com.au</p>				<p>PROJECT</p> <p>JOONDALUP COASTAL MONITORING</p>																	
<table border="1"> <tr> <th>REV</th> <th>DATE</th> <th>APPROVED</th> <th>AMENDMENT</th> </tr> <tr> <td>B</td> <td>28.05.20</td> <td>TSH</td> <td>UPDATED & REISSUED</td> </tr> <tr> <td>A</td> <td>10.12.19</td> <td>TSH</td> <td>PRELIMINARY ISSUE</td> </tr> </table>				REV	DATE	APPROVED	AMENDMENT	B	28.05.20	TSH	UPDATED & REISSUED	A	10.12.19	TSH	PRELIMINARY ISSUE	<p>This plan is not to be used for construction unless issued as Rev 0 and signed below</p>				<table border="1"> <tr> <th>DESIGNED</th> <th>CHECKED</th> <th>APPROVED</th> </tr> <tr> <td>R. BORJA</td> <td>T. HUNT</td> <td></td> </tr> </table>				DESIGNED	CHECKED	APPROVED	R. BORJA	T. HUNT		<p>TITLE</p> <p>SHORELINE MOVEMENT PLAN ILUKA TO BURNS BEACH</p>			
REV	DATE	APPROVED	AMENDMENT																														
B	28.05.20	TSH	UPDATED & REISSUED																														
A	10.12.19	TSH	PRELIMINARY ISSUE																														
DESIGNED	CHECKED	APPROVED																															
R. BORJA	T. HUNT																																
								<p>SCALE AT A1</p> <p>1:2,000</p>				<p>DRAWING NUMBER</p> <p>D1698-01-05</p>				<p>REV</p> <p>B</p>																	



LEGEND:

--- 1942 VEGETATION LINE	--- 2008 VEGETATION LINE
--- 1965 VEGETATION LINE	--- 2010 VEGETATION LINE
--- 1987 VEGETATION LINE	--- 2013 VEGETATION LINE
--- 1996 VEGETATION LINE	--- SEP 2015 VEGETATION LINE
--- 2000 VEGETATION LINE	--- AUG 2016 VEGETATION LINE
--- 2002 VEGETATION LINE	--- AUG 2017 VEGETATION LINE
--- 2003 VEGETATION LINE	--- AUG 2018 VEGETATION LINE
--- 2004 VEGETATION LINE	--- AUG 2019 VEGETATION LINE
--- 2005 VEGETATION LINE	--- SEAWALL
--- 2006 VEGETATION LINE	--- EXPOSED ROCK

CAD: D16980106B

				<p>COPYRIGHT</p> <p>The concepts and information contained in this document are the Copyright of m p rogers & associates. Use or copying of the document in whole or part without the written permission of m p rogers & associates constitutes an infringement of copyright.</p>				<p>This plan is not to be used for construction unless issued as Rev 0 and signed below</p>				<p>CLIENT CITY OF JOONDALUP</p>				<p>m p rogers & associates pl coastal and port engineers</p> <p>Suite 1, 128 Main Street t: +61 8 9254 6600 Osborne Park 6017 f: +61 8 9254 6699 Western Australia admin@coastsandports.com.au</p>				<p>PROJECT JOONDALUP COASTAL MONITORING</p>			
<table border="1"> <tr> <td>B</td> <td>28.05.20</td> <td>TSH</td> <td>UPDATED & REISSUED</td> </tr> <tr> <td>A</td> <td>10.12.19</td> <td>TSH</td> <td>PRELIMINARY ISSUE</td> </tr> </table>				B	28.05.20	TSH	UPDATED & REISSUED	A	10.12.19	TSH	PRELIMINARY ISSUE									<p>TITLE SHORELINE MOVEMENT PLAN BURNS BEACH</p>			
B	28.05.20	TSH	UPDATED & REISSUED																				
A	10.12.19	TSH	PRELIMINARY ISSUE																				
REV	DATE	APPROVED	AMENDMENT	REV	DATE	APPROVED	AMENDMENT	DESIGNED	CHECKED	APPROVED	SCALE AT A1	DRAWING NUMBER	REV										
								R. BORJA	T. HUNT		1:2,000	D1698-01-06	B										