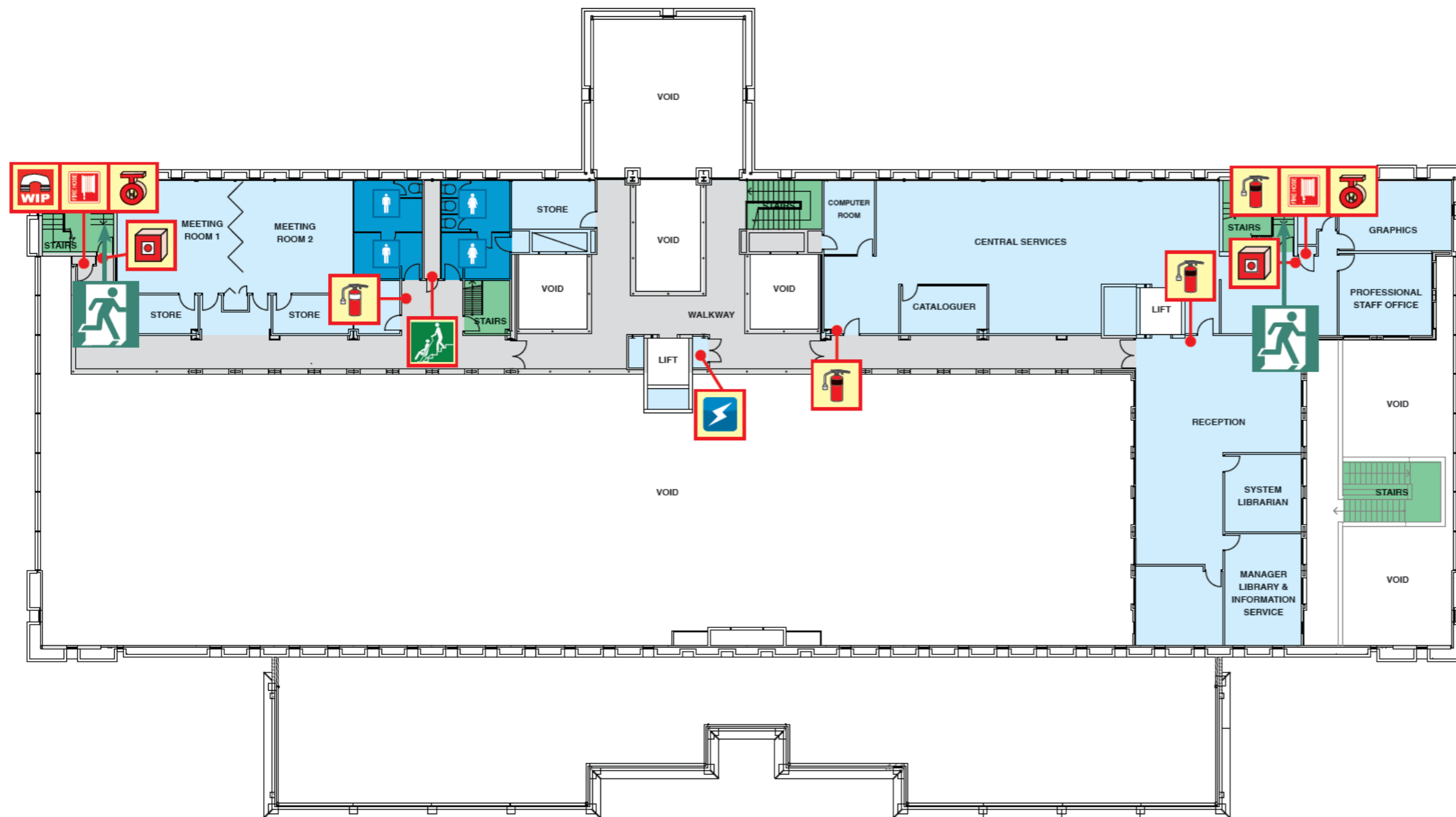


EVACUATION DIAGRAM



JOONDALUP PUBLIC LIBRARY LEVEL 1



LEGEND

	ASSEMBLY AREA
	EXIT ROUTE
	ELECTRICAL SWITCHBOARD
	DRY CHEMICAL POWDER
	CO ² CARBON DIOXIDE
	WARDEN INTERCOMMUNICATION PHONE
	BREAK GLASS ALARM
	FIRE HYDRANT
	FIRE HOSE
	EVACUATION CHAIR

FOR ALL EMERGENCY SERVICES
DIAL **000**

P POLICE

FIRE

AMBULANCE

102 BOAS AVENUE, JOONDALUP



ALARM PROCEDURES

STAGE 1 - ON HEARING THE ALERT TONE

BEEP...BEEP...BEEP

- Assess your immediate area for danger (DO NOT EVACUATE ON THIS TONE)
- Follow work shut-down procedures and secure your area. Lock away confidential files (if safe to do so)
- Follow instructions from Wardens

STAGE 2 - ON HEARING THE EVACUATION TONE

WHOOO...WHOOO...WHOOO

- Evacuate the building immediately via the nearest safe exit, closing all doors behind you
- DO NOT use the lifts
- Proceed to the Assembly Area (refer to Site Plan)
- DO NOT re-enter the building until authorised by the Emergency Services/Chef Warden

ALWAYS FOLLOW THE INSTRUCTIONS OF WARDENS/EMERGENCY SERVICES

EVACUATION DIAGRAM



JOONDALUP PUBLIC LIBRARY GROUND FLOOR



LEGEND

	ASSEMBLY AREA
	EXIT ROUTE
	FIRST AID
	DRY CHEMICAL POWDER
	CO ² CARBON DIOXIDE
	WARDEN INTERCOMMUNICATION PHONE
	BREAK GLASS ALARM
	FIRE HYDRANT
	FIRE HOSE
	DEFIBRILLATOR
	ELECTRICAL SWITCHBOARD
	FIRE INDICATOR PANEL
	EMERGENCY WARNING INTERCOMMUNICATION SYSTEM

FOR ALL EMERGENCY SERVICES
DIAL **000**

P POLICE

FIRE

AMBULANCE

102 BOAS AVENUE, JOONDALUP



ALARM PROCEDURES

STAGE 1 - ON HEARING THE ALERT TONE

BEEP...BEEP...BEEP

- Assess your immediate area for danger (DO NOT EVACUATE ON THIS TONE)
- Follow work shut-down procedures and secure your area. Lock away confidential files (if safe to do so)
- Follow instructions from Wardens

STAGE 2 - ON HEARING THE EVACUATION TONE

WHOOO...WHOOO...WHOOO

- Evacuate the building immediately via the nearest safe exit, closing all doors behind you
- DO NOT use the lifts
- Proceed to the Assembly Area (refer to Site Plan)
- DO NOT re-enter the building until authorised by the Emergency Services/Chef Warden

ALWAYS FOLLOW THE INSTRUCTIONS OF WARDENS/EMERGENCY SERVICES

EVACUATION DIAGRAM



JOONDALUP PUBLIC LIBRARY BASEMENT



LEGEND

	ASSEMBLY AREA
	EXIT ROUTE
	DRY CHEMICAL POWDER
	CO ² CARBON DIOXIDE
	WARDEN INTERCOMMUNICATION PHONE
	BREAK GLASS ALARM
	FIRE HYDRANT
	FIRE HOSE

FOR ALL EMERGENCY SERVICES DIAL **000**

P POLICE

FIRE

AMBULANCE

102 BOAS AVENUE, JOONDALUP



ALARM PROCEDURES

STAGE 1 - ON HEARING THE ALERT TONE

BEEP...BEEP...BEEP

- Assess your immediate area for danger (DO NOT EVACUATE ON THIS TONE)
- Follow work shut-down procedures and secure your area. Lock away confidential files (if safe to do so)
- Follow instructions from Wardens

STAGE 2 - ON HEARING THE EVACUATION TONE

WHOOO...WHOOO...WHOOO

- Evacuate the building immediately via the nearest safe exit, closing all doors behind you
- DO NOT use the lifts
- Proceed to the Assembly Area (refer to Site Plan)
- DO NOT re-enter the building until authorised by the Emergency Services/Chef Warden

ALWAYS FOLLOW THE INSTRUCTIONS OF WARDENS/EMERGENCY SERVICES