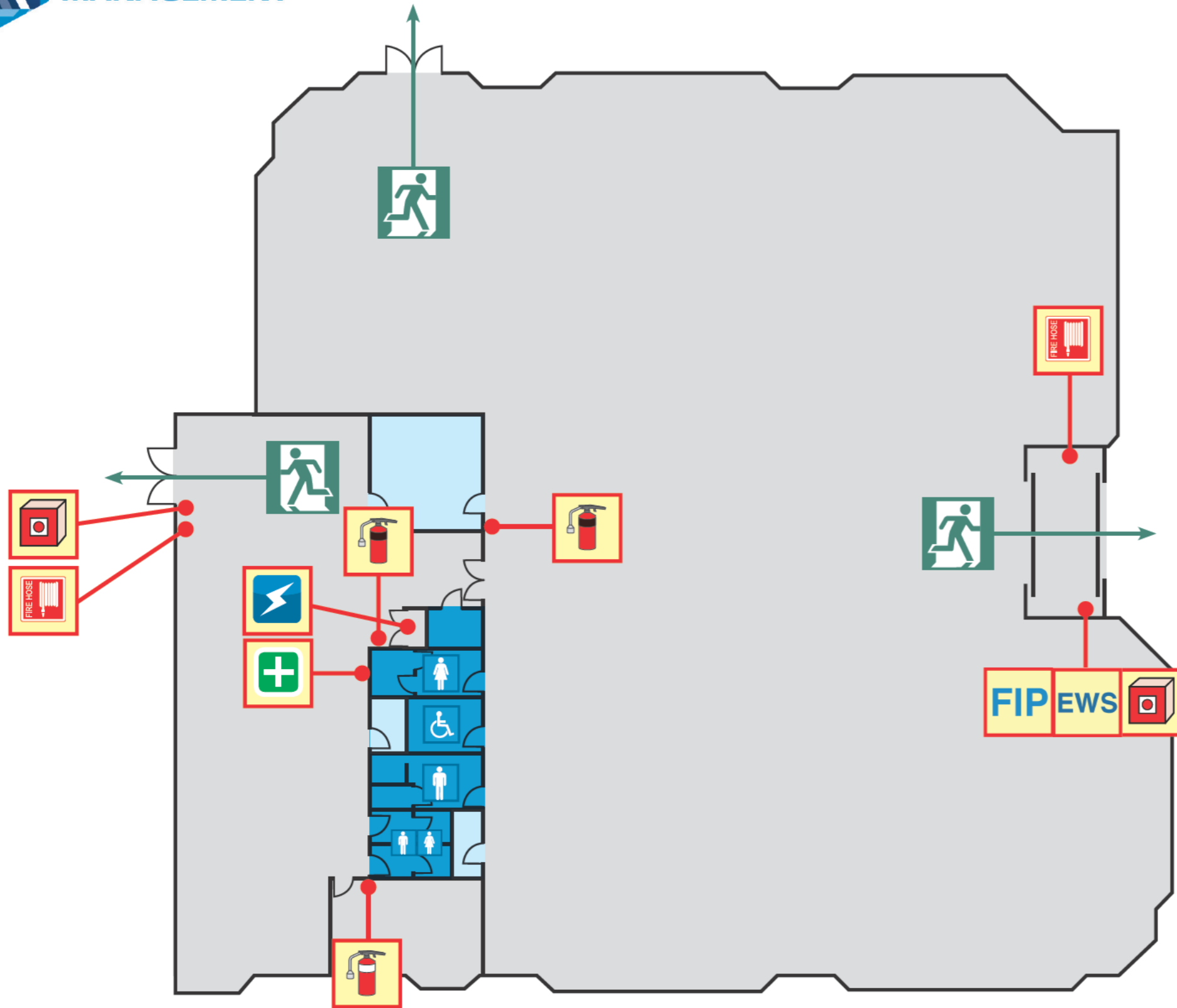


EVACUATION DIAGRAM



WOODVALE LIBRARY



LEGEND

	ASSEMBLY AREA
	EXIT ROUTE
	DRY CHEMICAL POWDER
	CO ² - CARBON DIOXIDE
	FIRE HOSE REEL
	ELECTRICAL SWITCHBOARD
	FIRST AID
	BREAK GLASS ALARM
	FIRE INDICATOR PANEL
	EMERGENCY WARNING SYSTEM

FOR ALL EMERGENCY SERVICES
DIAL 000

P POLICE

FIRE

AMBULANCE

5 TRAPPERS DRIVE, WOODVALE



ALARM PROCEDURES

- Assess your immediate area for danger.
- Secure cash, valuables, computers and equipment (if safe to do so).
- Evacuate the building via the nearest safe exit when instructed to do so (unless you are in immediate danger).
- Follow instructions from Wardens and proceed to your respective Assembly Area (refer to site plan).