

Appendix A Shoreline Movement Plan

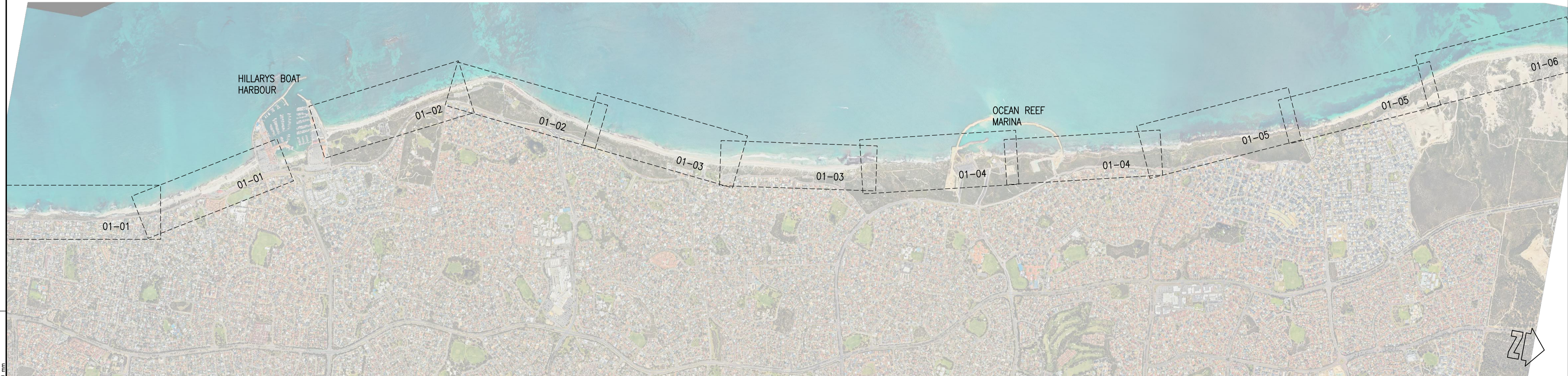
CITY OF JOONDALUP

SHORELINE MOVEMENT PLAN

DRAWING No.	TITLE
D1932-01-01	MARMION TO SORRENTO
D1932-01-02	HILLARYS TO WHITFORDS
D1932-01-03	WHITFORDS TO MULLALOO
D1932-01-04	OCEAN REEF
D1932-01-05	ILUKA TO BURNS BEACH
D1932-01-06	BURNS BEACH

GENERAL NOTES:

1. AERIAL PHOTOGRAPH PROVIDED BY CITY OF JOONDALUP TAKEN OCTOBER 2021.
2. VEGETATION LINES OBTAINED FROM MRA DATABASE.
3. EXPOSED ROCK FROM DOT (2005).
4. SEAWALL LOCATIONS FROM DOT (2005).



AT CORRECT SCALE THIS IS 100 mm

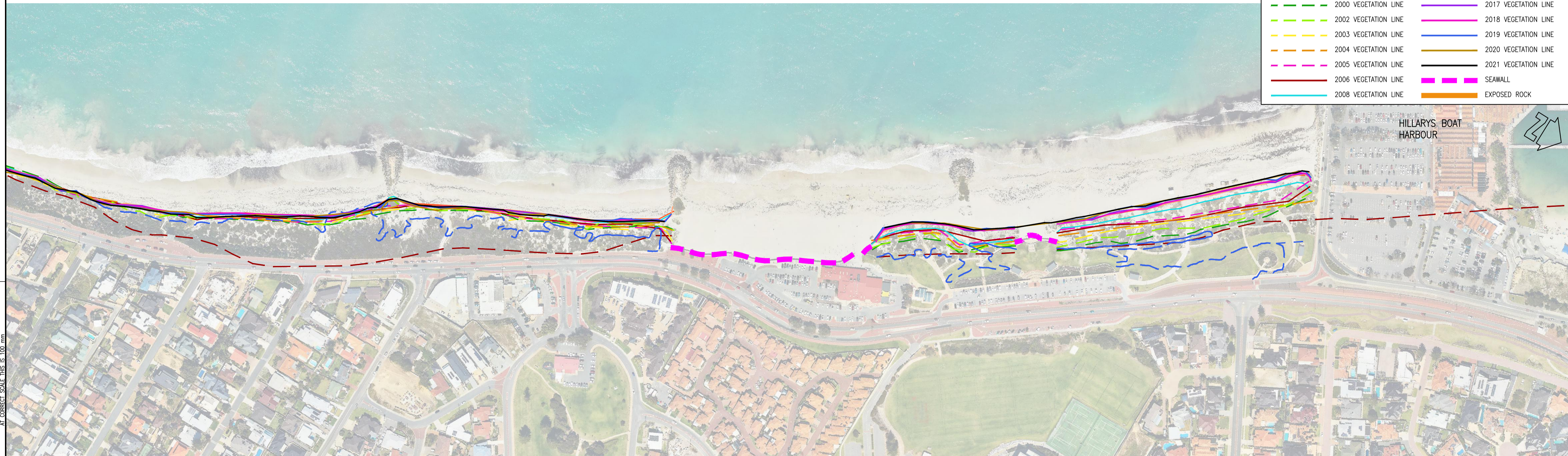
CAD: D19320100A

				<p>COPYRIGHT</p> <p>The concepts and information contained in this document are the Copyright of m.p. rogers & associates. Use or copying of the document in whole or part without the written permission of m.p. rogers & associates constitutes an infringement of copyright.</p>			<p>This plan is not to be used for construction unless issued as Rev 0 and signed below</p>			<p>CLIENT CITY OF JOONDALUP</p>			<p>m p rogers & associates pl coastal and port engineers</p> <p>Suite 1, 128 Main Street t: +61 8 9254 6600 Osborne Park 6017 f: +61 8 9254 6699 Western Australia admin@coastsandports.com.au</p>			<p>PROJECT JOONDALUP COASTAL MONITORING</p>		
<p>A 12.01.22 TSH PRELIMINARY ISSUE</p>										<p>TITLE SHORELINE MOVEMENT PLAN DRAWING LIST & SHEET LAYOUT</p>								
REV	DATE	APPROVED	AMENDMENT	REV	DATE	APPROVED	AMENDMENT	DESIGNED	CHECKED	APPROVED	SCALE AT A1	NTS	DRAWING NUMBER	D1932-01-00	REV	A		
								K. WORTH	T. HUNT									



LEGEND:

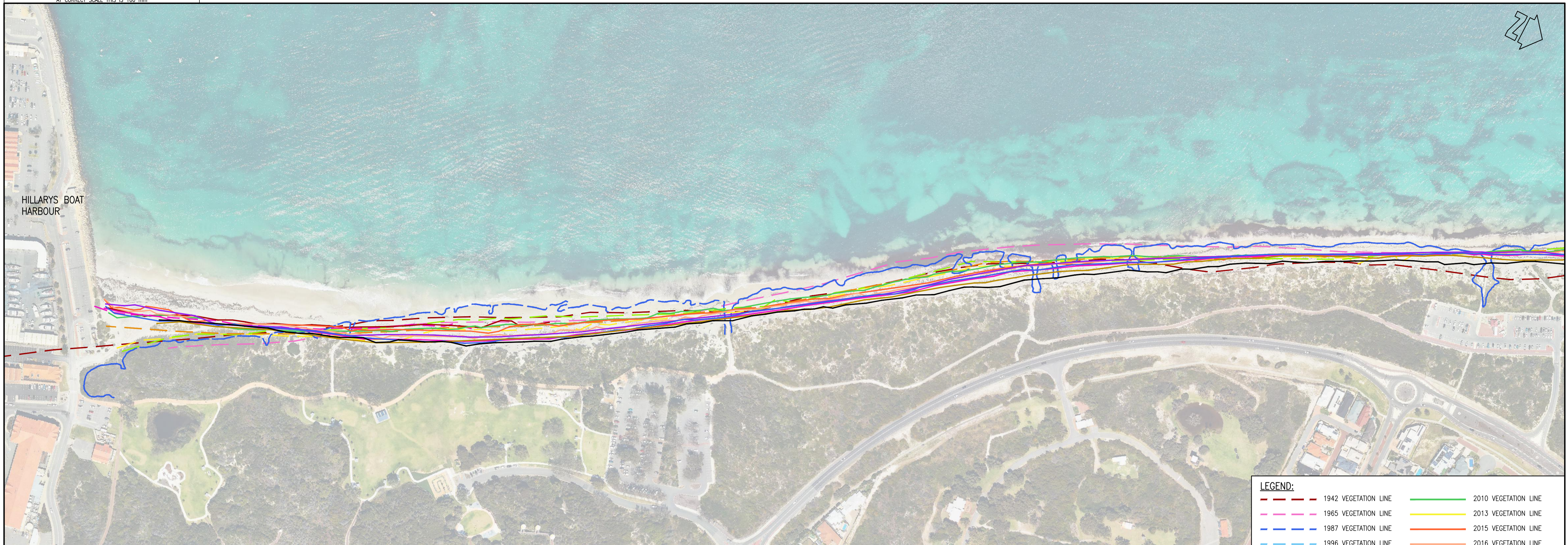
--- 1942 VEGETATION LINE	--- 2010 VEGETATION LINE
--- 1965 VEGETATION LINE	--- 2013 VEGETATION LINE
--- 1987 VEGETATION LINE	--- 2015 VEGETATION LINE
--- 1996 VEGETATION LINE	--- 2016 VEGETATION LINE
--- 2000 VEGETATION LINE	--- 2017 VEGETATION LINE
--- 2002 VEGETATION LINE	--- 2018 VEGETATION LINE
--- 2003 VEGETATION LINE	--- 2019 VEGETATION LINE
--- 2004 VEGETATION LINE	--- 2020 VEGETATION LINE
--- 2005 VEGETATION LINE	--- 2021 VEGETATION LINE
--- 2006 VEGETATION LINE	--- SEAWALL
--- 2008 VEGETATION LINE	--- EXPOSED ROCK



CAD: D19320101A

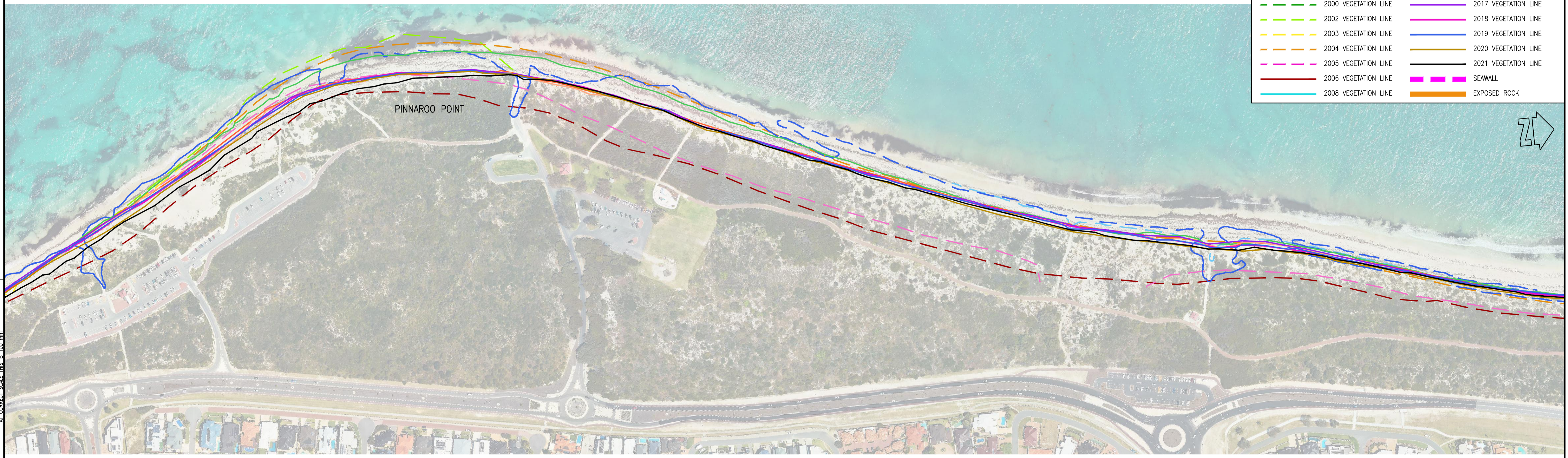
				<p>COPYRIGHT</p> <p>The concepts and information contained in this document are the Copyright of m p rogers & associates. Use or copying of the document in whole or part without the written permission of m p rogers & associates constitutes an infringement of copyright.</p>				<p>CLIENT CITY OF JOONDALUP</p>				<p>m p rogers & associates pl coastal and port engineers</p> <p>Suite 1, 128 Main Street Osborne Park 6017 Western Australia</p> <p>t: +61 8 9254 6600 f: +61 8 9254 6699 admin@coastsandports.com.au</p>				<p>PROJECT JOONDALUP COASTAL MONITORING</p>							
<p>A 12.01.22 TSH PRELIMINARY ISSUE</p>								<p>DESIGNED K. WORTH</p>				<p>CHECKED T. HUNT</p>				<p>APPROVED</p>				<p>TITLE SHORELINE MOVEMENT PLAN MARMION TO SORRENTO</p>			
REV	DATE	APPROVED	AMENDMENT	REV	DATE	APPROVED	AMENDMENT	SCALE AT A1	1:2,000	DRAWING NUMBER	D1932-01-01	REV	A										

AT CORRECT SCALE THIS IS 100 mm



LEGEND:

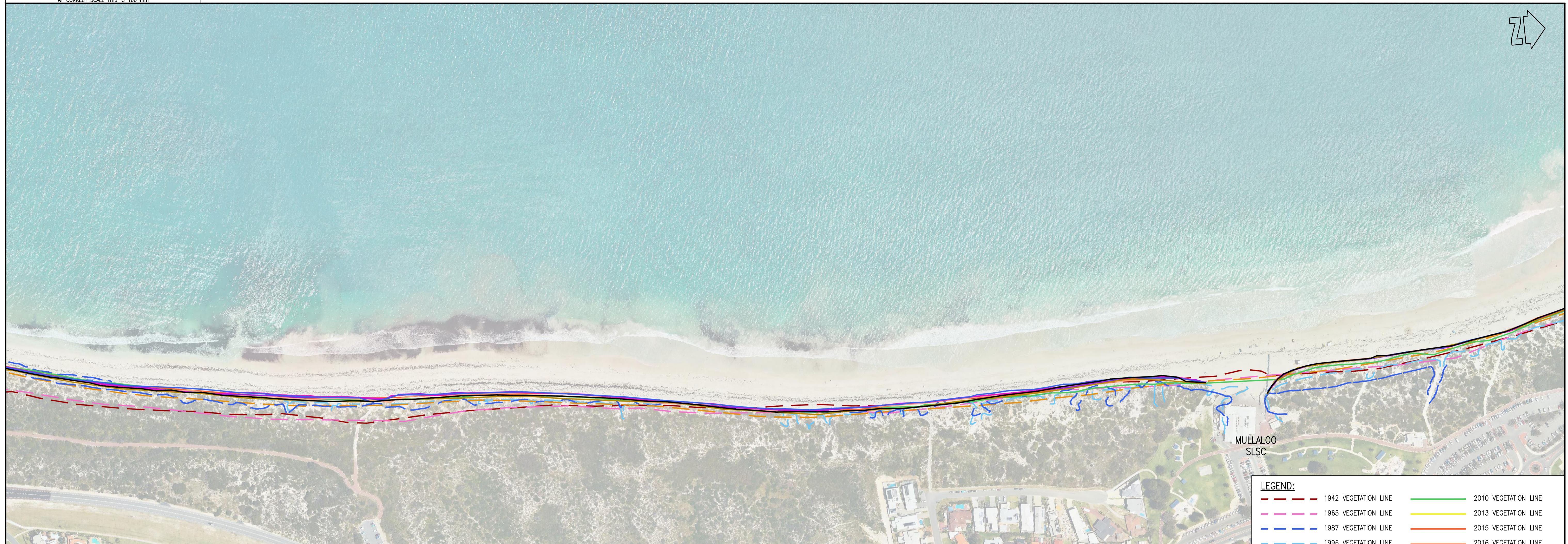
1942 VEGETATION LINE	2010 VEGETATION LINE
1965 VEGETATION LINE	2013 VEGETATION LINE
1987 VEGETATION LINE	2015 VEGETATION LINE
1996 VEGETATION LINE	2016 VEGETATION LINE
2000 VEGETATION LINE	2017 VEGETATION LINE
2002 VEGETATION LINE	2018 VEGETATION LINE
2003 VEGETATION LINE	2019 VEGETATION LINE
2004 VEGETATION LINE	2020 VEGETATION LINE
2005 VEGETATION LINE	2021 VEGETATION LINE
2006 VEGETATION LINE	SEAWALL
2008 VEGETATION LINE	EXPOSED ROCK



AT CORRECT SCALE THIS IS 100 mm

CAD: D19320102A

				<p>COPYRIGHT</p> <p>The concepts and information contained in this document are the Copyright of m p rogers & associates. Use or copying of the document in whole or part without the written permission of m p rogers & associates constitutes an infringement of copyright.</p>		<p>This plan is not to be used for construction unless issued as Rev 0 and signed below</p>		<p>CLIENT CITY OF JOONDALUP</p>		<p>m p rogers & associates pl coastal and port engineers</p> <p>Suite 1, 128 Main Street Osborne Park 6017 Western Australia</p> <p>t: +61 8 9254 6600 f: +61 8 9254 6699 admin@coastsandports.com.au</p>		<p>PROJECT JOONDALUP COASTAL MONITORING</p>	
<p>A 12.01.22 TSH PRELIMINARY ISSUE</p>										<p>TITLE SHORELINE MOVEMENT PLAN HILLARYS BEACH PARK TO WHITFORDS</p>		<p>SCALE AT A1 1:2,000</p>	
REV	DATE	APPROVED	AMENDMENT	REV	DATE	APPROVED	AMENDMENT	DESIGNED	CHECKED	APPROVED	DRAWN	CHECKED	DRAWING NUMBER D1932-01-02
								K. WORTH	T. HUNT				REV A



LEGEND:

1942 VEGETATION LINE	2010 VEGETATION LINE
1965 VEGETATION LINE	2013 VEGETATION LINE
1987 VEGETATION LINE	2015 VEGETATION LINE
1996 VEGETATION LINE	2016 VEGETATION LINE
2000 VEGETATION LINE	2017 VEGETATION LINE
2002 VEGETATION LINE	2018 VEGETATION LINE
2003 VEGETATION LINE	2019 VEGETATION LINE
2004 VEGETATION LINE	2020 VEGETATION LINE
2005 VEGETATION LINE	2021 VEGETATION LINE
2006 VEGETATION LINE	SEAWALL
2008 VEGETATION LINE	EXPOSED ROCK



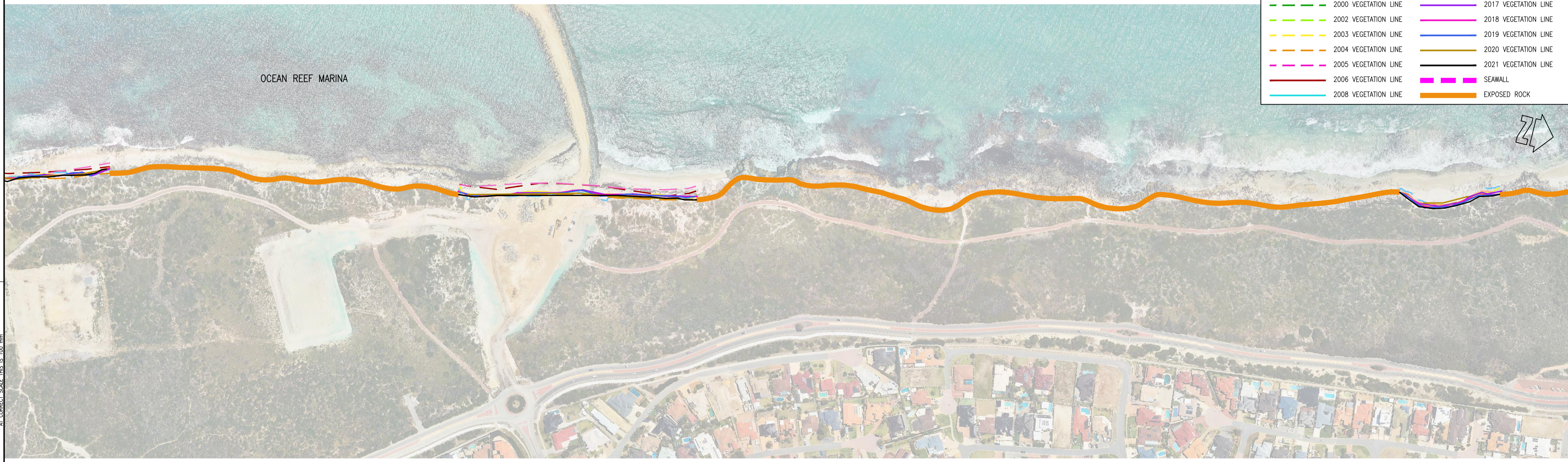
CAD: D19320103A

				<p>COPYRIGHT</p> <p>The concepts and information contained in this document are the Copyright of m p rogers & associates. Use or copying of the document in whole or part without the written permission of m p rogers & associates constitutes an infringement of copyright.</p>				<p>CLIENT</p> <p>CITY OF JOONDALUP</p>				<p>m p rogers & associates pl coastal and port engineers</p> <p>Suite 1, 128 Main Street Osborne Park 6017 Western Australia</p> <p>t: +61 8 9254 6600 f: +61 8 9254 6699 admin@coastsandports.com.au</p>				<p>PROJECT</p> <p>JOONDALUP COASTAL MONITORING</p>													
				<p>This plan is not to be used for construction unless issued as Rev 0 and signed below</p>								<p>TITLE</p> <p>SHORELINE MOVEMENT PLAN WHITFORDS TO MULLALOO</p>																	
<table border="1"> <tr> <td>REV</td> <td>DATE</td> <td>APPROVED</td> <td>AMENDMENT</td> </tr> <tr> <td>A</td> <td>12.01.22</td> <td>TSH</td> <td>PRELIMINARY ISSUE</td> </tr> </table>				REV	DATE	APPROVED	AMENDMENT	A	12.01.22	TSH	PRELIMINARY ISSUE					<table border="1"> <tr> <td>DESIGNED</td> <td>CHECKED</td> <td>APPROVED</td> </tr> <tr> <td>K. WORTH</td> <td>T. HUNT</td> <td></td> </tr> </table>				DESIGNED	CHECKED	APPROVED	K. WORTH	T. HUNT		<p>SCALE AT A1: 1:2,000</p>			
REV	DATE	APPROVED	AMENDMENT																										
A	12.01.22	TSH	PRELIMINARY ISSUE																										
DESIGNED	CHECKED	APPROVED																											
K. WORTH	T. HUNT																												
												<p>DRAWING NUMBER: D1932-01-03</p>																	
												<p>REV: A</p>																	



LEGEND:

1942 VEGETATION LINE	2010 VEGETATION LINE
1965 VEGETATION LINE	2013 VEGETATION LINE
1987 VEGETATION LINE	2015 VEGETATION LINE
1996 VEGETATION LINE	2016 VEGETATION LINE
2000 VEGETATION LINE	2017 VEGETATION LINE
2002 VEGETATION LINE	2018 VEGETATION LINE
2003 VEGETATION LINE	2019 VEGETATION LINE
2004 VEGETATION LINE	2020 VEGETATION LINE
2005 VEGETATION LINE	2021 VEGETATION LINE
2006 VEGETATION LINE	SEAWALL
2008 VEGETATION LINE	EXPOSED ROCK



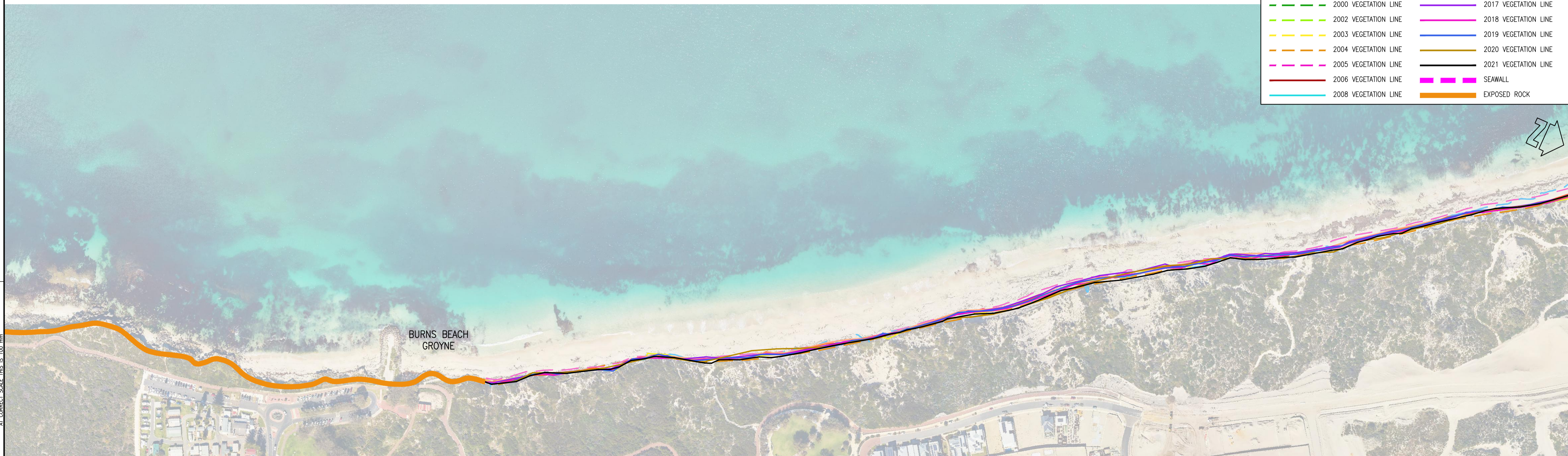
CAD: D19320104A

				<p>COPYRIGHT</p> <p>The concepts and information contained in this document are the Copyright of m p rogers & associates. Use or copying of the document in whole or part without the written permission of m p rogers & associates constitutes an infringement of copyright.</p>				<p>This plan is not to be used for construction unless issued as Rev 0 and signed below</p>				<p>CLIENT CITY OF JOONDALUP</p>				<p>m p rogers & associates pl coastal and port engineers</p> <p>Suite 1, 128 Main Street Osborne Park 6017 Western Australia</p> <p>t: +61 8 9254 6600 f: +61 8 9254 6699 admin@coastsandports.com.au</p>				<p>PROJECT JOONDALUP COASTAL MONITORING</p>			
<p>A 12.01.22 TSH PRELIMINARY ISSUE</p>												<p>TITLE SHORELINE MOVEMENT PLAN OCEAN REEF</p>											
REV	DATE	APPROVED	AMENDMENT	REV	DATE	APPROVED	AMENDMENT	DESIGNED	CHECKED	APPROVED	SCALE AT A1	DRAWING NUMBER	REV										
								K. WORTH	T. HUNT		1:2,000	D1932-01-04	A										



LEGEND:

1942 VEGETATION LINE	2010 VEGETATION LINE
1965 VEGETATION LINE	2013 VEGETATION LINE
1987 VEGETATION LINE	2015 VEGETATION LINE
1996 VEGETATION LINE	2016 VEGETATION LINE
2000 VEGETATION LINE	2017 VEGETATION LINE
2002 VEGETATION LINE	2018 VEGETATION LINE
2003 VEGETATION LINE	2019 VEGETATION LINE
2004 VEGETATION LINE	2020 VEGETATION LINE
2005 VEGETATION LINE	2021 VEGETATION LINE
2006 VEGETATION LINE	SEAWALL
2008 VEGETATION LINE	EXPOSED ROCK



CAD: D19320105A

REV	DATE	APPROVED	AMENDMENT
A	12.01.22	TSH	PRELIMINARY ISSUE

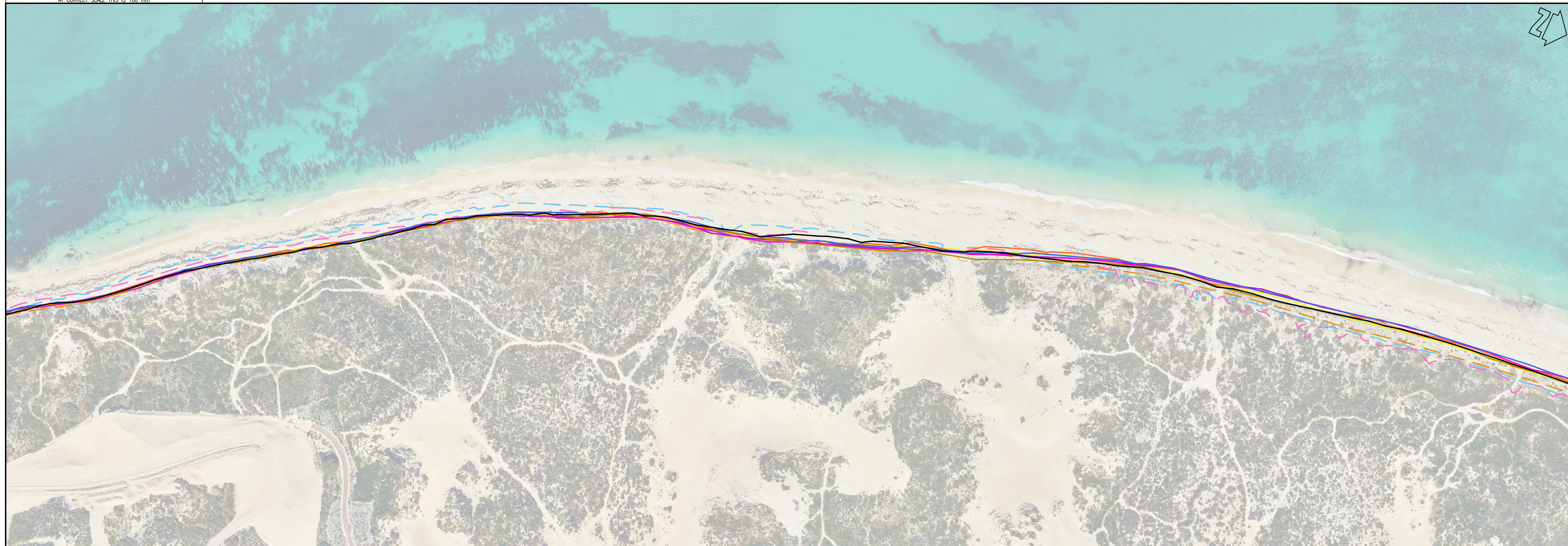
COPYRIGHT
The concepts and information contained in this document are the Copyright of m p rogers & associates. Use or copying of the document in whole or part without the written permission of m p rogers & associates constitutes an infringement of copyright.

This plan is not to be used for construction unless issued as Rev 0 and signed below

CLIENT CITY OF JOONDALUP		
DESIGNED	CHECKED	APPROVED
DRAWN K. WORTH	CHECKED T. HUNT	

m p rogers & associates pl
coastal and port engineers
Suite 1, 128 Main Street
Osborne Park 6017
Western Australia
t: +61 8 9254 6600
f: +61 8 9254 6699
admin@coastsandports.com.au

PROJECT	JOONDALUP COASTAL MONITORING		
TITLE	SHORELINE MOVEMENT PLAN ILUKA TO BURNS BEACH		
SCALE AT A1	1:2,000	DRAWING NUMBER	D1932-01-05
REV	A		



LEGEND:	
--- 1942 VEGETATION LINE	— 2010 VEGETATION LINE
--- 1965 VEGETATION LINE	— 2013 VEGETATION LINE
--- 1987 VEGETATION LINE	— 2015 VEGETATION LINE
--- 1996 VEGETATION LINE	— 2016 VEGETATION LINE
--- 2000 VEGETATION LINE	— 2017 VEGETATION LINE
--- 2002 VEGETATION LINE	— 2018 VEGETATION LINE
--- 2003 VEGETATION LINE	— 2019 VEGETATION LINE
--- 2004 VEGETATION LINE	— 2020 VEGETATION LINE
--- 2005 VEGETATION LINE	— 2021 VEGETATION LINE
— 2006 VEGETATION LINE	— SEAWALL
— 2008 VEGETATION LINE	— EXPOSED ROCK

CAD: D19320106A

				<p>COPYRIGHT</p> <p>The concepts and information contained in this document are the Copyright of m p rogers & associates. Use or copying of the document in whole or part without the written permission of m p rogers & associates constitutes an infringement of copyright.</p>				<p>This plan is not to be used for construction unless issued as Rev 0 and signed below</p>				<p>CLIENT CITY OF JOONDALUP</p>				<p>m p rogers & associates pl coastal and port engineers</p> <p>Suite 1, 128 Main Street Osborne Park 6017 Western Australia</p> <p>t: +61 8 9254 6600 f: +61 8 9254 6699 admin@coastsandports.com.au</p>				<p>PROJECT JOONDALUP COASTAL MONITORING</p> <p>TITLE SHORELINE MOVEMENT PLAN BURNS BEACH</p>			
A	12.01.22	TSH	PRELIMINARY ISSUE																				
REV	DATE	APPROVED	AMENDMENT	REV	DATE	APPROVED	AMENDMENT																