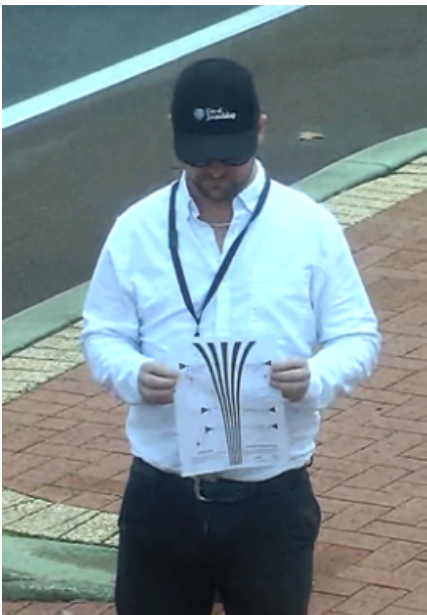


# CCTV Rebate Scheme

## Using the Facial Recognition Test Chart

Please familiarise yourself with the test chart instructions carefully.

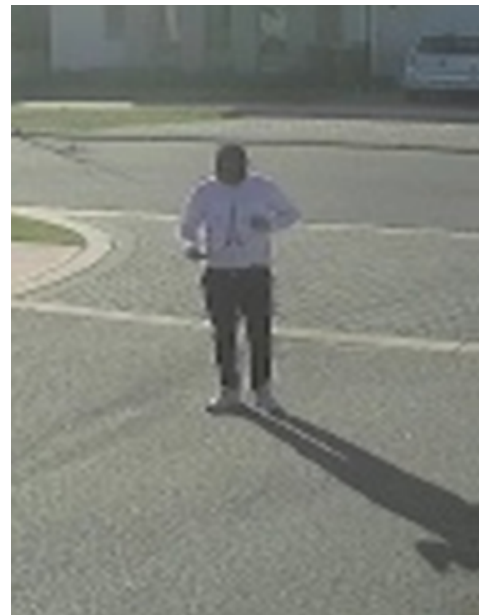
1. Ensure the CCTV systems is switched on and running.
2. Move to a public property area. Public property includes;
  - a. Footpaths
  - b. Roadways
  - c. Verges
  - d. Laneways
3. Hold the resolution test chart steady in the field of view of your public-facing camera for a period of five (5) seconds.
4. On your CCTV system, locate the recorded footage and export a screenshot of you holding the resolution test chart. Screenshots must be dated and time stamped.
5. Supply the screenshot as part of your CCTV rebate application.



**Example 1**



**Example 2**



**Example 3**

**Example 1** - Meets the 50% facial recognition requirements. Lines are clearly visible at the 8mm point.

**Example 2** - Does not meet the facial recognition requirements. The image is too far away, and the lines are not clearly distinguishable.

**Example 3** - Does not meet the facial recognition requirements. The image is low quality and lines are blurred.

