

LOT 39: 1026 m²

UNIT 2 OPEN SPACE CALCULATION	
HOUSE	: 116.01 m ²
GARAGE	: 32.60 m ²
STORAGE ROOM	: 4.94 m ²
TOTAL	: 153.55 m²

SITE AREA	: 234.45 m ²
COMMON PROPERTY	: 44.87 m ²
TOTAL	: 279.32 m²

OPEN SPACE	: 54.97 %

UNIT 3 OPEN SPACE CALCULATION:	
HOUSE	: 108.60 m ²
GARAGE	: 32.60 m ²
STORAGE ROOM	: 4.95 m ²
TOTAL	: 146.15 m²

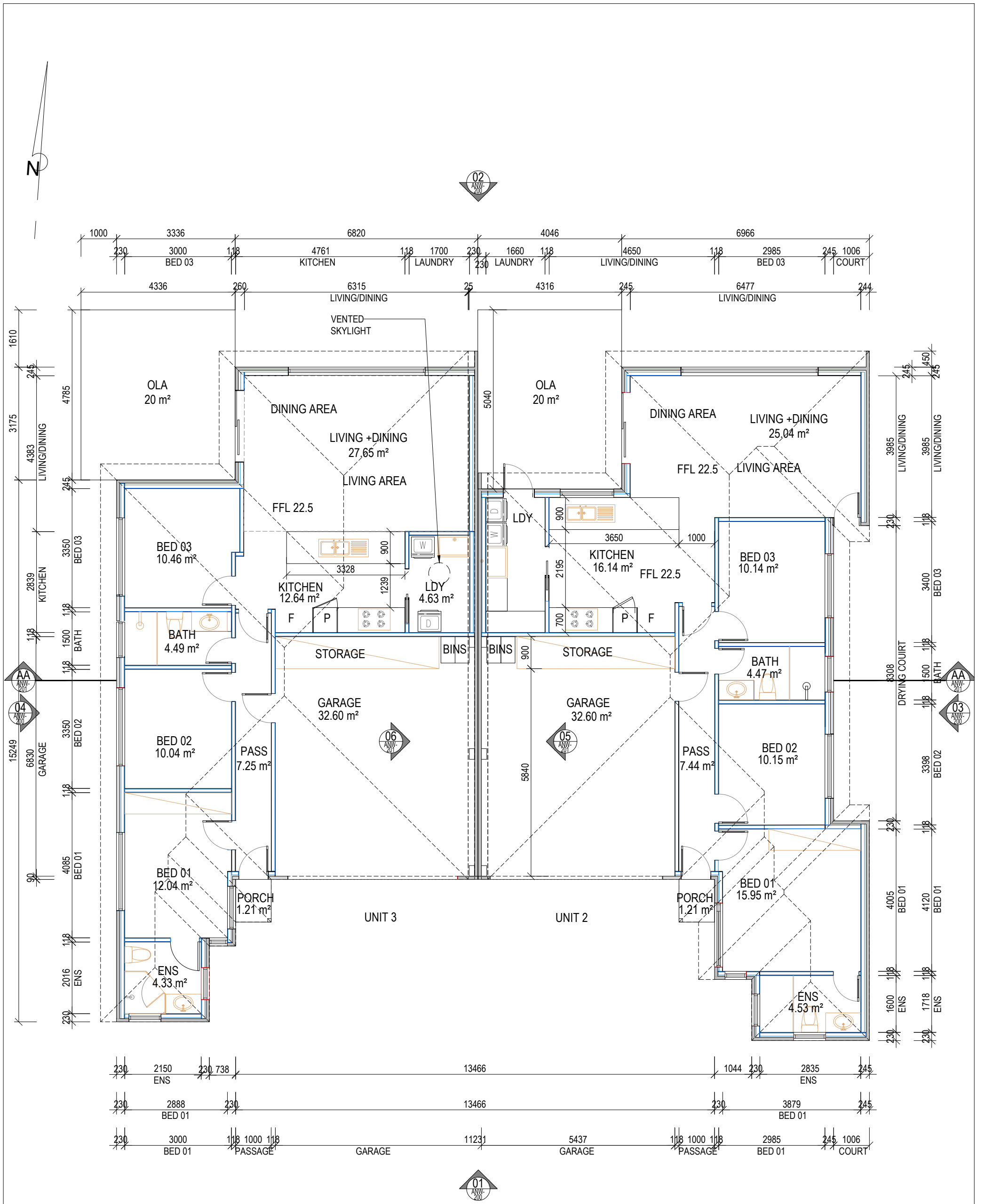
SITE AREA	: 222.51 m ²
COMMON PROPERTY	: 44.87 m ²
TOTAL	: 146.15 m²

OPEN SPACE	: 54.66 %

SITE PLAN
SCALE 1:200

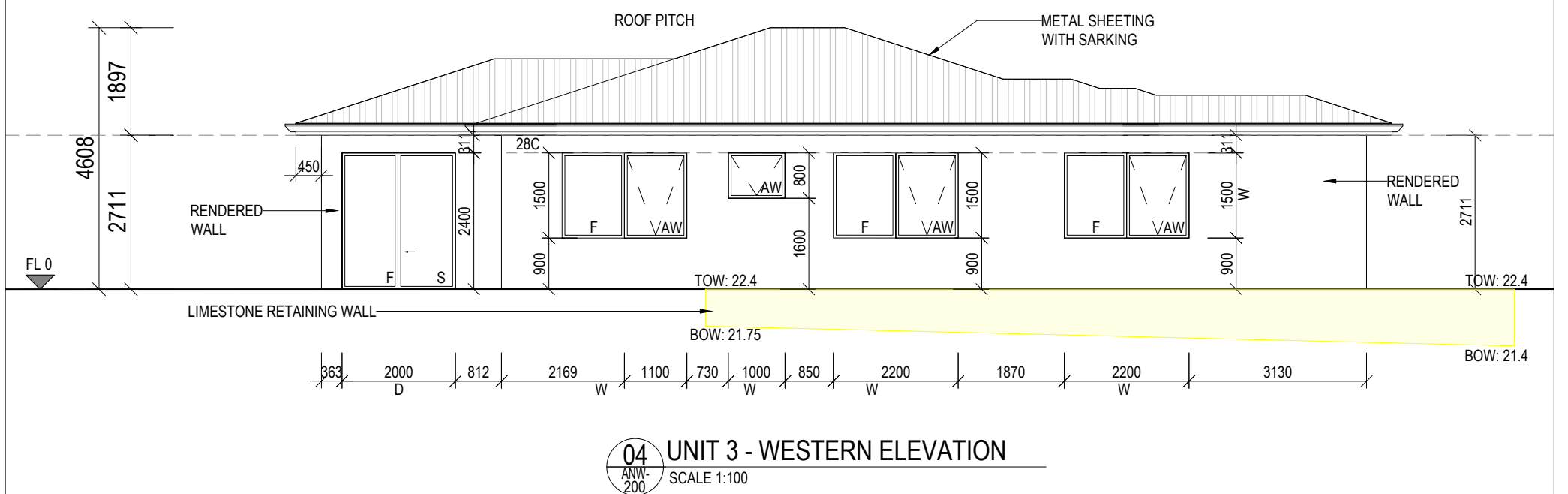
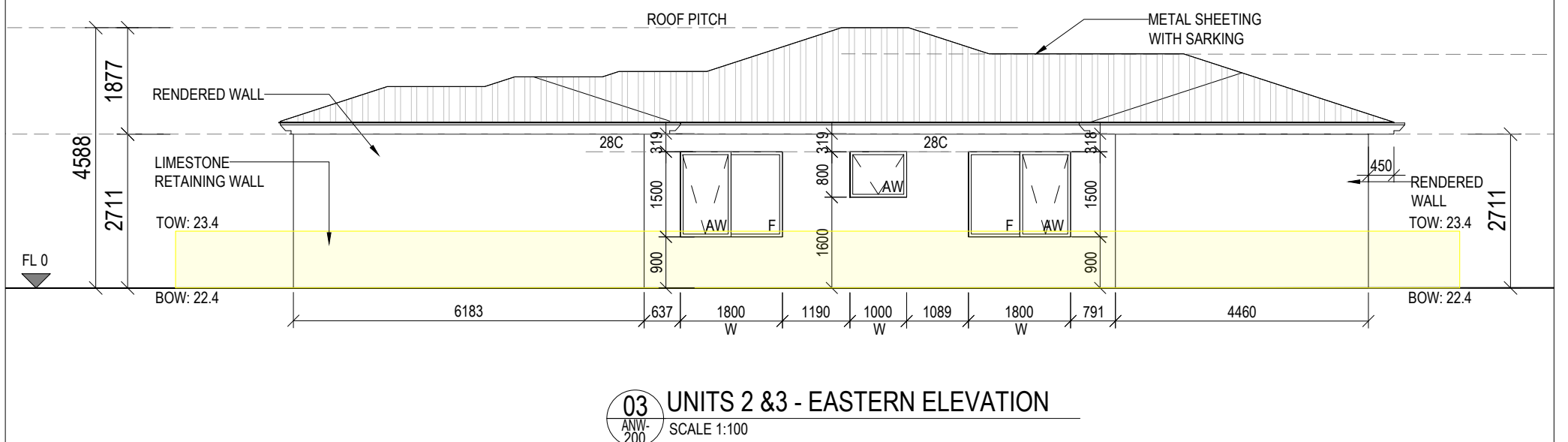
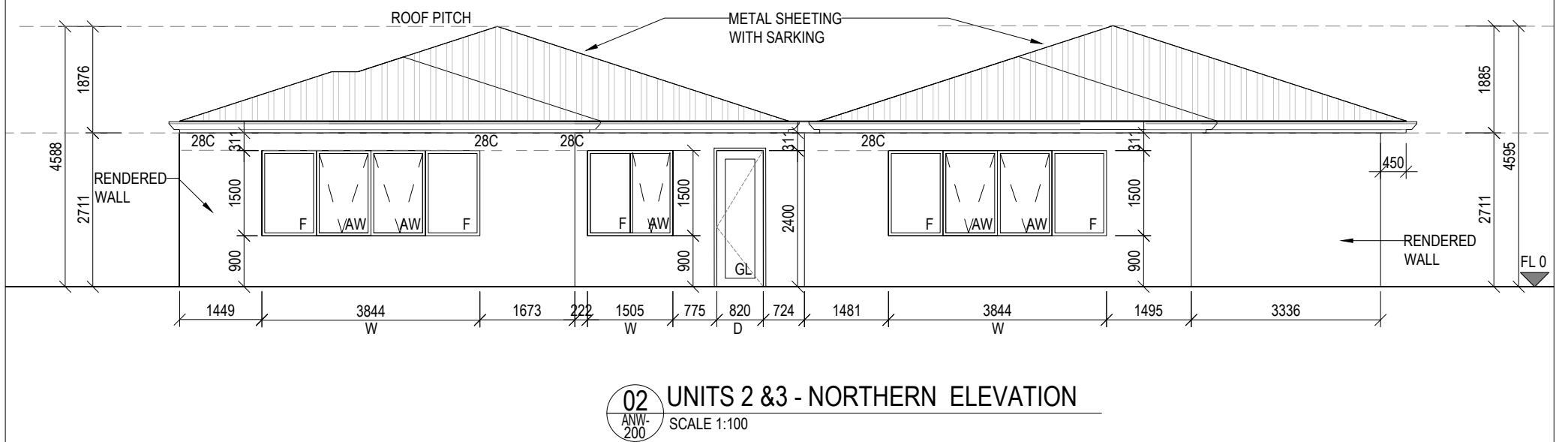
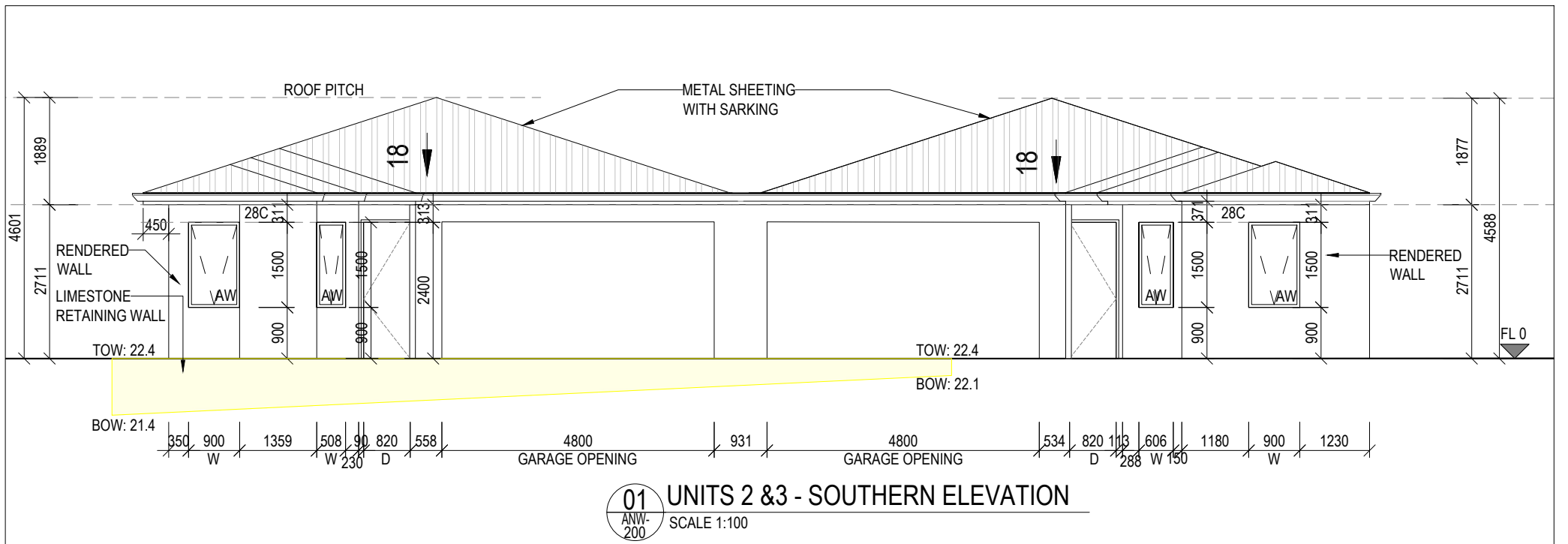
GENERAL NOTES	REV.	REVISION DESCRIPTION	DATE	APPD	PROJECT NAME	DOCUMENTED BY	DRAWING TITLE
					15 CAPRELLA HEATHRIDGE	anwest constructions	SITE PLAN
	C	ISSUED FOR INFORMATION	27/02/2024		PROJECT NO. -	58 Clavering Rd, Bayswater WA 6053	SCALE AS SHOWN
	B	ISSUED FOR INFORMATION	17/01/2024		CO-ORD	M: 0424 367 289	SHEET SIZE A3
	A	ISSUED FOR INFORMATION	06/12/2023		DRWN AD/AI	www.anwest.com.au	DWG STATUS ISSUED FOR INFORMATION
					CHK AJ		DWG NO. ANW_001
							SHEET OF REV 01 07 C


C:\Users\Anwest\Anthony Jones - 15 Caprella Street\20 Caprella\07 Design & Shop Detailing\00 CAD\Site Caprella - Unit 2-3\ANW_001[C] Site Plan Layout_Unit 2-3.dwg, Site

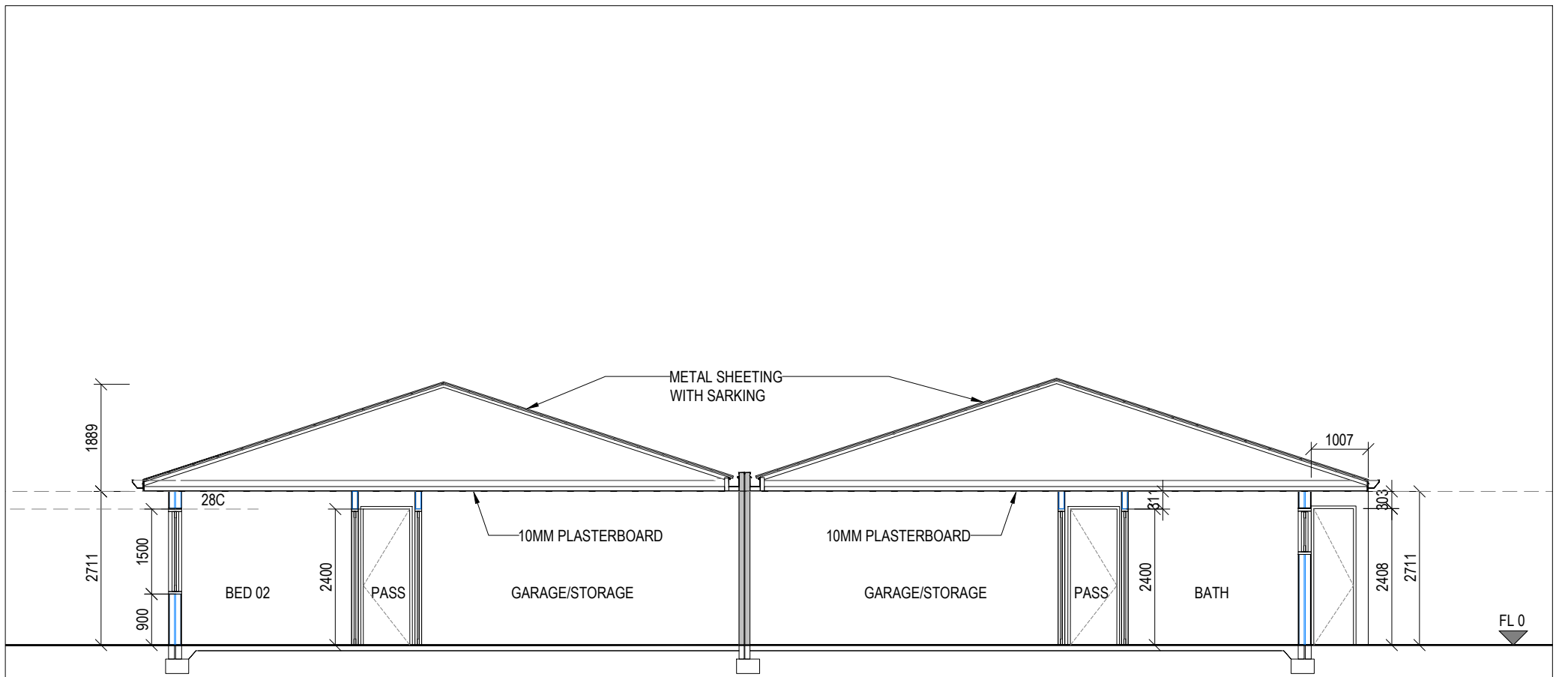


UNITS 2 & 3 - FLOOR PLAN
SCALE 1:100

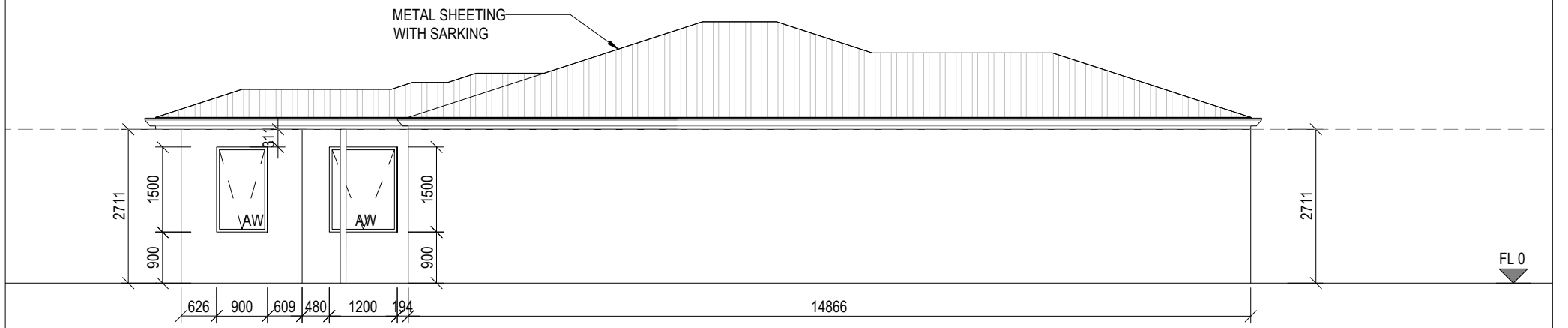
GENERAL NOTES	REV.	REVISION DESCRIPTION	DATE	APPD	PROJECT NAME	DOCUMENTED BY	DRAWING TITLE
					15 CAPRELLA HEATHRIDGE	anwest constructions	UNIT 2, 3 PLAN
	C	ISSUED FOR INFORMATION	22/02/2024		PROJECT NO. -	58 Clavering Rd, Bayswater WA 6053	SCALE AS SHOWN
	B	ISSUED FOR INFORMATION	17/01/2024		CO-ORD	M: 0424 367 289	DWG STATUS ISSUED FOR INFORMATION
	A	ISSUED FOR INFORMATION	06/12/2023		DRWN AD,AI	www.anwest.com.au	SHEET SIZE A3
					CHK AJ		DWG NO. ANW_100
							SHEET 05 OF 07
							REV C



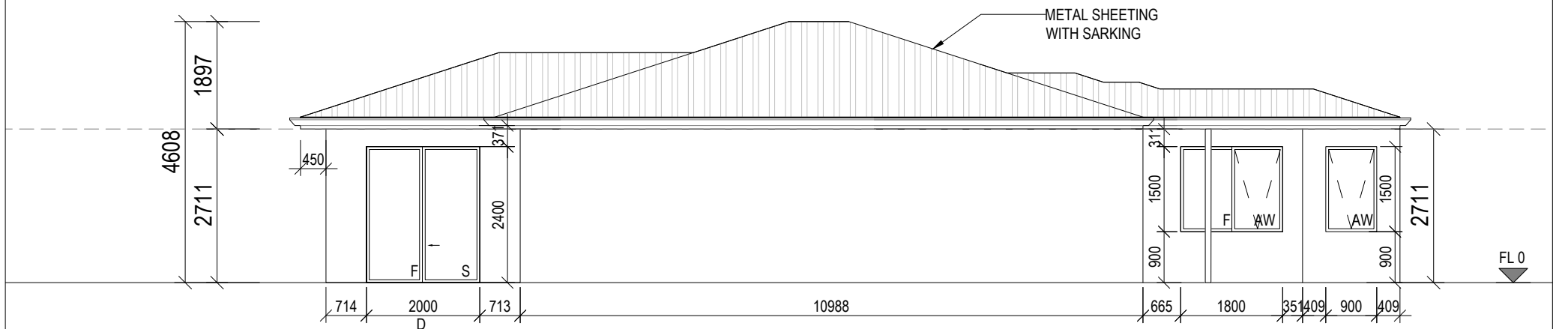
GENERAL NOTES	REV.	REVISION DESCRIPTION	DATE	APPD	PROJECT NAME	DOCUMENTED BY	DRAWING TITLE	
	C	ISSUED FOR INFORMATION	22/02/2024		15 CAPRELLA HEATHRIDGE		 58 Clavering Rd, Bayswater WA 6053 M: 0424 367 289 www.anwest.com.au	UNITS 2 & 3 ELEVATIONS
	B	ISSUED FOR INFORMATION	17/01/2024		PROJECT NO. -			DWG STATUS
	A	ISSUED FOR INFORMATION	06/12/2023		CO-ORD	DRWN AD,ALAI	CHKD AJ	ISSUED FOR INFORMATION
								SCALE
								AS SHOWN
								SHEET SIZE
								A3
								DWG NO.
								ANW_200
								SHEET OF
								06 OF 07
								REV
								C



AA SECTION
ANW-201 SCALE 1:100

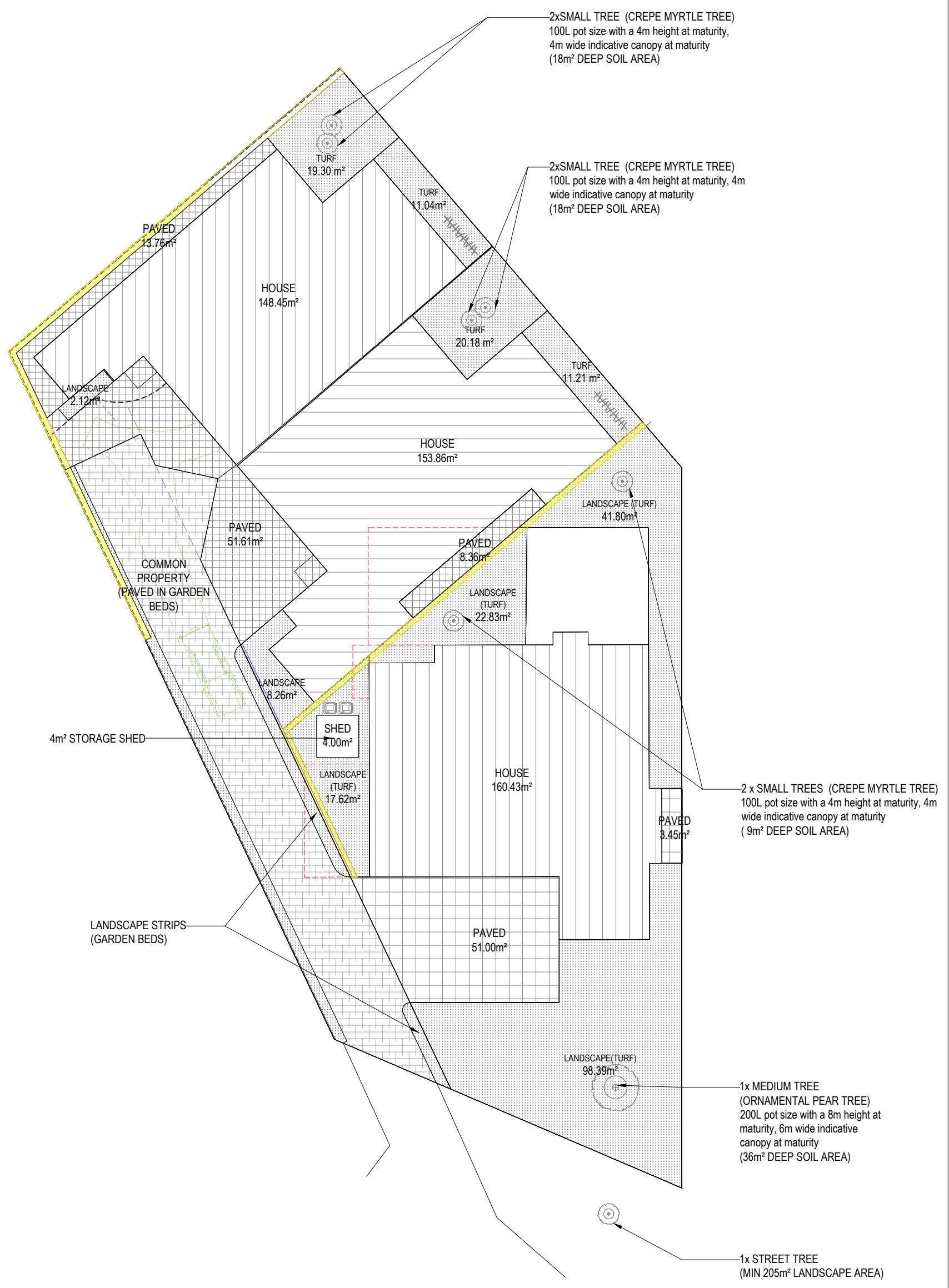


05 UNIT 3 - EASTERN ELEVATION
ANW-201 SCALE 1:100



06 UNIT 2 - WESTERN ELEVATION
ANW-201 SCALE 1:100

GENERAL NOTES	REV. REVISION DESCRIPTION DATE APPD	PROJECT NAME 15 CAPRELLA HEATHRIDGE	DOCUMENTED BY 	DRAWING TITLE UNITS 2 & 3 ELEVATIONS, SECTION
	C ISSUED FOR INFORMATION 22/02/2024 B ISSUED FOR INFORMATION 16/01/2024 A ISSUED FOR INFORMATION 06/12/2023	PROJECT NO. -	58 Claverling Rd, Bayswater WA 6053 M: 0424 367 289 www.anwest.com.au	DWG STATUS ISSUED FOR INFORMATION DWG NO. ANW_201



LANDSCAPING %	
UNIT 1:	98.39+41.80+22.83+17.62 = 180.64 m ²
UNIT 2:	11.21+20.18+8.26 = 39.65 m ²
UNIT 3:	11.04+19.31+2.12 = 32.47 m ²
TOTAL LANDSCAPING	= 252.76 m ²
TOTAL SITE AREA	= 1026 m ²
LANDSCAPING	24.63%

LANDSCAPE PLAN
 SCALE 1:200

GENERAL NOTES	REV.	REVISION DESCRIPTION	DATE	APPD	PROJECT NAME	 58 Clavering Rd, Bayswater WA 6053 M: 0424 367 289 www.anwest.com.au	DRAWING TITLE
					15 CAPRELLA HEATHRIDGE		LANDSCAPE PLAN
	C	ISSUED FOR INFORMATION	22/02/2024		PROJECT NO. -	DWG STATUS	SCALE
	B	ISSUED FOR BUILDING PERMIT	17/01/2024		CO-ORD	ISSUED FOR BUILDING PERMIT	AS SHOWN
	A	ISSUED FOR BUILDING PERMIT	06/12/2023		DRWN AD,AI	DWG NO.	SHEET SIZE
					CHK AJ	ANW_002	A3
							OF
							REV
							02 07 C