

# 2024 Community Art Exhibition

## Terms and Conditions of Entry

<b>Entries open:</b>	Tuesday 5 March, 12noon
<b>Entries close:</b>	Monday 15 April, 12noon (or upon receipt of 200 entries)
<b>Artwork delivery:</b>	Sunday 26 May, 11.00am – 2.00pm to the venue
<b>Exhibition:</b>	Monday 27 May – Saturday 15 June 2024
<b>Venue:</b>	Lakeside Joondalup Shopping City, the Great Space
<b>Collection of artworks:</b>	Sunday 16 June, 11.00am – 2.00pm from the venue
<b>VIP Awards Ceremony:</b>	Saturday 1 June, 6.30pm – 8.30pm, Lakeside Joondalup Shopping City

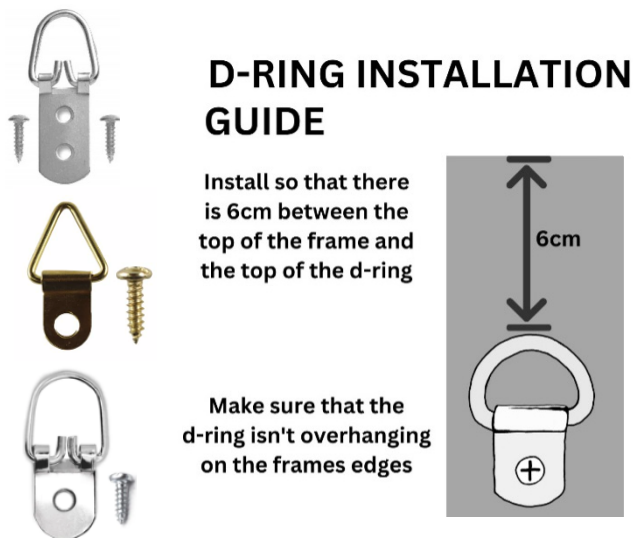
### Entry Criteria

1. The Artist must be a resident of the City of Joondalup (the City) or a current member of an incorporated not-for-profit visual arts association located within the City.
2. To be eligible for entry for the Student Award the Artist must be enrolled in a secondary school located in the City of Joondalup as of **Sunday 26 May 2024**.
3. Student Artists are classified as secondary school students between 12-18 years of age and require parental/guardian permission to enter. Children under 12 years of age are not eligible and parents cannot enter children's artwork on their behalf.
4. Employees of the City of Joondalup are eligible to enter but only to exhibit and must accept that they will not be considered for any of the prizes.
9. Artworks must be culturally appropriate and authentic. Artwork containing cultural references and/or using traditional First Nations and/or cultural techniques must be produced by an artist who has the authority to do so. Artists have responsibilities around representation, specifically in the areas of cultural appropriation and stereotyping and ensuring their artwork follows appropriate cultural procedures. Artists should refer to the Australia Council for the Arts' protocols for [First Nations Culture and Intellectual Property in the Arts](#) or the [National Association for the Visual Arts \(NAVA\)](#) cultural guidelines when working with cultural material. Artworks that are not culturally appropriate, as deemed by the Curator, will not be accepted for inclusion.

### Artworks

5. Artists are invited to submit one (1) Artwork for inclusion in the 2024 Community Art Exhibition (the Exhibition). Artists are only permitted to enter once.
6. A diptych or triptych will be deemed as one (1) Artwork and the total of all pieces must adhere to the size restriction of 100cm (H) x 100cm (W) including framing. Artists must clearly indicate the order of display for diptych and triptych works on the Artwork Delivery Form to assist with the installation of the Artwork.
7. Only the Artist who created the Artwork can enter the Artwork for inclusion in the Exhibition, unless in the case of legal guardians.
8. The Artwork must have been created within a period of 12 months before **Monday 15 April 2024** and must not have been the recipient of another art prize. If an Artwork is identified as having breached this condition it will be removed from the Exhibition.
10. Due to the public location, Artworks must be suitable for viewing by all age groups. If the Curator decides that the Artwork is not accepted for inclusion, the Artist will be contacted to arrange for collection of the Artwork. The Curator's decision on inclusion is final and is not the subject of appeal.
11. The medium and size of the Artwork should be suitable for the temporary exhibition facility and must meet the following entry criteria:
  - Two-dimensional (**2-D**) Artworks must not exceed **100cm (H) x 100cm (W)** (including frame);
  - Three-dimensional (**3-D**) Artworks must not exceed **100cm (H) x 100cm (W) x 100cm (D)** (including base); and
  - Artworks must not exceed **10kg** in weight.Please note: the size restrictions will be strictly followed, and measurements will be made when the Artwork is submitted. Artwork that does not comply with these criteria will not be accepted for inclusion.

12. Artworks must be delivered with dry materials and must be suitable for installation and display for the entire exhibition period. Two-dimensional (2-D) artworks must be fixed with D-rings (see below) to ensure that they are compatible with the hanging system. Framing/hanging wire or string is not an acceptable hanging device. No wall fixings (nails or screws) are available to install the artwork. The Curator will evaluate the Artwork prior to acceptance into the Exhibition and throughout the exhibition period. The City reserves the right to withdraw an Artwork from the Exhibition and will do so where it is determined by the City that the Artwork is too fragile for display. The required hanging devices are **D-rings (pictured)**:



D-rings can be sourced from picture framers and quality hardware stores.

13. If required, arrangements for framing of Artworks and the costs associated with framing is the responsibility of the Artist.
14. Any specific display requirements must be discussed with the Curator prior to submitting the Artwork for inclusion, including power, A/V requirements and exhibition display items. A limited number of plinths and acrylic cases are available for three-dimensional (3-D) works and must be requested in advance at the time of completing the Entry Form.
15. No changes may be made to an Artwork after it has been accepted for inclusion in the Exhibition.
16. After the completed Entry Form and payment has been received by the City, Artwork Delivery Forms will be sent to each Artist via email confirmation. The Artwork must have this form attached when delivered.
17. Artworks cannot be removed by any person from the Exhibition until **Sunday 16 June 2024, 11.00am – 2.00pm**. Only City of Joondalup staff may remove Artwork from the Exhibition at its discretion.
18. The City's Curator will evaluate the Artwork for inclusion in the Exhibition in accordance with these Terms and Conditions. If the Curator deems that the Artwork does not meet the Terms and Conditions the Artwork will not be accepted for inclusion, and the Artist will be contacted to arrange for collection of the Artwork. **The Curator's decision on inclusion is final and is not the subject of appeal.**

## Entries and Fees

19. In order to manage the capacity of the available exhibition space, the City reserves the right to limit the number of entries to two hundred (200) Artworks.
20. Information regarding the Artwork details (Artist's name, title of the work, medium, size, and Artwork price) and the nominated Award Categories on the Entry Form is final once submitted and changes cannot be made.
21. A Standard Entry fee of **\$30.00** (including GST) will apply to each Entry excluding Clause 22 and 23.
22. A Student Entry fee of **\$10.00** (including GST) will apply to Entries submitted to the Student Award. Artists submitting an entry to these awards must be enrolled in a secondary school on **Sunday 26 May 2024**, and students younger than 12 years are not eligible to enter as per Clause 2 and 3.
23. A Concession Entry fee of **\$10.00** (including GST) will apply to Entries submitted by people living with disability, healthcare and concession card holders, and pensioner concession card holders.
24. Payments are not refundable if the Artist does not deliver the Artwork to Lakeside Joondalup Shopping City on **Sunday 26 May 2024, 11.00am – 2.00pm**.
25. Entries to the Exhibition can be made only via the online Entry Form (credit card payments only).
26. All online Entries must be received with payment by the City on or before **12noon, Monday 15 April 2024**.
27. Hardcopy Entry Forms are not accepted. Online entry assistance is available from the City's Cultural Service Team by emailing [visualarts@joondalup.wa.gov.au](mailto:visualarts@joondalup.wa.gov.au) or calling **9400 4000**.
28. Paying an entry fee does not guarantee acceptance into the exhibition. If an artwork is deemed unacceptable according to the City's Terms and Conditions, no refund will be issued.

## Categories, Judging and Winning Work

29. All Artworks will be judged on artistic merit by a panel of independent arts industry professionals selected by the City, except for the Popular Choice Award, which is voted by the public.
30. The City reserves the right to disqualify any Popular Choice vote it deems not genuine.
31. All Artworks in the Exhibition will be considered for the Most Outstanding Artwork Award, Highly Commended Award, and the Popular Choice Award.
32. Any employee of the City that enters will not be eligible for any awards.
33. Judging will take place at the Venue. The winner of each Award will be announced at the official VIP Awards Ceremony on **Saturday 1 June 2024**. Artists will be invited to attend the event (invitations will be sent prior to that date).
34. All decisions of the judging panel in relation to any aspect of the competition will be final and binding upon each Artist who enters the competition.
35. Award categories are as follows:  
**Awards – (all entries are eligible)**  
 Most Outstanding Artwork - \$4,000  
 Highly Commended Award - \$1,500

### Additional Awards (optional)

The Celebrating Joondalup Award - \$1,500, and Student Award - \$750, are voluntary awards and must be selected in the Entry Form to be considered.

### Celebrating Joondalup Award – \$1,500

Artworks nominated for this Award will be judged based on how it relates to or represents the City of Joondalup. Artists nominating for this category must provide a statement of maximum 300 words on the Entry Form. This award is restricted to artists who are residents and/or ratepayers of the City of Joondalup.

### Student Award – \$750

The Student Award is only open to students between the age of 12 – 18 years. Students must be enrolled in a secondary school located in the City of Joondalup as of Sunday 26 May 2024. Children under 12 years of age are not eligible and parents cannot enter children's artwork on their behalf.

### Popular Choice Award – \$500

The Artwork that receives the most public votes during the Exhibition will be awarded the Popular Choice Award. Voting commences on **Monday 27 May 2024** and concludes at **5.00pm, Saturday 15 June 2024**.

## Artwork Sales

36. All Artworks must be available for sale and Artists must set their own prices at time of entry.
37. A sales commission fee of 20%, paid to the City, will apply on all sales and must be included in the sale price.
38. Artwork is not to be priced for an amount greater than \$2,000.00, including any GST (if registered).
39. The City acts as an agent (agency sale) on the artist's behalf and does not take ownership of the Artwork. The City will not issue invoices for sale of artwork.
40. The City makes no guarantee with respect to the sale of Artwork.
41. The sale price cannot be changed once the Entry Form is submitted and remains fixed for the duration of the Exhibition.
42. The City will contact all Artists if their Artwork has been sold. In this case, sold artwork collection arrangements will be made directly between the City and the purchaser and the Artist will not need to collect the Artwork from the Venue on **Sunday 16 June 2024**.
43. Upon sale of an Artwork, if an artist does not have an Australian Business Number (ABN), they will be required to submit a Statement of Supplier Form.
44. In order to receive payment, Artists are required to complete a New Supplier Form (if not already a supplier of the City).
45. The Artist must supply a valid tax invoice to the City to receive payment for their sold Artwork with the cost deducting the City's 20% commission fee.

## Copyright, Insurance and Legalities

46. The Artist is responsible for satisfying any copyright requirements concerning their Artwork.
47. The Artist warrants that, to the best of their knowledge, there is no cultural, religious, legal or other reason that prevents the Artwork from being exhibited, published or reproduced and that the Artwork is their own original work.
48. By entering their Artwork for inclusion in the Exhibition, the Artist agrees to allow the City to:
  - Document (including photography and videography), reproduce, publish and display the Artwork, in full or in part, for use in any non-commercial promotional materials and publications of the City, including promotions of the Community Art Exhibition.
  - Attribute the Artist's name and Artwork details provided by the Artist in connection with their Entry, where their Artwork is published; and
  - Provide the media or relevant external sources with photos and information about the Artwork and Artist for the purpose of promoting or reporting on the Exhibition or Award recipients. Please note the City does not have attribution control for external sources.
49. Insurance of Artworks while in transit is the Artist's responsibility. Once delivered to the City, the Artwork will be covered for loss or damage for the duration of the Exhibition – up to the time of collection on **Sunday 16 June 2024** – and includes replacement materials and workmanship to the value nominated by the Artist on the Entry Form to the maximum value of \$2,000.00.
50. In the event that the State Government publishes emergency measures, including restricting public gatherings, the City can vary Terms and Conditions as required and at short notice and will notify Entrants of any changes by email where necessary.

## Deliveries and Collections

51. All Artworks must be delivered to the exhibition space at **Lakeside Joondalup Shopping City on Sunday 26 May 2024, 11.00am – 2.00pm**. Artworks not received within these times will be excluded from the Exhibition. The City will comply with current COVID restrictions as advised by the WA Health Department including staggering delivery times if required.
52. An Artwork Delivery Form must be attached to the Artwork or completed upon delivery – otherwise the Artwork cannot be accepted.
53. Any Artworks not delivered to Lakeside Joondalup Shopping City on **Sunday 26 May 2024, 11.00am – 2.00pm** will be excluded from the Exhibition and refunds for entry fees will not be granted.
54. All **unsold Artworks** must be collected by the Artist on **Sunday 16 June 2024, 11.00am – 2.00pm** from Lakeside Joondalup Shopping City. Artworks cannot be collected any earlier or any later.
55. Artists are responsible for the transport and packing of their Artworks for delivery, including all associated costs, plus the transport of their unsold Artwork from the Exhibition.

56. Artists must accept that the City is unable to store artworks after the collection period and close of the exhibition. If artists are unable to collect artworks they must arrange for a suitable person to collect on their behalf and notify the City in advance, approving the alternate collection person in writing.
57. Any Artwork not collected within the specified timeframe shall be dealt with at the discretion of the City. Uncollected Artworks will become the property of the City and may be disposed of at its discretion.

### **Subject to change**

58. Please note these terms and conditions are subject to change, including but not limited to such details as associated dates of the event. While every effort is made to adhere to these Terms and Conditions, in unavoidable circumstances the City will communicate such variations and change, as sent to Artists, when and where such details become known.